



1



2



3



4



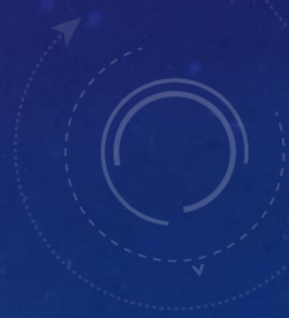
5



6

П.А.Ойуунускай мэтириэтин бул.

5



А5абар сурук

1

Байанай
алгыһа

2

А5а алгыһа

3

Ойуунускай хоһоонун бул

А5ам оло5о

4

А5а
колуонэ5э

5

Кэс тыл

6

3



Таатта о5ото
Тааттык
Бэргэн

1

Талах курдаах
Таатта уола

2

**П.А.Ойуунускай ылына сылдыбыт
псевдонима**

Хоочугур уола
Былатыан

3

Уус тыллаах
Саха уола

4

2

The background features a vertical blue gradient from dark purple at the top to a medium blue at the bottom. It is filled with a field of small, light blue stars. Several technical diagrams are overlaid: a large circular scale with degree markings (0, 90, 100, 110, 120, 130, 140, 150, 160, 170, 180, 190, 200, 210) and arrows is in the top right; a smaller circular diagram with arrows is in the bottom right; and partial circular diagrams with arrows are visible in the top left and bottom left corners.

Халдьяайы

1

Толугур

2

**Ханнык куолгэ о5о куйуурдуу
турбутай?**

Халамнаайы

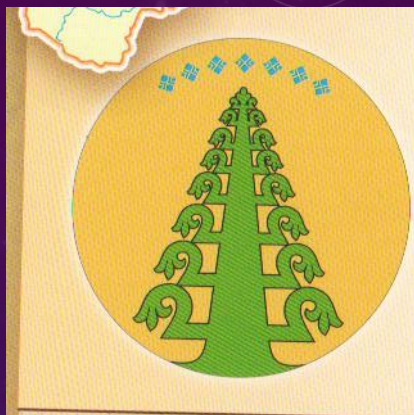
3

Кубээйи

4

3

The background features a vertical blue gradient from dark at the top to light at the bottom. It is overlaid with a field of small, light blue stars. Several technical-style circular graphics are scattered across the page: a large circular scale with degree markings (0, 90, 100, 110, 120, 130, 140, 150, 160, 170, 180, 190, 200, 210) and a central arrow in the top right; a smaller circular scale with a central arrow in the bottom right; and two partial circular scales with arrows in the top left and bottom left corners.



1



2

Таатта улуһун гербэтин бул.



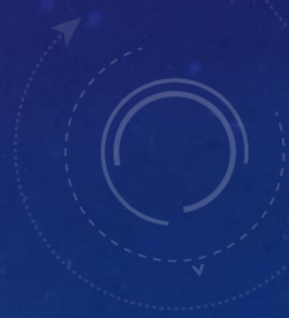
В
т
ст
св
ка
ст
О
На
ся
со
Ка
ст
Ка
За
С
пр
А
ад

3



4

1





Мөнүрүүр Бөбө

1



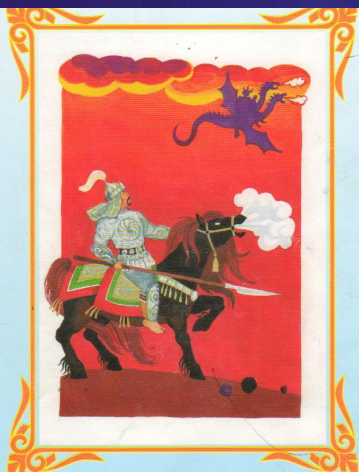
**Дырыбына Дырылыатта
Кыыс бухатыр**

2

П. Юуунускай суруйбут олонхото ханныгый?

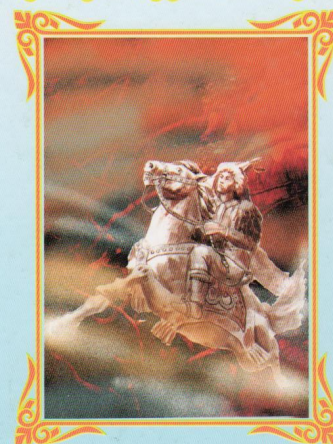
4

3



**Дьулуруйар
Ньургун Боотур**

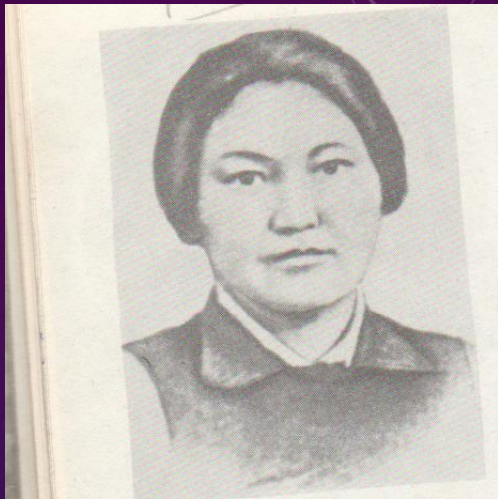
4



Тойон Дьабарыма

3

The background is a dark blue gradient with a field of small white stars. In the top right corner, there is a large circular graphic resembling a dial or gauge with numerical markings from 0 to 210. In the bottom right, there is a smaller circular graphic with dashed lines and arrows. In the bottom left, there is another circular graphic with solid lines and arrows. A faint dotted line runs diagonally across the page.

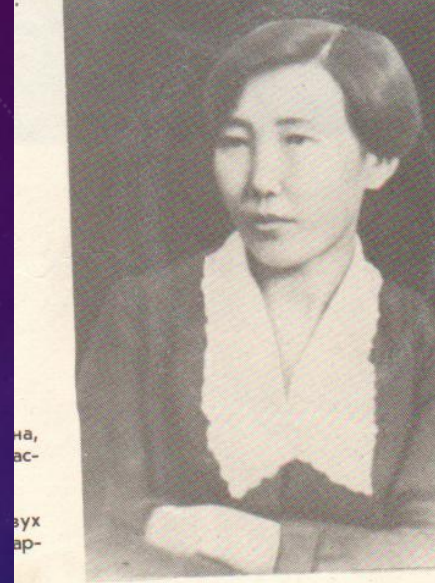


1

П.А.Ойуунускай
кэргэнин Акулина
Николаевна
Борисованы
булун.



2

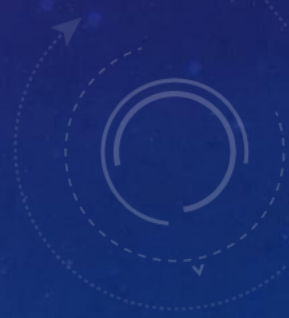


3



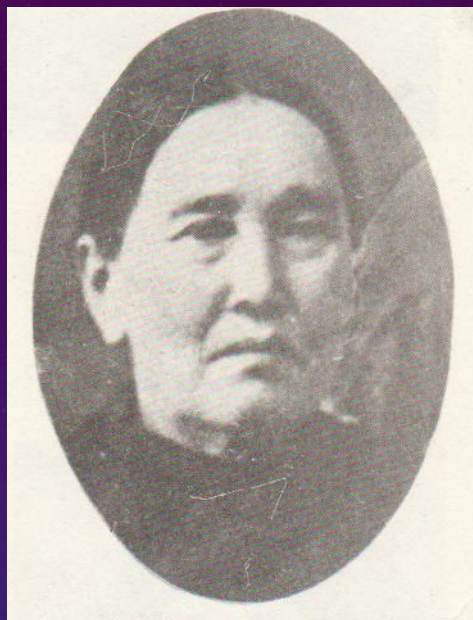
4

1





1



2



3

Былатыан ийэтин
булун.

1



1892-1938сс.

1

1893-1939 сс.

2

П.А.Ойуунускай олорбут сыла?

1890-1936 сс.

3

1896-1969 сс.

4

2

The background features a blue gradient from dark purple at the top to a lighter blue at the bottom. It is filled with a field of small, light blue stars. Several technical diagrams are overlaid: a large circular scale with degree markings (0, 90, 100, 110, 120, 130, 140, 150, 160, 170, 180, 190, 200, 210) and arrows is in the top right; a smaller circular diagram with arrows is in the bottom right; and a partial circular diagram with an arrow is in the bottom left. A faint dotted line runs diagonally across the scene.

2008с
Ойуунускай 115
саадын туолуутугар
1

2003с
Ойуунускай 110 саадын
туолуутугар
2

ЮНЕСКО биллэриитинэн Ойуунускай сыла хаһан буолан ааспыттай?

2013с
Ойуунускай 120
саадыгар
3

1993с
Ойуунускай 100 саадын
туолуутугар
4

4

The background features a blue gradient with a field of small white stars. In the top right corner, there is a large technical diagram consisting of concentric circles and a scale with numerical markings from 0 to 210. In the bottom right corner, there is a smaller diagram with dashed lines and arrows. In the bottom left corner, there is another diagram with solid lines and arrows. A faint circular diagram is also visible in the top left corner.

1917с
Дьокуускай
1

1919с
Казанка диэн
куоратка
2

**Чугас доБоро Максим Аммосовка анаан
суруйбут «Сим-биир буолбаат?!» хоьоонун
хас сыллааха суруйбутай?**

1922с
Таатта
3

1920с
Москва
3

2

The background features a blue gradient from dark purple at the top to a lighter blue at the bottom. It is decorated with a field of small white stars and several technical diagrams. In the top right, there is a large circular gauge with a scale from 0 to 210 and a white arrow pointing to approximately 180. Below it is a smaller circular diagram with concentric circles and arrows. In the bottom left, there is another circular diagram with a dashed outer ring and a solid inner ring, with an arrow pointing left. A faint dotted line runs diagonally across the right side of the page.

1956с
Сэтинньи 11 кунэ
1

1953с
Алтынньы 15 кунэ
2

**П.А.Ойуунускай утуо аата
хас сыллааха чолунэр
туьэриллибитэй?**

1955с
Ахсынньы 15 кунэ
3

1954с
Ахсынньы 25 кунэ
4

3

The background is a dark blue gradient with a field of small white stars. In the top right corner, there is a large circular graphic with concentric rings and a scale from 0 to 210 degrees. In the bottom right, there is a smaller circular graphic with dashed lines and arrows. In the bottom left, there is another circular graphic with solid lines and arrows. A faint dotted line runs diagonally across the page.