

Describing Harry Potter's Characters

Look at the characters and transform the sentences using compound adjectives to describe them.

Madam Hooch has **grey hair**.

⇒ She is *a grey-haired woman.*

⇒ She is *grey-haired.*



Alastor Moody has **one eye**.

⇒ He is *a one-eyed man.*

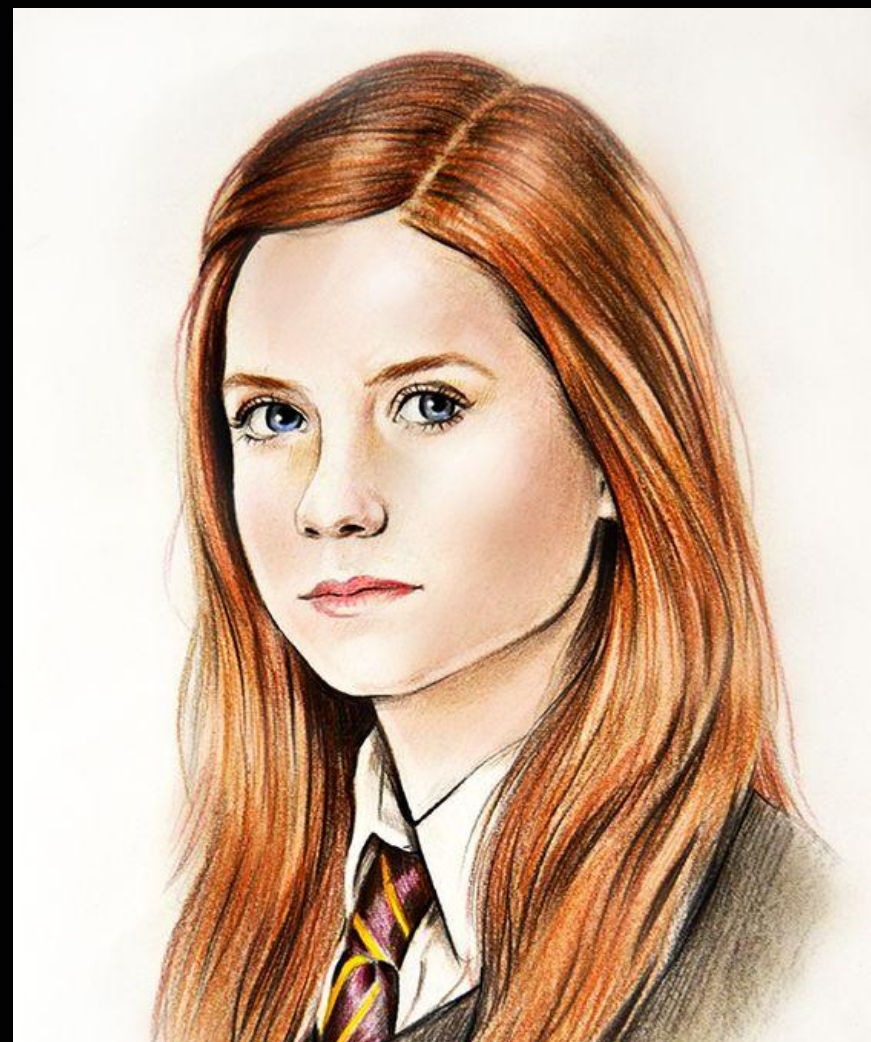
⇒ He is *one-eyed.*



Ginny Weasley has red hair.

⇒ She is *a red-haired girl.*

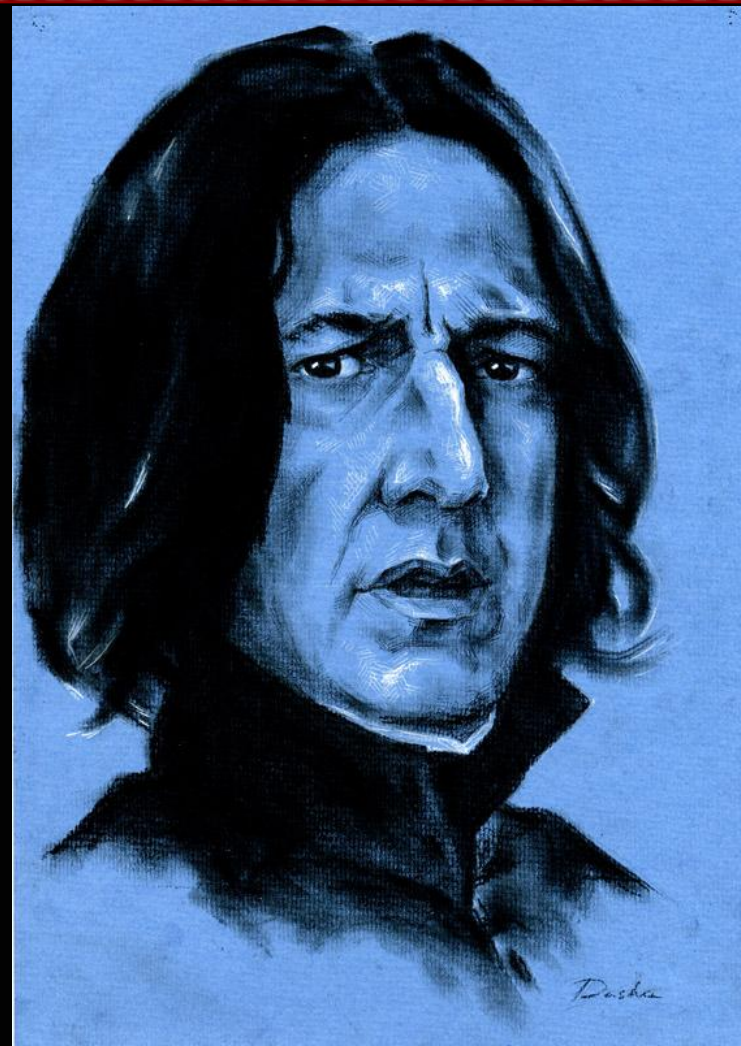
⇒ She is *red-haired.*



Severus Snape has a hooked nose.

⇒ He is *a hook-nosed man.*

⇒ He is *hook-nosed.*



Dumbledore has a **white beard**.

⇒ He is *a white-bearded man.*

⇒ He is *white-bearded.*



Ron Weasley has red freckles.

⇒ He is *a red-freckled boy.*

⇒ He is *red-freckled.*



Draco Malfoy has **weak will**.

⇒ He is *a weak-willed boy.*

⇒ He is *weak-willed.*



Harry Potter has a **hot temper**.

⇒ He is *a hot-tempered boy.*

⇒ He is *hot-tempered.*



Hermione has **wavy** hair.

⇒ She is *a wavy-haired girl.*

⇒ She is *wavy-haired.*



Luna Lovegood has long hair.

- ⇒ She is *a long-haired girl.*
- ⇒ She is *long-haired.*



Cho Chang has **slanting eyes**.

- ⇒ She is *a slanting-eyed girl.*
- ⇒ She is *slanting-eyed.*



Minerva McGonagall has a kind heart.



⇒ She is a kind-hearted woman.

⇒ She is kind-hearted.



Sybill Trelawney does not realize what one is doing, what is happening.



⇒ She is an absent-minded woman.

⇒ She is absent-minded.

