

# ORGANOGENESIS II

BY

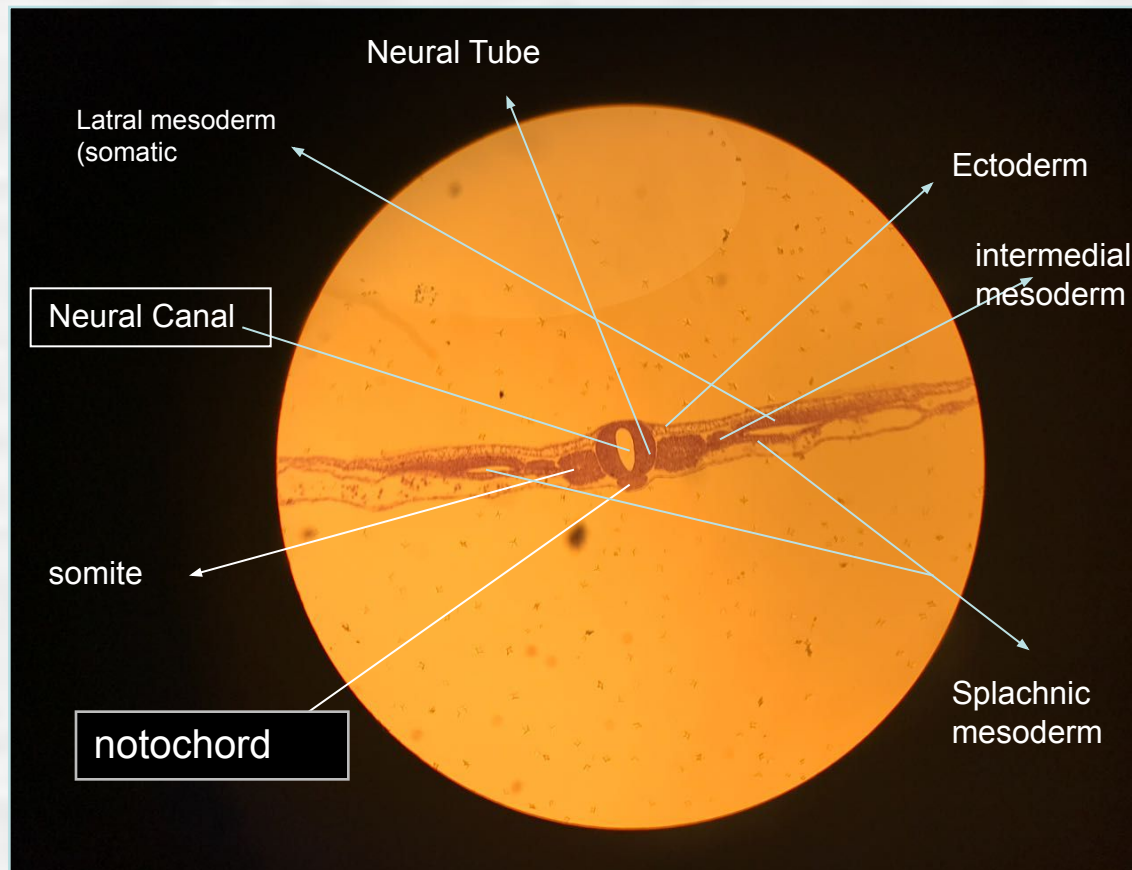
Dr. Salah Mahi &

Okenchi Amobi

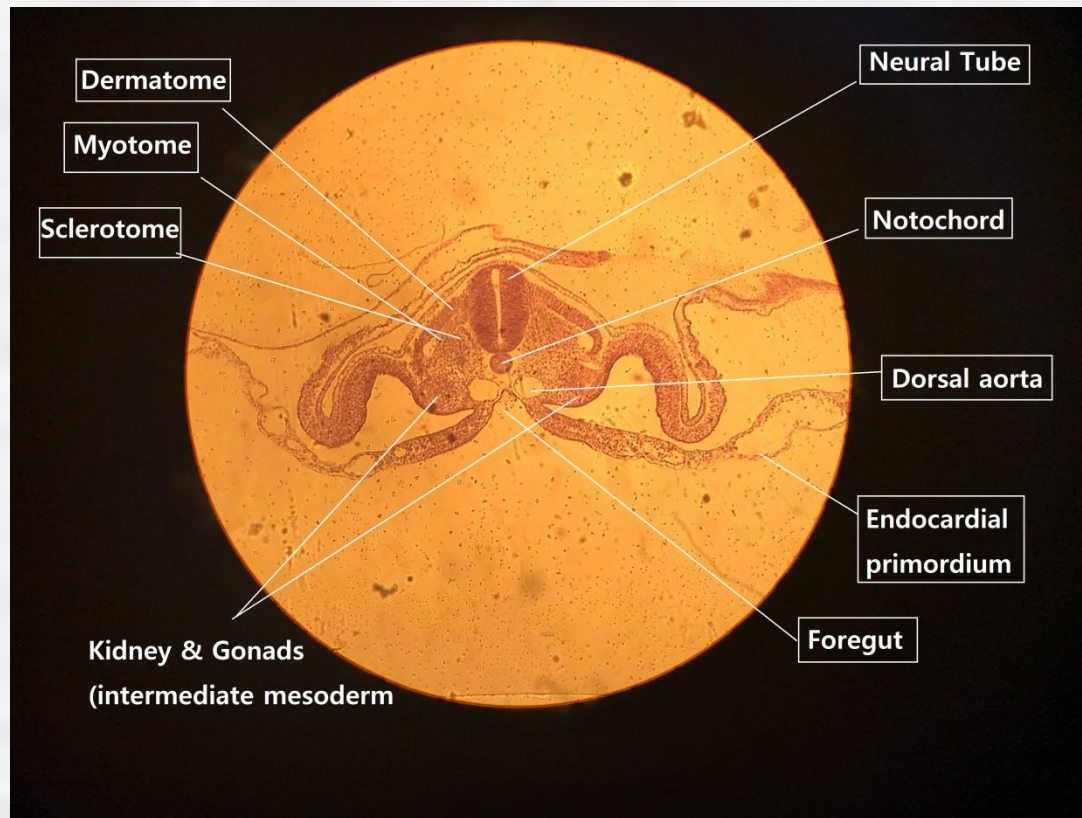
Group 2



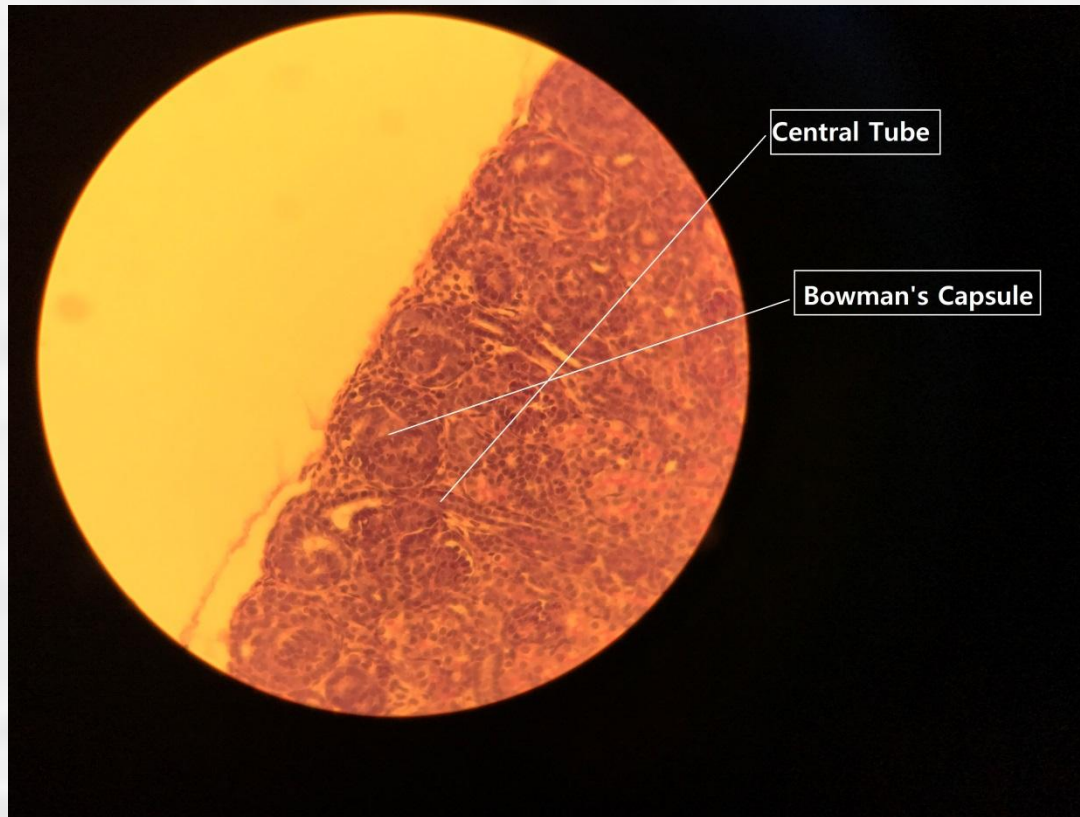
# Neural Tube, Notochord I (x100)



# Neural Tube, Notochord II (x100)



# Kidney (x100)

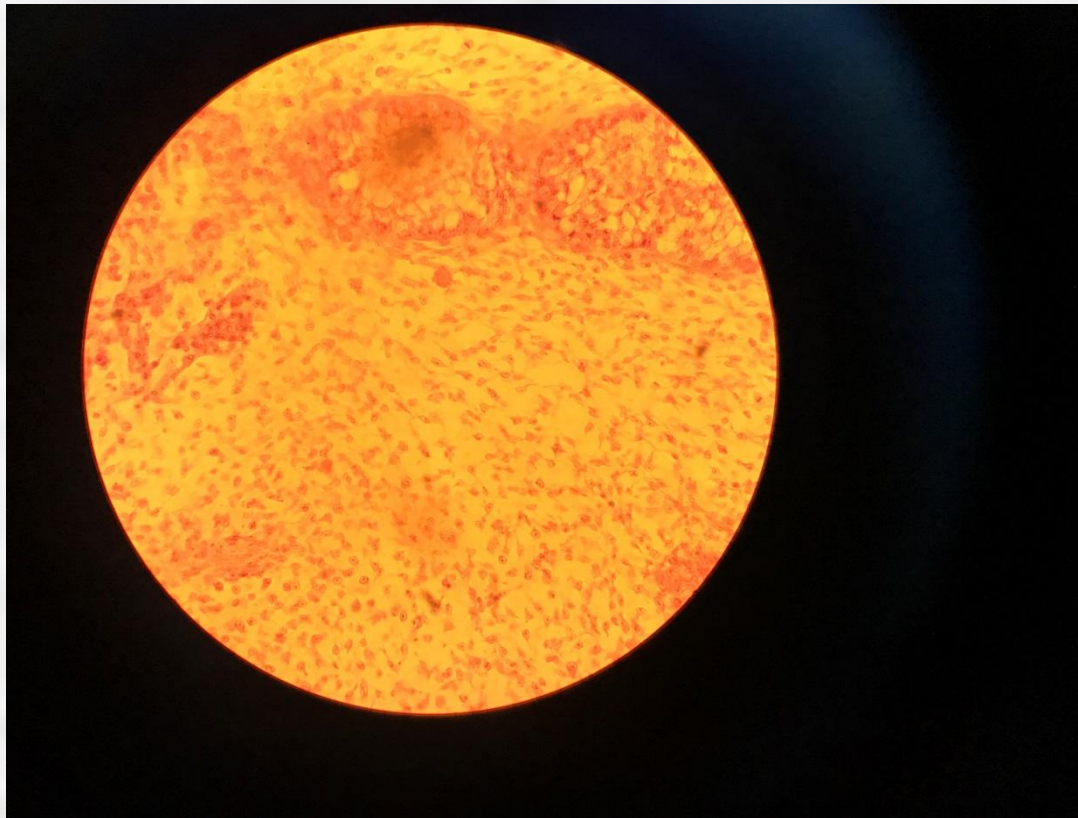


Central Tube

Bowman's Capsule



# Mesenchin cells (x400)



# Neuralation of embryo (x50)

