

Ромбовидный мозг Продолговатый мозг, Мост,

Рисунки Зимина М.А.

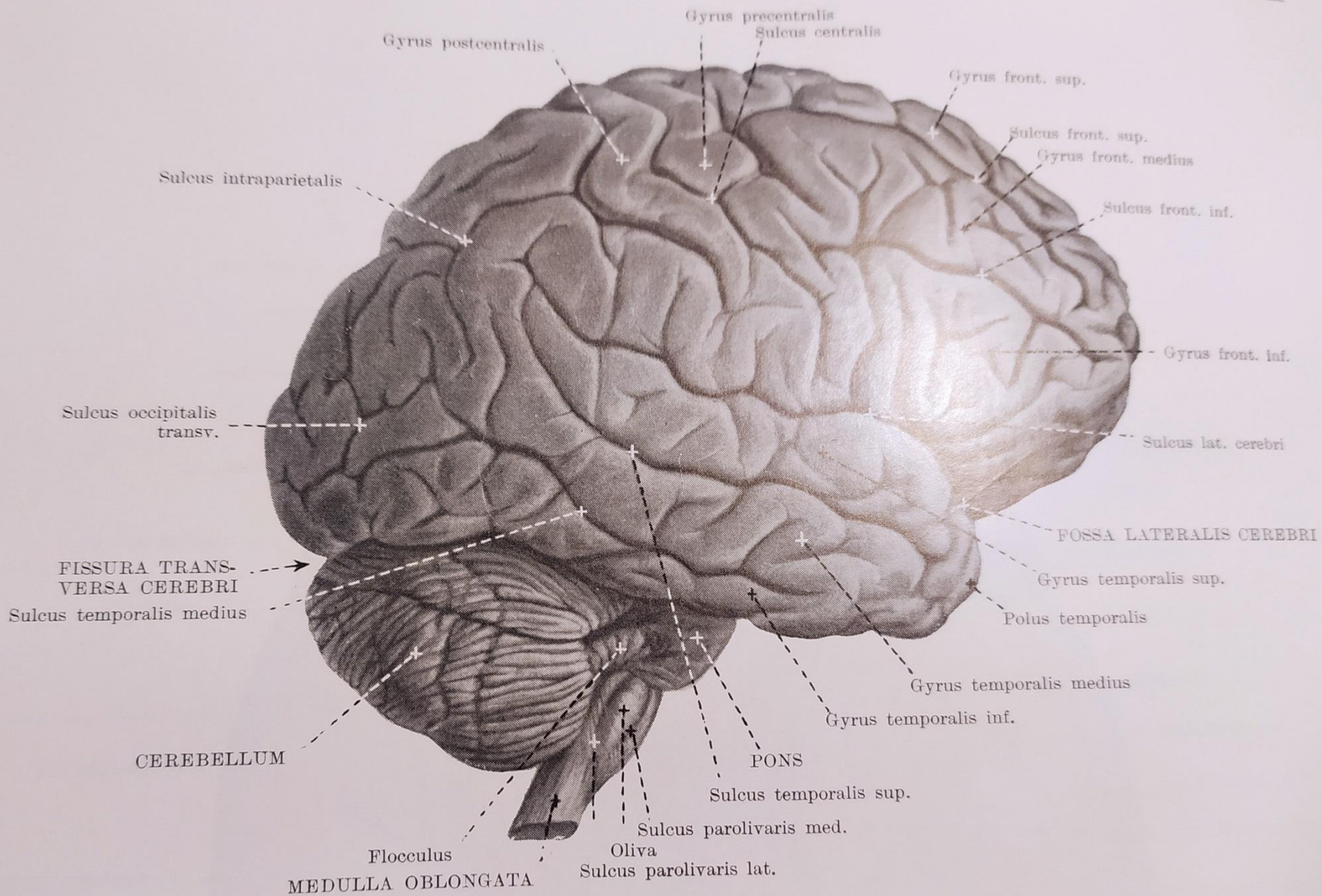


Fig. 2. ENCEPHALON I.
(aspectus lateralis dext.)

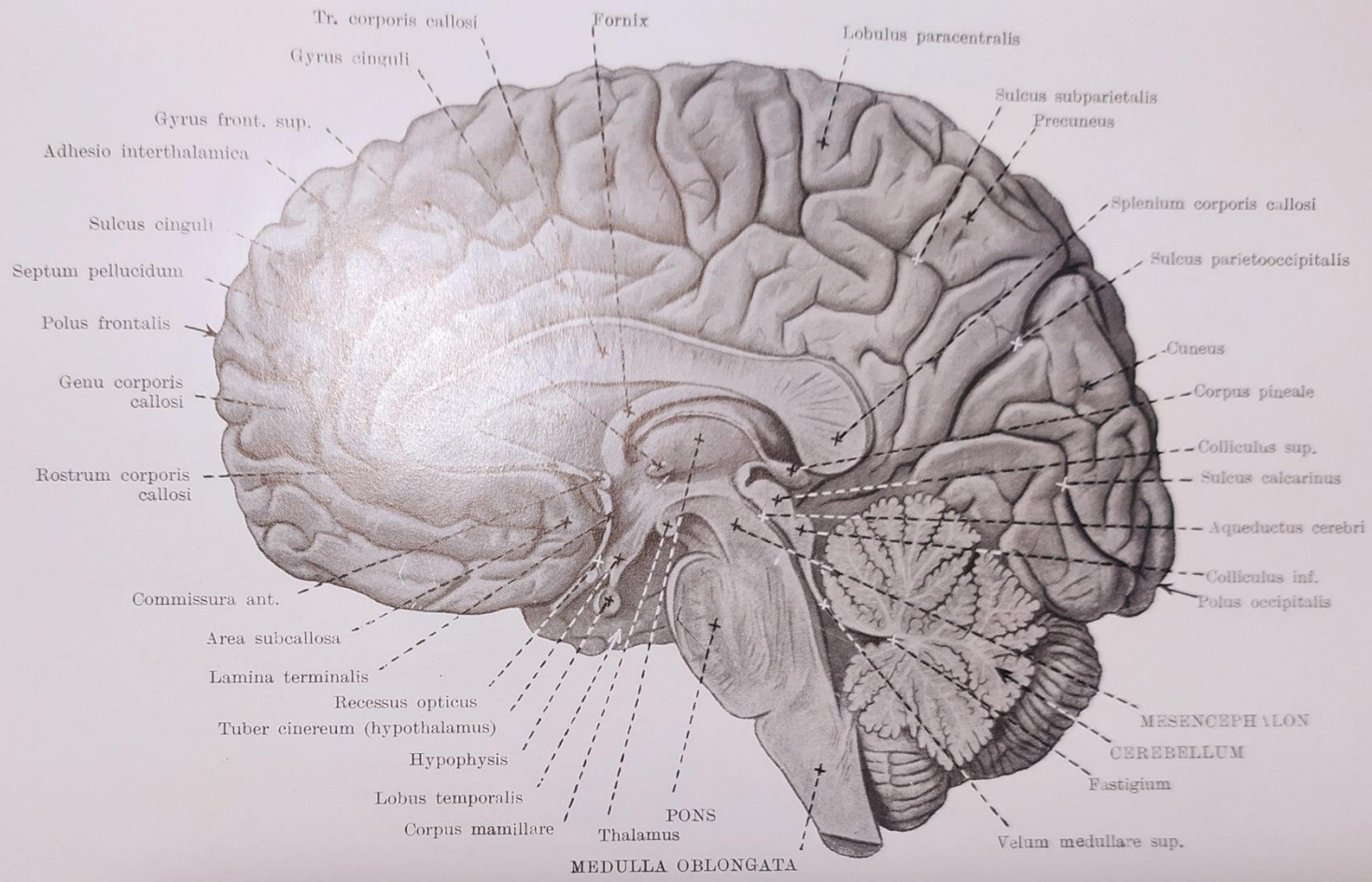
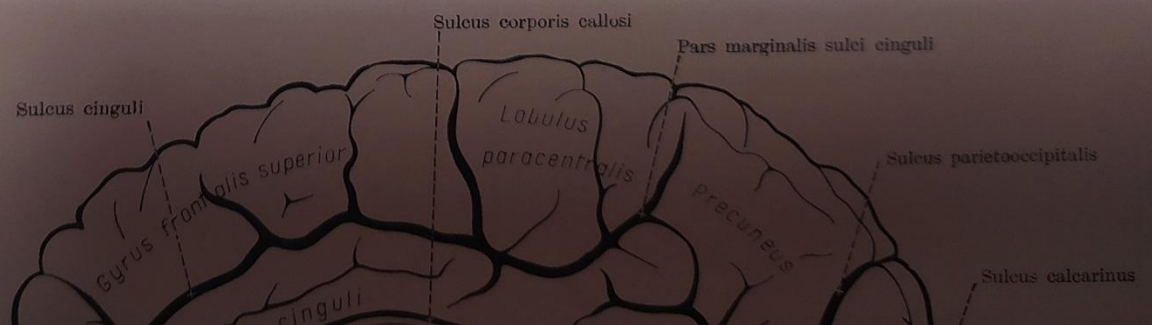


Fig. 4. ENCEPHALON II.
(sectio sagittalis, aspectus medialis, 1. dext.)



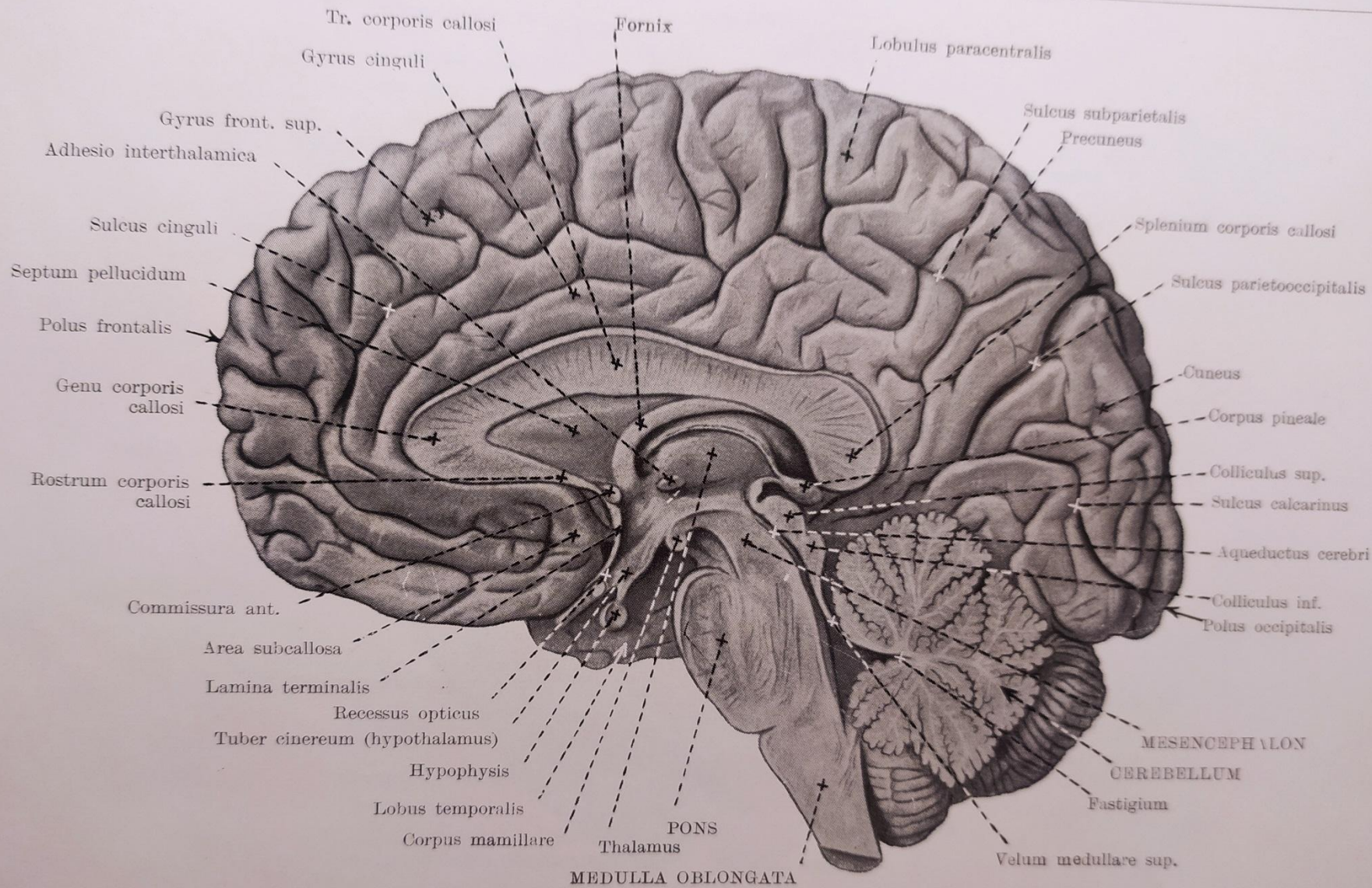


Fig. 4. ENCEPHALON II.
(sectio sagittalis, aspectus medialis, l. dext.)

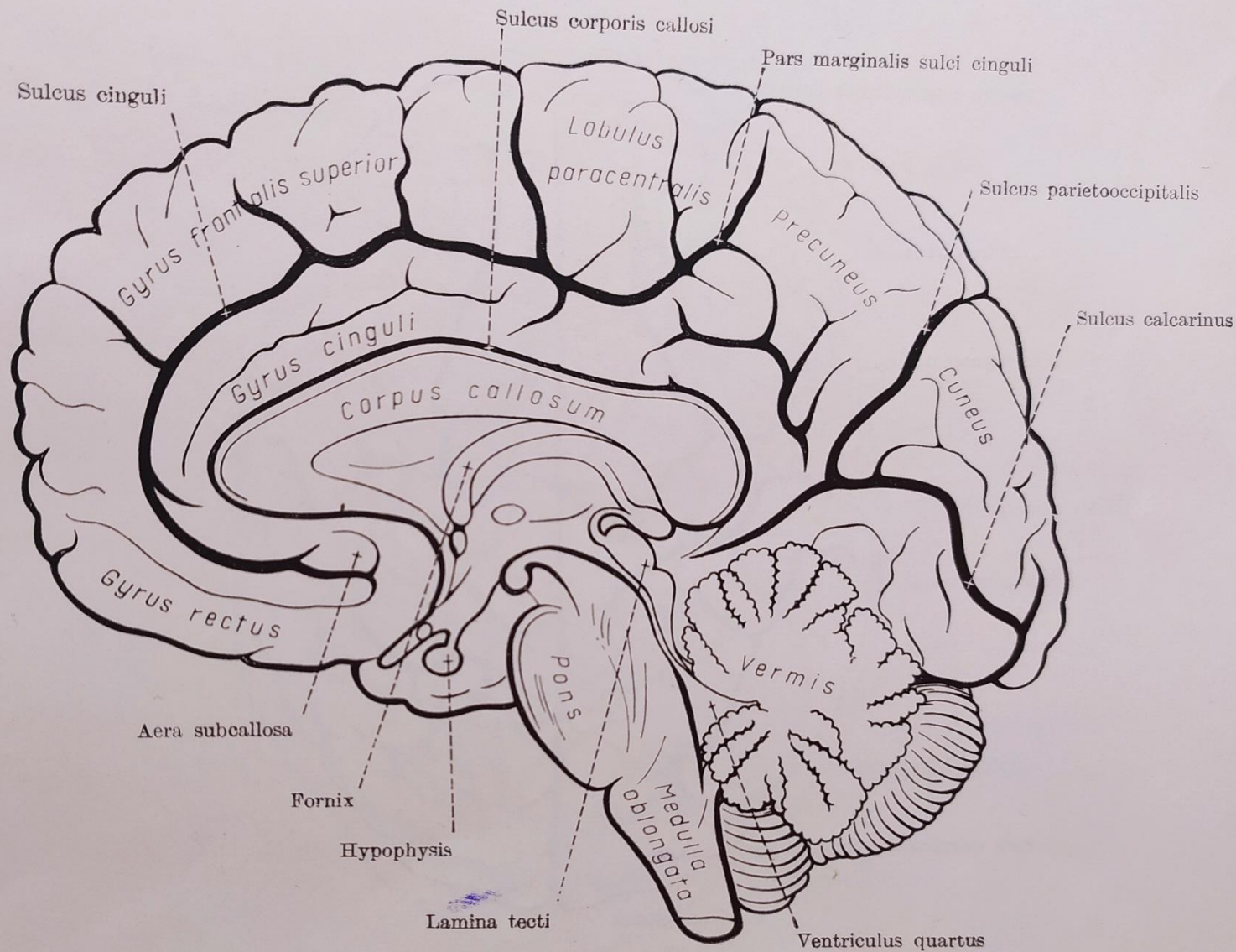
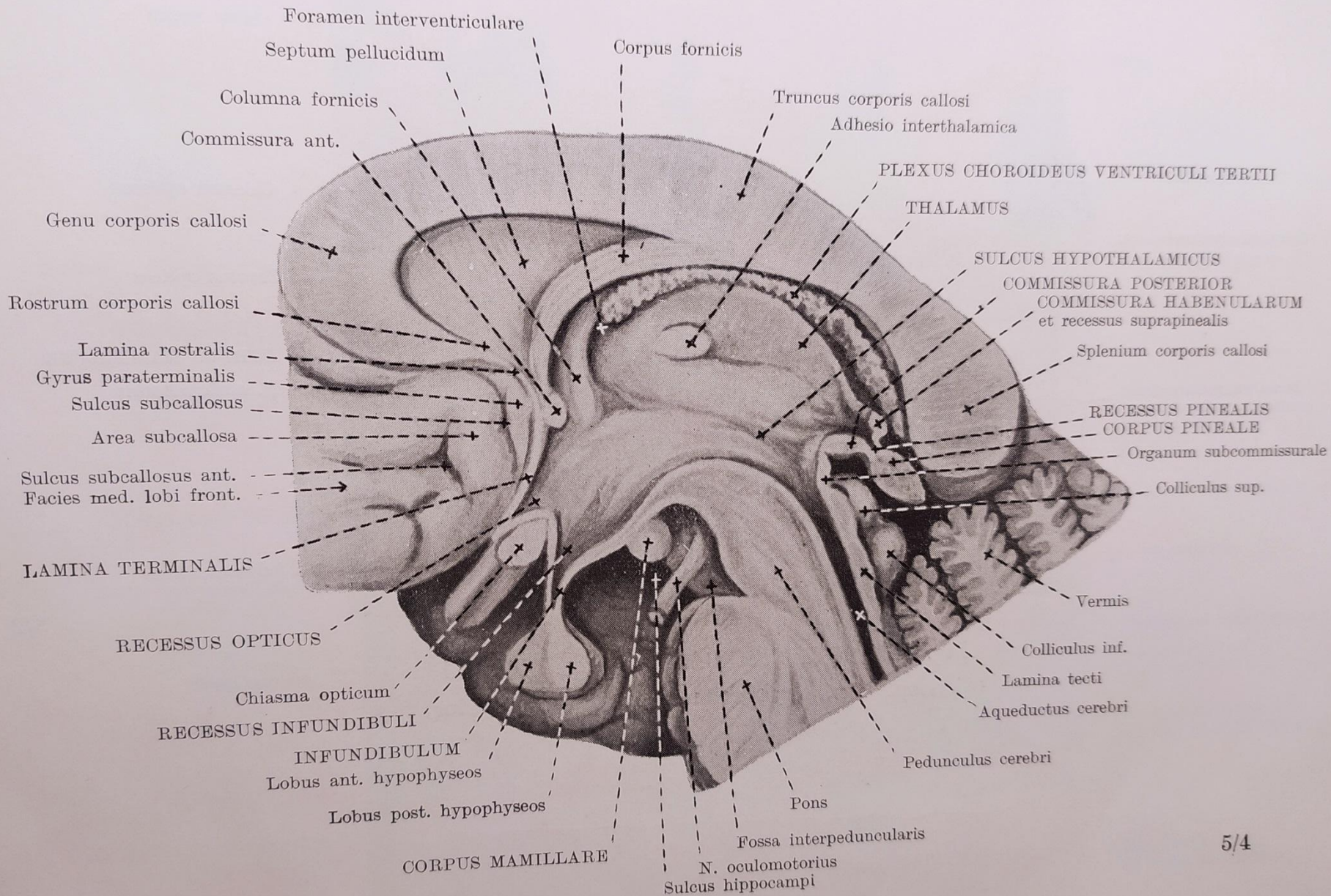
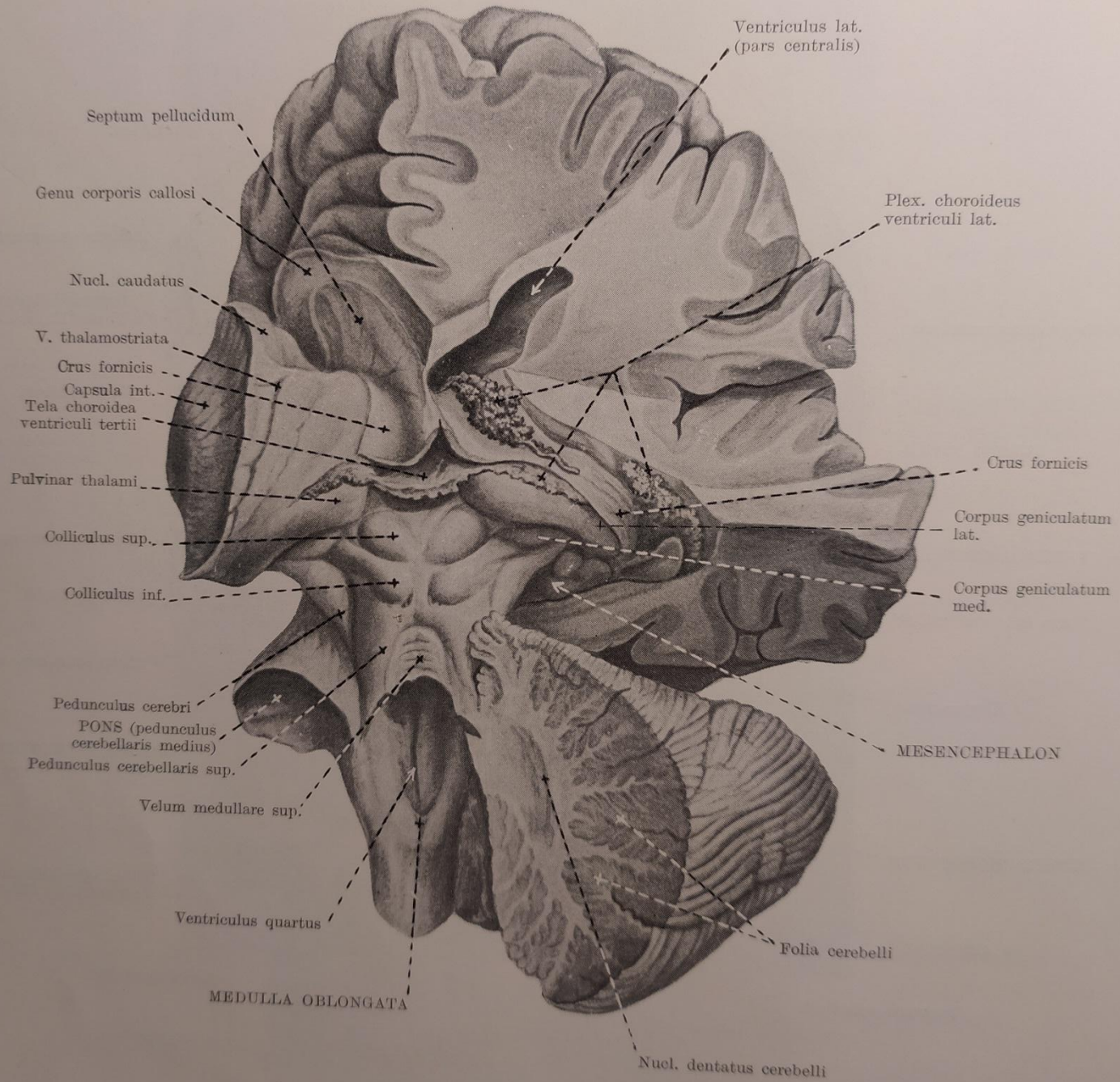
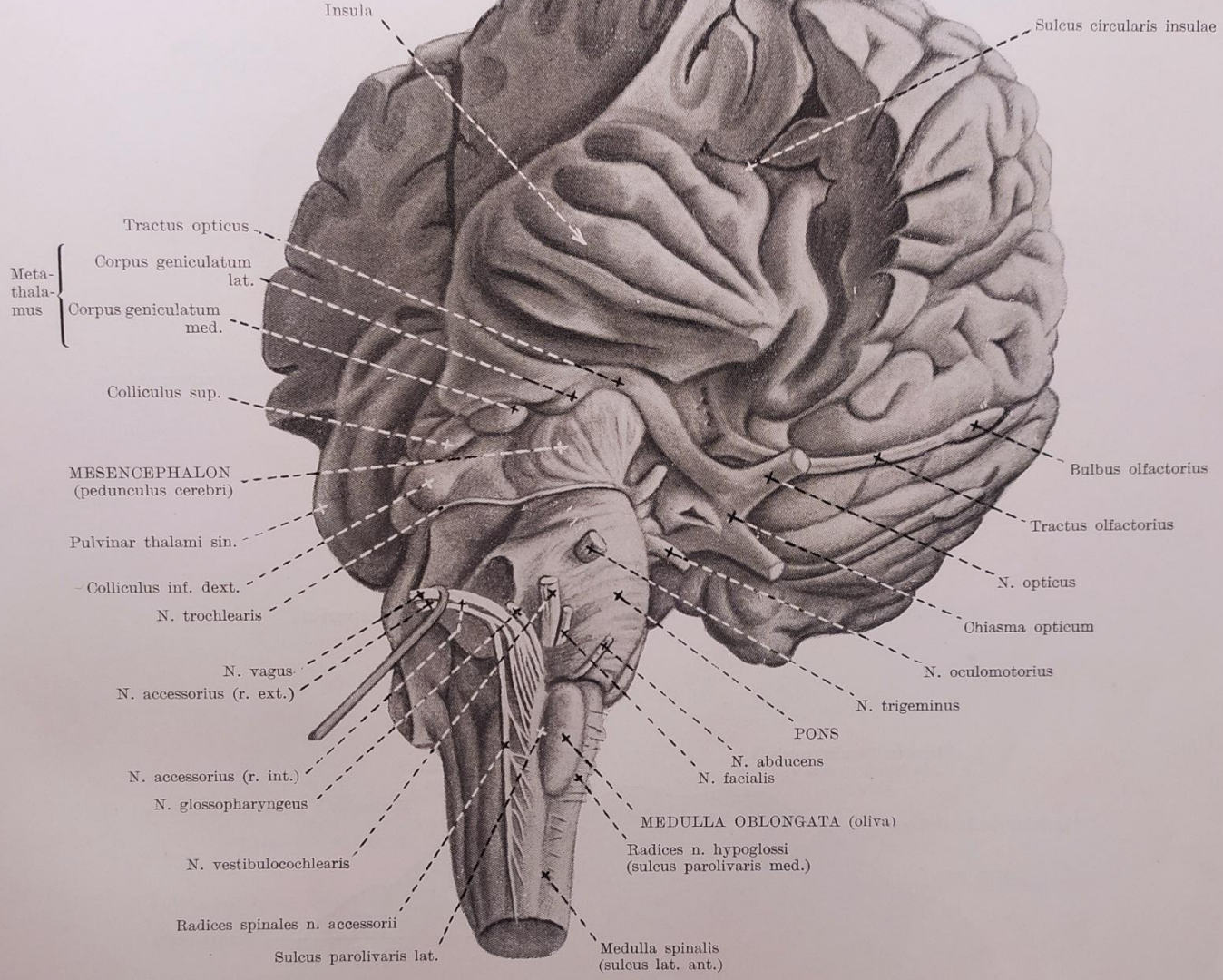


Fig. 5. SULCI ET GYRI CEREBRI II.
 (facies medialis hemispherii, sectio sagittalis encephali)







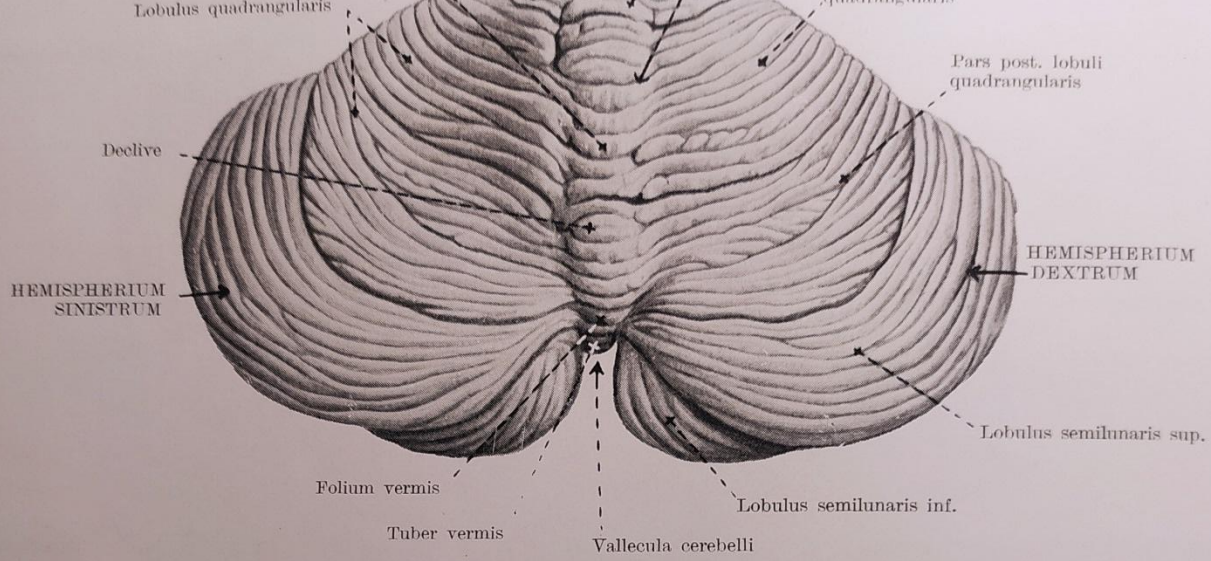
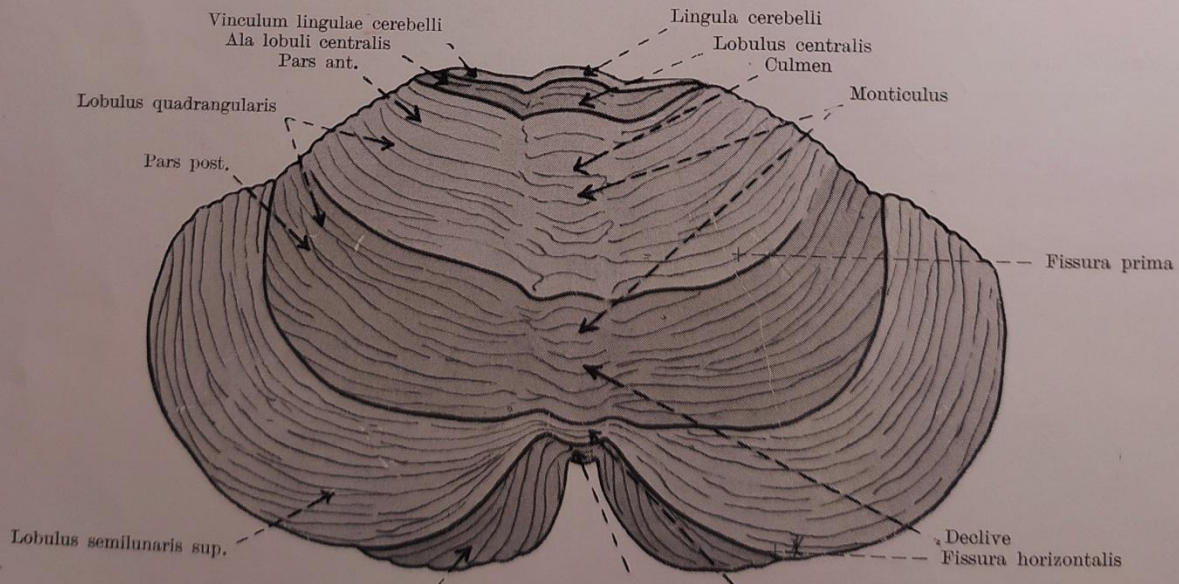


Fig. 27. CEREBELLUM I.
 (vermis et facies superiores hemispheriorum, aspectus superior)



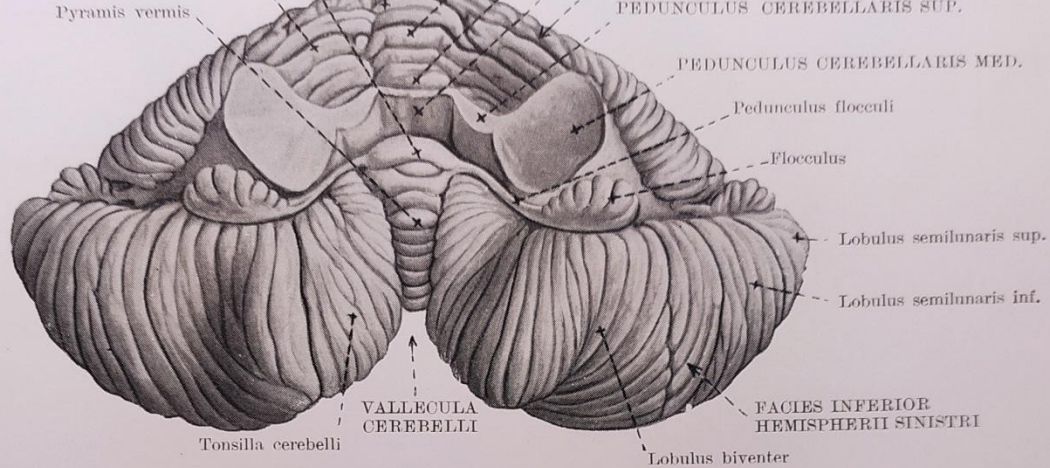
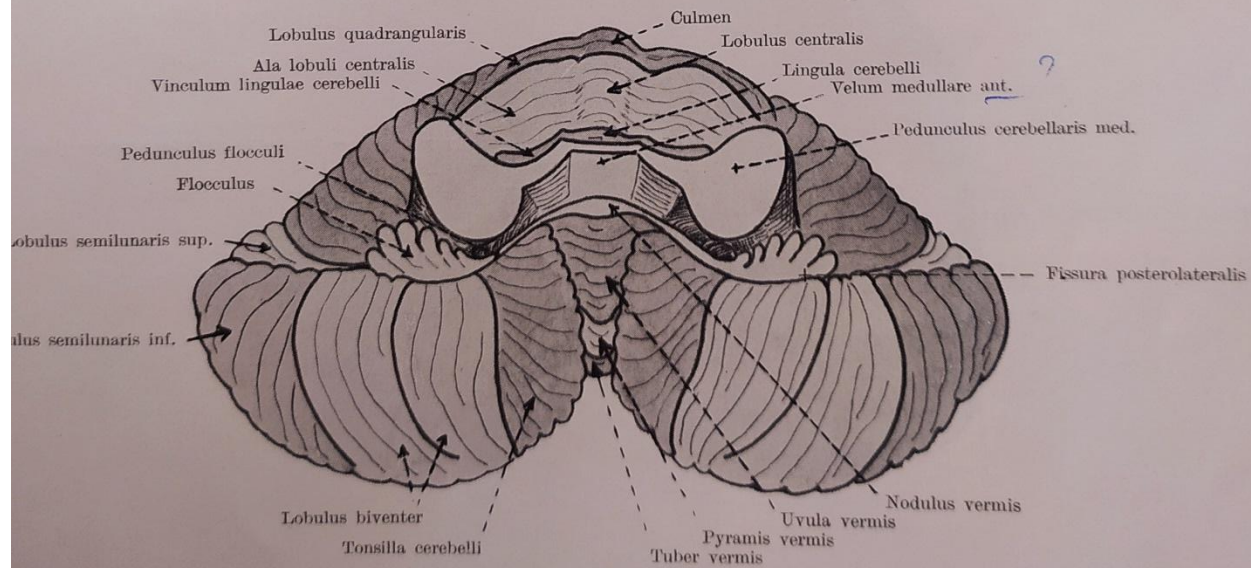
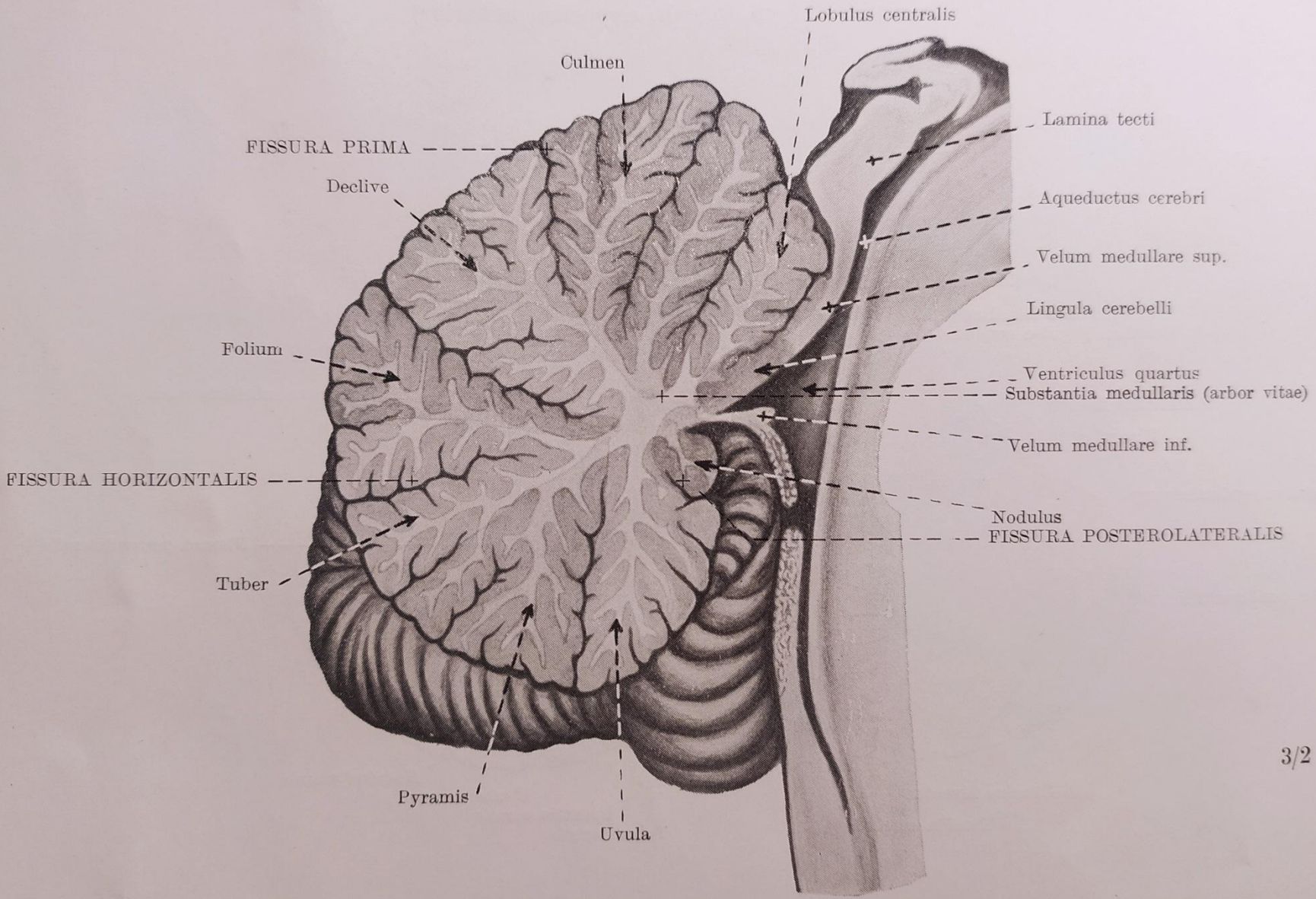


Fig. 29. CEREBELLUM III.
(vermis et hemispherii, aspectus anterior)





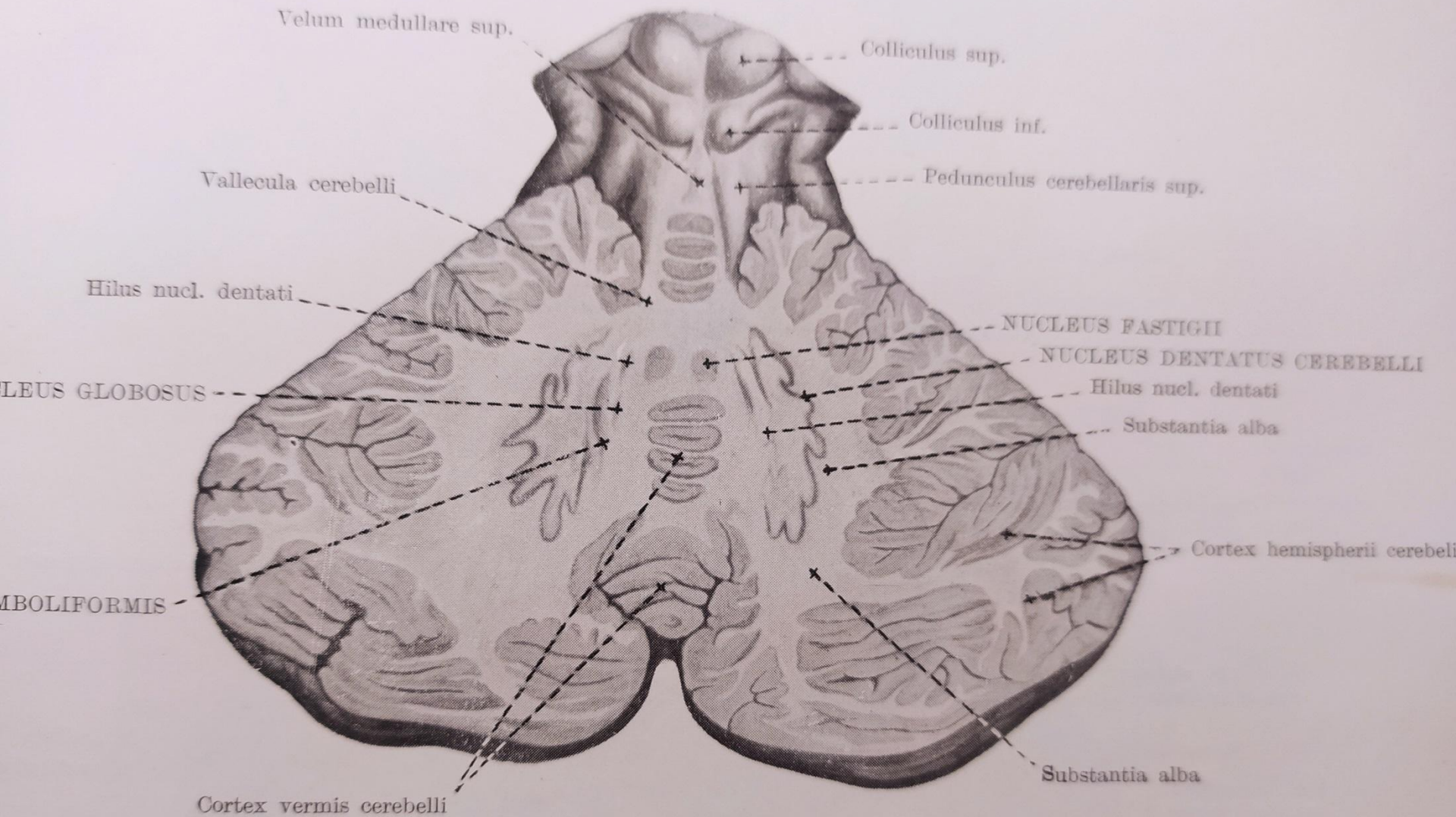


Fig. 33. CEREBELLUM VII.

(nuclei cerebelli, sectio transversalis obliqua, aspectus superior)

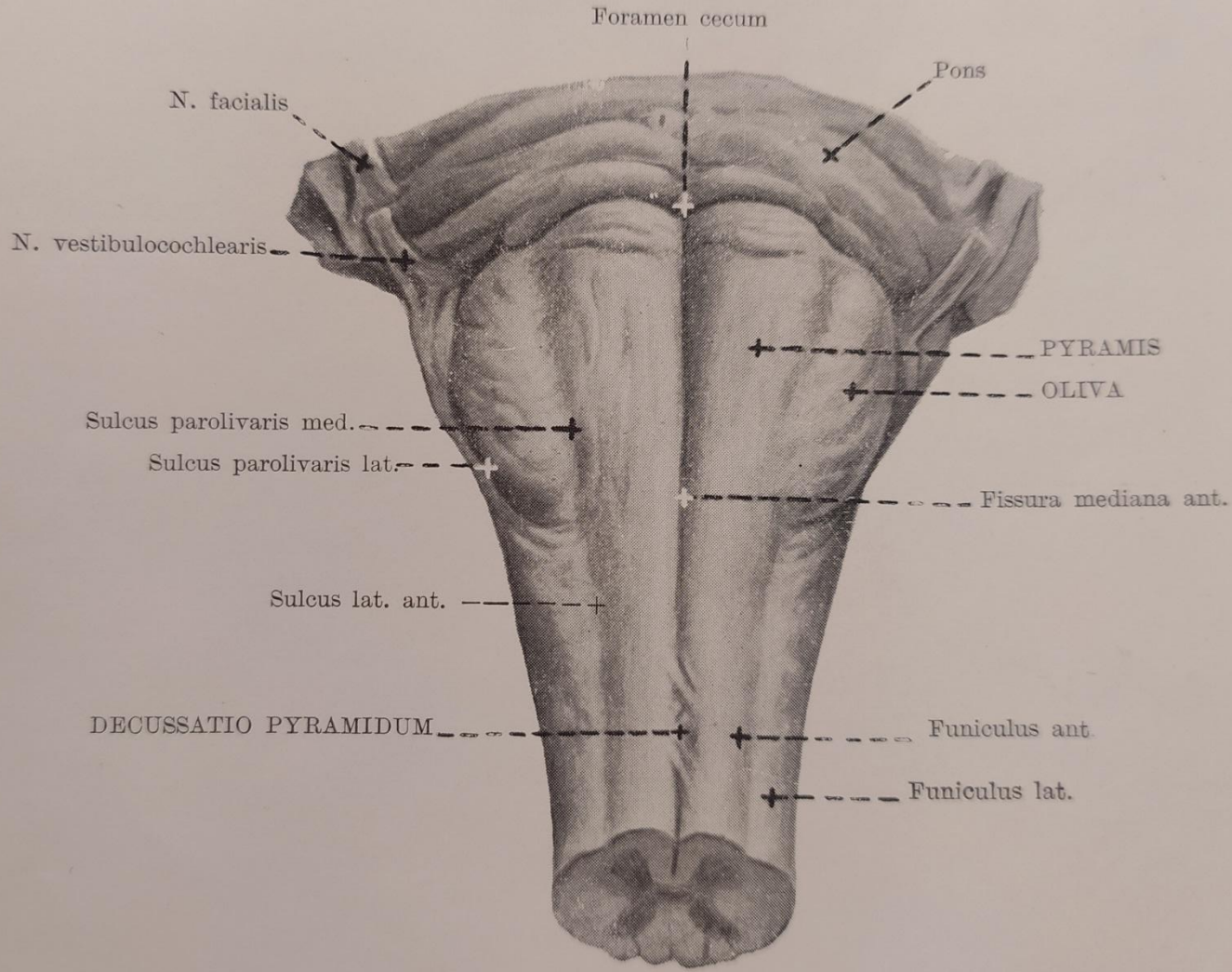
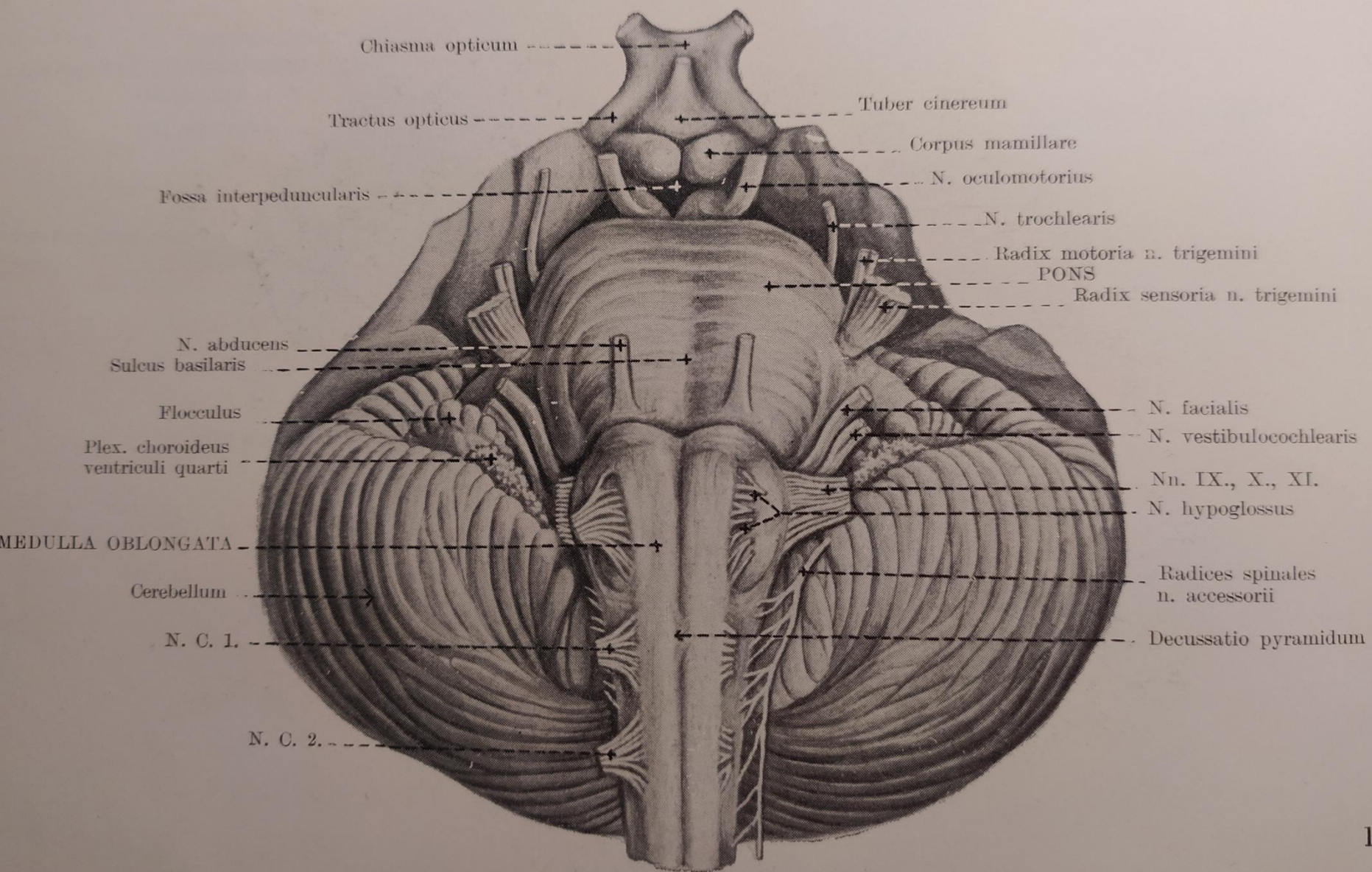
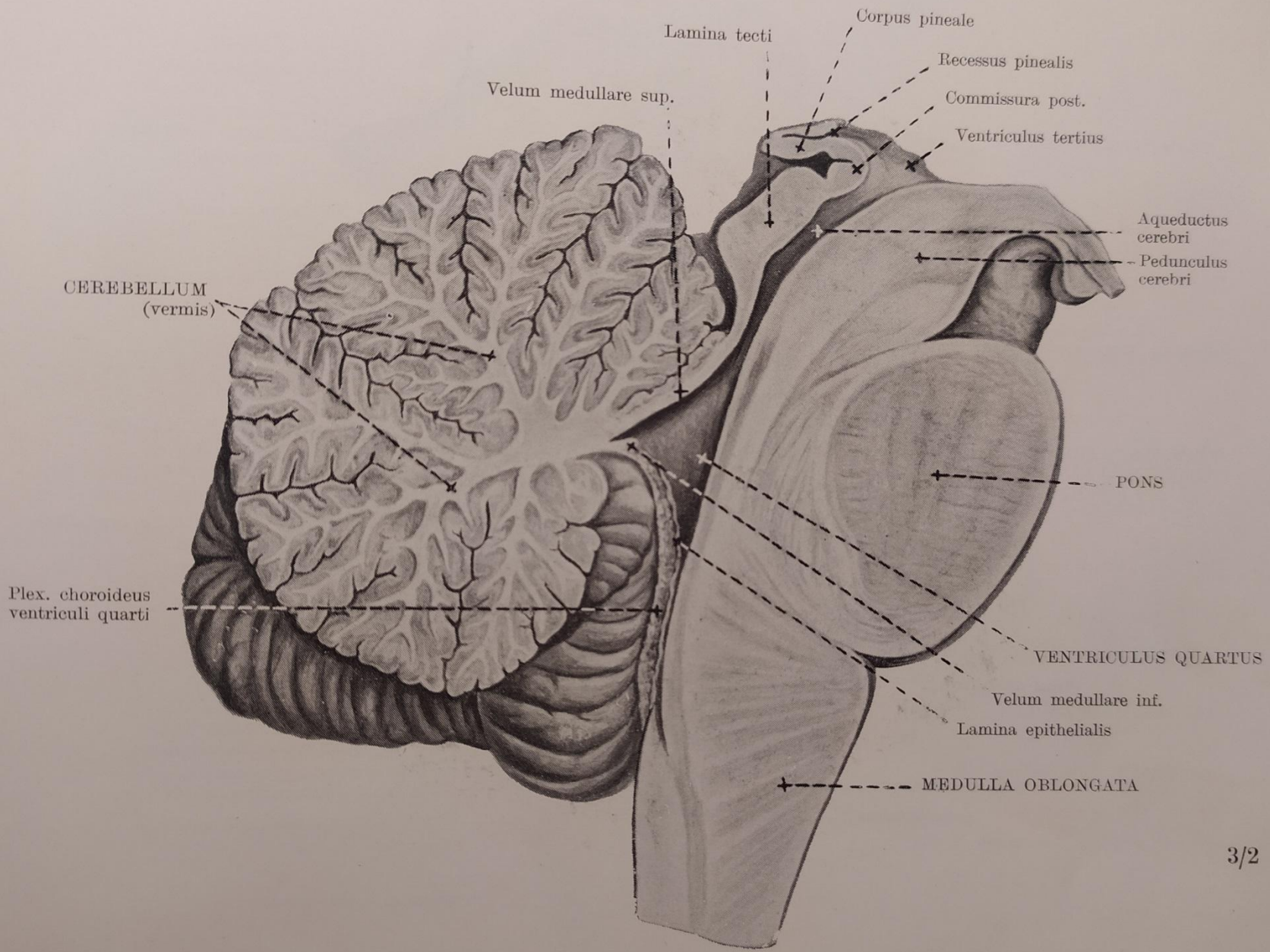
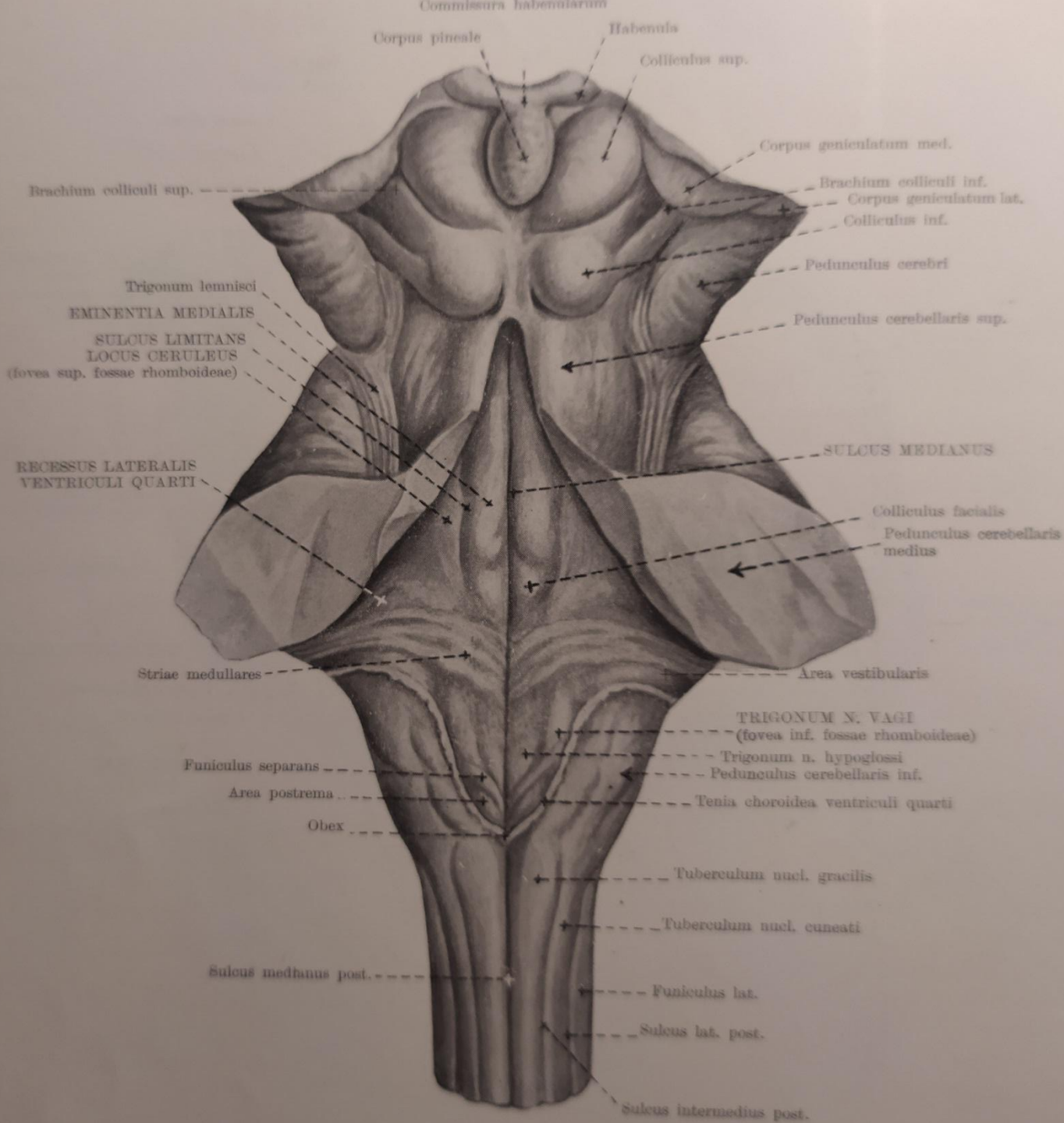


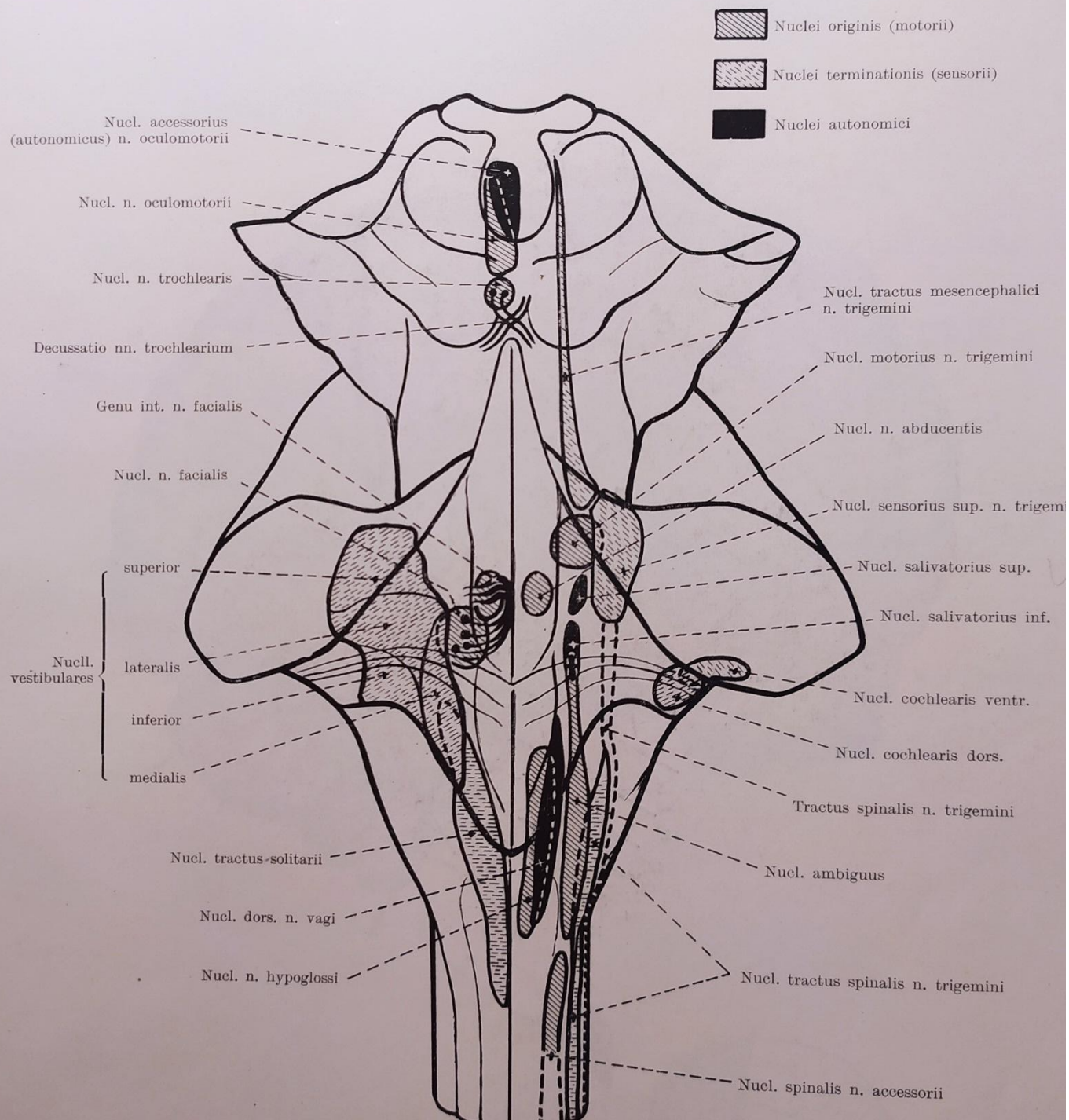
Fig. 34. MYELENCEPHALON

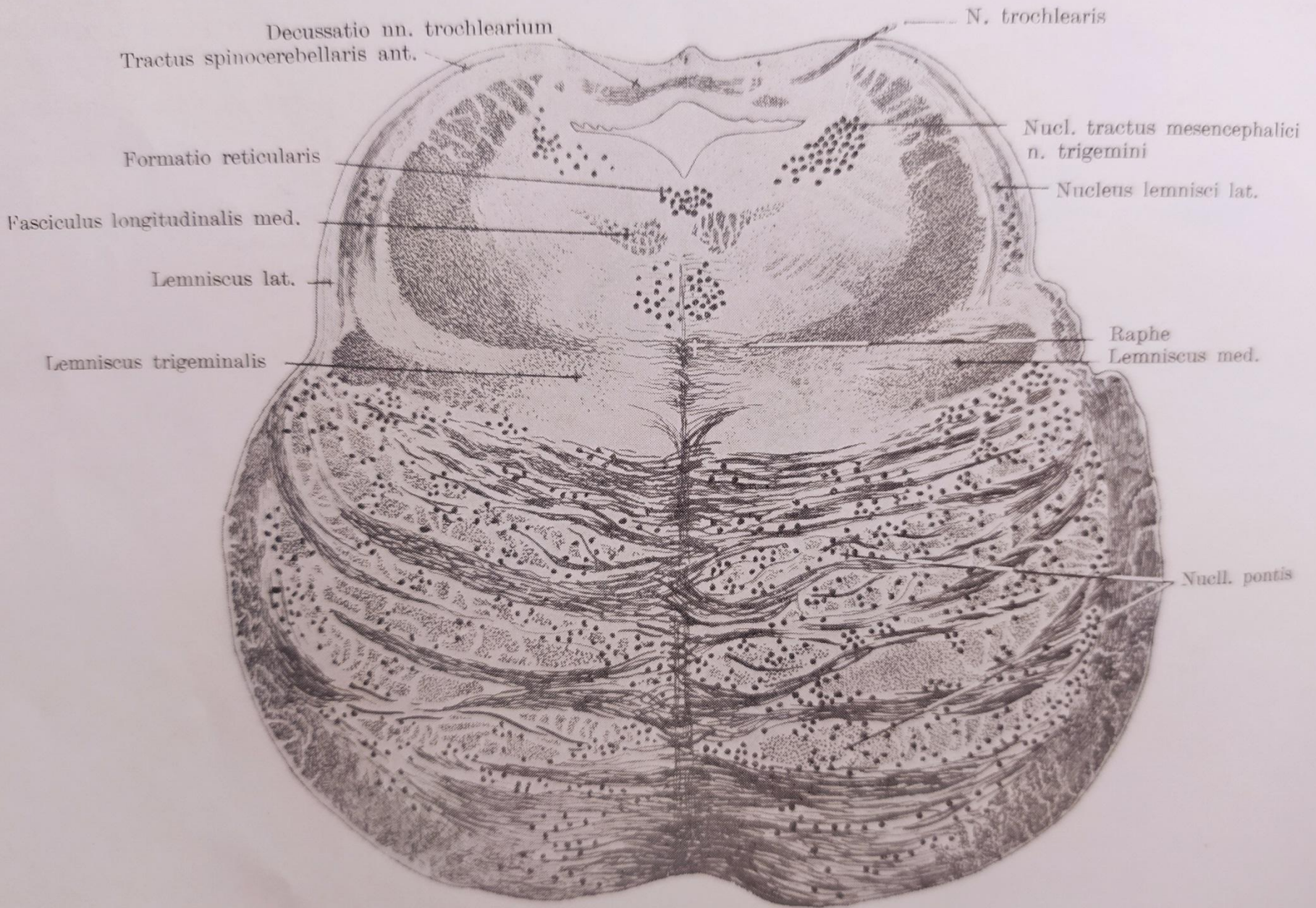
(medulla oblongata)

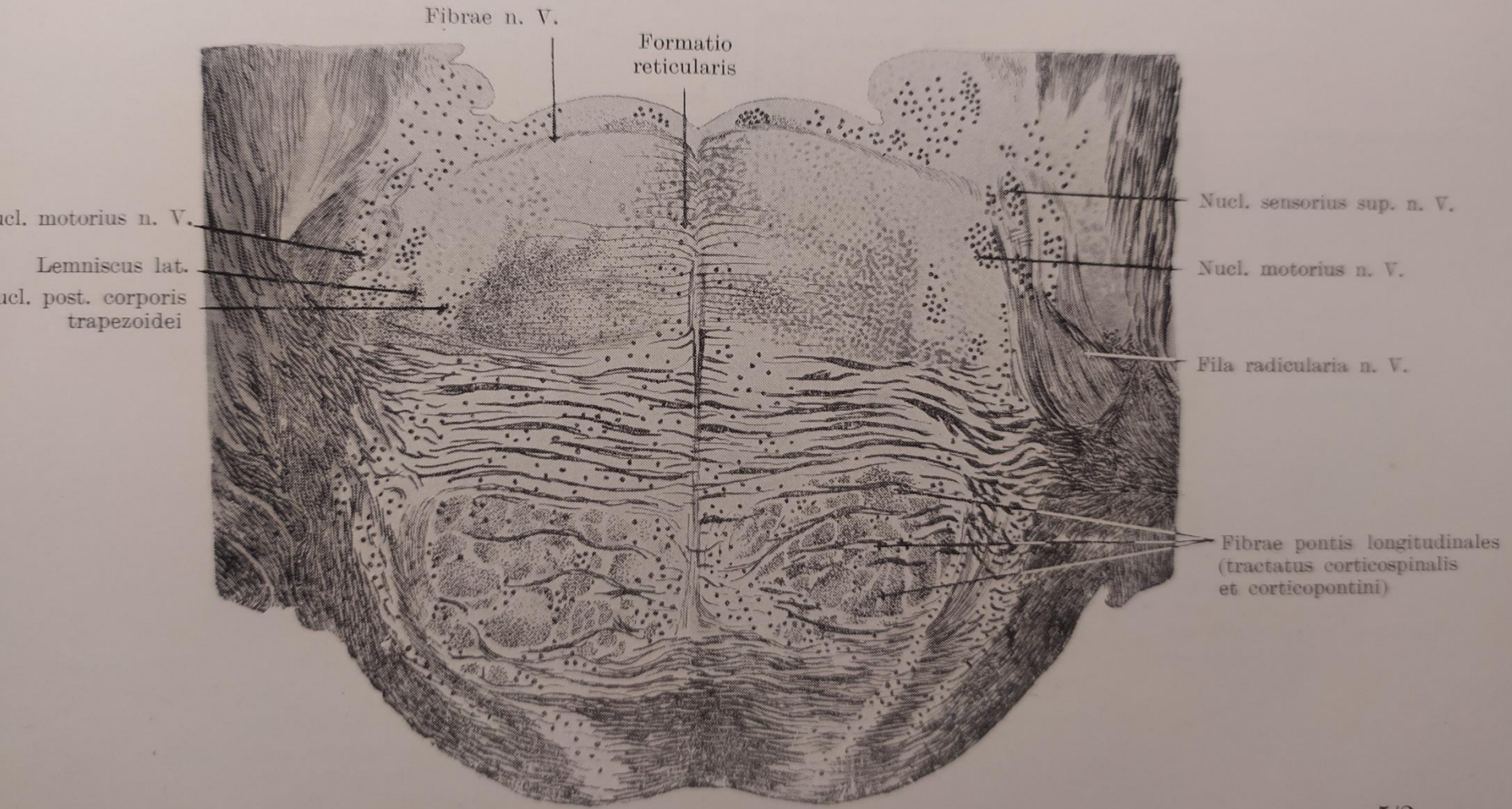












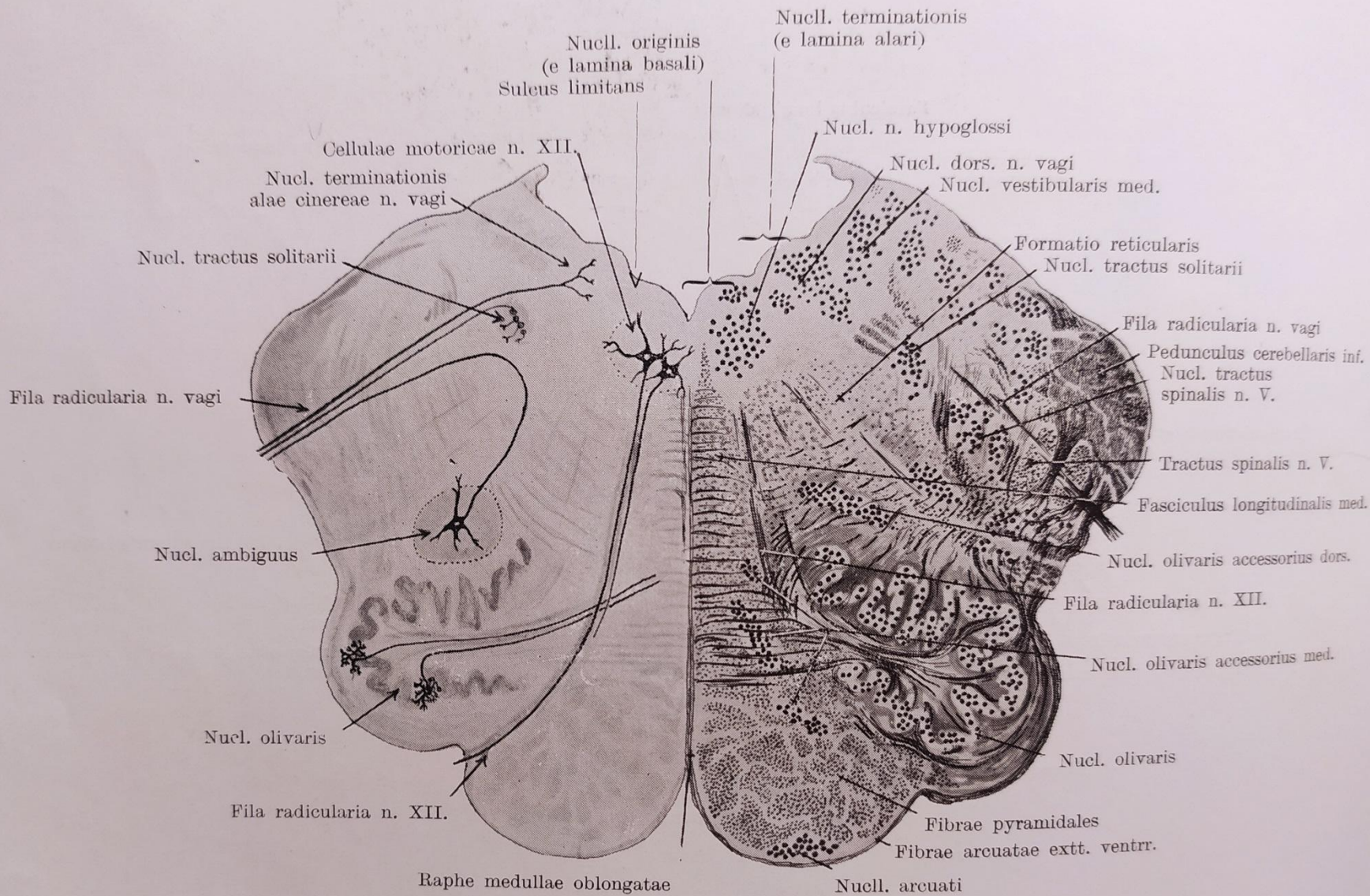


Fig. 54. SECTIO TRANSVERSA MEDULLAE OBLONGATAE II.
 (pars media, cyto- et myeloarchitecturae)

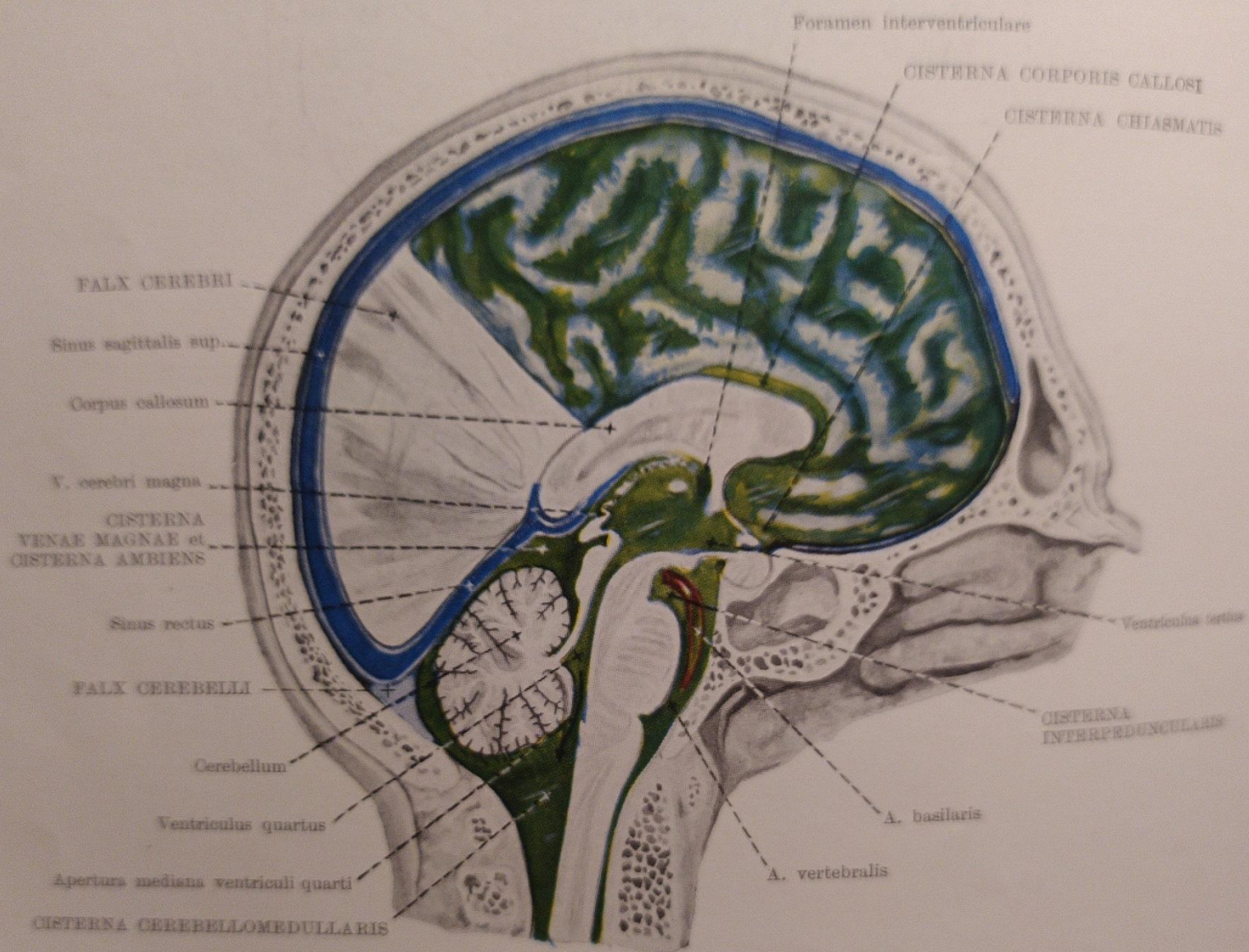


Fig. 80. MENINGES ENCEPHALI ET CISTERNAE SUBARACHNOIDEALES
 (sectio sagittalis paramediana)

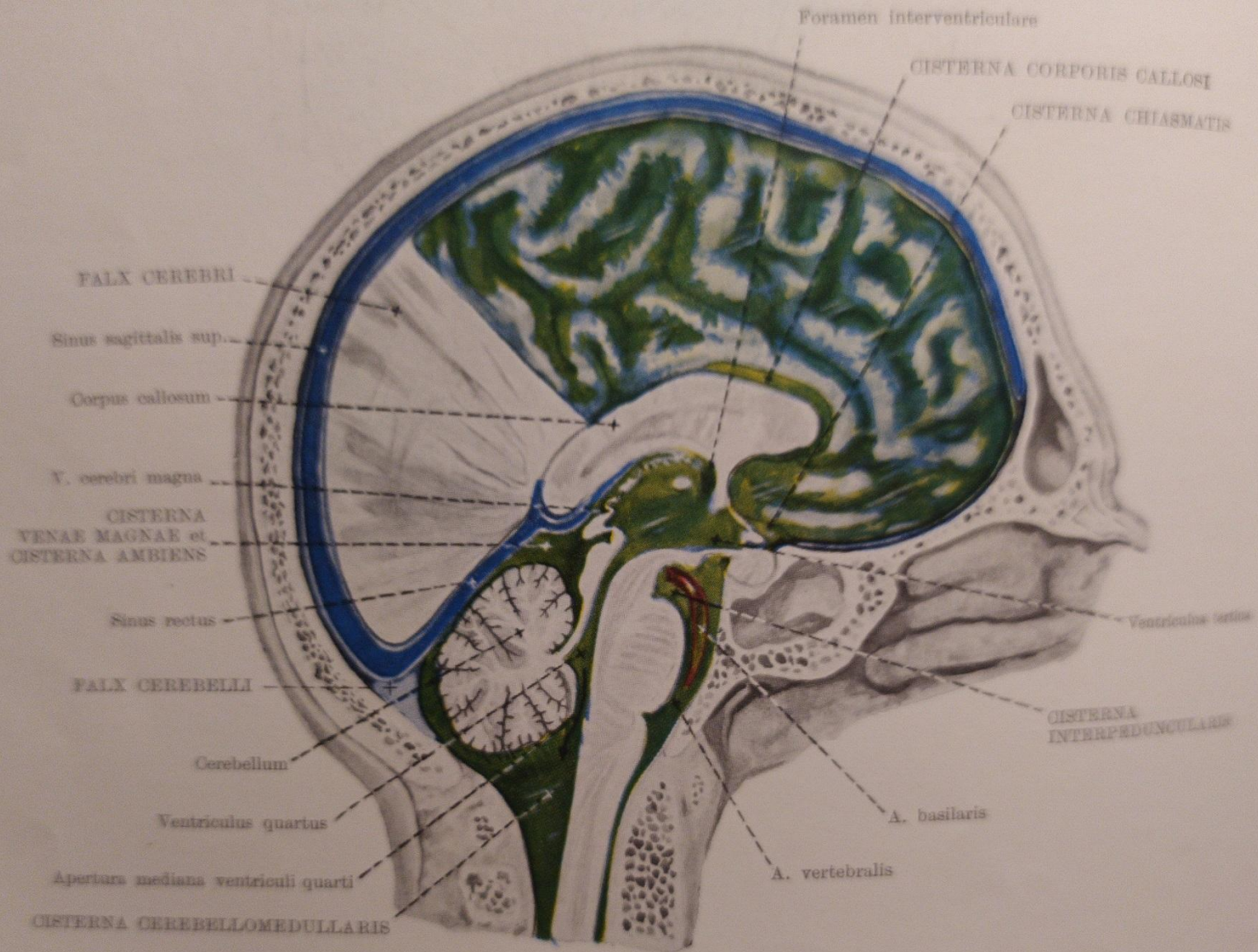


Fig. 80. MENINGES ENCEPHALI ET CISTERNAE SUBARACHNOIDEALES
 (sectio sagittalis paramediana)

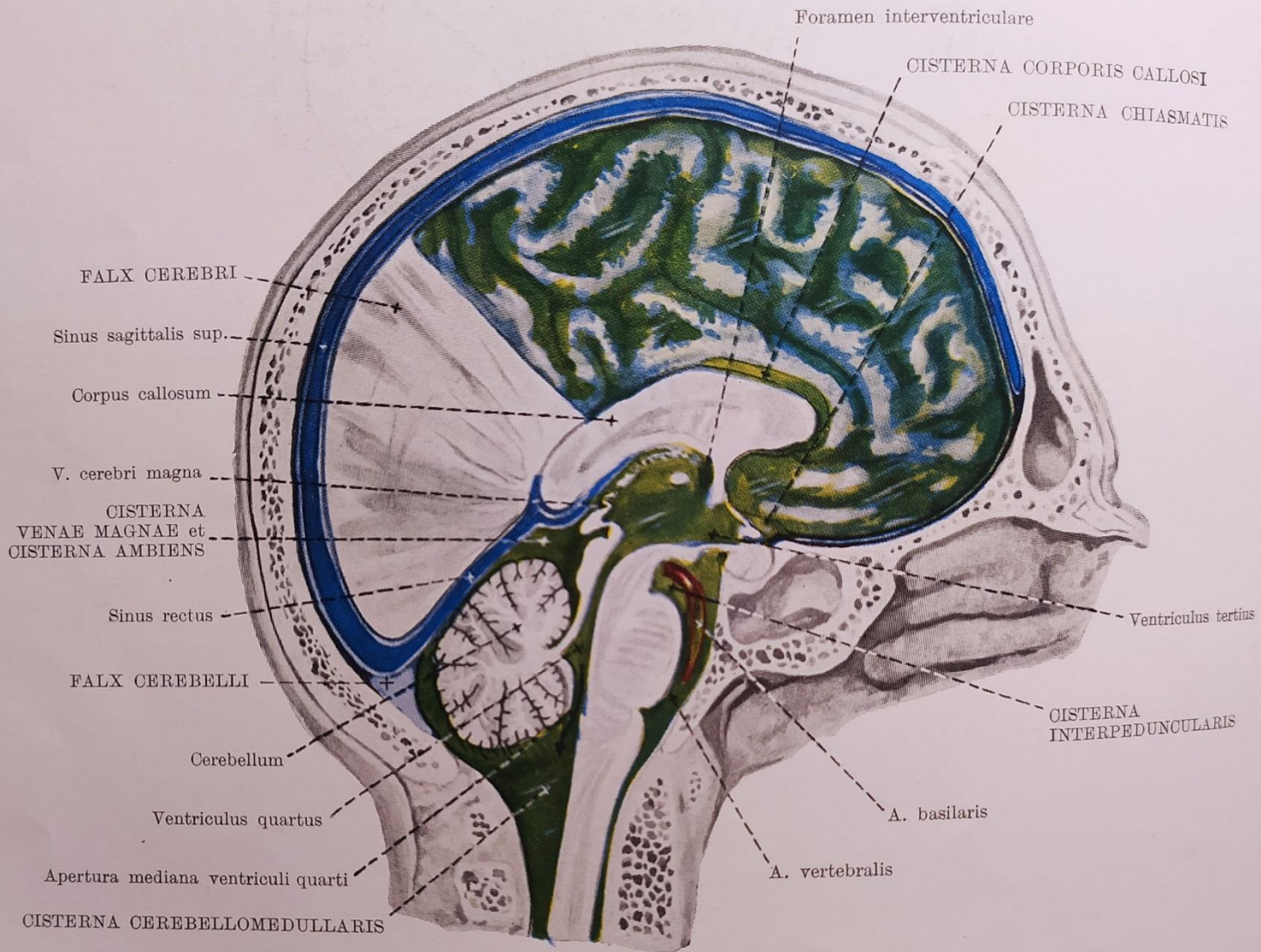
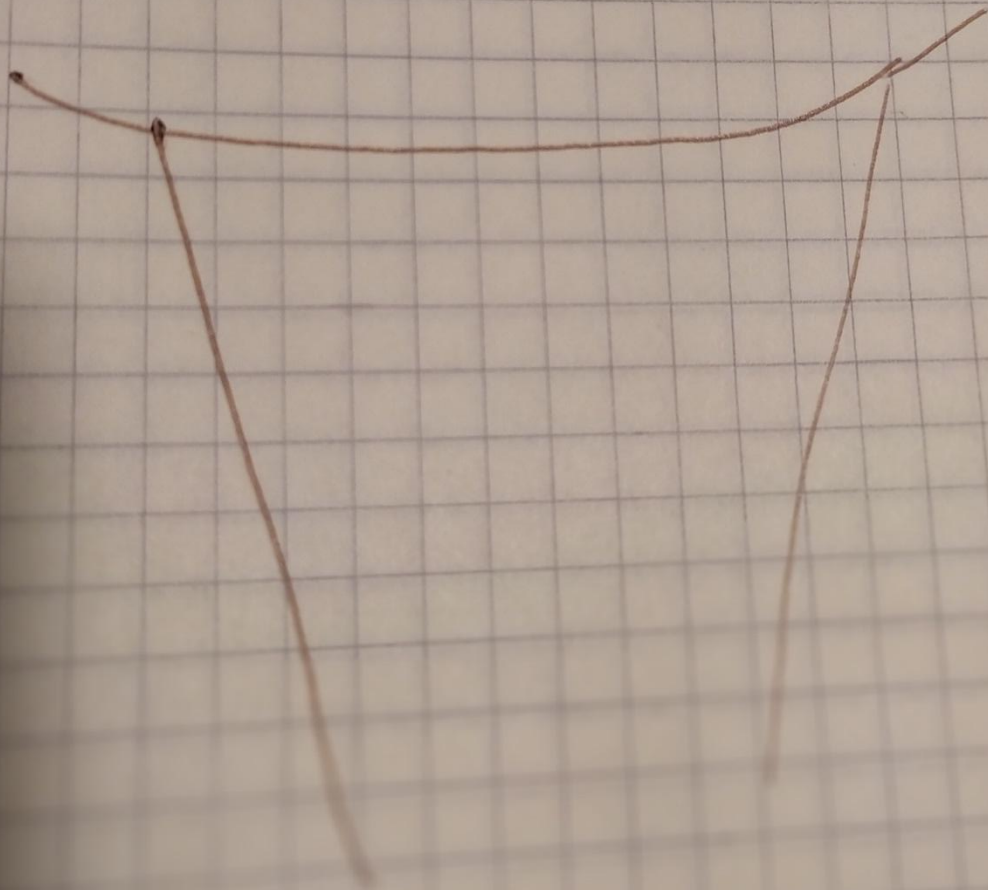
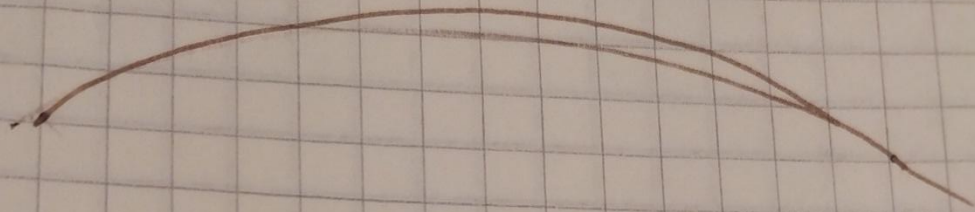
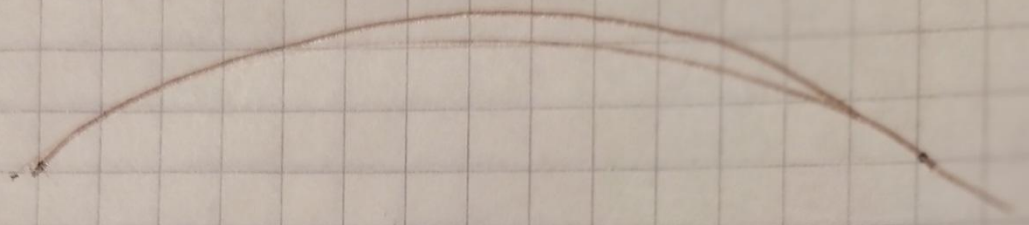


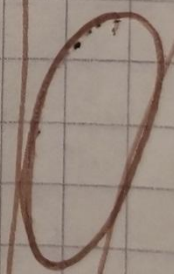
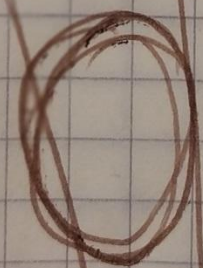
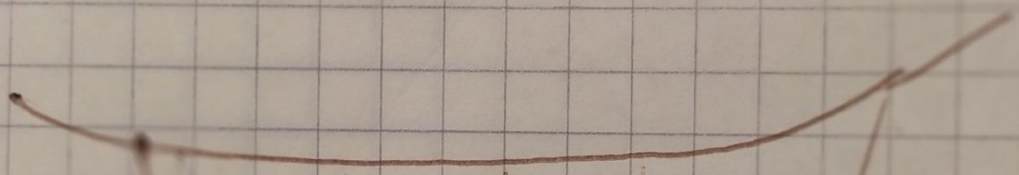
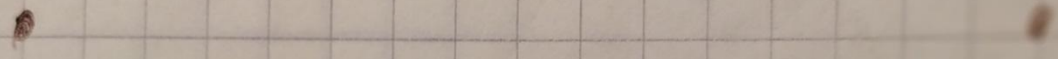
Fig. 80. MENINGES ENCEPHALI ET CISTERNAE SUBARACHNOIDEALES
 (sectio sagittalis paramediana)



VW

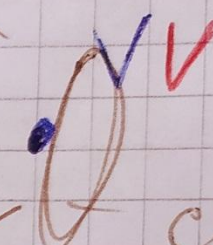


VW



metenceph.

V



crus
medius
of
cereb.

myelenceh.

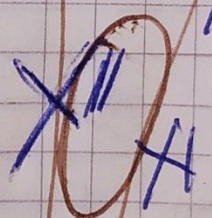
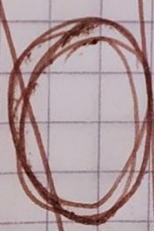
VIII
VII

VI

VI

IX

crus
inf
of
cereb.



crus
inf
of
cereb.

medulla spinalis

1)
2)

VIII
•
•
•
•
•

XII
XI
X
IX
VIII
VII
VI
V
IV
III
II
I

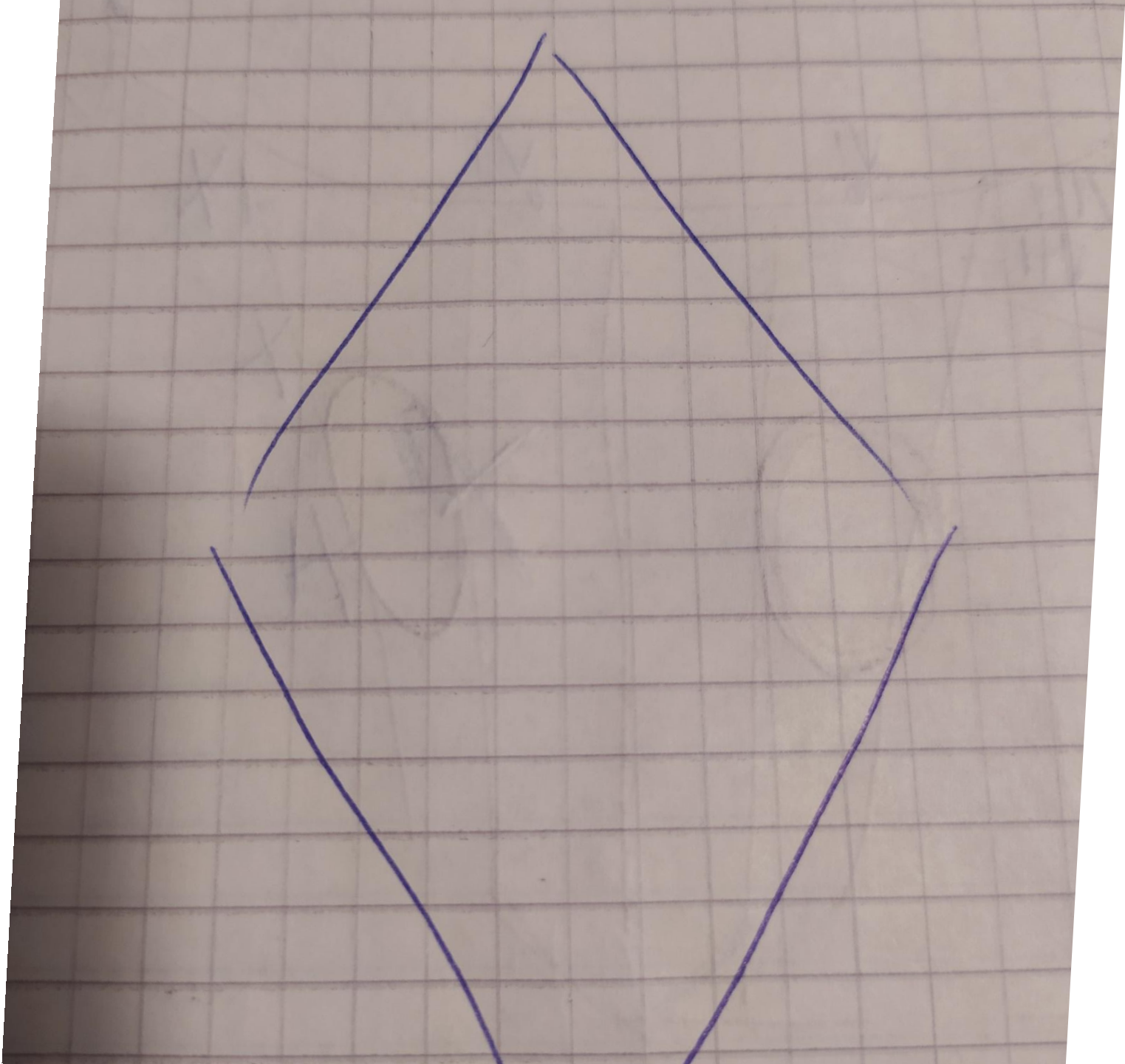
X
IX

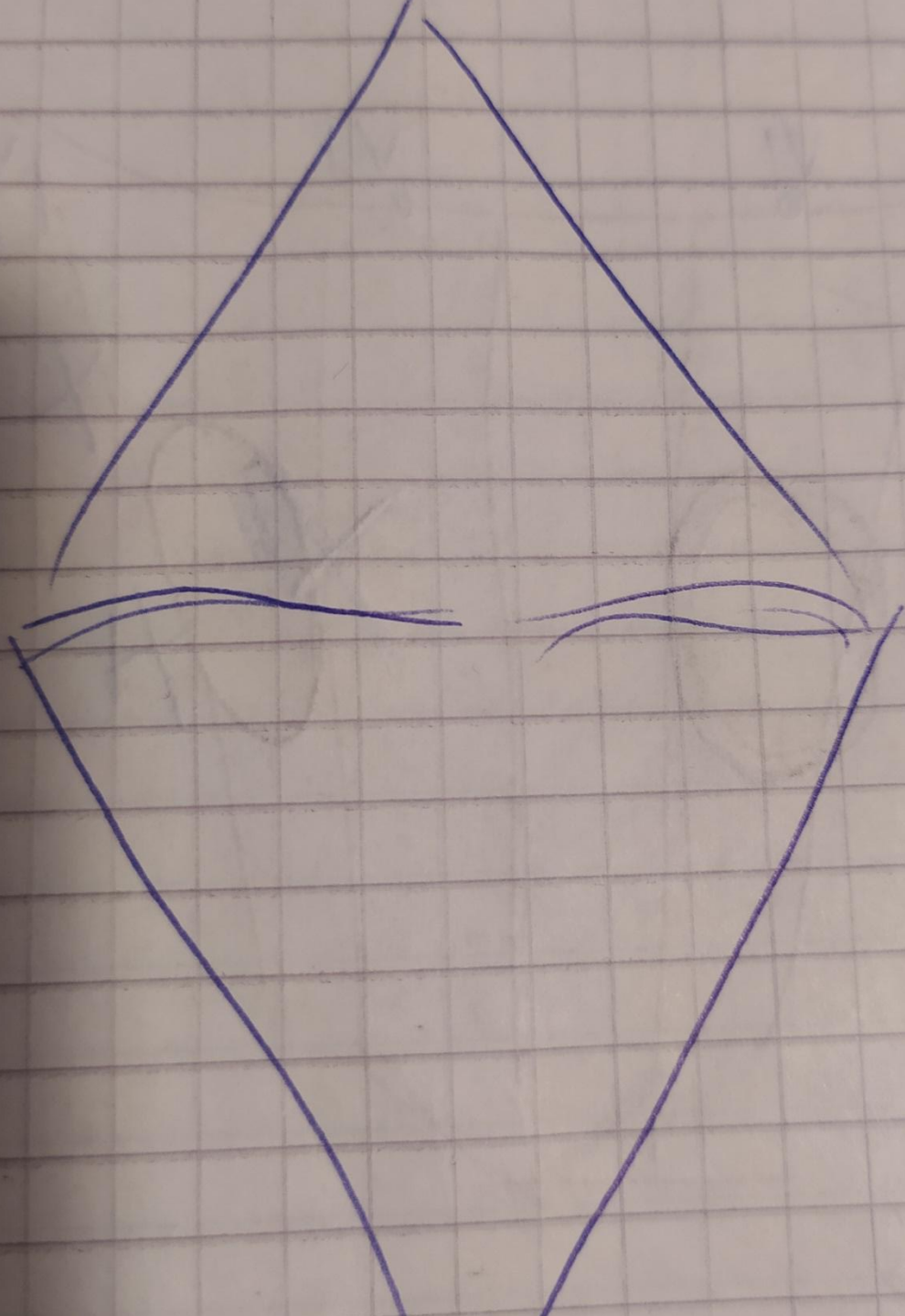
X
IX
VI

X
IX

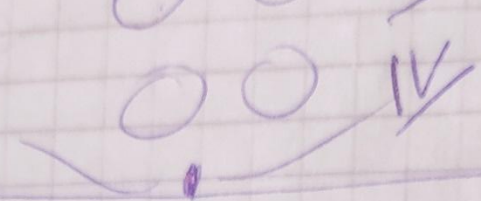
VII

III
I

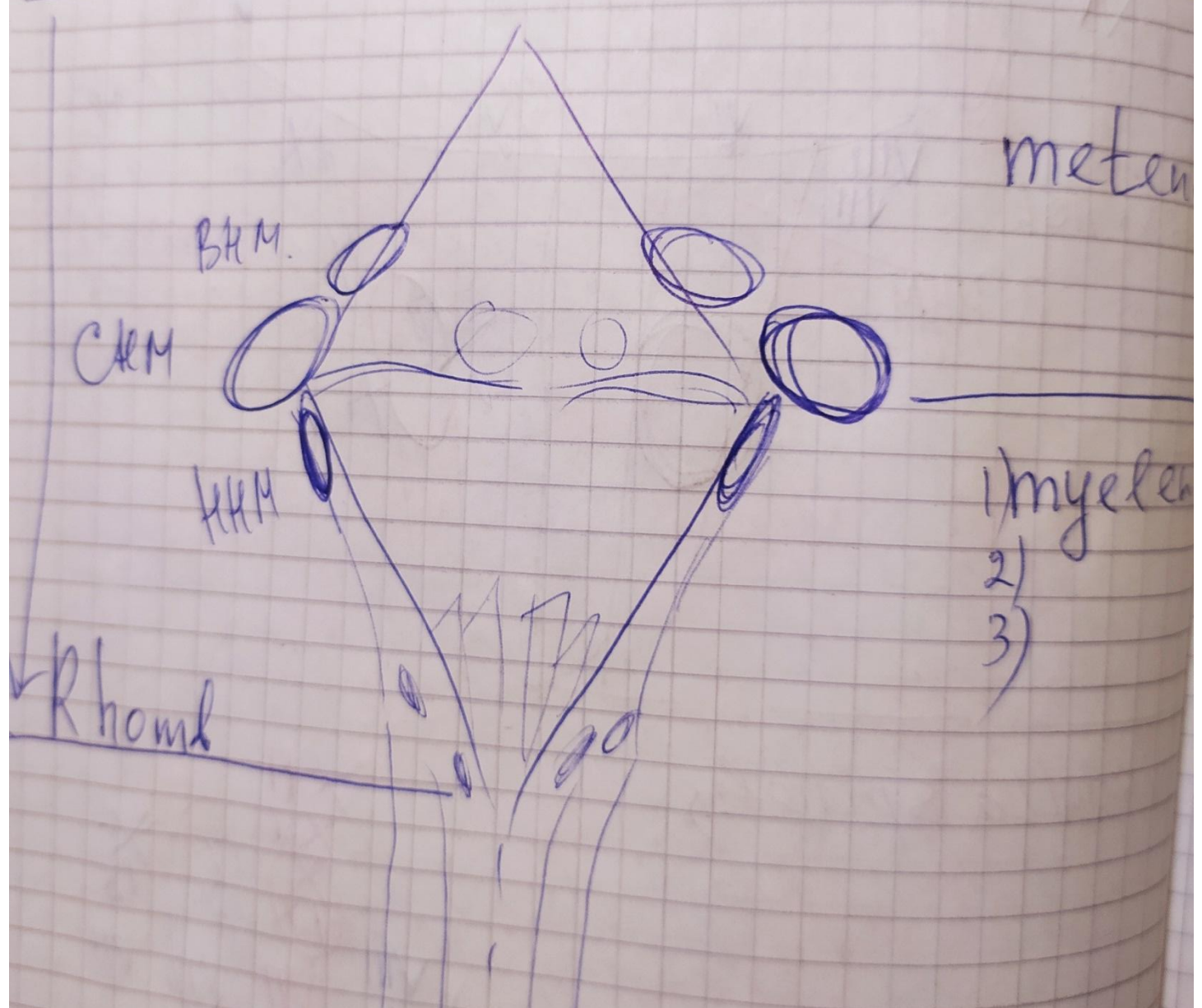




mes

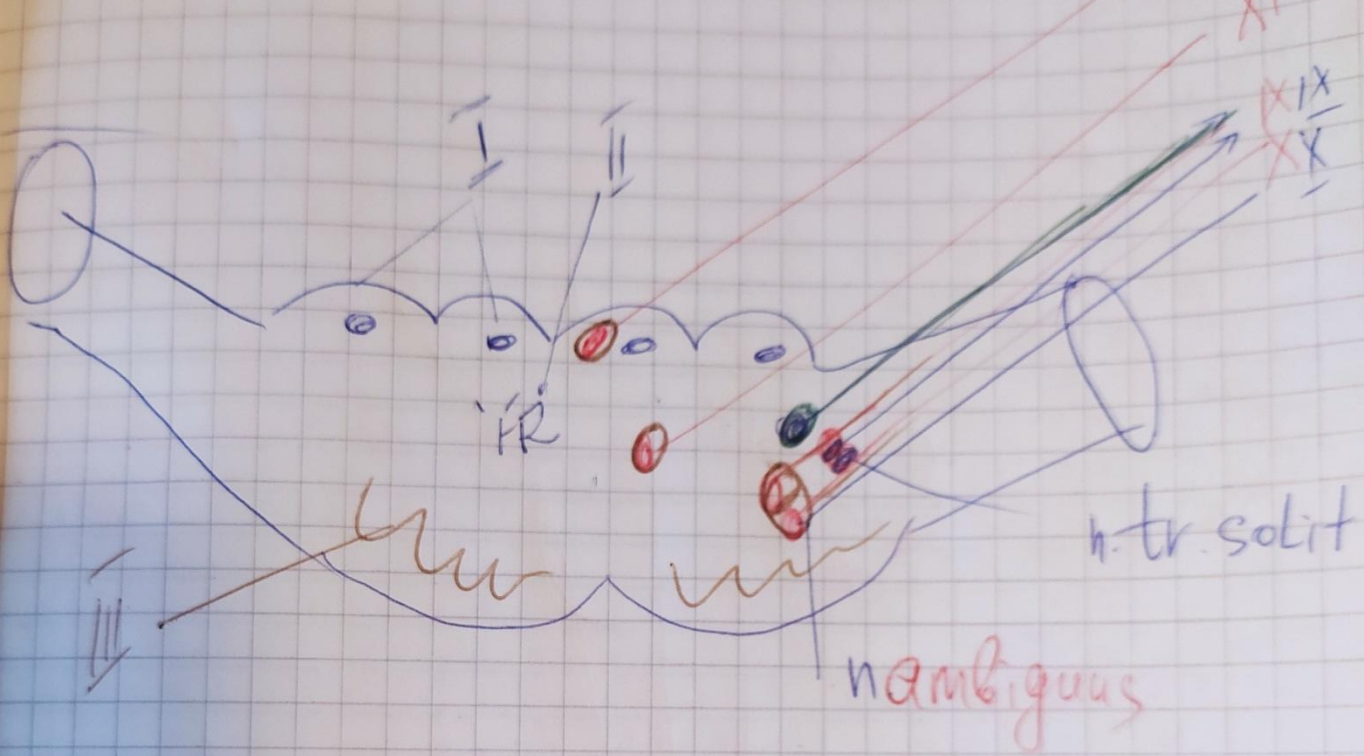


meten



- 1) myelen
- 2)
- 3)

Rhomb



XII
XI
X
IX

IV

X
IX

X
VII

name

Наз.				уз магпа	уз репен

S. grisea

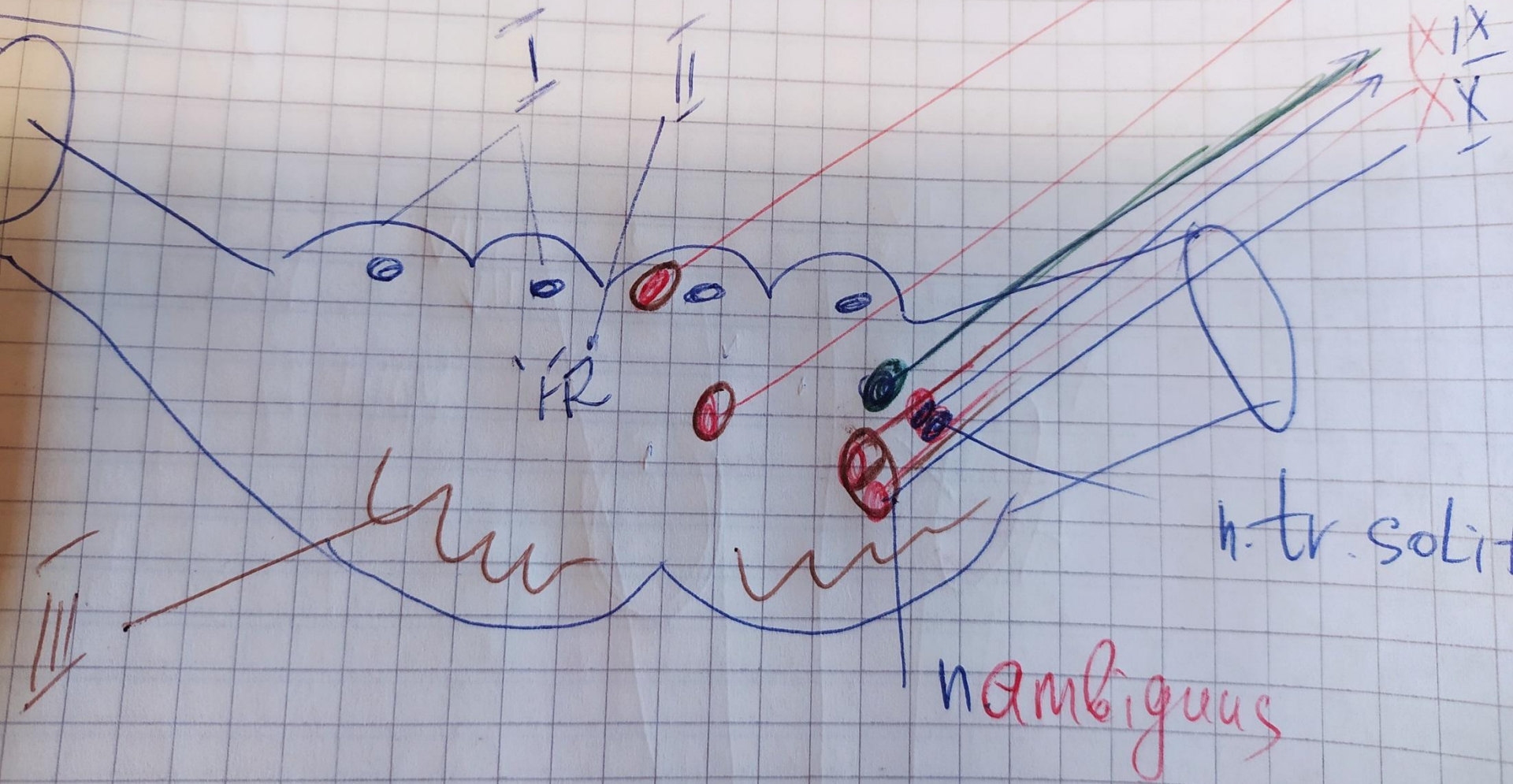
4:4

myelench.

XIII

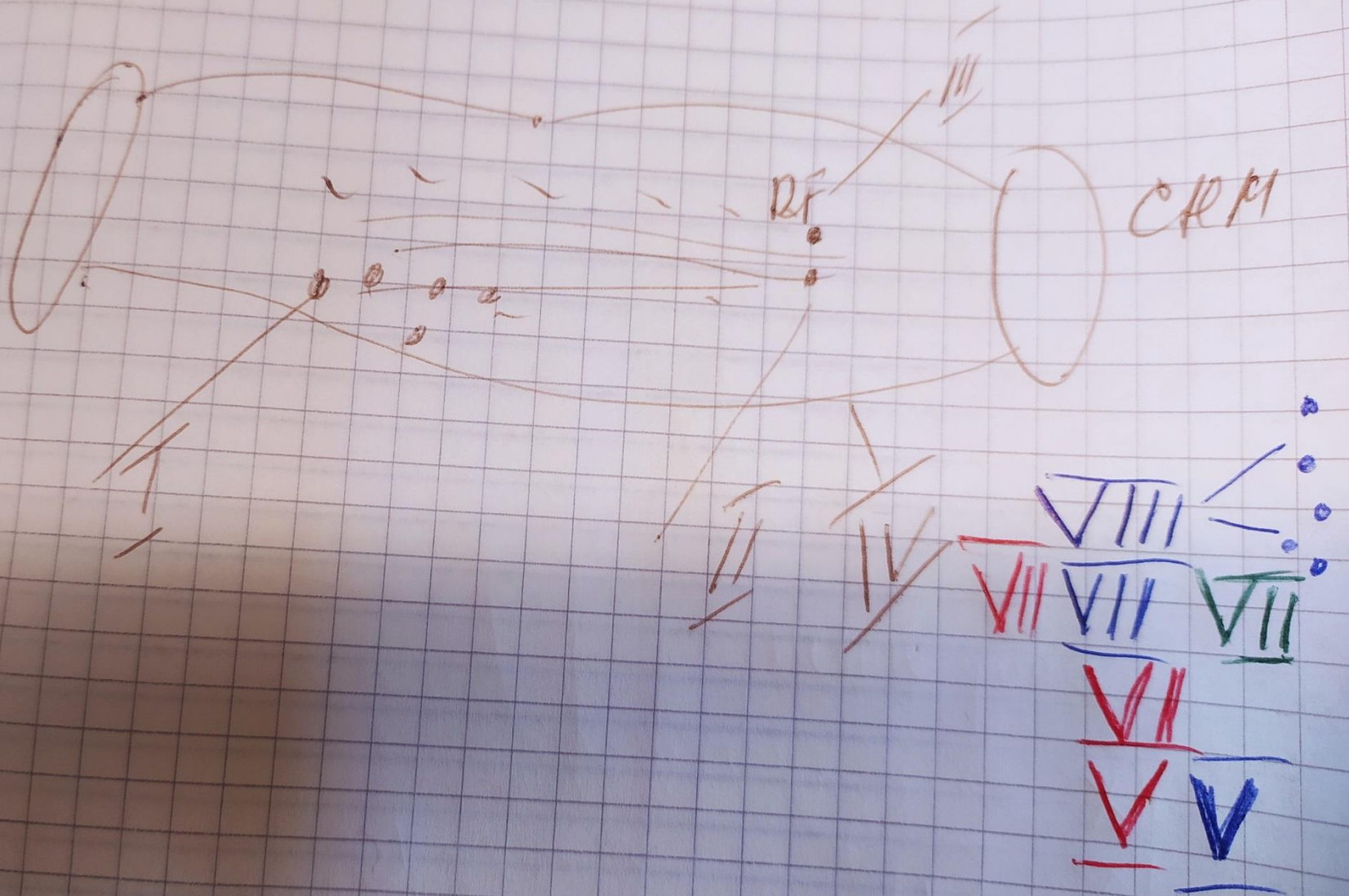
XI

XIX
X



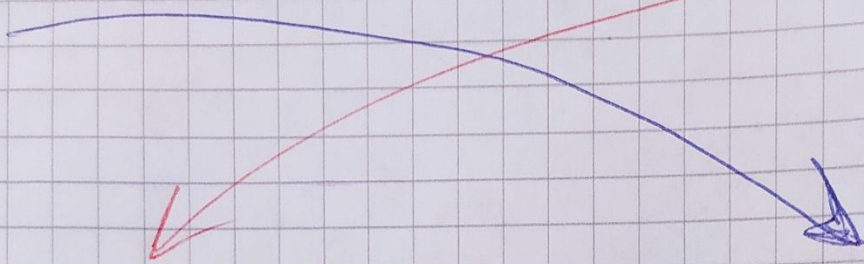
4:4.

met.

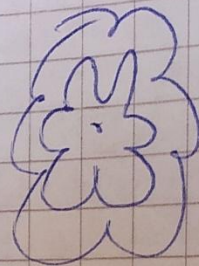


Aff

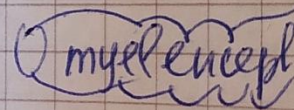
Eff



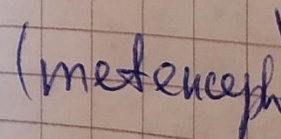
① Lemniscus - tractus spinalis



② l. medialis - tractus

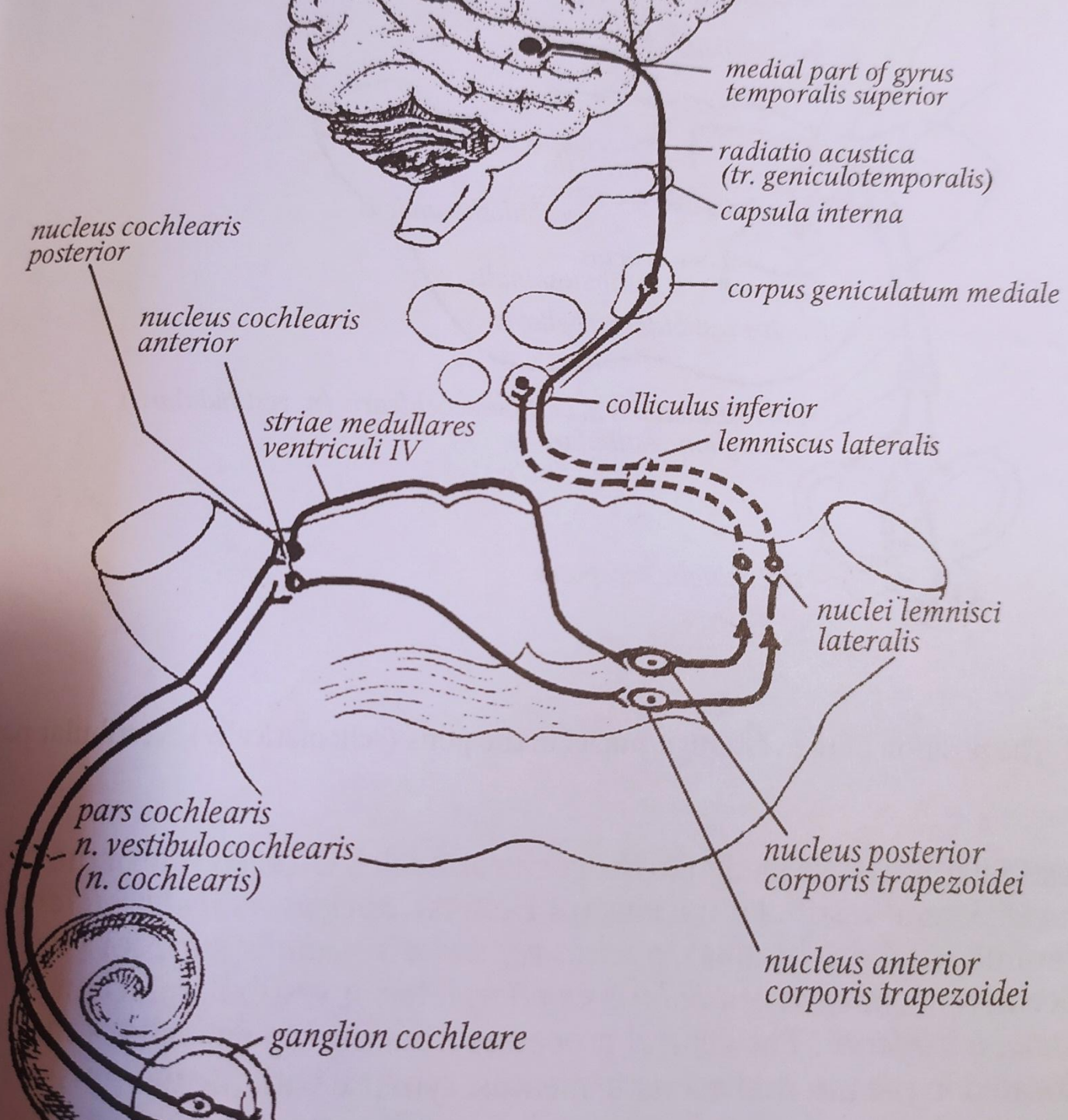


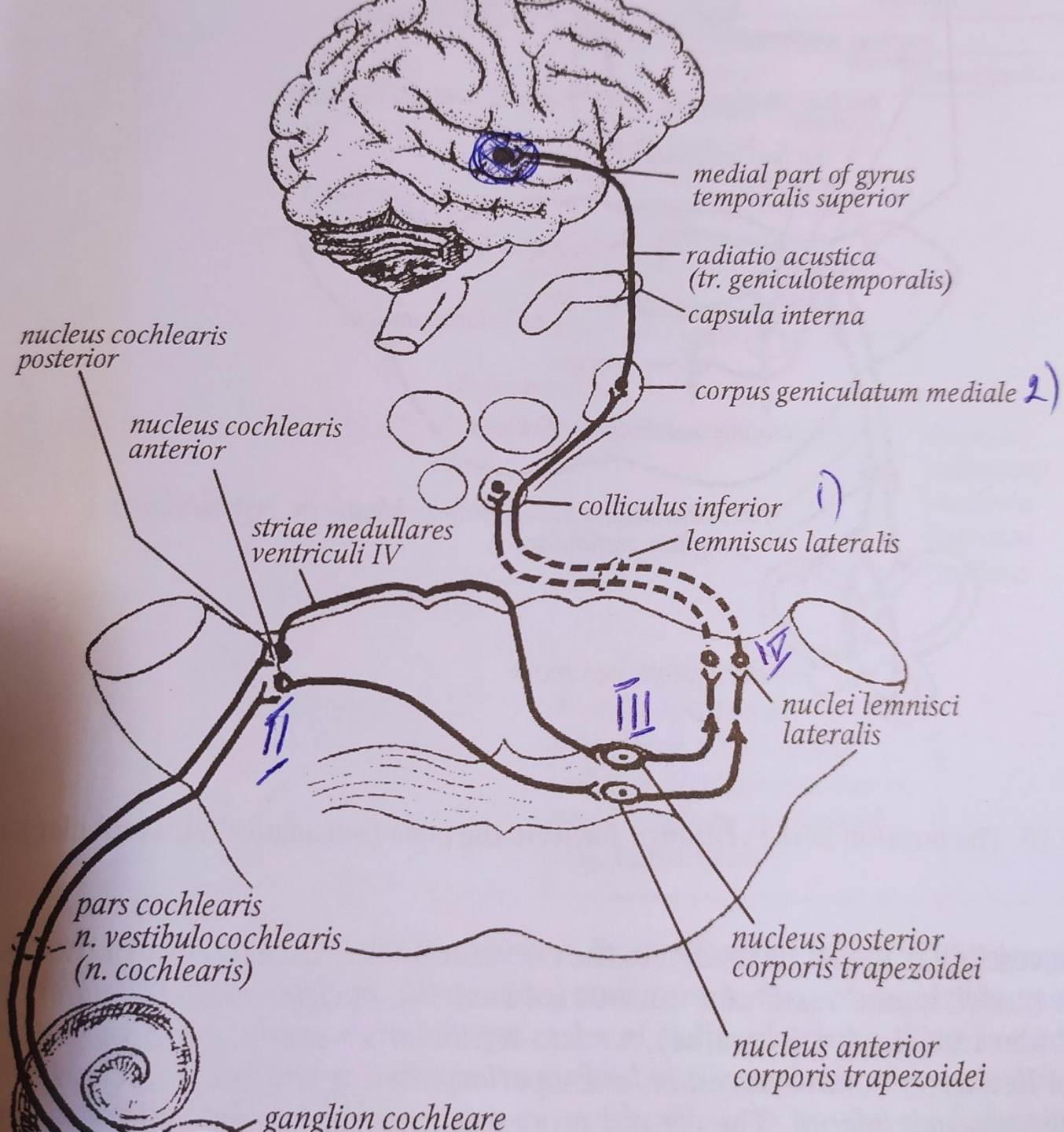
③ l. lateralis

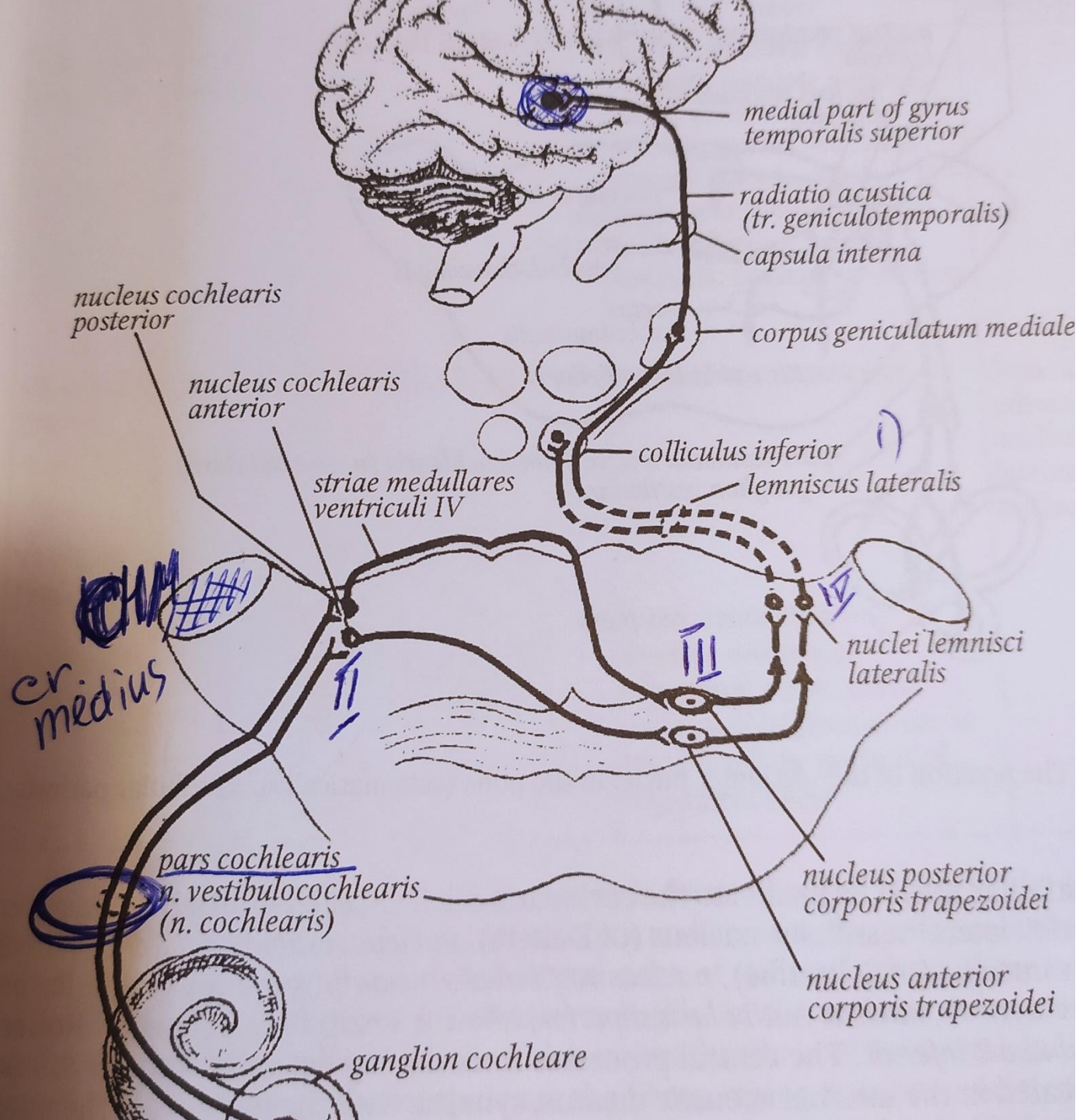


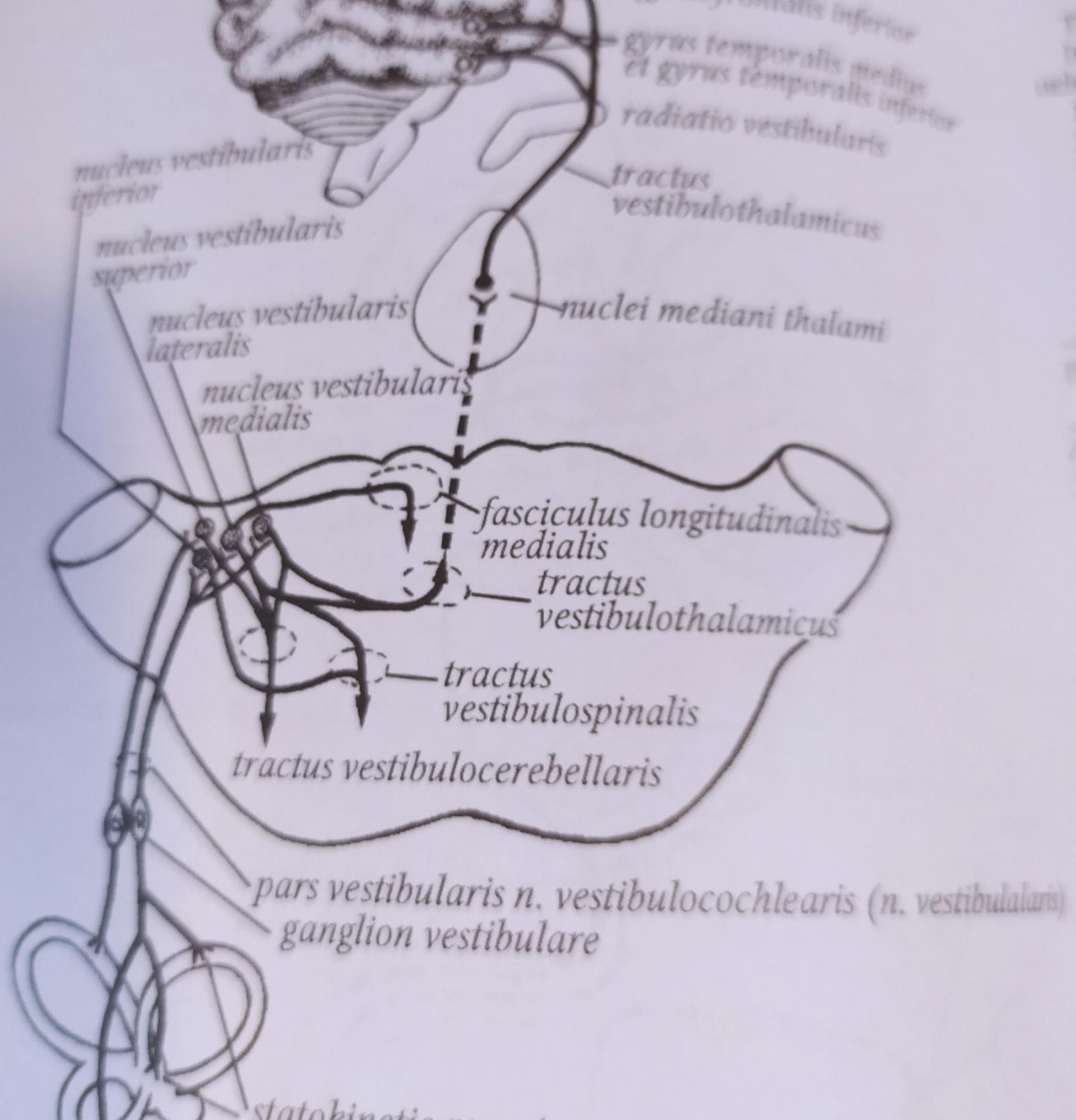
④ l. trigeminalis - tractus











nucleus vestibularis inferior

nucleus vestibularis superior

nucleus vestibularis lateralis

nucleus vestibularis medialis

fasciculus longitudinalis medialis

tractus vestibulothalamicus

tractus vestibulospinalis

tractus vestibulocerebellaris

pars vestibularis n. vestibulocochlearis (n. vestibularis)

ganglion vestibulare

statokinetic

gyrus frontalis inferior

gyrus temporalis medius et gyrus temporalis inferior

radiatio vestibularis

tractus vestibulothalamicus

nuclei mediani thalami

(medial to ...)
The descending fibres of the ...
located in the brain.

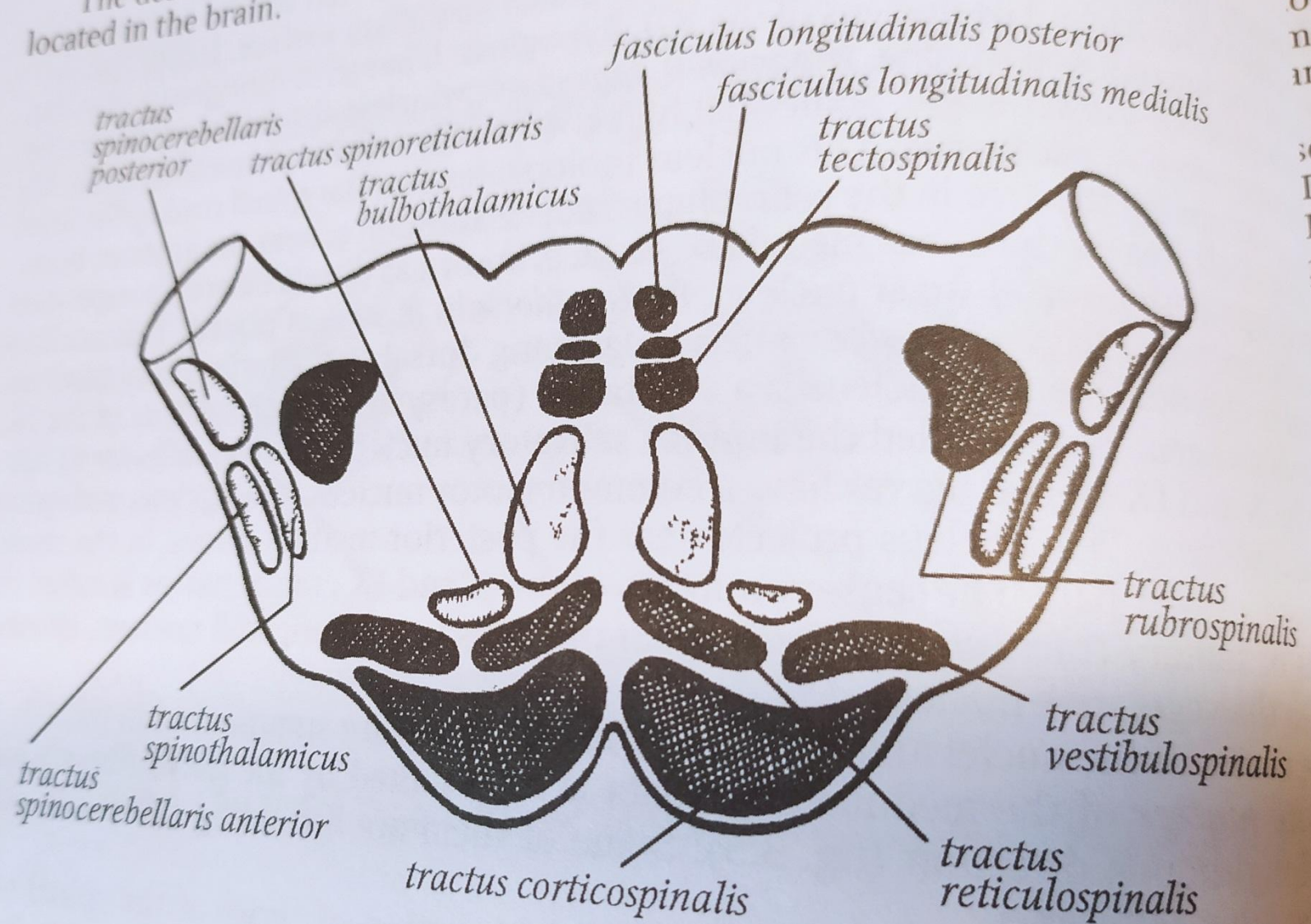


Fig. 3.5. Diagram showing the position of the conduction tracts in a transverse section of the medulla oblongata

The largest ...

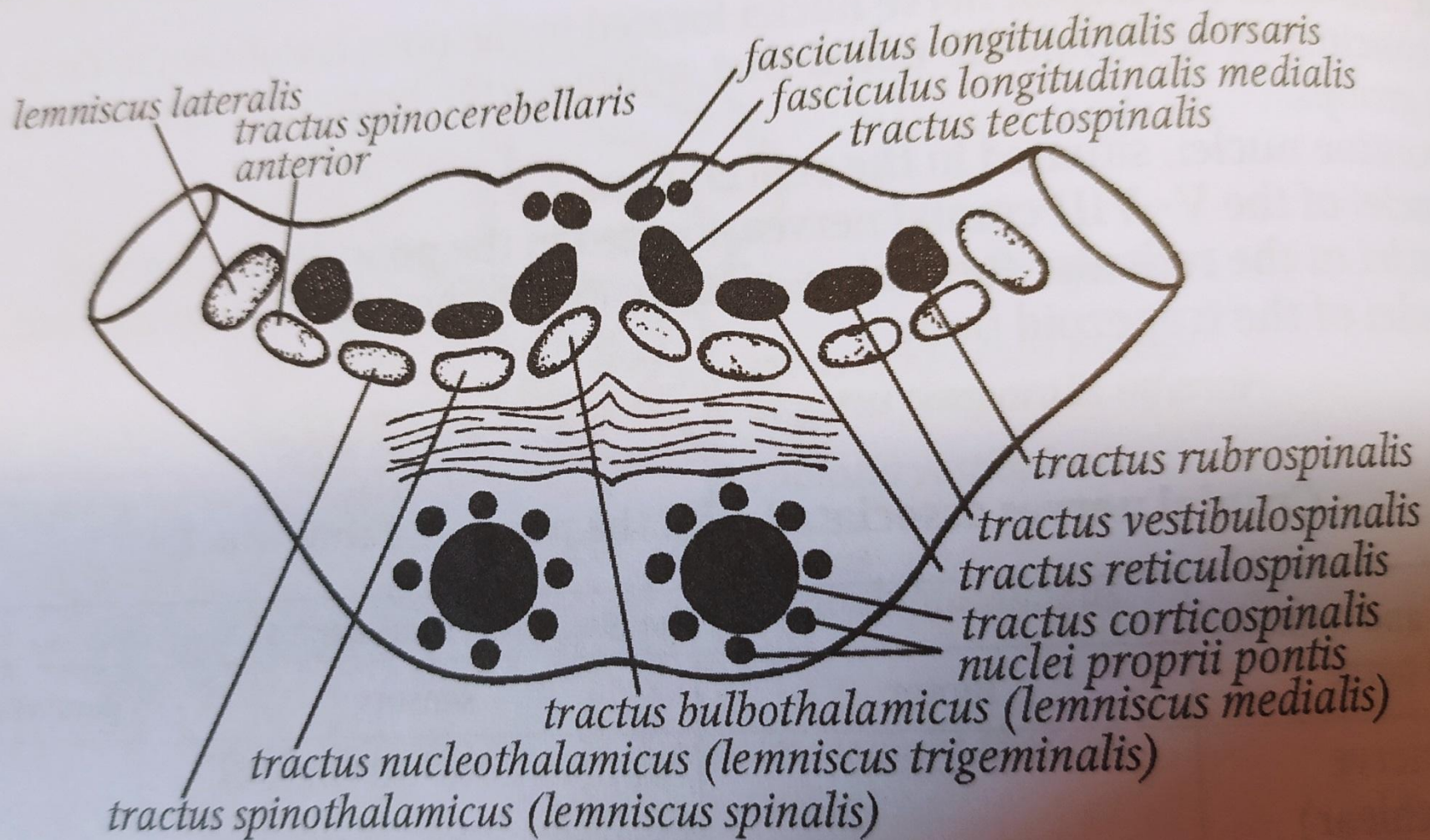


fig. 3.11. The position of the conduction tracts on a transverse section of the pons (sch