

THE HERMITAGE

A stylized illustration of a grand museum gallery. The scene is set in a large, ornate room with a high ceiling featuring a central chandelier and decorative moldings. The walls are a light teal color, adorned with several large, empty golden picture frames. In the center, a double wooden door is flanked by two muscular, white statues of Atlas. Above the door is a decorative archway. On either side of the door are arched windows containing potted plants. The floor is a light beige with a large, intricate floral pattern in the center. Three tourists are present: a woman in a pink top and blue pants on the left, a man in a blue vest and brown pants in the middle, and a man in a green jacket and red shorts on the right, all holding up their phones to take photos. The overall style is clean and modern with a warm color palette.

GENERAL



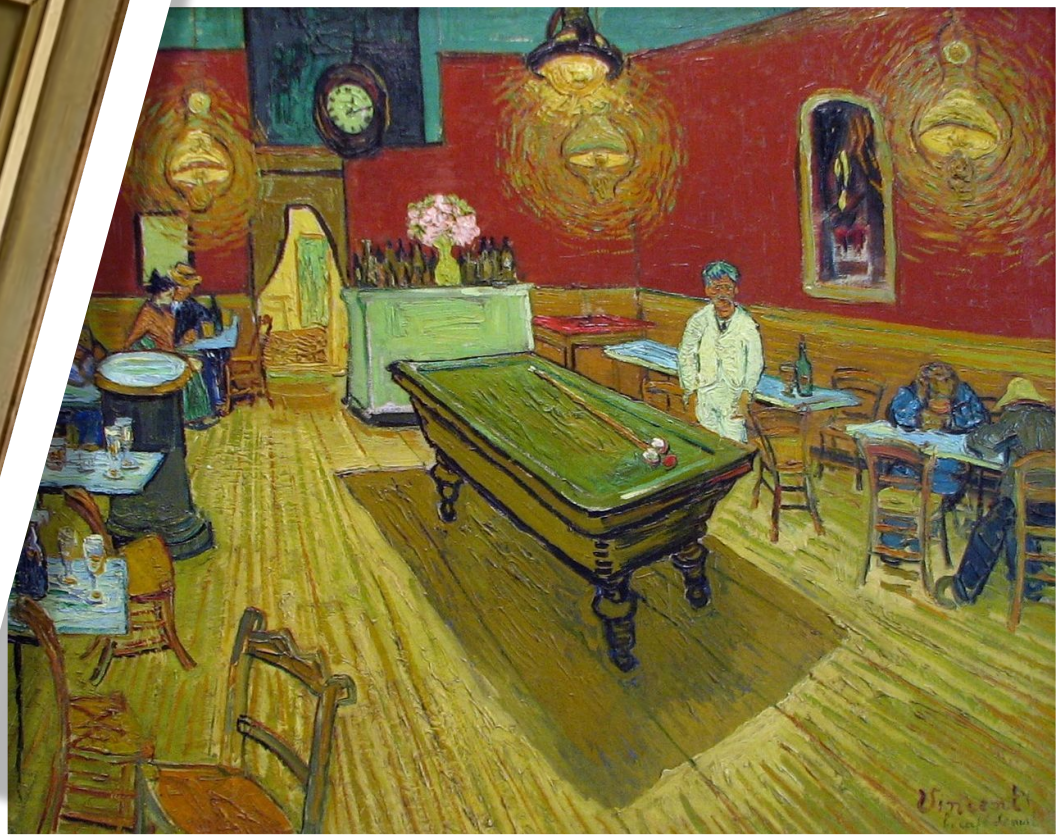
BEGINNING



NEW BUILDING



THE REVOLUTION



WWII



NEWEST TIMES



EXHIBITION

The collection of the State Hermitage includes over **3 million works of art** and world culture artefacts. It contains paintings, graphic works, sculptures, works of applied art, archaeological artefacts and numismatic objects.

The State Hermitage Museum inventory contains **3 150 428** items (as of December 31, 2016)

- 1 125 975 – numismatic objects;
- 808 695 – archaeological artefacts;
- 625 889 – graphic works;
- 358 938 – works of applied art;
- 60 521 – photos;
- 17 165 – paintings;
- 14 016 – arms and armoury;
- 12 814 – sculptures;
- 2 853 – documents;
- 2 609 – history of technology and techniques objects;
- 360 – rare books;
- 295 – printed materials;
- 148 133 – other items.