

Круглый Стол для Вескона 2020

Ведущий - Астальдо

Вооружение эльфов и Эдайн в произведениях Толкина.

...

Цели:

*Договориться о терминах при обсуждениях доспехов и оружия там, где это возможно; выполнено. *moleskin

*Отделение фактов от домыслов, дать ответы на вопросы; выполнено в рамках отведенного времени.

*Получение готовой рекомендации (часть правил по вооружению/ эстетике) для применения на играх по Толкину - только предварительный результат.

Вводная часть - познания в вооружении, которое он описывает в своих книгах, самого Дж. Р. Р. Толкина. Этимология его терминов.

Armour made by Aule (Armouries of the Gods)

Fishes's mail - early Ulmo (Blue+silver lorica squamata)/no helm/shimmering green kirtle/girt with rope of pearls; dark helm with foam crest; Thingol armoury (fish scales);

Mail (maille) - fended of whip and claw, dwarven/elven mail saved from arrows. Rarely, if ever, used surcoats. Greaves and vambraces; Brightly burnished vambrace.

“Tall helms with red plumes”, “Where still he wore his crowned helm”, “round caps of steel were covered with moleskin”/ “visors bearing each an eagle's beak”, “yellow locks beneath his cap”

Corslet-Byrnie-Hauberk-Habergeon (crystal-silver rings-mithril-triple steel)

Pale falchion (Turgon) - falqan (great sword/twibill/twybill - Robert Nares), long and terrible swords. Ringil - cold flame; numerous named swords (Glamdring, Orcrist, Sting, black swords). Egalmoth- bent/curved sword, none else of the Noldoli. Sindar swords vs orc armour. Axes. Rusting swords in Haud-ina-Nengin (Galadriel words about sheathe).

Fingolfin - lances keen, Aiglos - lance; Glaive - Bill (Gondolin), hammers, clubs. Poisoned javelin of Eol.

Bows - great bow Belthroning (black yew and bear sinew), longbow, shortbow, hollow steel mighty bow.

“Emblazoned them with devices of silver, gold and gems”. Targe (Turin). Buckler (Thingol). Shield of Tuor.

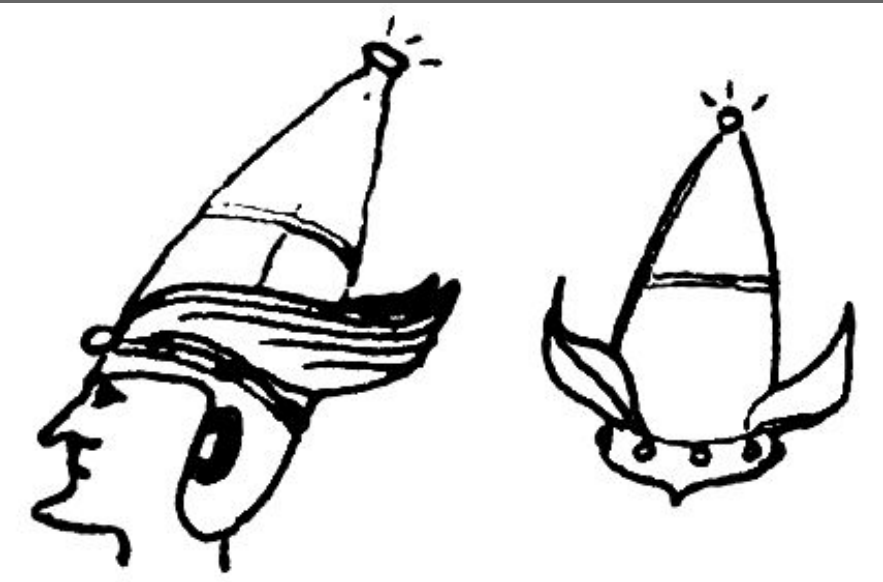
Errantry: shield and morion - coral and ivory, scabbard of chalcedony, warding runes shield (of dwarven gold), bow of dragonhorn, sword of adamant/steel/flame, helm of emerald/adamant-argent wing of swan-eagle plum, arrows of ebony.

Full harness-harnois; Panoply-pan-hopla.

Обсуждение гармоничного подхода, через эмоции и убедительность создаваемых образов:

1. На чём основано видение Толкина, и насколько надо его учитывать при полёте фантазии? То, что Толкин исправил, и то, чего не успел исправить - или и не планировал. (не было обсуждения).
2. Слабо затронутые этим исследованием варианты - ренессанс, отсутствие фиксированных форм, смешанные стили? (некоторое смешение эпох допустим, по ряду мнений).
3. Особые свойства оружия и доспехов (галворн, митриль, свойства мечей, непробиваемость; была ли гонка вооружения (возможности противников). (не успели обсудить)
4. Какой из вариантов вооружения лично вам представляется более вероятным? Аргументация, если есть (необязательно) (не успели обсудить).

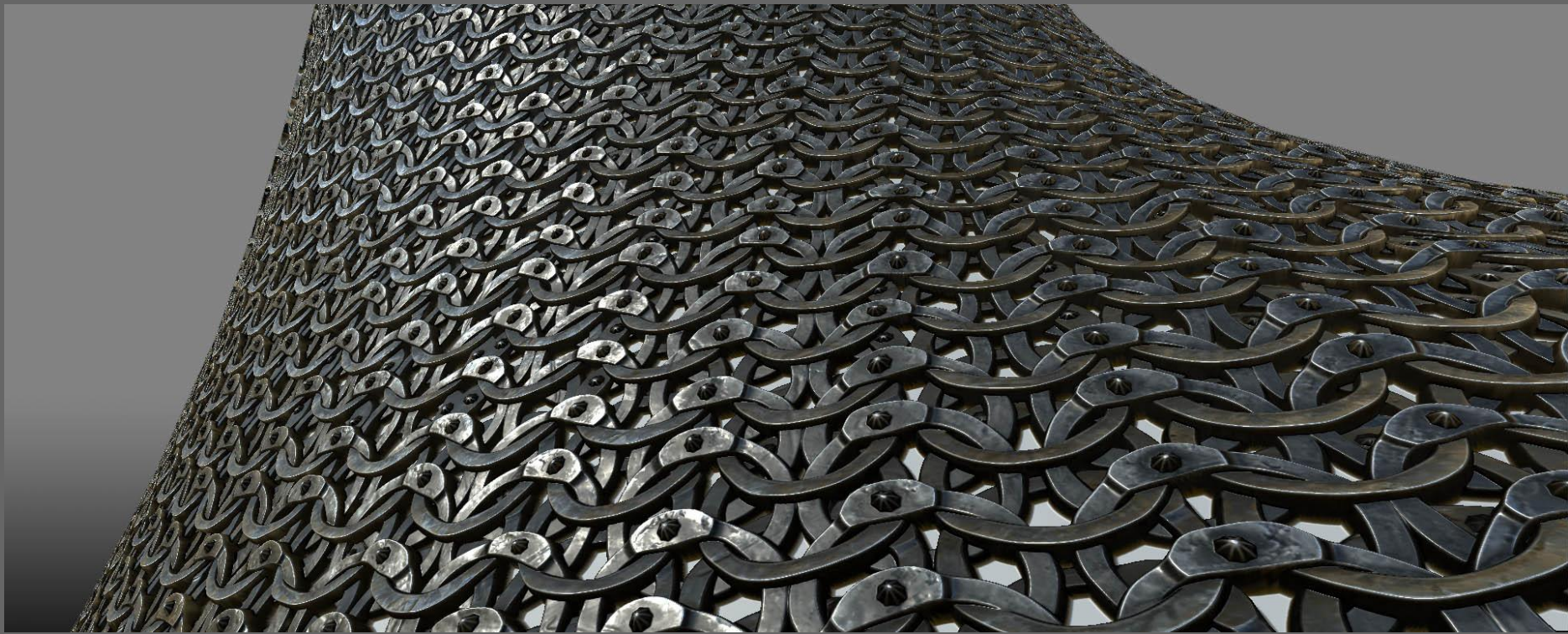
В качестве вывода: рекомендация для игр по Толкину, в качестве основного доспеха - кольчуга разного плетения (9 слайд), чешуя редко (8 слайд). Для создания эльфийских (в первую очередь, нолдор) образов и впечатлений при помощи вооружения - слайды 30 и 31. Для нуменорской культуры - 27, 28, 29. Для Рохана 25, 26 и 27. Для остальных людских культур без влияния Тьмы - ориентир на норманнское вооружение, с вариантами, 24 слайд (исключение - друздайн).













chainmailworks.livemaster.ru

chainmailworks.livemaster.ru



Copyright © 2006
Чаша
Полковник

Chausse



Above

1–4 The development of the greave.

1 Late 7th-century type coming up to just below the knee.

2 Elaborate 6th-century type covering the knee. From Olympia. Olympia Museum.

3 Simple 6th-century type. Provenance uncertain. Tower of London.

4 Front, back and side view of a late archaic greave. It was found with the helmet which is displayed on p. 62. Munich Glyptotek.













et ten fiff portez a se ames et rich



De same faumen et porucien et saint albn

THE FRENCH TWO-HANDED FALCHION

A rare and unusual falchion, a single-edged curved blade designed to cleave through unarmoured targets with impunity. Such weapons were of limited use against armour, with thin blades designed to cut with as little resistance as possible.

The long grip is bound in an azure leather, and shaped to fit comfortably in both hands, making this falchion a fearsome threat when wielded skillfully.

The hilt has a deeply blued cross, and a pommel with deep hollow inserts; one side has been filled with a gold Angel coin worth six shillings and eightpence. The other side is a brightly polished chalicedony cabochon, protecting whatever is underneath - perhaps a holy relic, like a fragment of Christ's shroud, or maybe something secular - the lock of hair of a loved one, perhaps?



No two-handed falchions survive from the medieval period, but many are shown in the manuscript depictions of the day. This example has been reconstructed from that shown in an illuminated manuscript in the Bibliotheque Nationale de France, of the Martyrdom of Saint Savinian.

It appears that falchions were often depicted in medieval art as the weapon of choice of an unbeliever or sinner - carried by the Turks, by Goliath against David, or by those soldiers inflicting martyrdom upon the Church's many saints.

While the double-edged sword was sometimes seen as a tool of God's will - "the sharp two-edged sword of the Lord" is a phrase used repeatedly among scholars like John of Salisbury, these uncommon single-edged swords do not appear have such divine approval; But if their regularity in illustration is a measure to go by, they were indeed popular among all classes of soldiers in the medieval age.





MAKER ~ TOM WARD

IMAGE ~ SHARPBYCOOP


















ARTHAMMER
LARP WORKSHOP



© Wyrmywic Productions Ltd 2014





NÚMENÓREAN ARMOUR

"ARCADIAN" PERIOD, C. S.A. 32-1000

INSPIRED BY TOLKIEN'S DESIGN
FOR LEATHER "KARMA" HELMET



<http://legvma.ru/>

NÚMENÓREAN ARMOUR

"IMPERIAL ERA," C. S.A. 2900-3319





ახს

<http://elbenstern.wordpress.com>



ECTHELION



Tabiana Shumilina



THE SILMARILLION

THE FALL OF GONDOLIN

