



B A A M

LEVEL ONE



BAAM!

RULES

- 1. Decide which team goes first.**
- 2. Appoint a scorekeeper.**
- 3. Teams answer correctly and earn money.
If a team is correct, they can continue
until max. 3 times or until they get BAAM!**
- 4. If a team hits BAAM! they go bankrupt!**
- 5. The team with the most money at the end
is the winner.**

1

2

3

4

5

6

7

8

9

10

11

12

13

14

15

16

17

18

19

20

21

22

23

24

25

FAANTASTIC
WHERE TO
& FIND THEM
2016



Carrots

\$100



Say 'goodbye' to
your money!





Juice

\$500





**You are
broke!**





Lizard

\$150





13

\$500





**Where's your
money gone?**

DEATHS





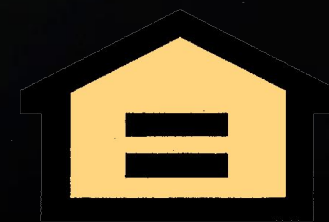
Unlucky!





Cheese

\$100





Oh
dear!





Ruler

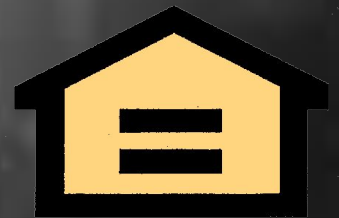
\$300





**The cat is under
the desk.**

\$800



WHERE IS POKEMON?



Pokemon is on the desk.

\$600





Oops!





**The books are
in the box.**

\$800



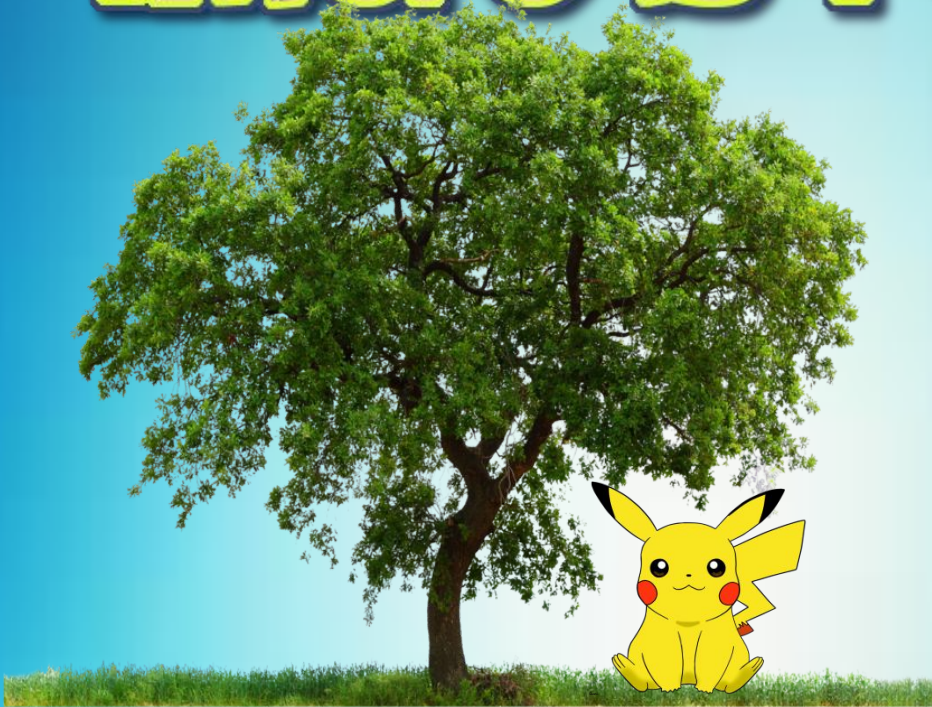


Peas

\$800



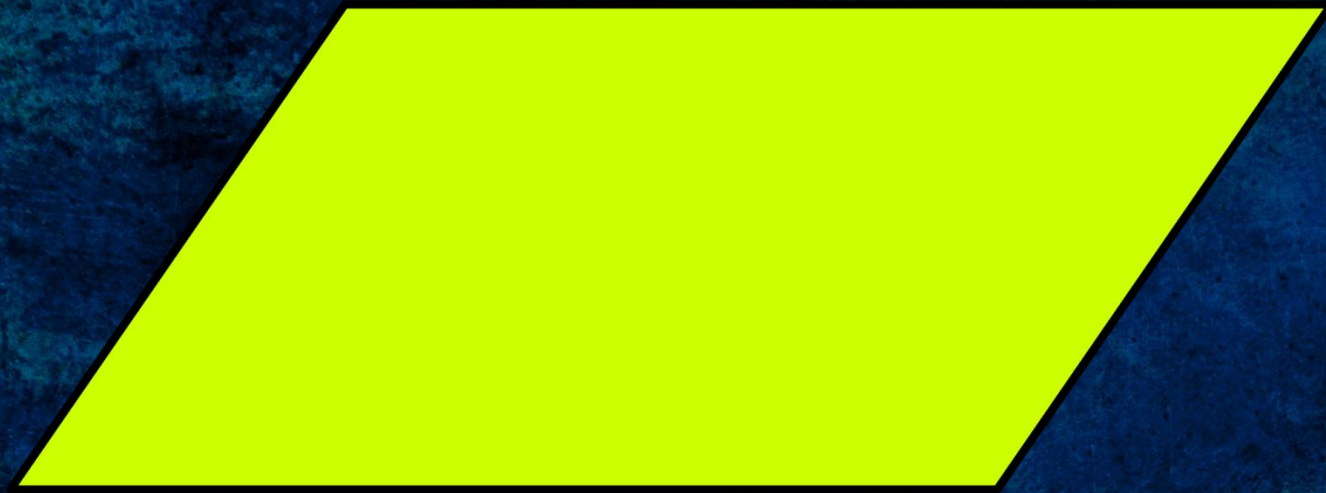
Where is Pokemon?



Pokemon is under the tree

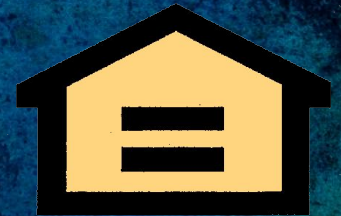
\$400





Parallelogram

\$1000





Rectangle

\$1000

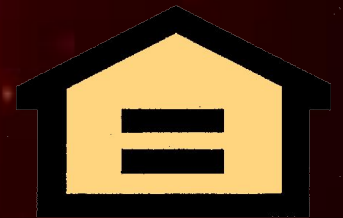


What shape is this?



Square

\$100





Circle

\$1000



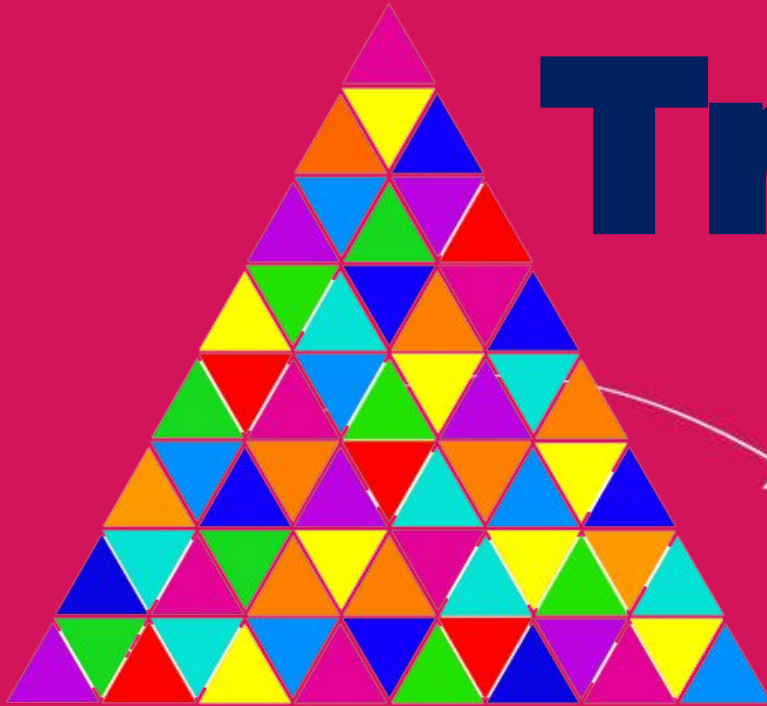


Chicken

\$500



What shape is this?



Triangle

\$700





**You lost
everything!**





The frog is on the car

\$800



