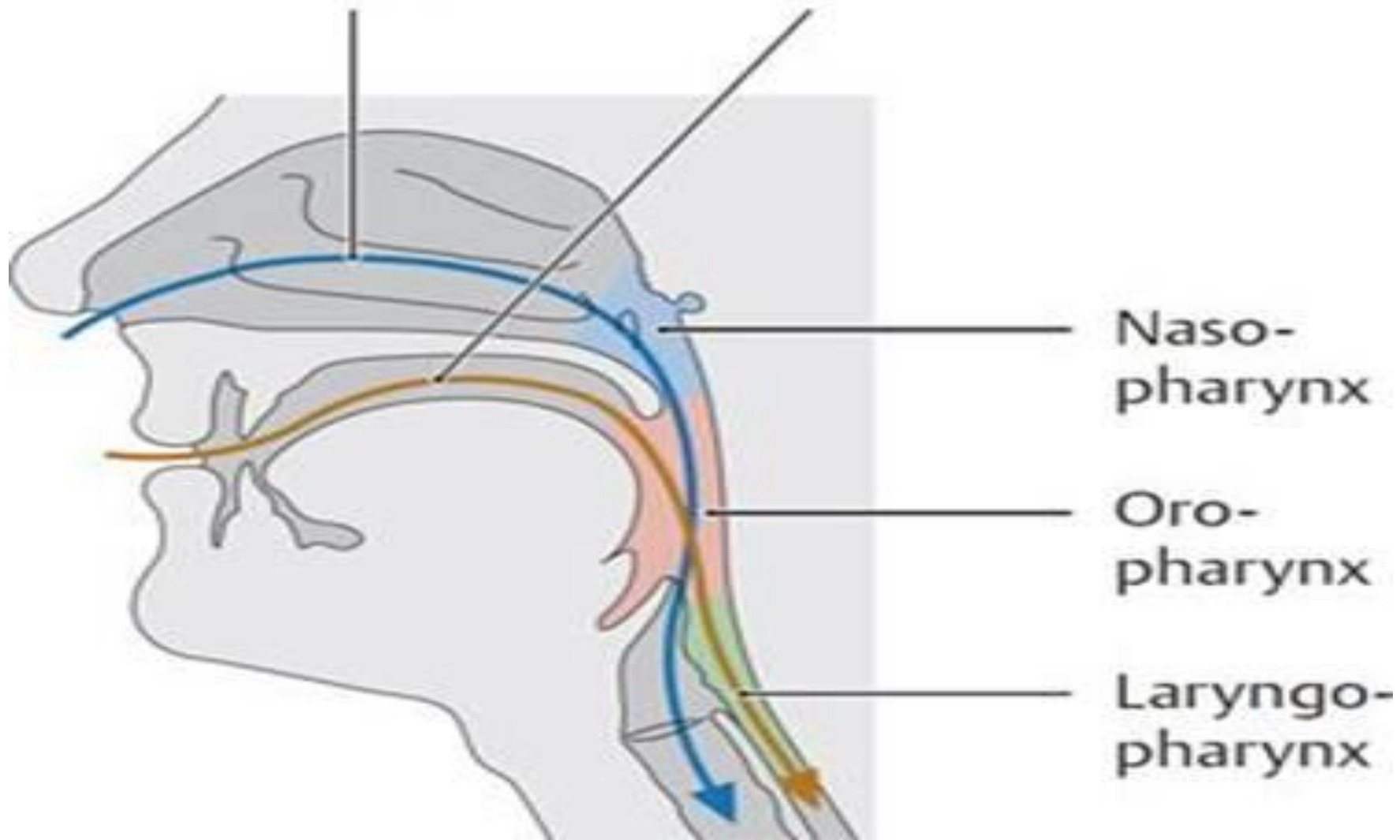
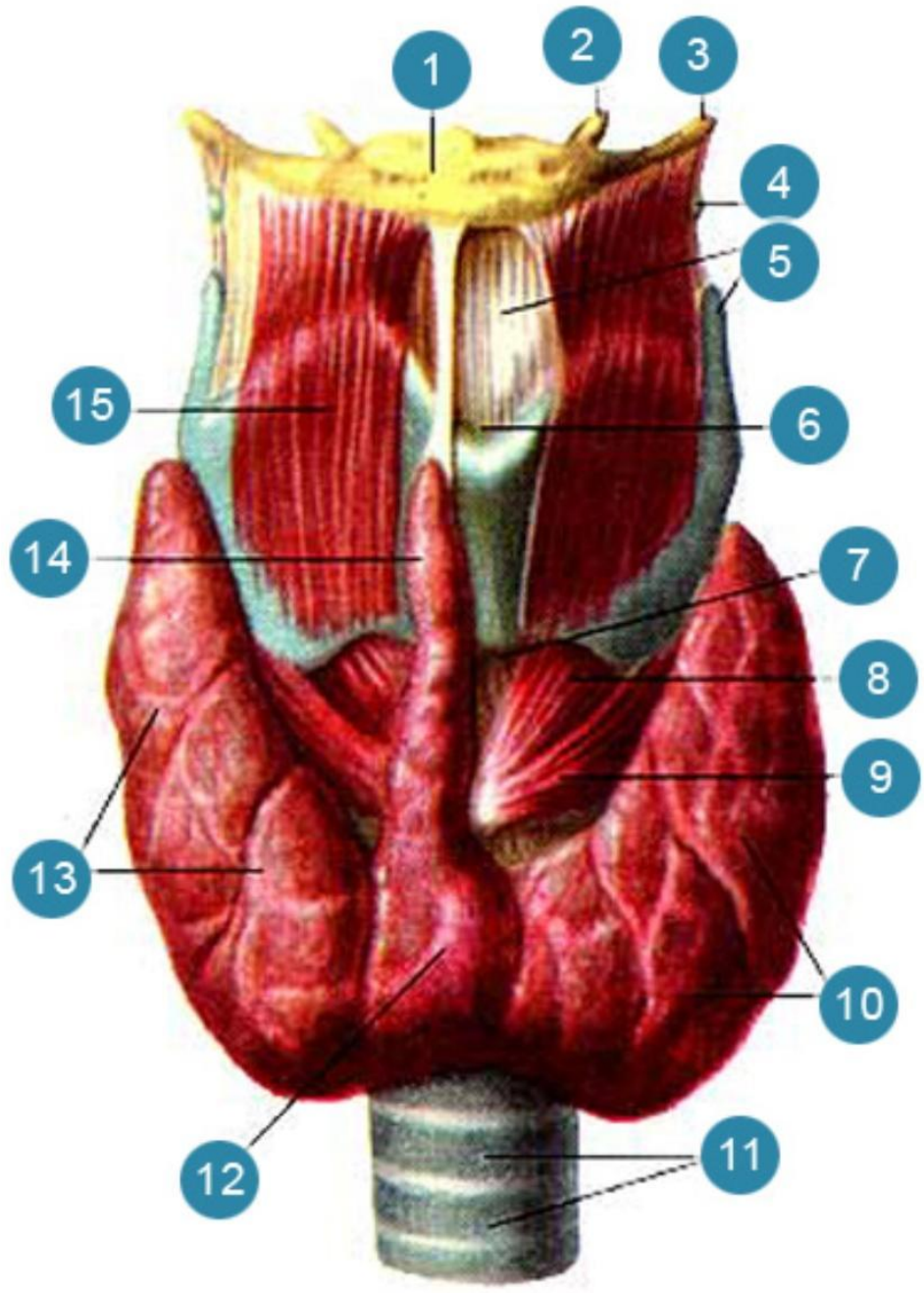
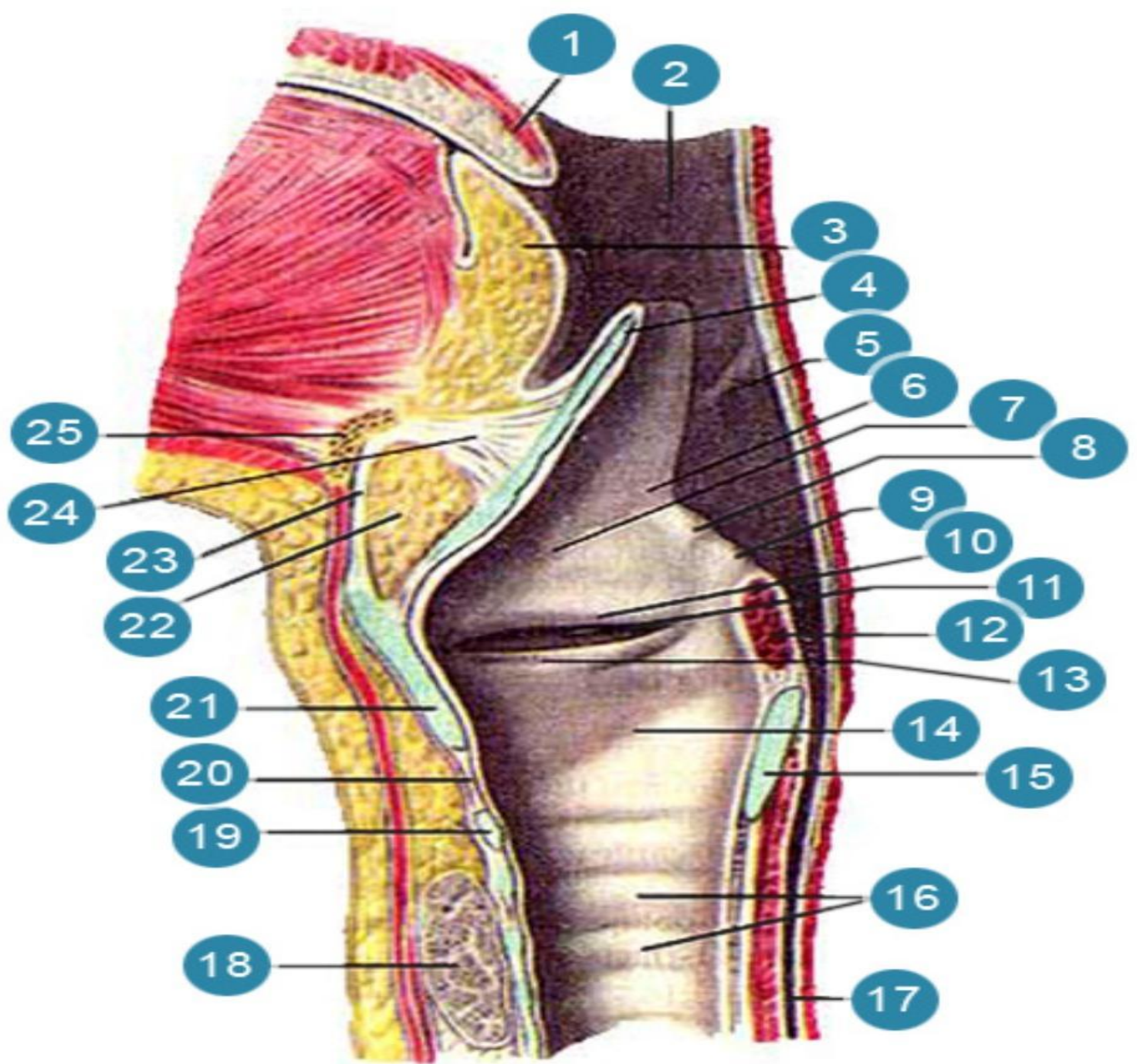


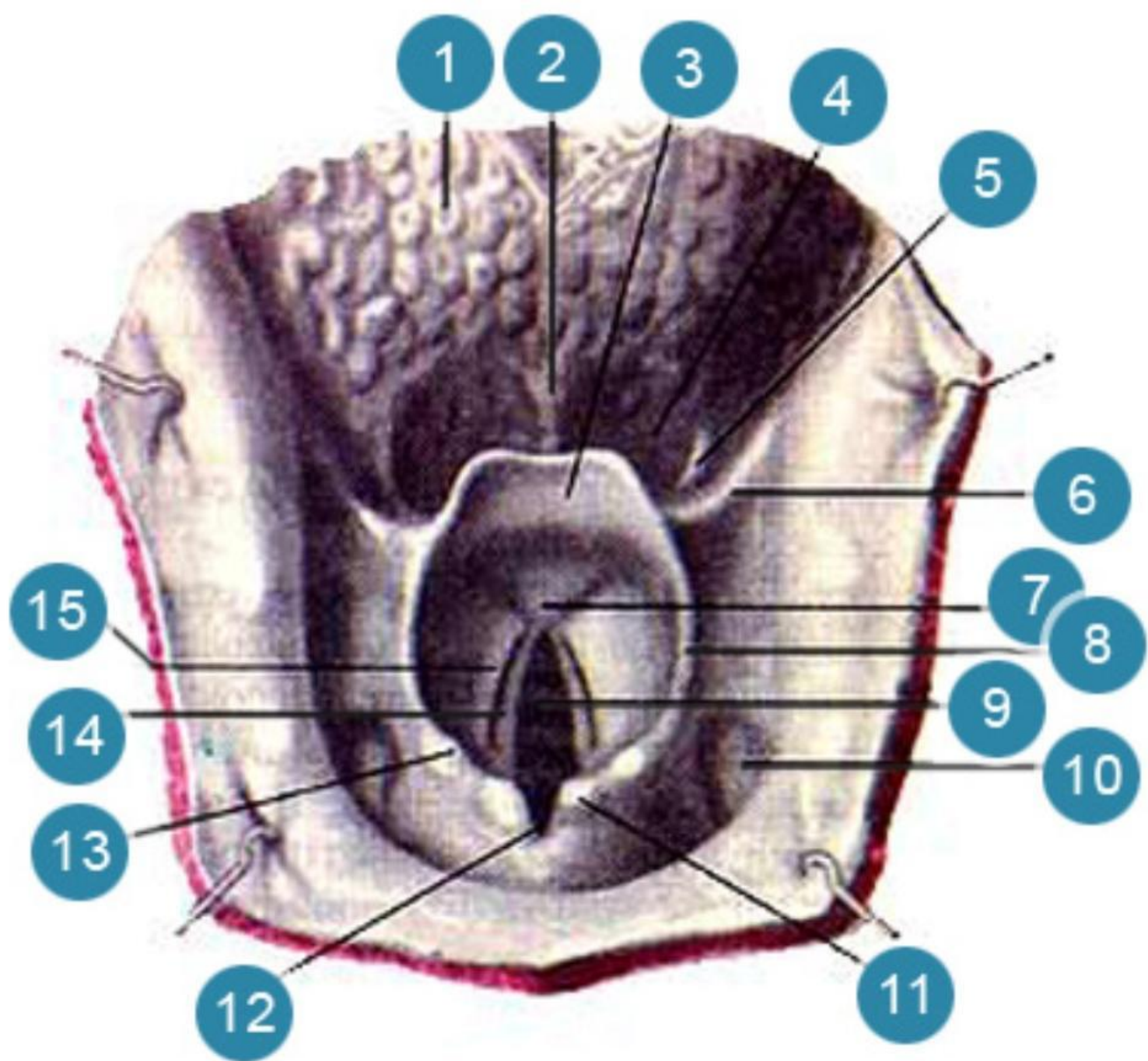
Airway

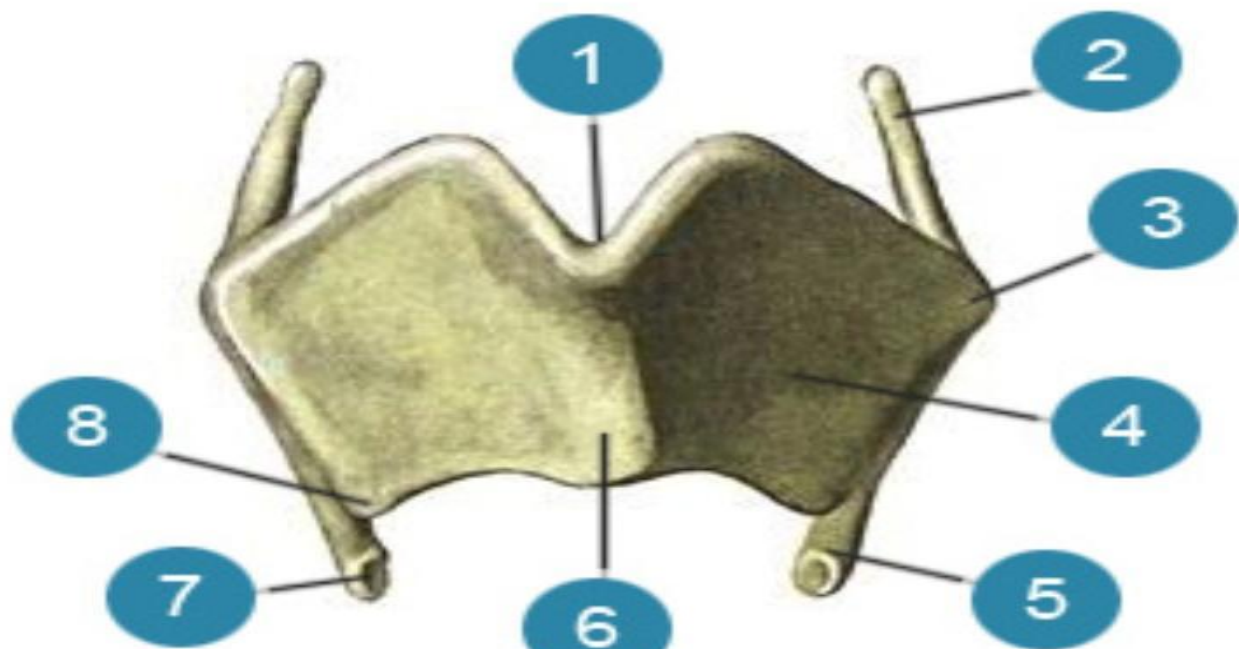
Foodway



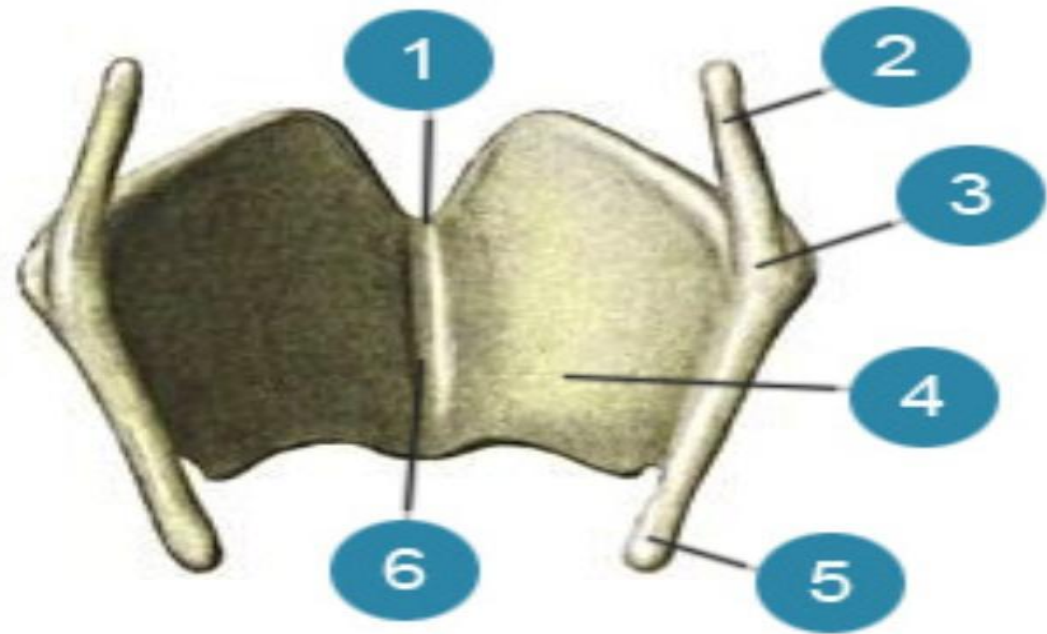




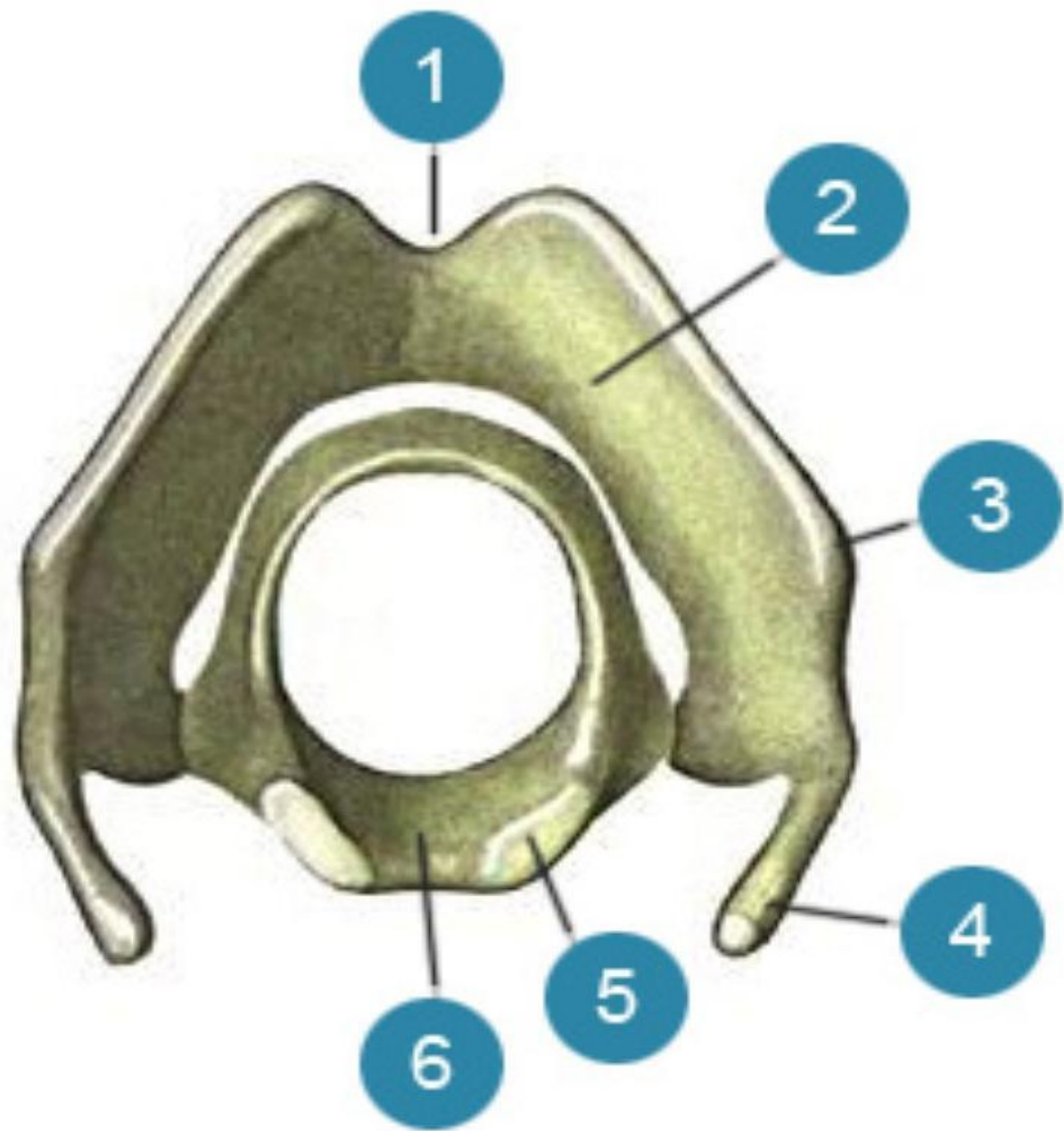


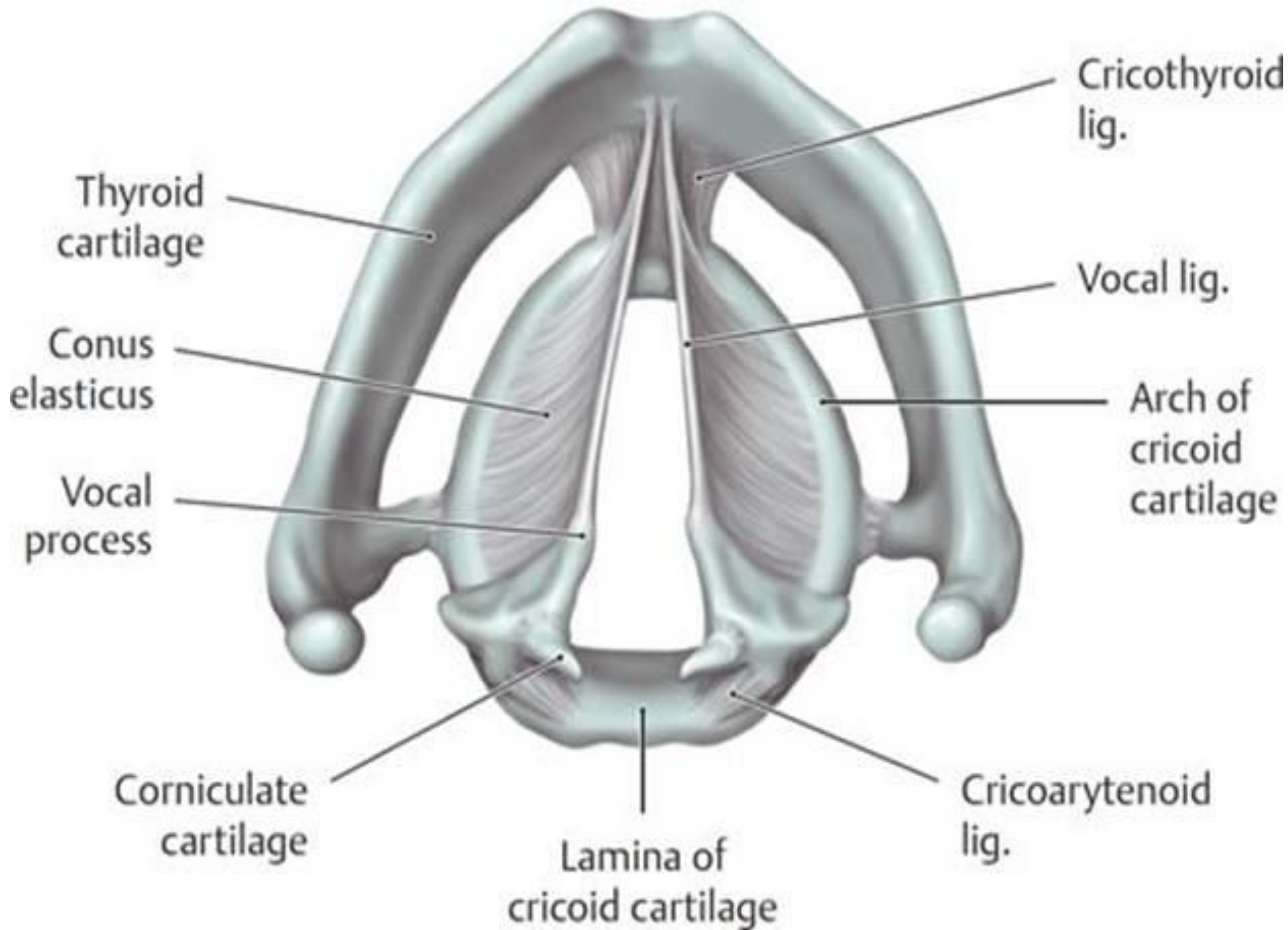


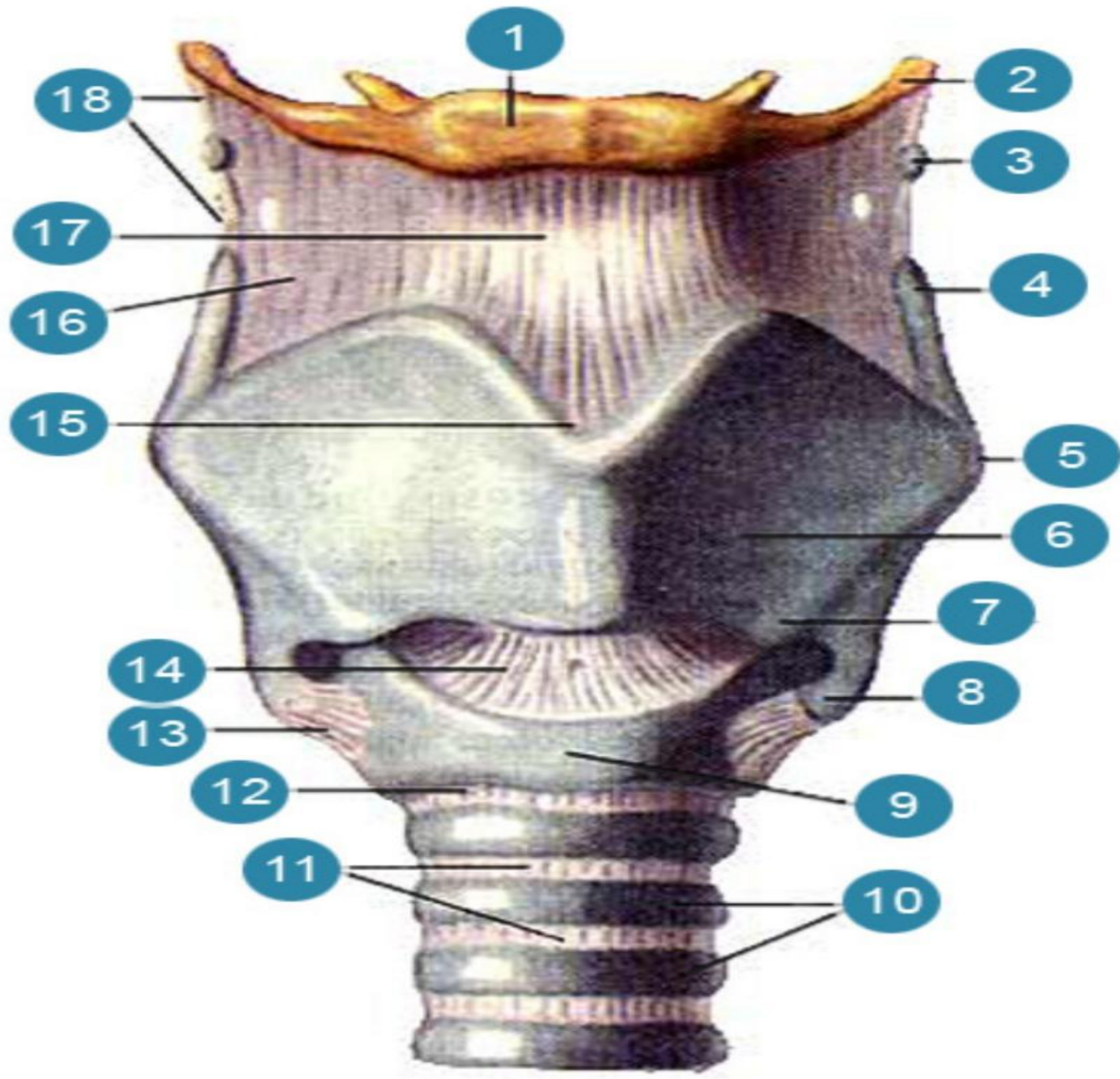
A

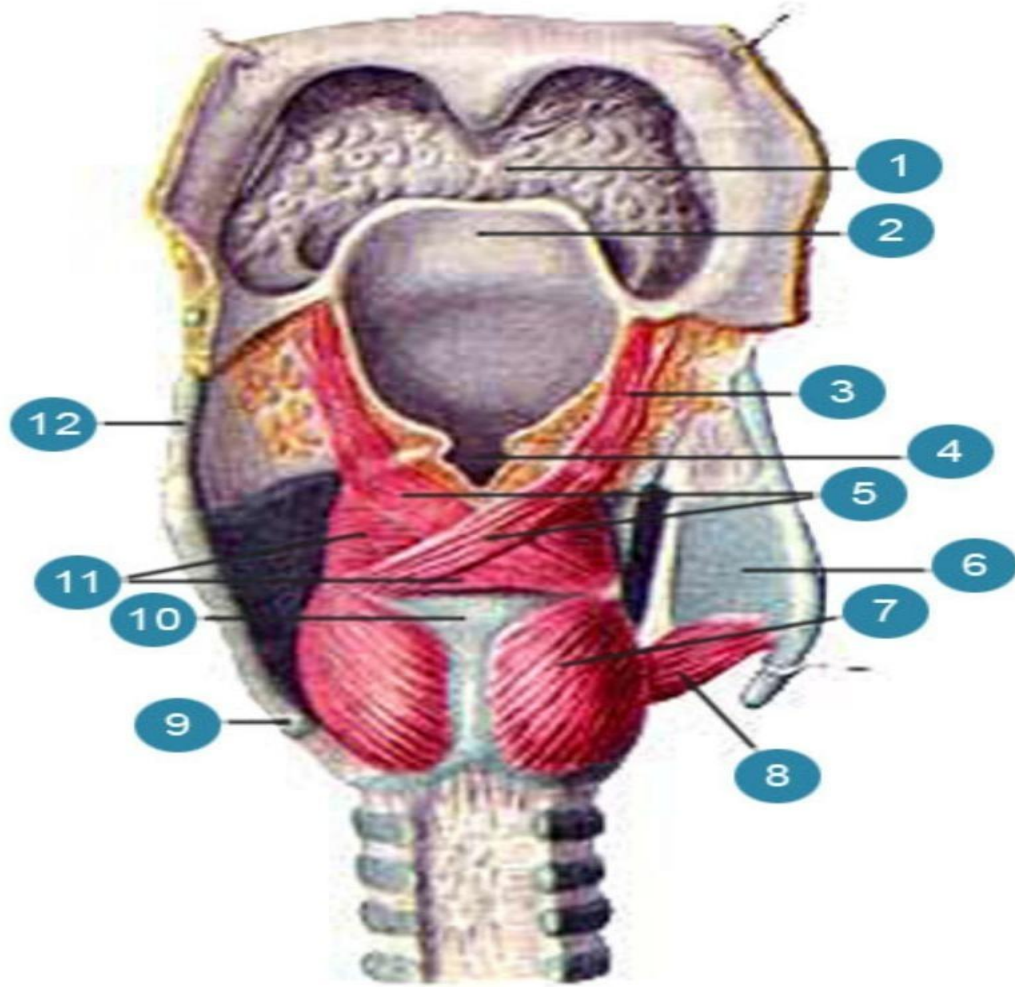


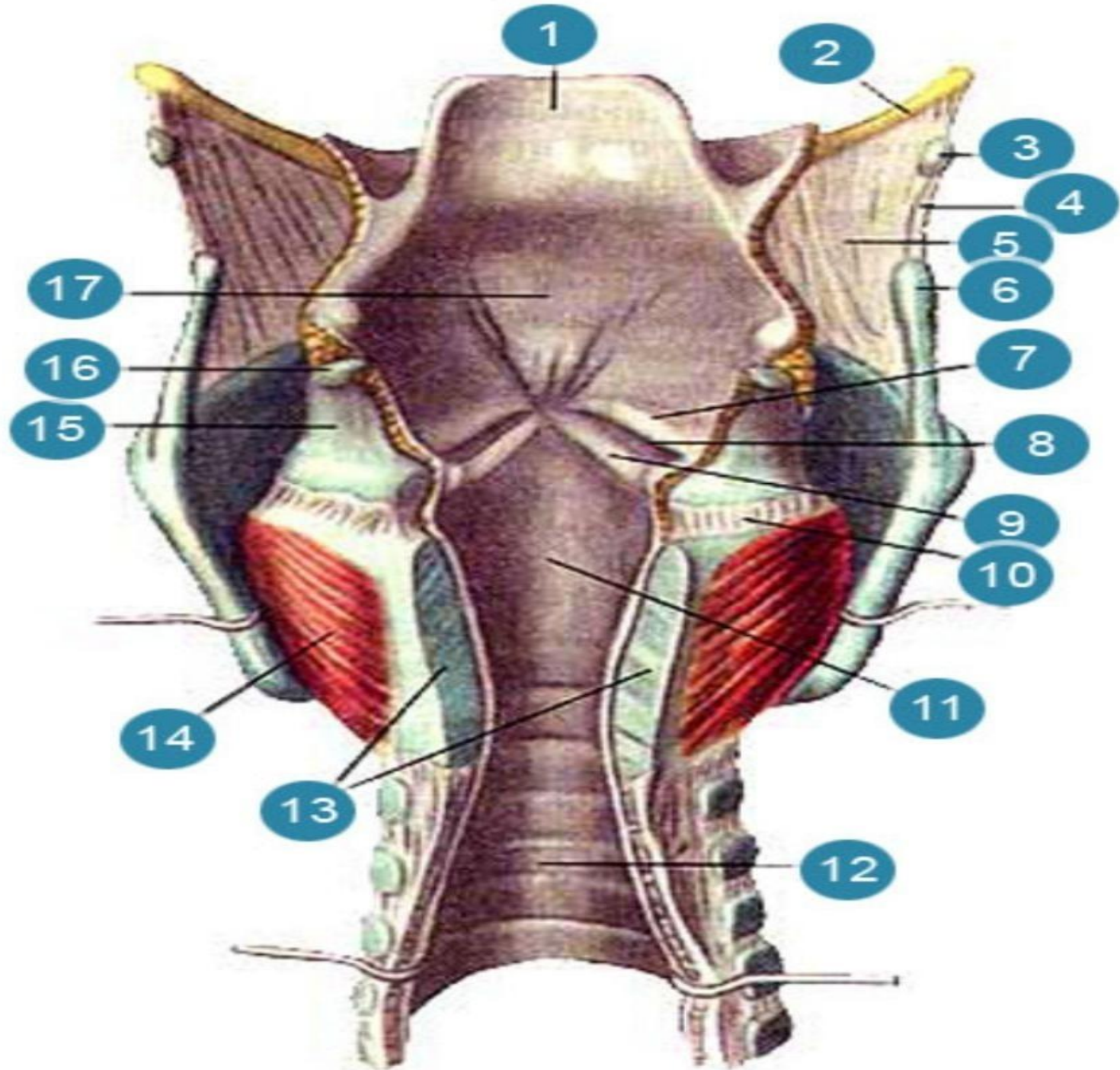
Б

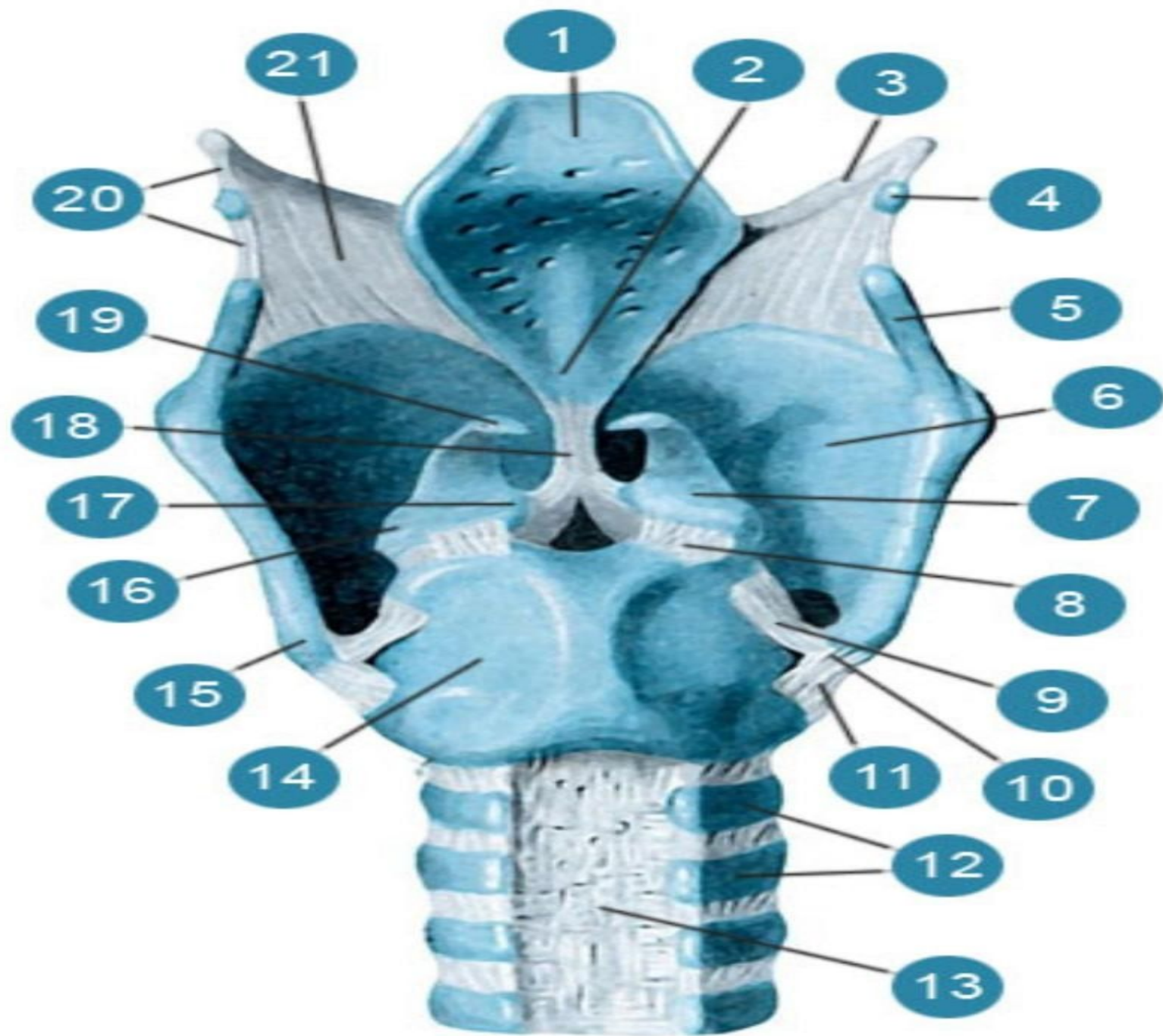












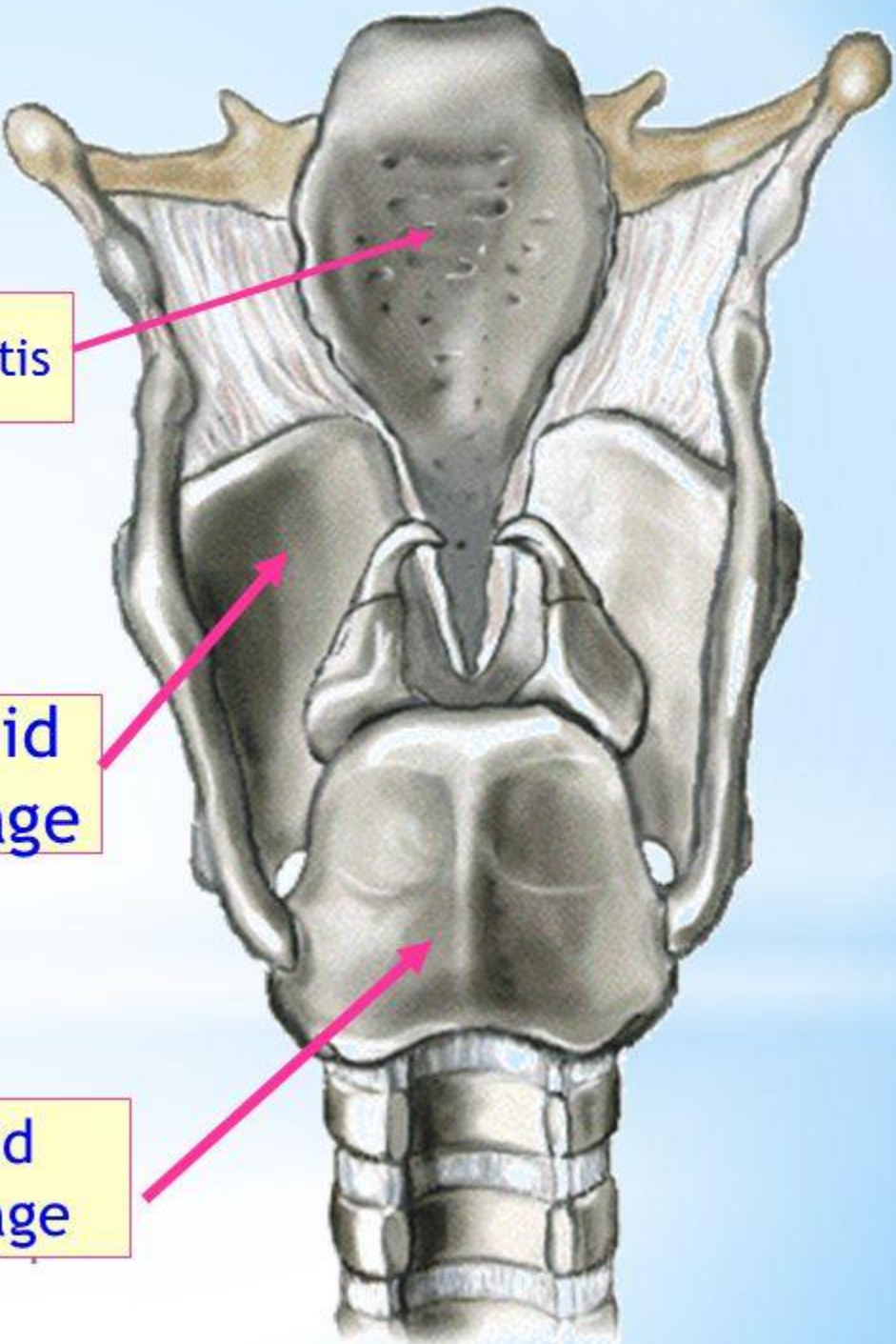


Hyoid

Epiglottis

Thyroid cartilage

Cricoid cartilage

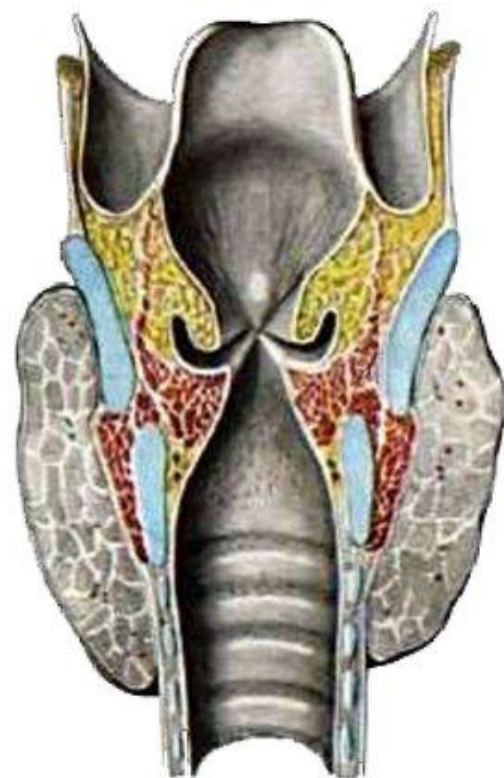


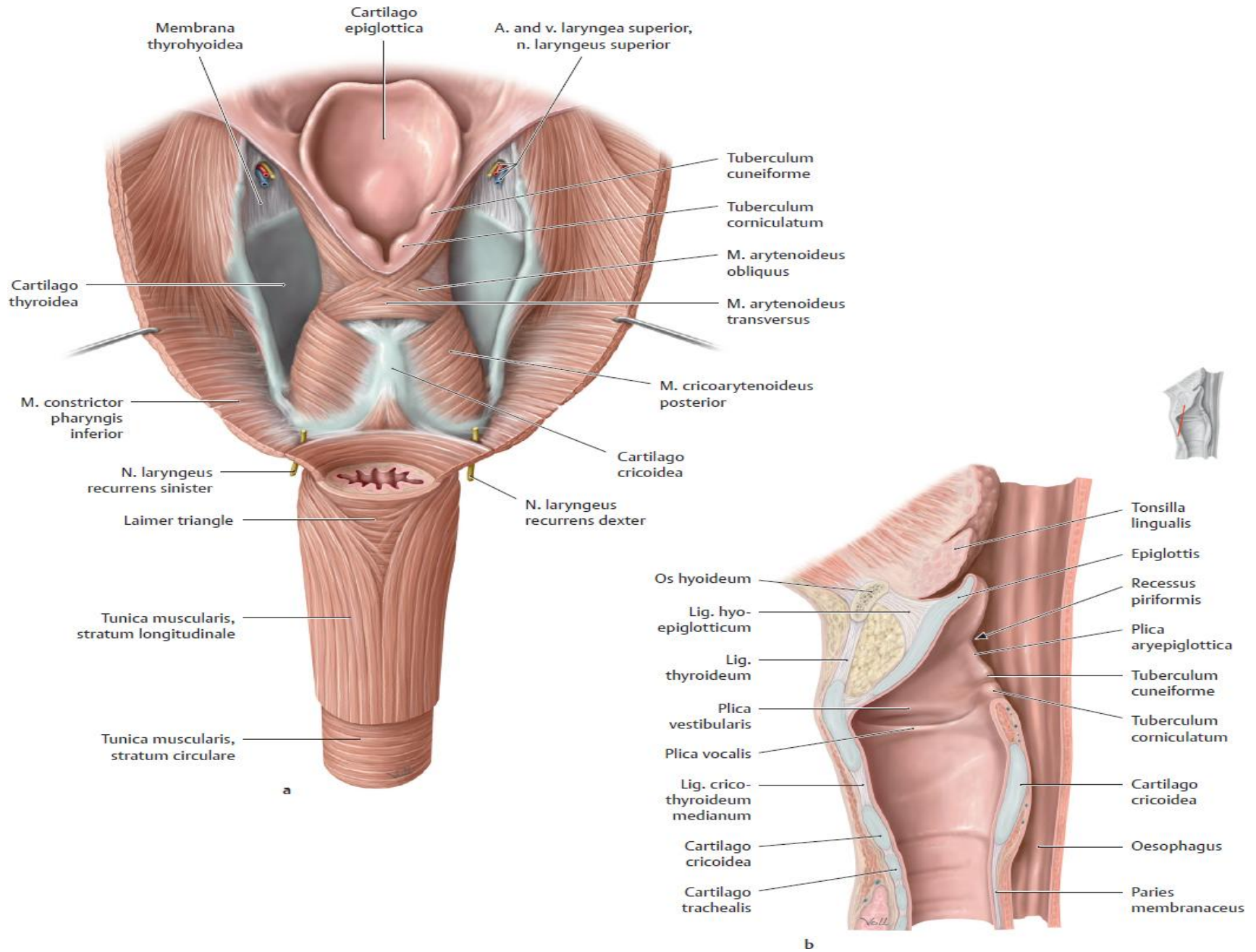
Epiglottis

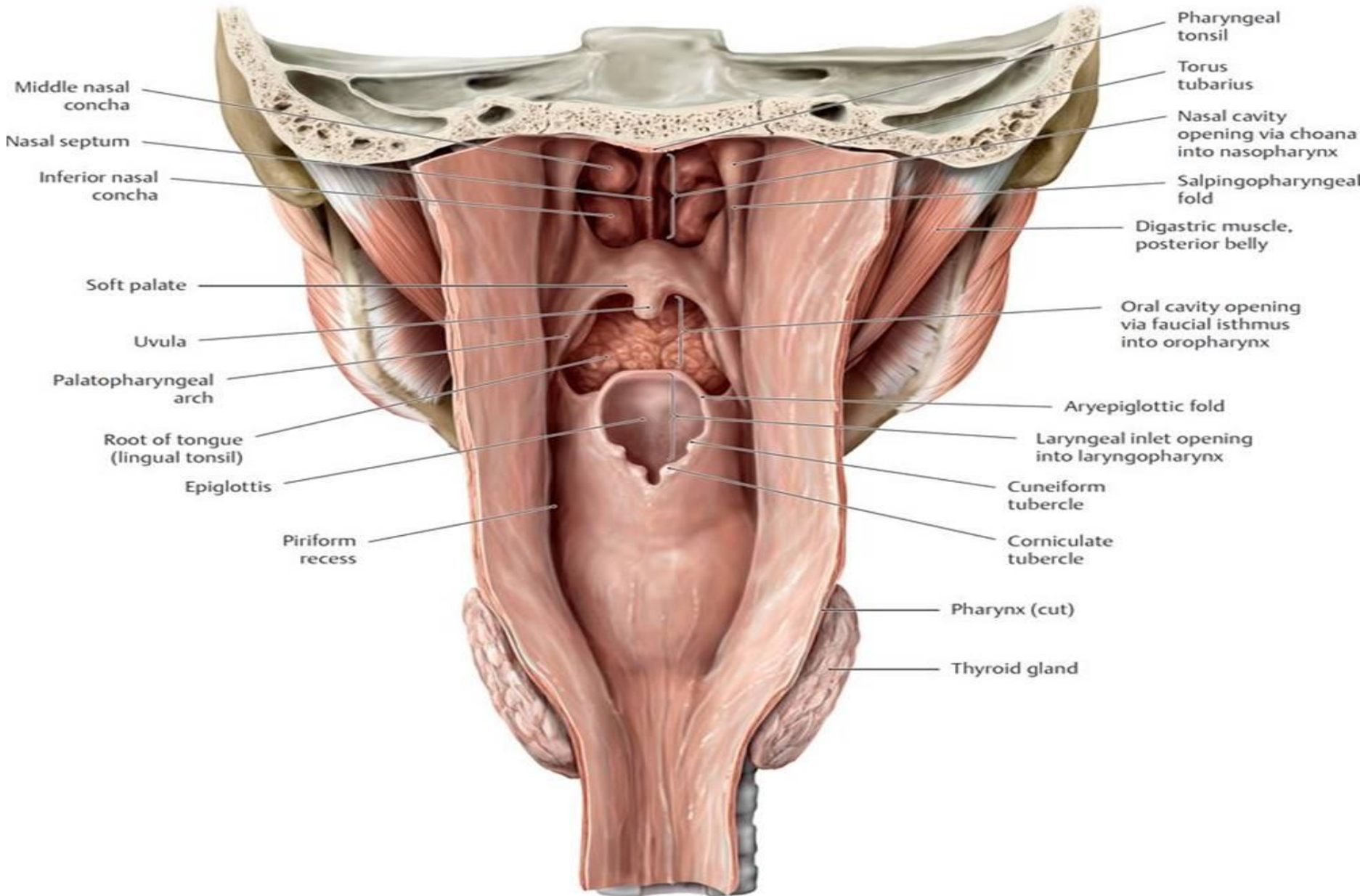
Thyroid cartilage

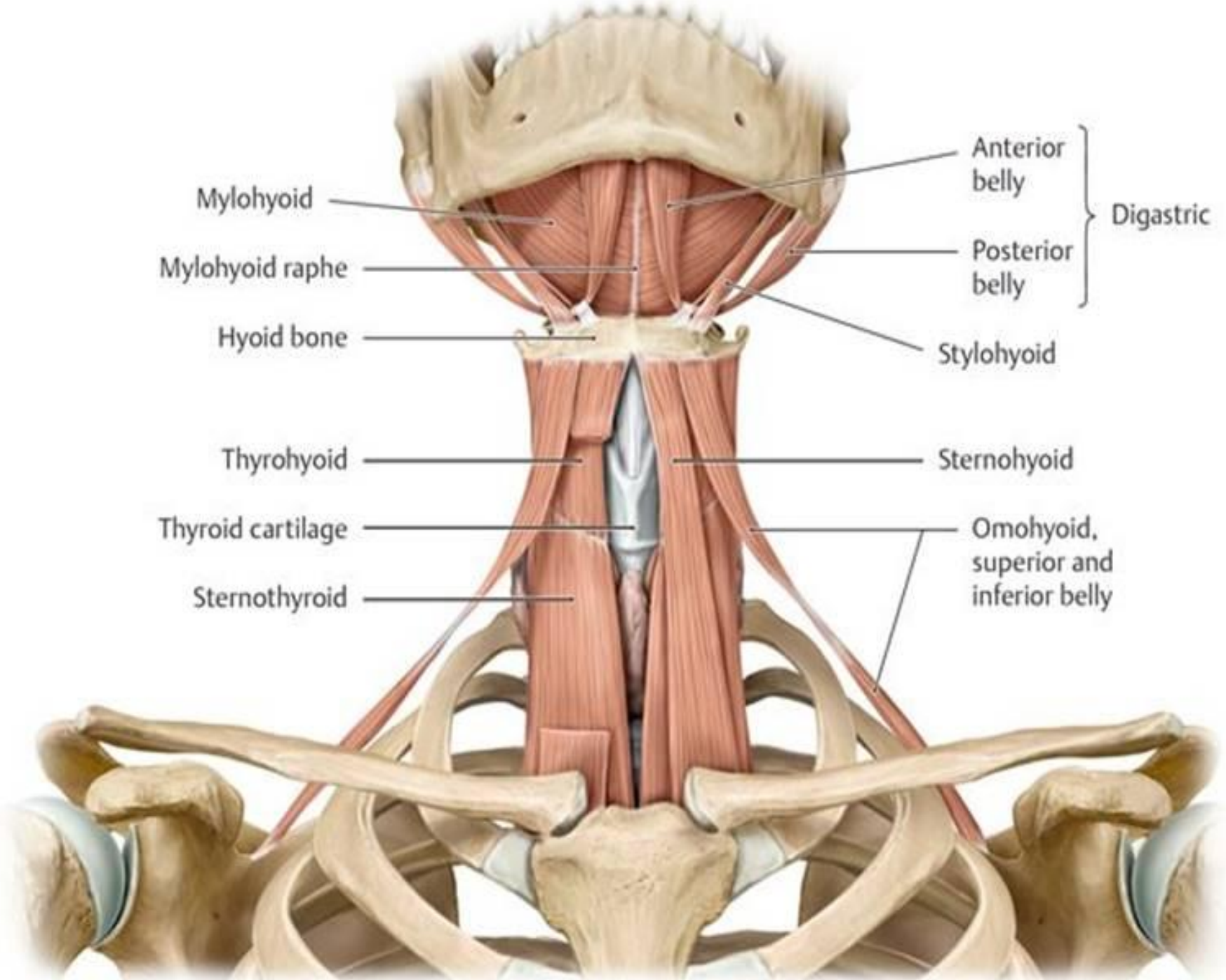
Cricoid cartilage

Гортань

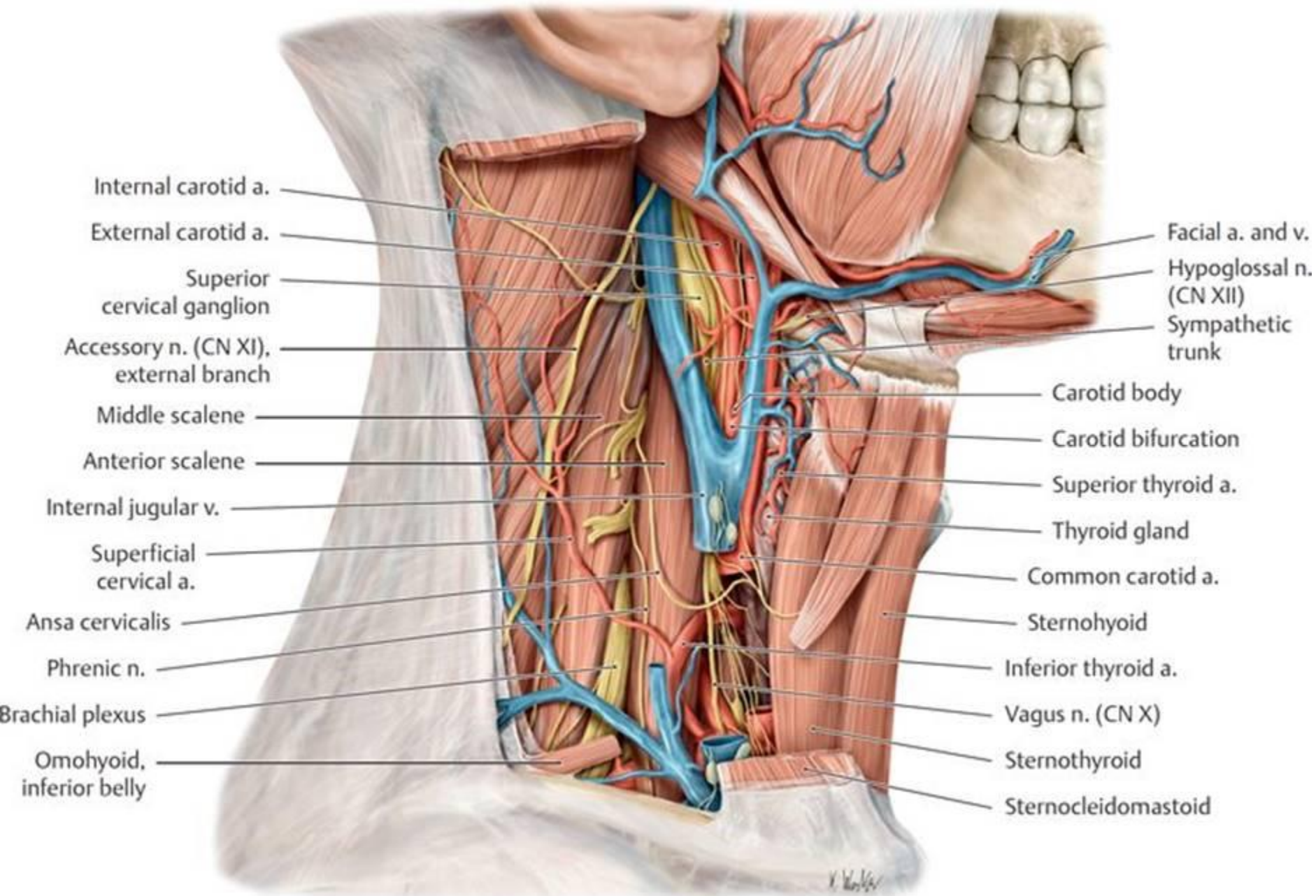








- Mylohyoid
 - Mylohyoid raphe
 - Hyoid bone
 - Thyrohyoid
 - Thyroid cartilage
 - Sternothyroid
 - Anterior belly
 - Posterior belly
 - Stylohyoid
 - Sternohyoid
 - Omohyoid, superior and inferior belly
- Digastric



Internal carotid a.

External carotid a.

Superior cervical ganglion

Accessory n. (CN XI), external branch

Middle scalene

Anterior scalene

Internal jugular v.

Superficial cervical a.

Ansa cervicalis

Phrenic n.

Brachial plexus

Omohyoid, inferior belly

Facial a. and v.

Hypoglossal n. (CN XII)

Sympathetic trunk

Carotid body

Carotid bifurcation

Superior thyroid a.

Thyroid gland

Common carotid a.

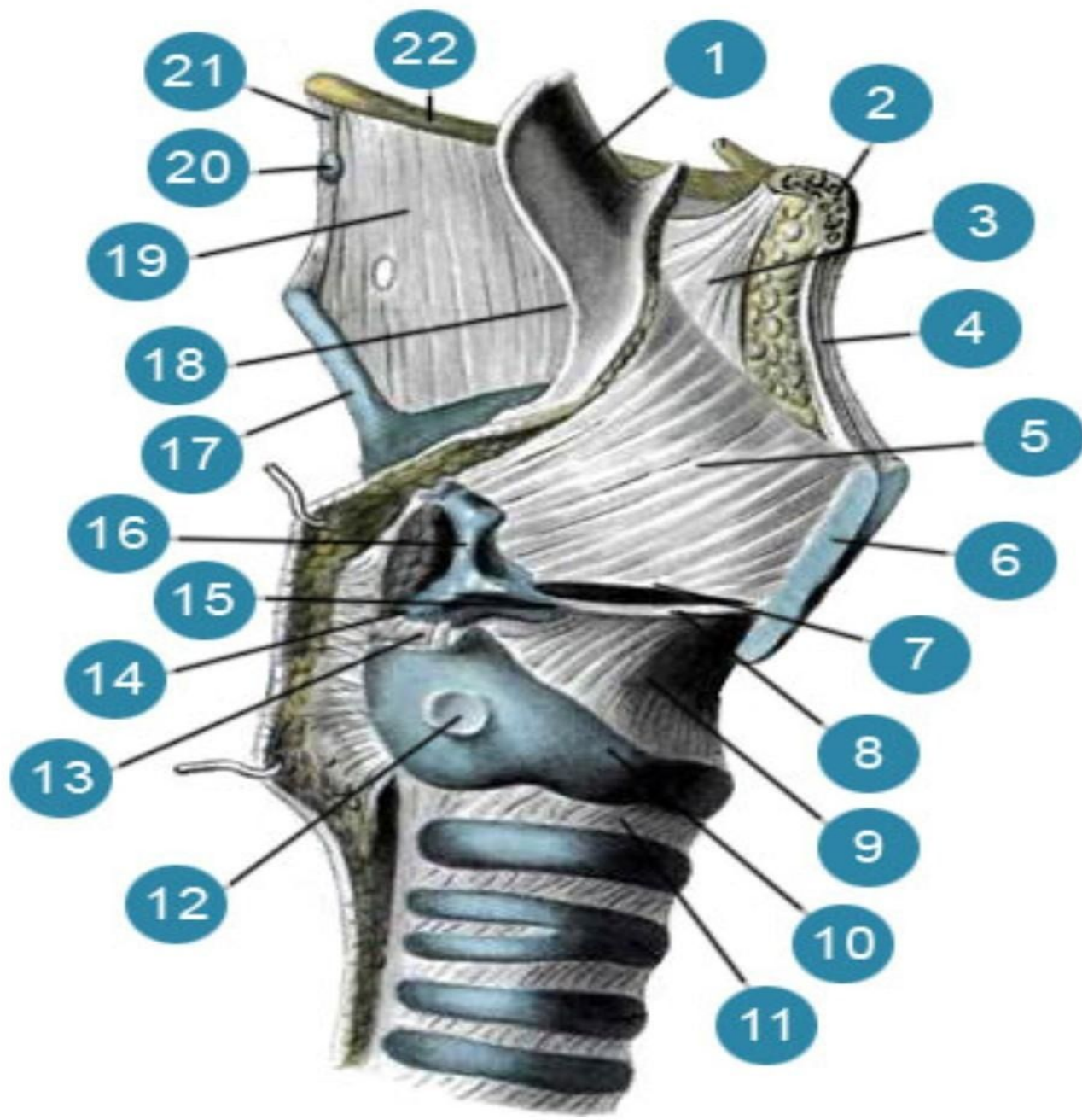
Sternohyoid

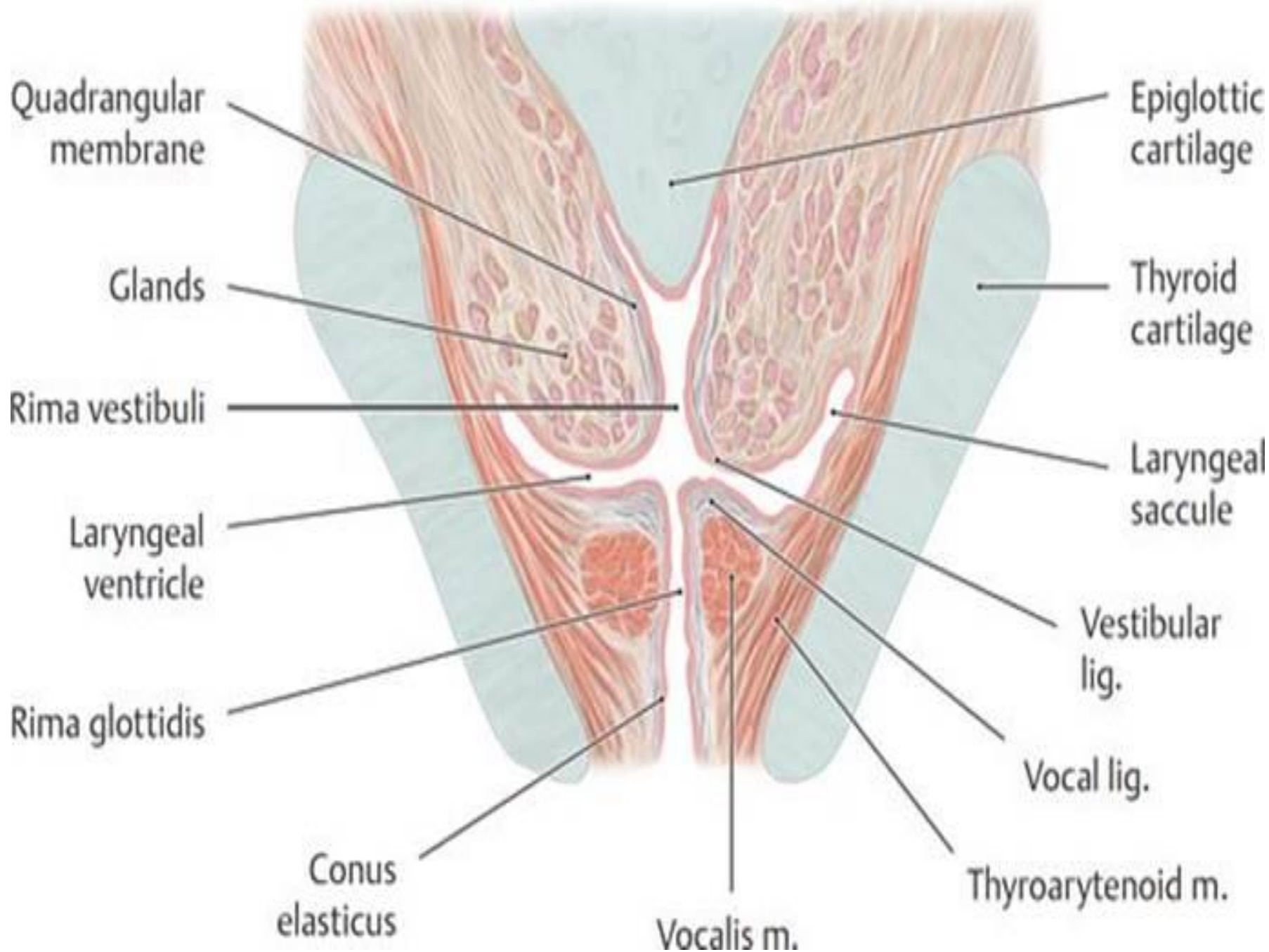
Inferior thyroid a.

Vagus n. (CN X)

Sternothyroid

Sternocleidomastoid

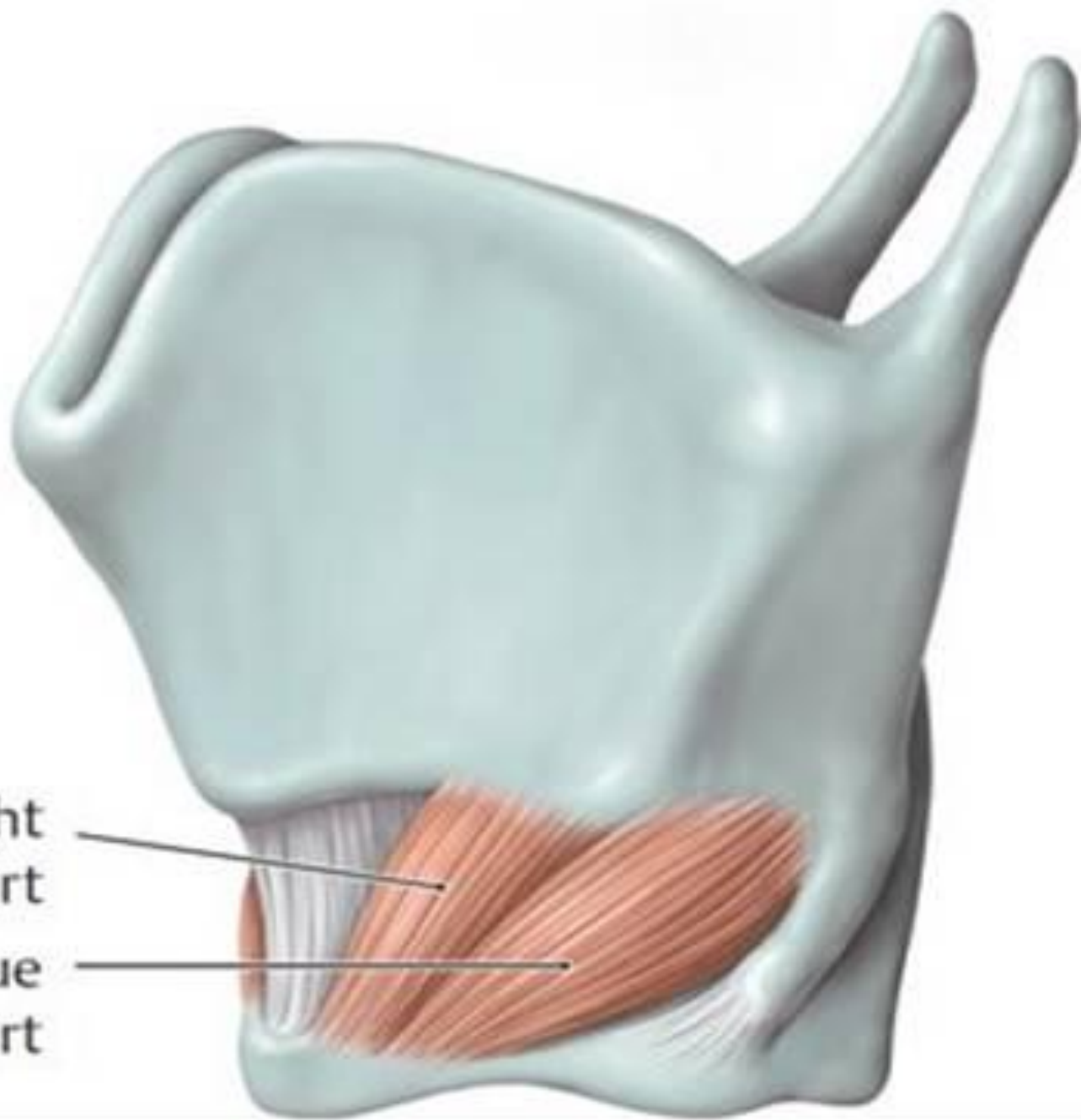




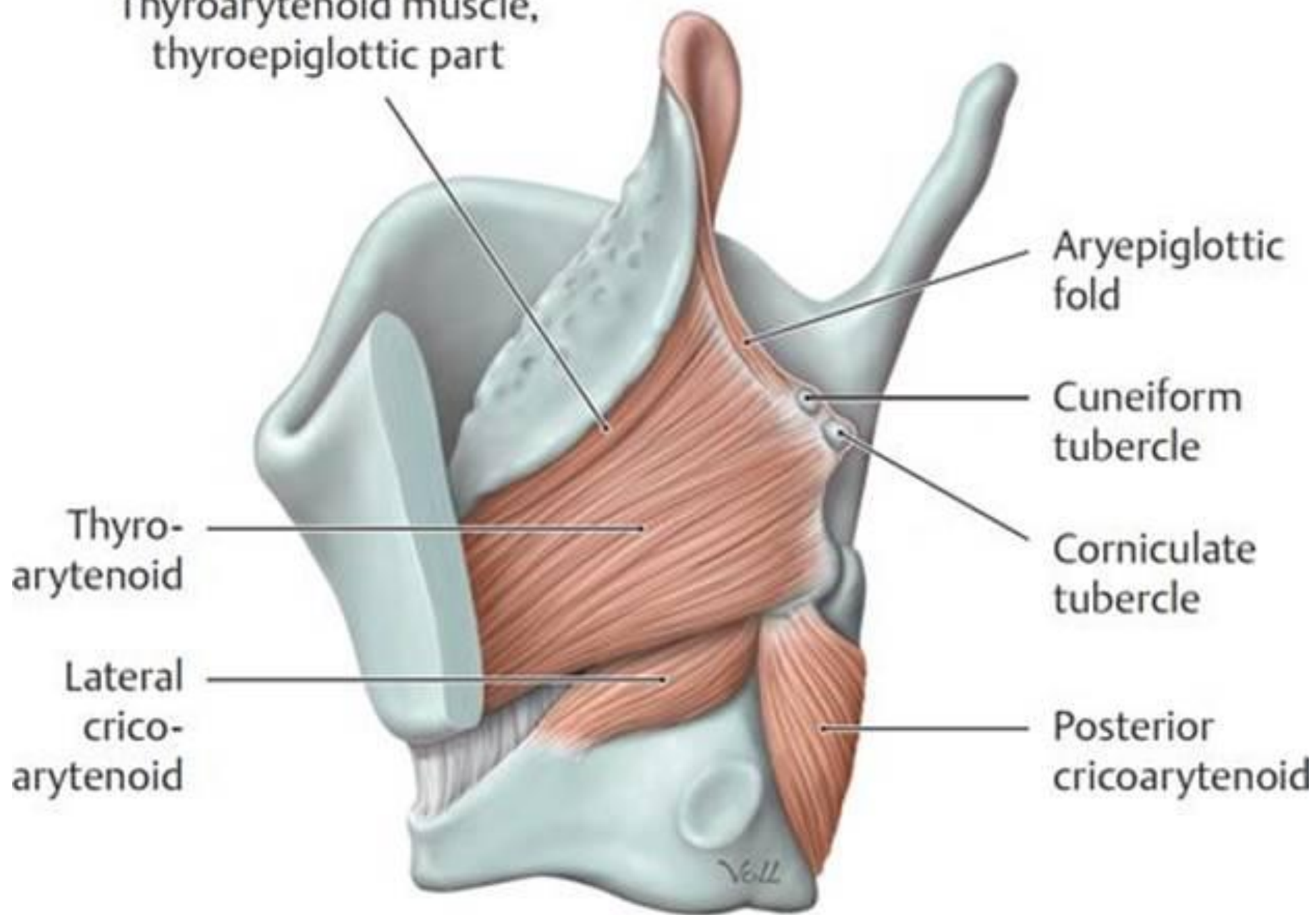
Crico-
thyroid

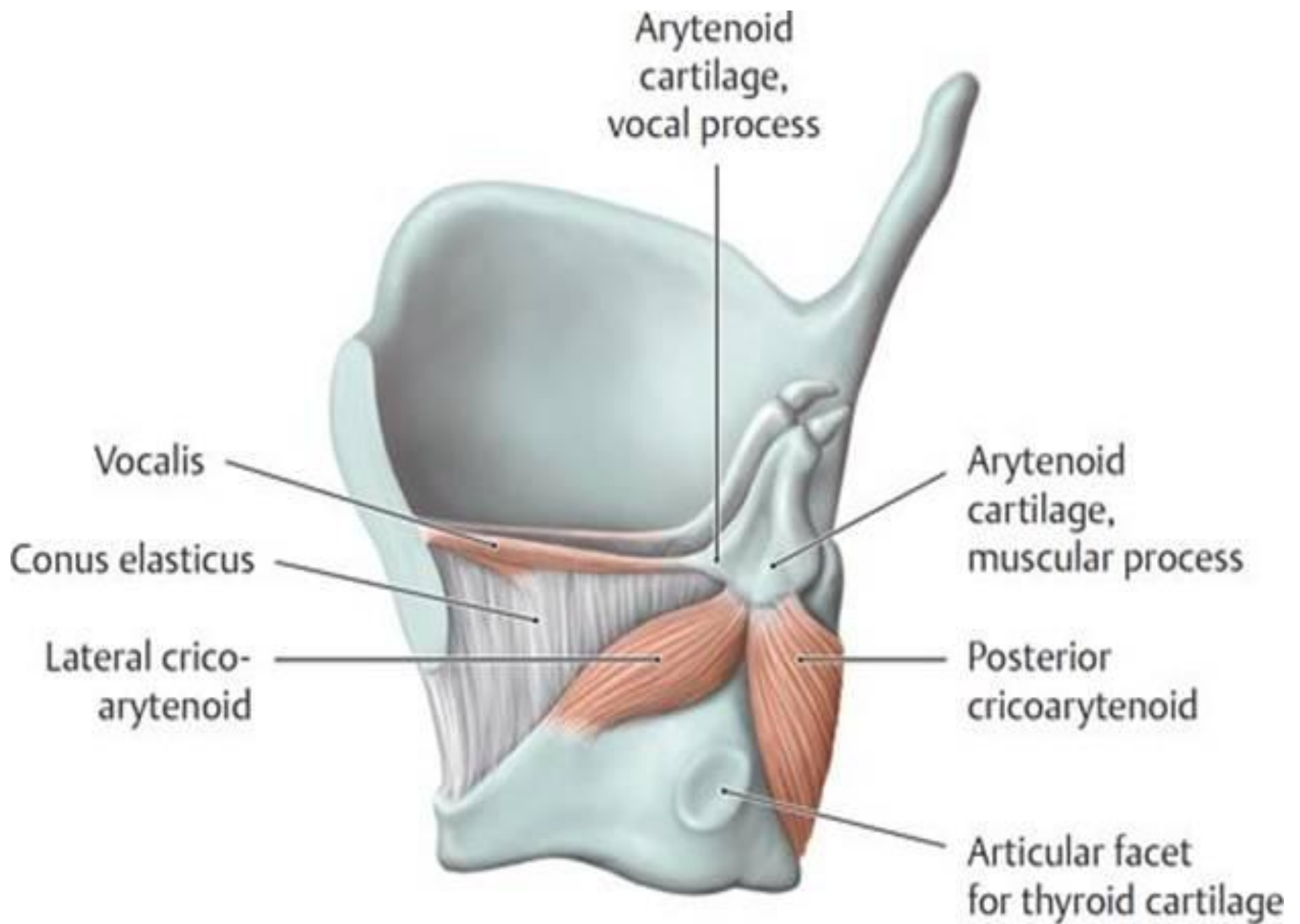
Straight
part

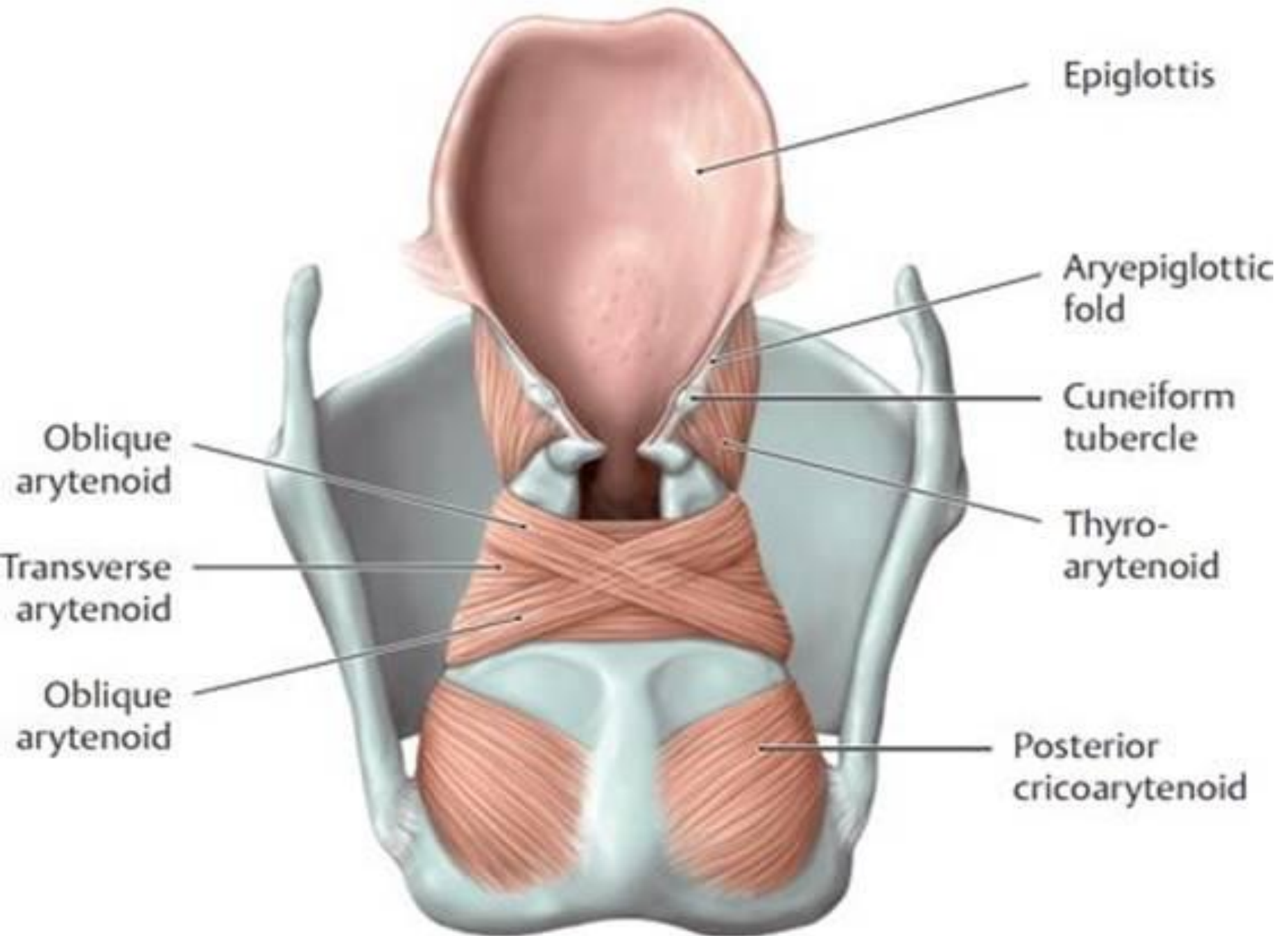
Oblique
part



Thyroarytenoid muscle,
thyroepiglottic part







Epiglottis

Aryepiglottic fold

Cuneiform tubercle

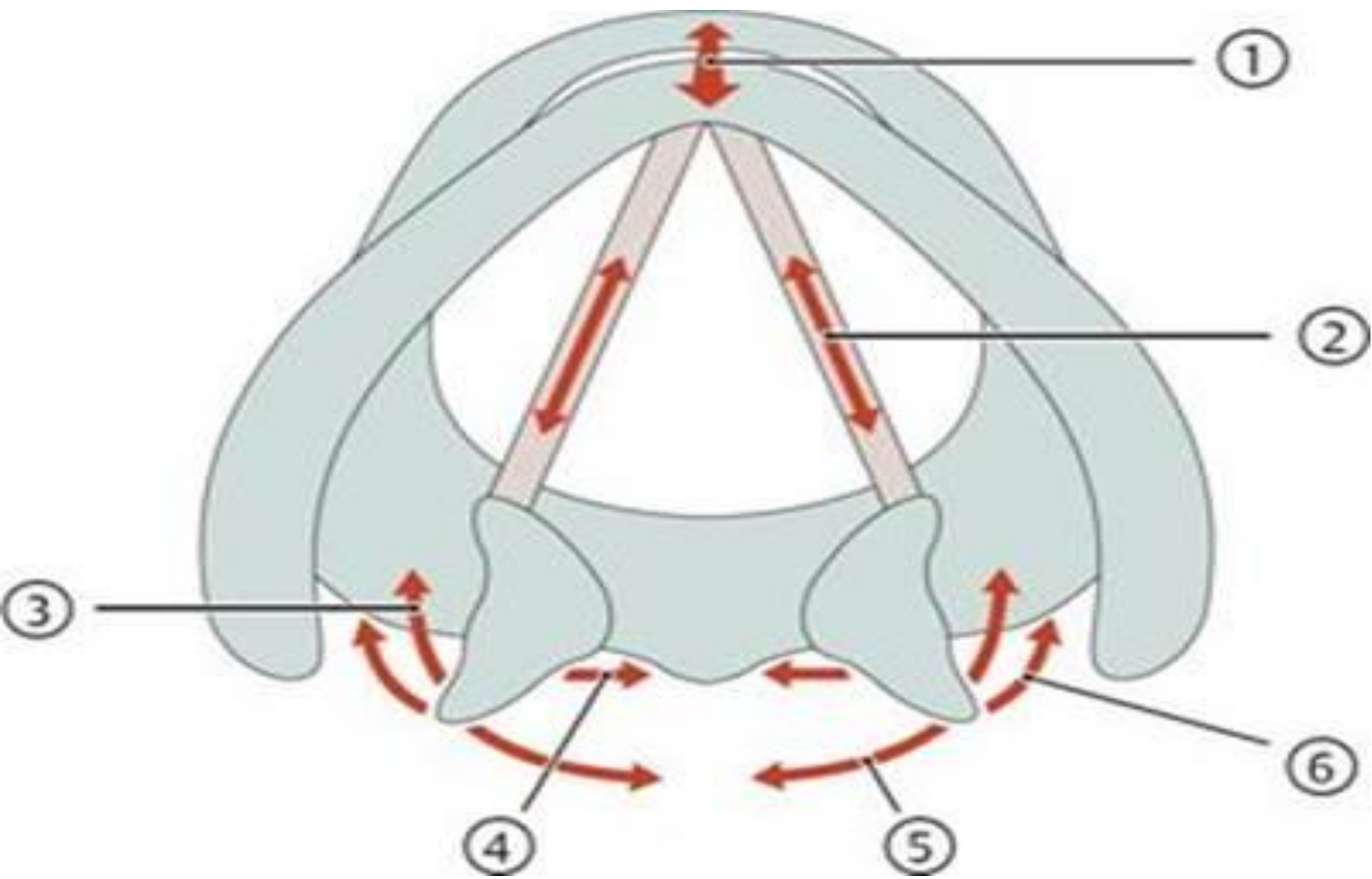
Thyroarytenoid

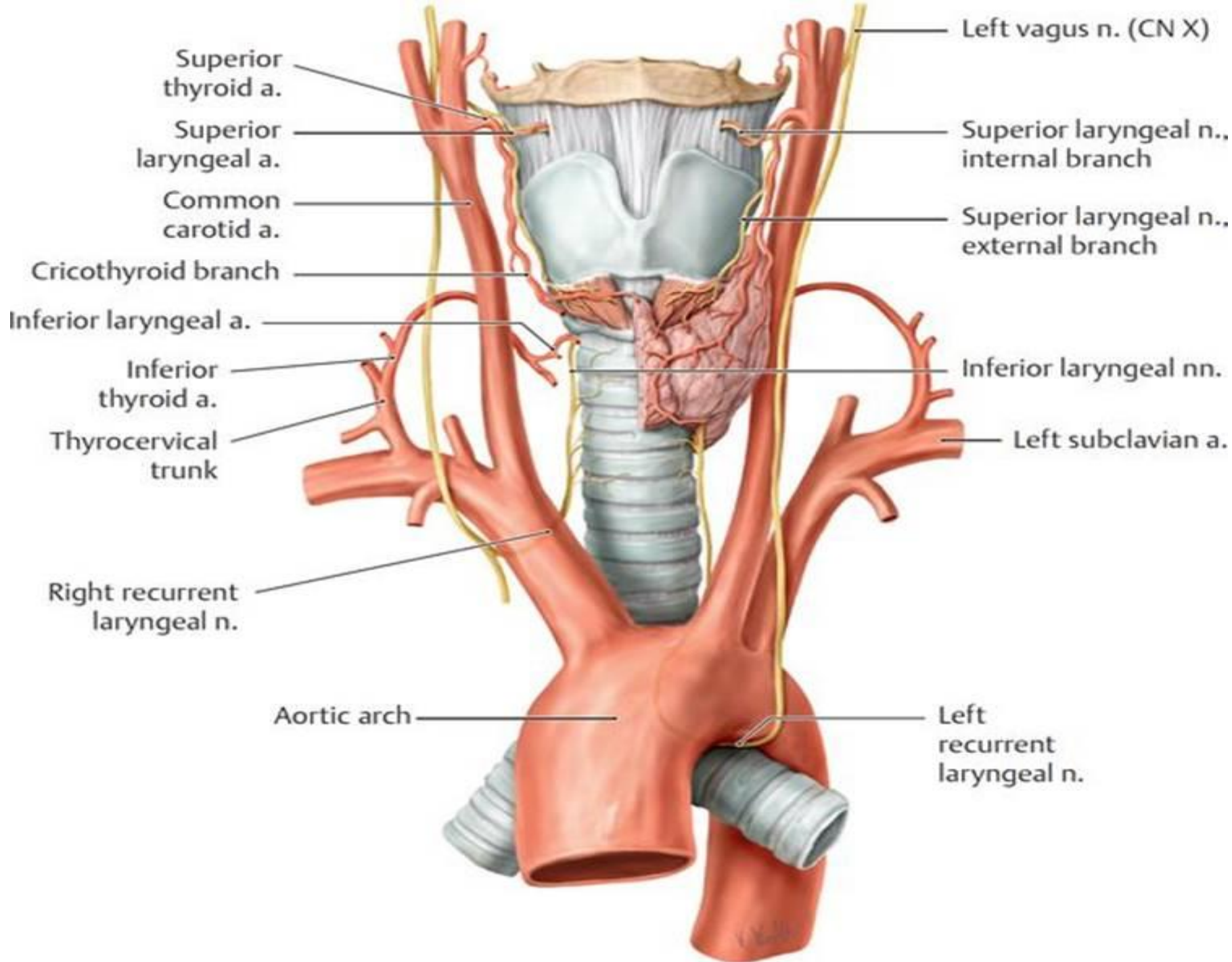
Posterior cricoarytenoid

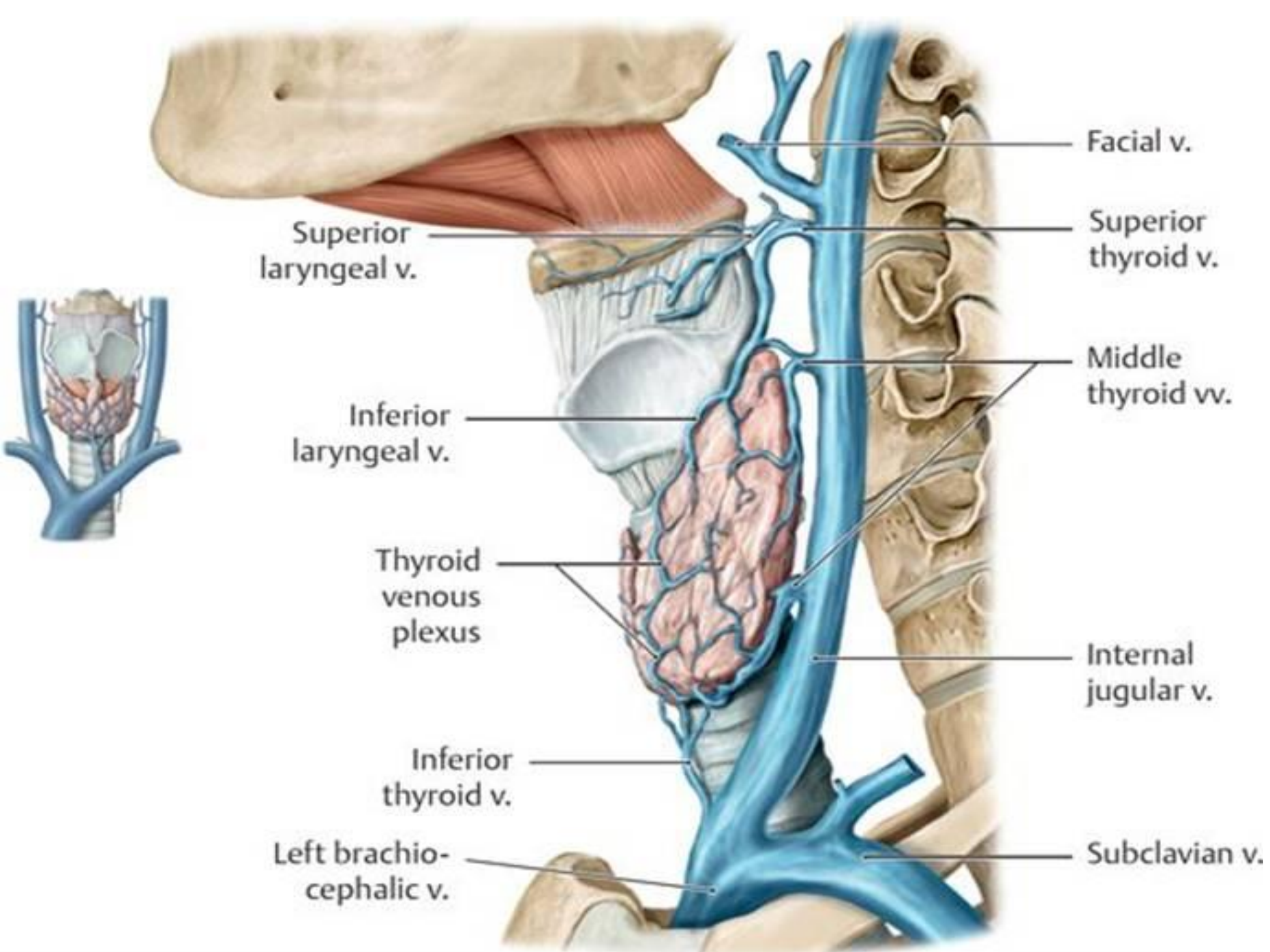
Oblique arytenoid

Transverse arytenoid

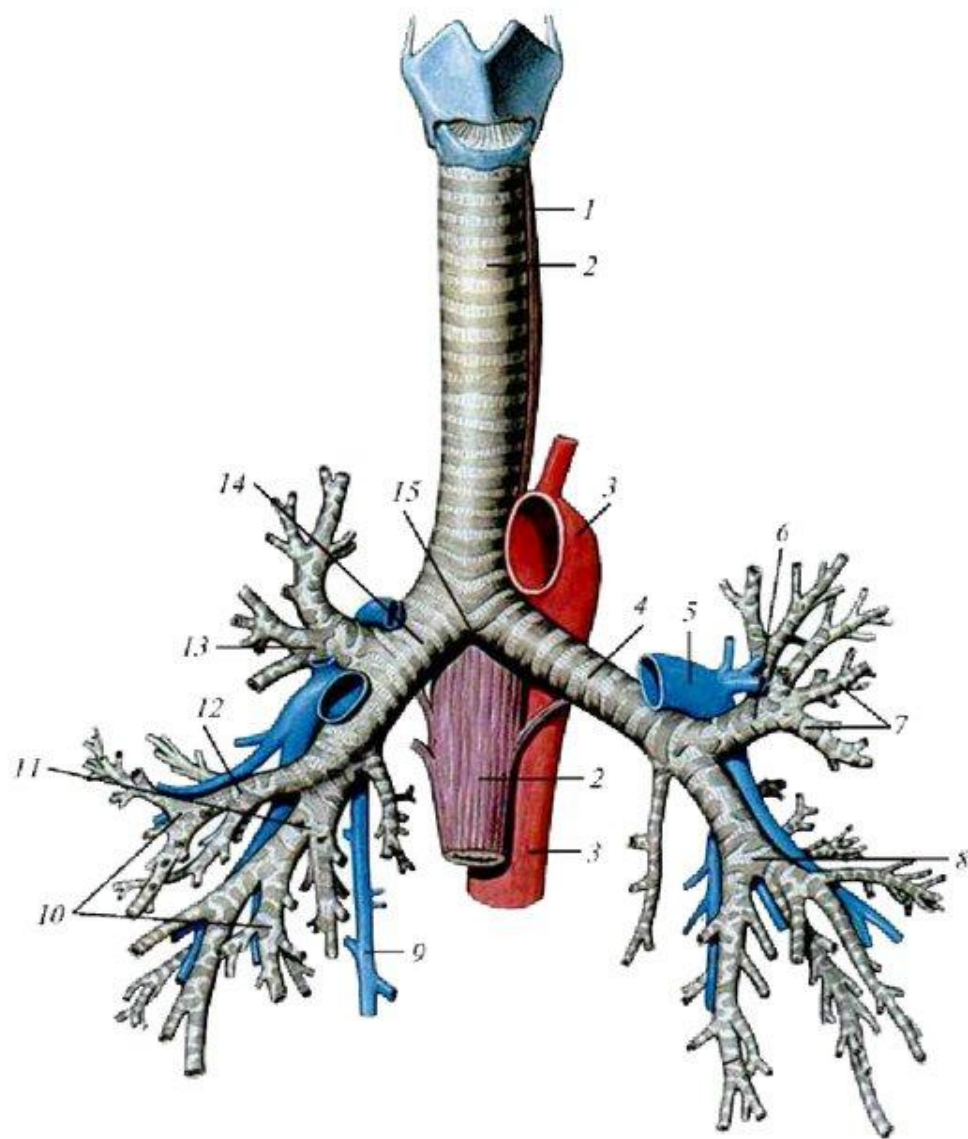
Oblique arytenoid



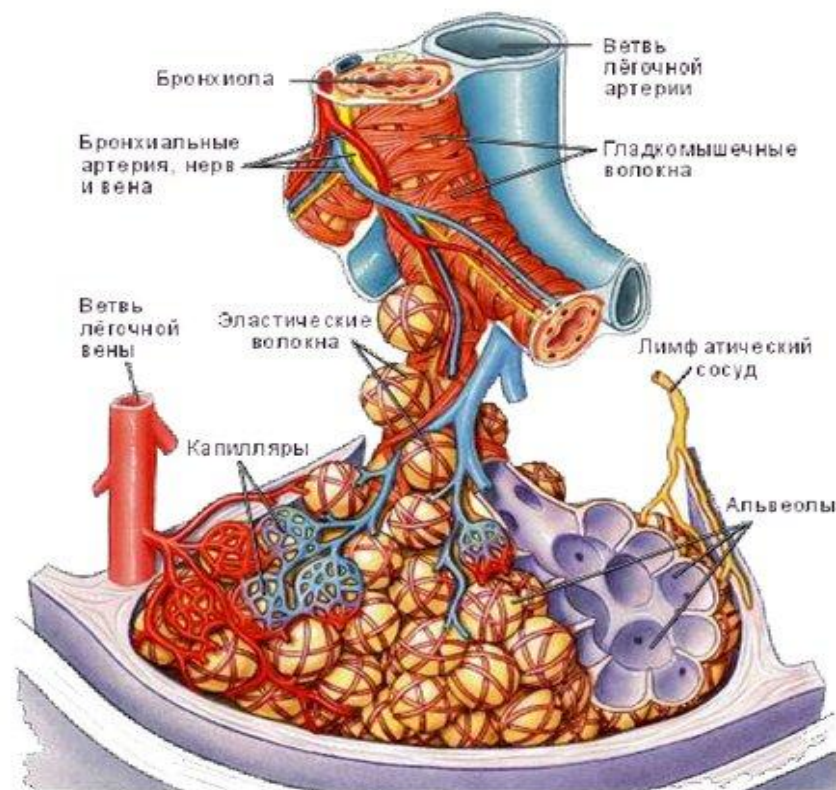
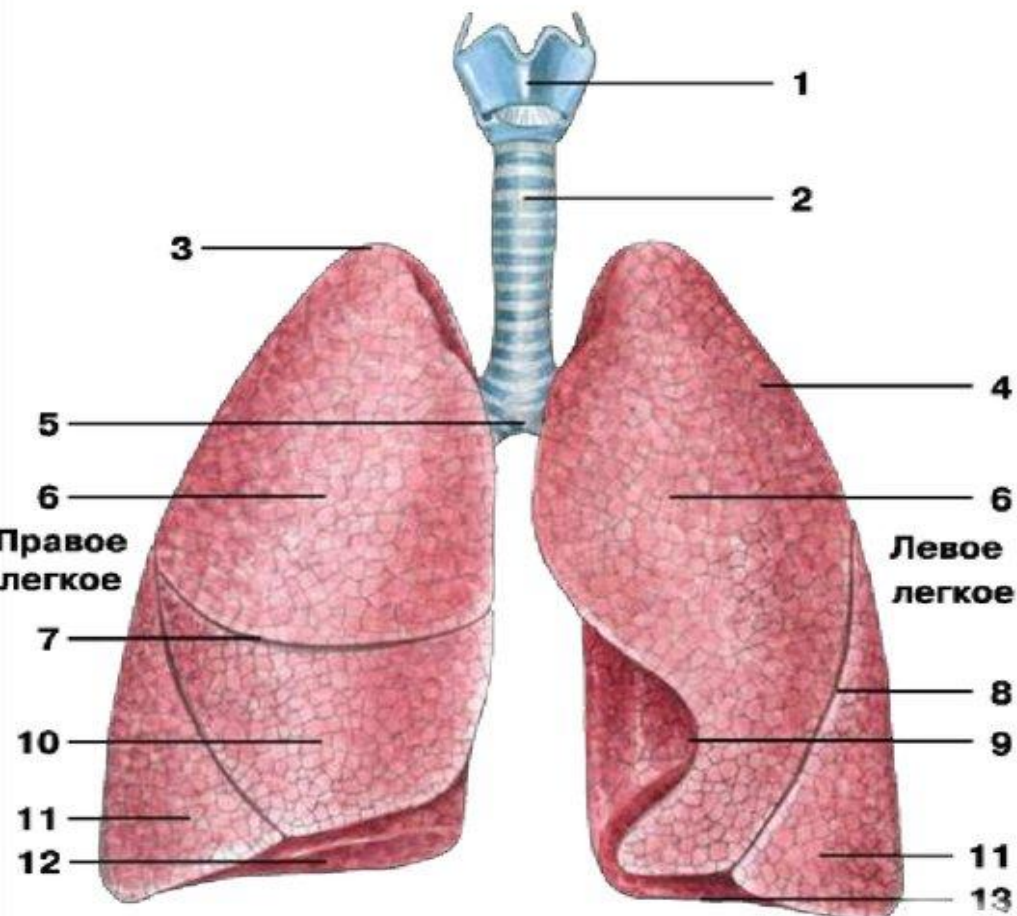


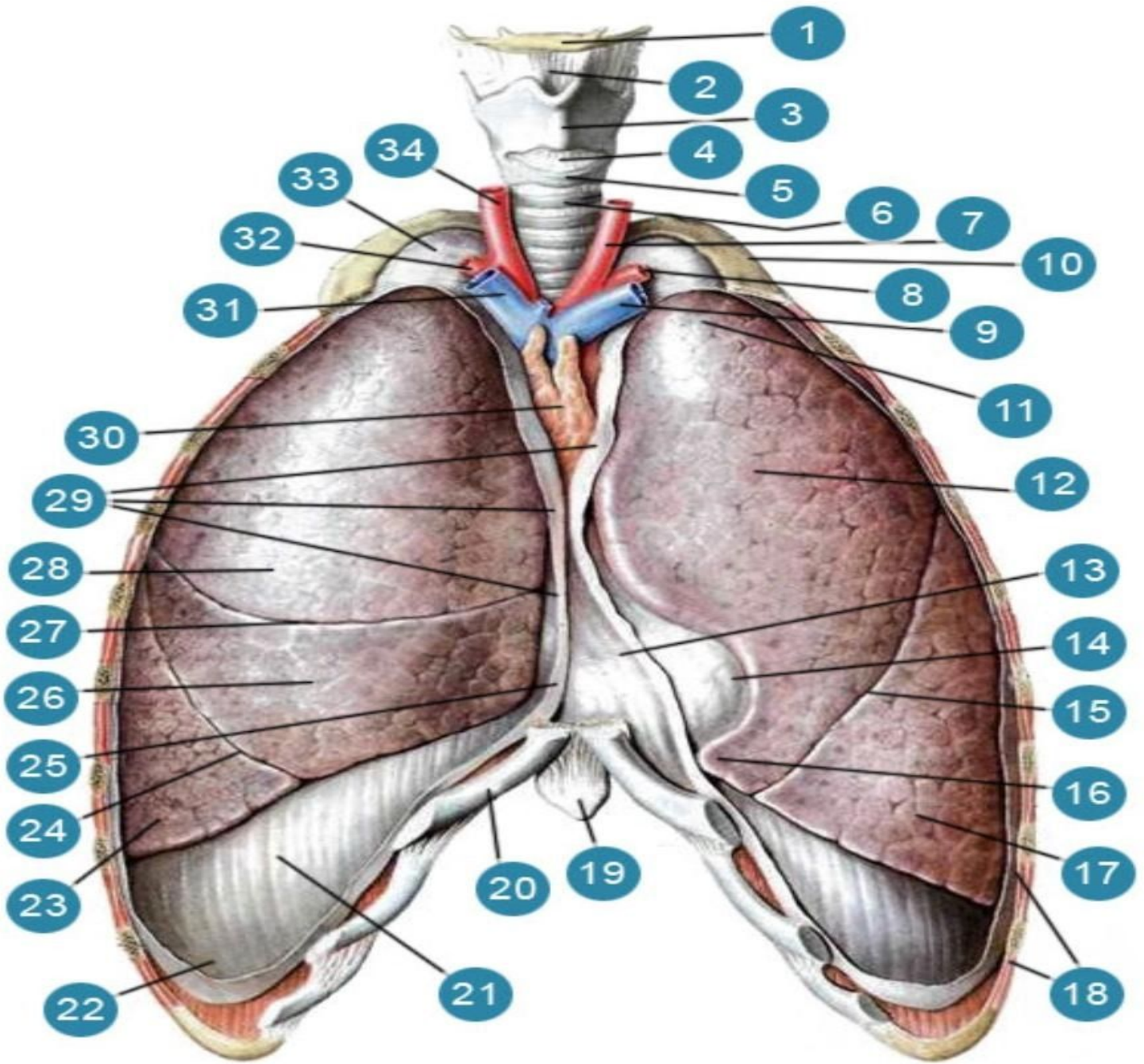


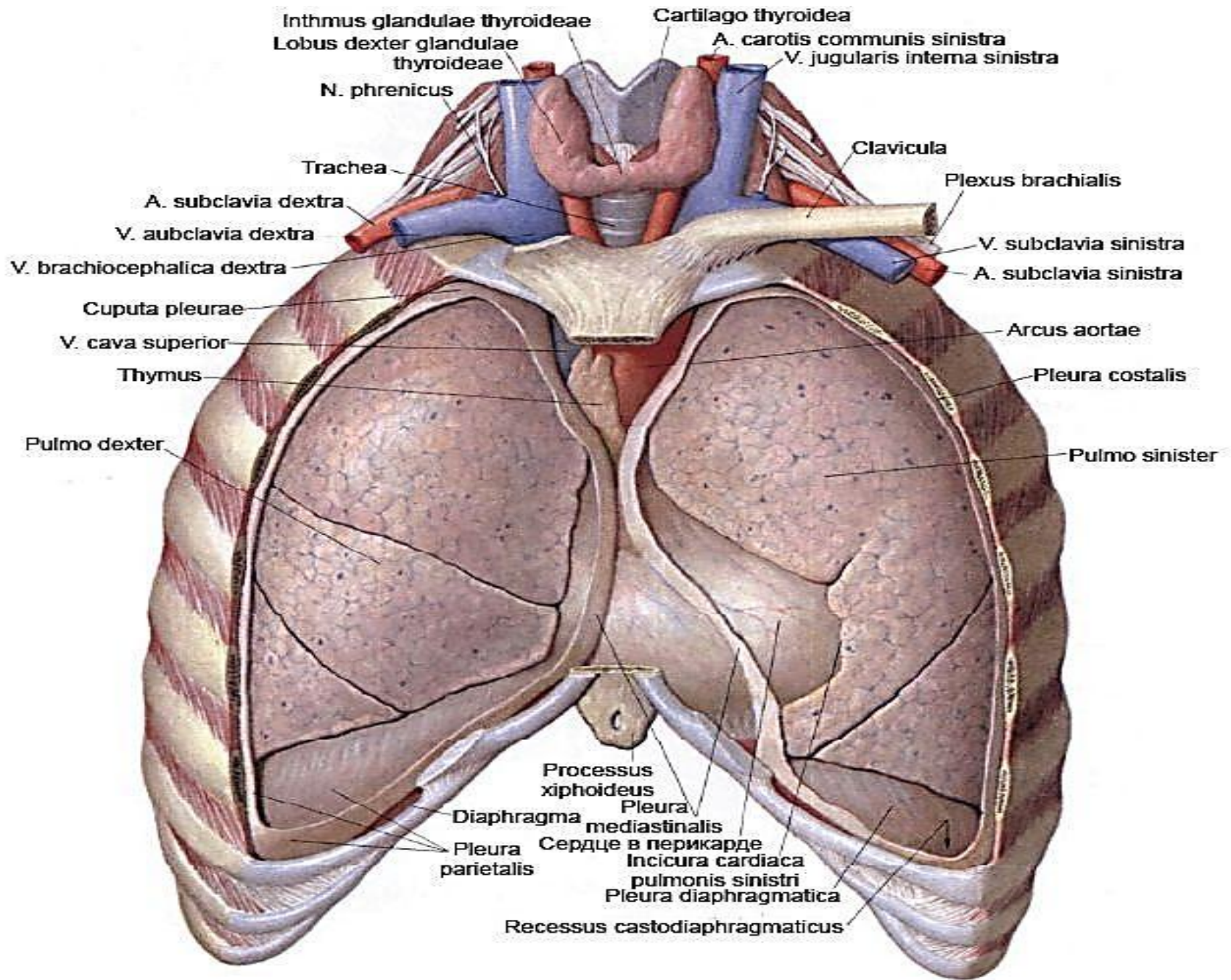
Трахея. Главные бронхи



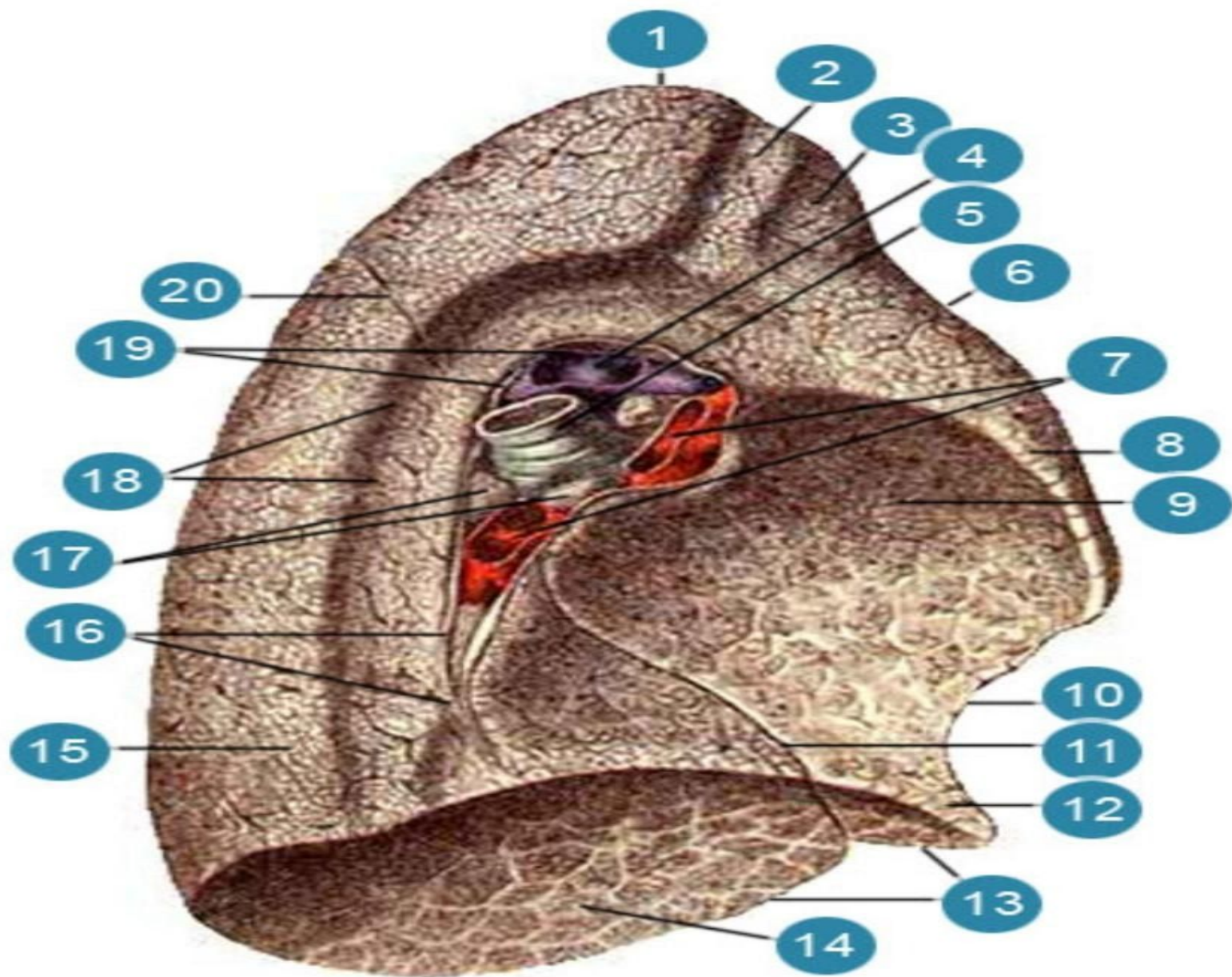
Лёгкие







Левое легкое (pulmo sinister)



Правое легкое (pulmo dexter)

