

- PLAN NOTES**
1. ALL DIMENSIONS ARE TO FACE OF FOUR FRAMING MEMBER UNLESS NOTED OTHERWISE.
 2. PROVIDE A METALLIC SEALANT AT INTERSECTION OF ALL EXTERIOR PARTITIONS & ROOFING (BOTH SIDES OF PARTITION).
 3. SEE SFT A-103 FOR DOOR FINISH SCHEDULE AND WINDOW SCHEDULE.
 4. SEE SFT A-104 FOR DOOR SCHEDULE.
 5. VERIFY SIZE AND LOCATION OF MECHANICAL, ELECTRICAL EQUIPMENT, PANEL PREPARATIONS, AND SUPPORTS WITH MECHANICAL AND ELECTRICAL DRAWINGS.
 6. FLOOR FLOORING TO FLOOR FINISH & 3/8" DIA. FOOT ANCHOR.
 7. ALL FLOORS TO BE EQUIPPED WITH AUTOMATIC SPRINKLER SYSTEM PROVIDING THE AREA OF SFT A-105 FOR WALL TYPES AND RATED ASSEMBLIES.
 8. SEE SFT A-106 & A-107 FOR TYPICAL JAIL PLANS.
 9. SEE SFTS A-108 & A-109 FOR REFLECTED CEILING PLANS.

PABLO DAVIS L.D.H.A. L.P.

SENIOR HOUSING

DETROIT, MICHIGAN

FUSCO SHAFFER & PAPPAS INC.

ARCHITECTS AND PLANNERS
2832 FRANKLIN ROAD
SOUTHFIELD, MICHIGAN 48034
248-336-3400

DEVELOPMENT TEAM

DEVELOPER
LIFE PROPERTIES INC.
15000 NORTHFIELD RD. SUITE 200
FARMINGTON HILLS, MICHIGAN 48334

SPONSORS
PARSONS INTERNATIONAL, CHRYSLER INC.,
DETROIT MISSION
PROJECT ECONOMIC VALUE
DETROIT MISSION

ARCHITECT
PABLO DAVIS L.D.H.A. L.P.
15000 NORTHFIELD RD. SUITE 200
FARMINGTON HILLS, MICHIGAN 48334
248-336-3400

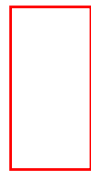
CIVIL ENGINEER
TERRY W. HARRIS & ASSOCIATES, INC.
25000 FRANKLIN ROAD
SOUTHFIELD, MICHIGAN 48034
248-336-3400

STRUCTURAL ENGINEER
DAVID DEAN INC.
15000 NORTHFIELD RD. SUITE 200
FARMINGTON HILLS, MICHIGAN 48334
248-336-3400

ELECTRICAL ENGINEER
MCCORMICK ENGINEERS
24000 W. 13 MILE AVE. SUITE 200
SOUTHFIELD, MICHIGAN 48034
248-336-3400

MECHANICAL ENGINEER
DANIEL SARTORELLO ARCHITECTS
161 W. WABE STREET
MONTAIGNE, MICHIGAN 48346
248-336-3400

CONTRACT WITH: PABLO DAVIS L.D.H.A. L.P.



Electrical Room



Mechanical Room

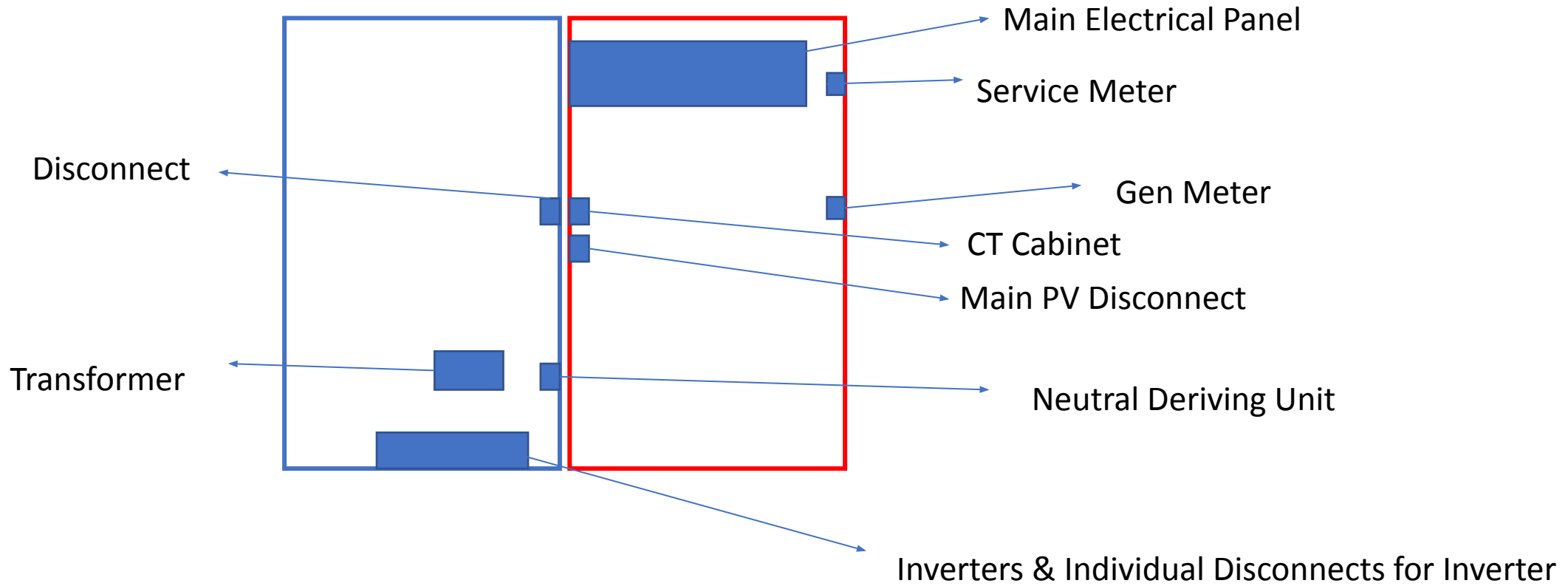
FIRST FLOOR PLAN
SCALE: 1/16" = 1'-0"

DATE: _____ PERMIT: _____

101 PLAN

DRAWING TITLE
FIRST FLOOR PLAN

DRAWING NUMBER
A101



 Electrical Room

 Mechanical Room