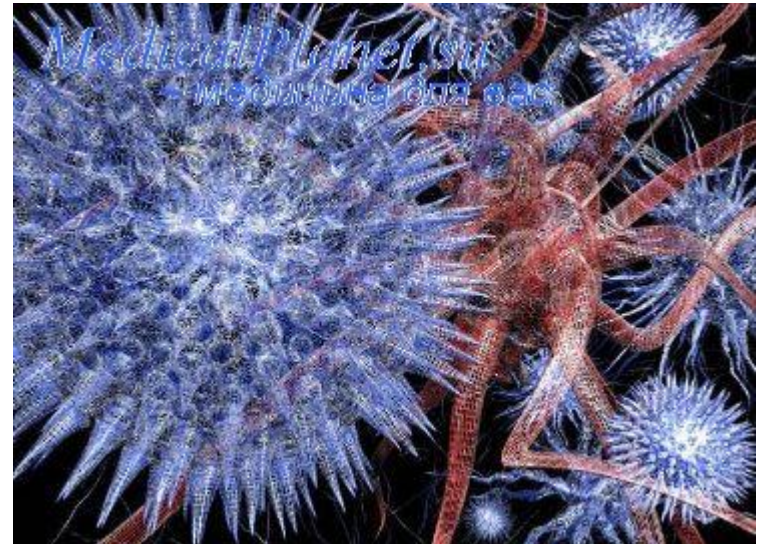
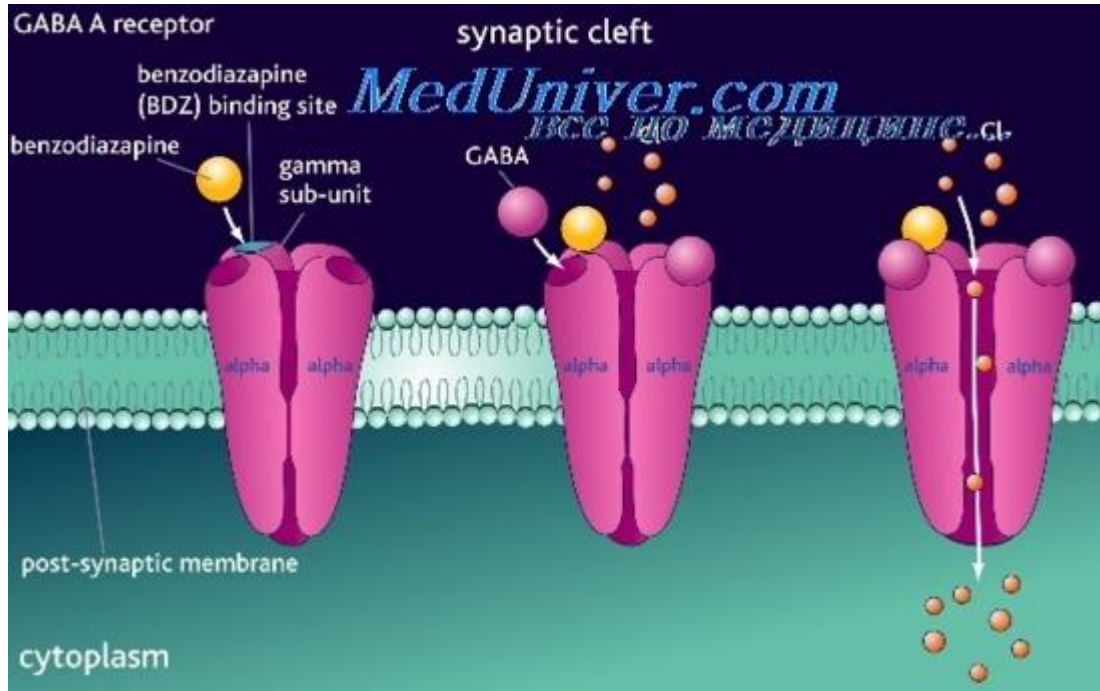
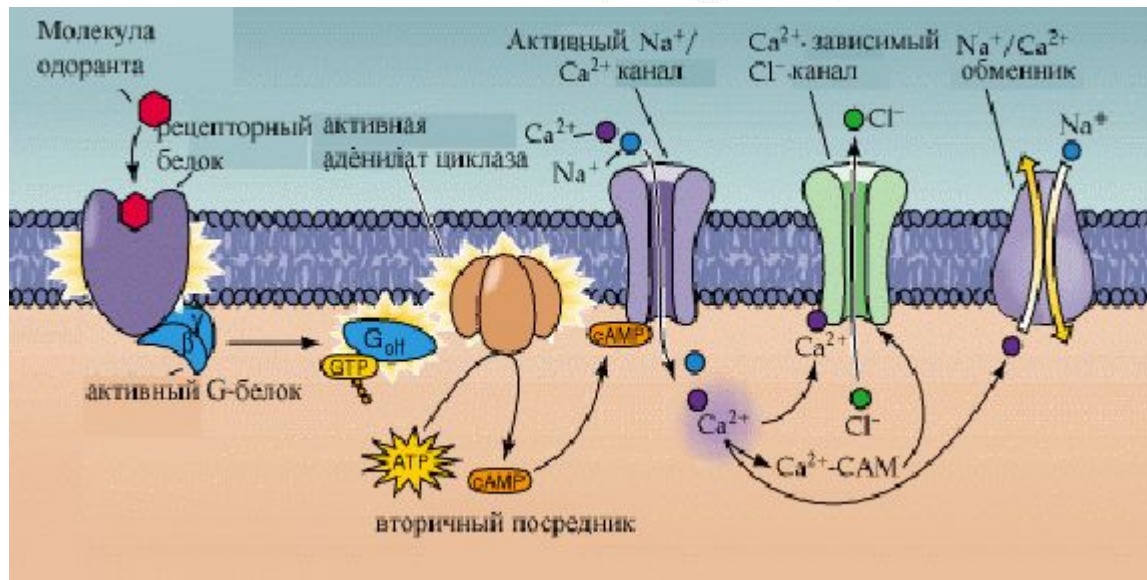
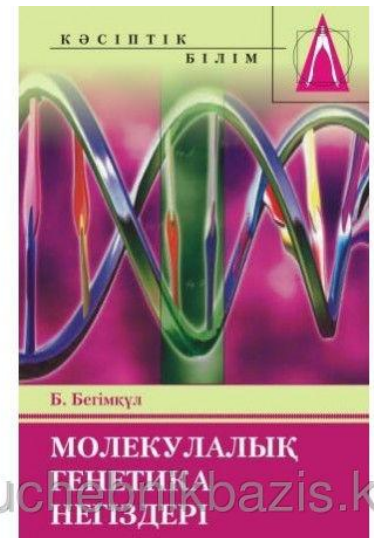
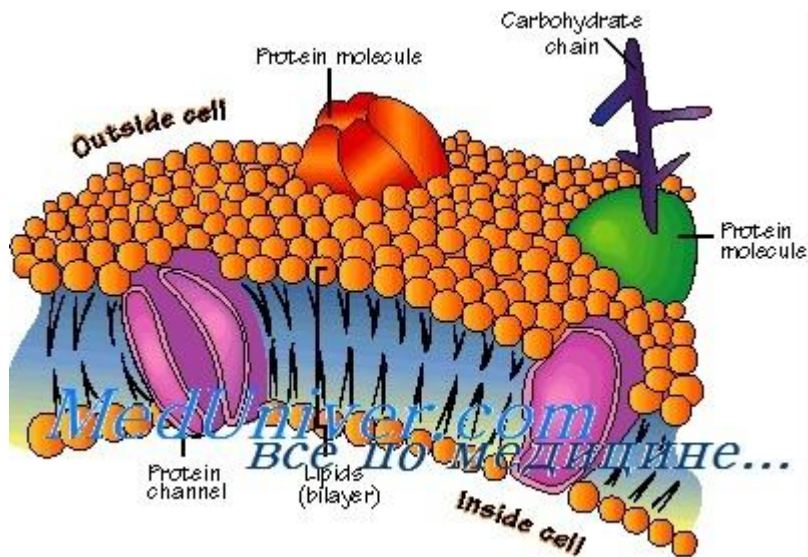


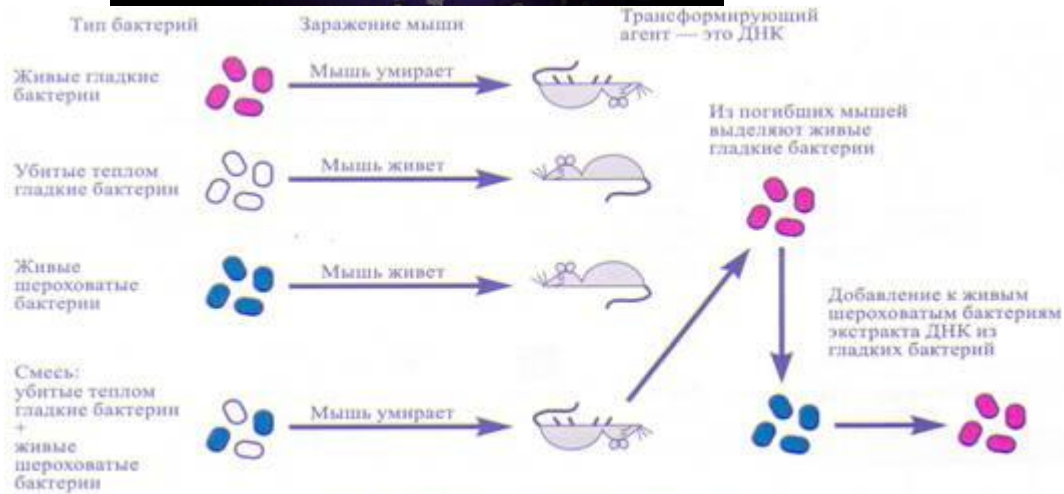
**FIGURE 8.4** Specialized transduction by lambda phage in *E. coli*. In this process, phage DNA always inserts itself into the bacterial host chromosome at a particular site. When the phage replicates, it takes bacterial genes from either side of the site and packages them along with its own DNA into new phages. Only genes adjacent to the insertion site are transduced, rather than genes from other parts of the bacterial chromosome. These genes may then be introduced into the phage's next host cell, where they will confer new genetic traits.











Трансформация у бактерий *Рейтоссис*



# трансдукция

