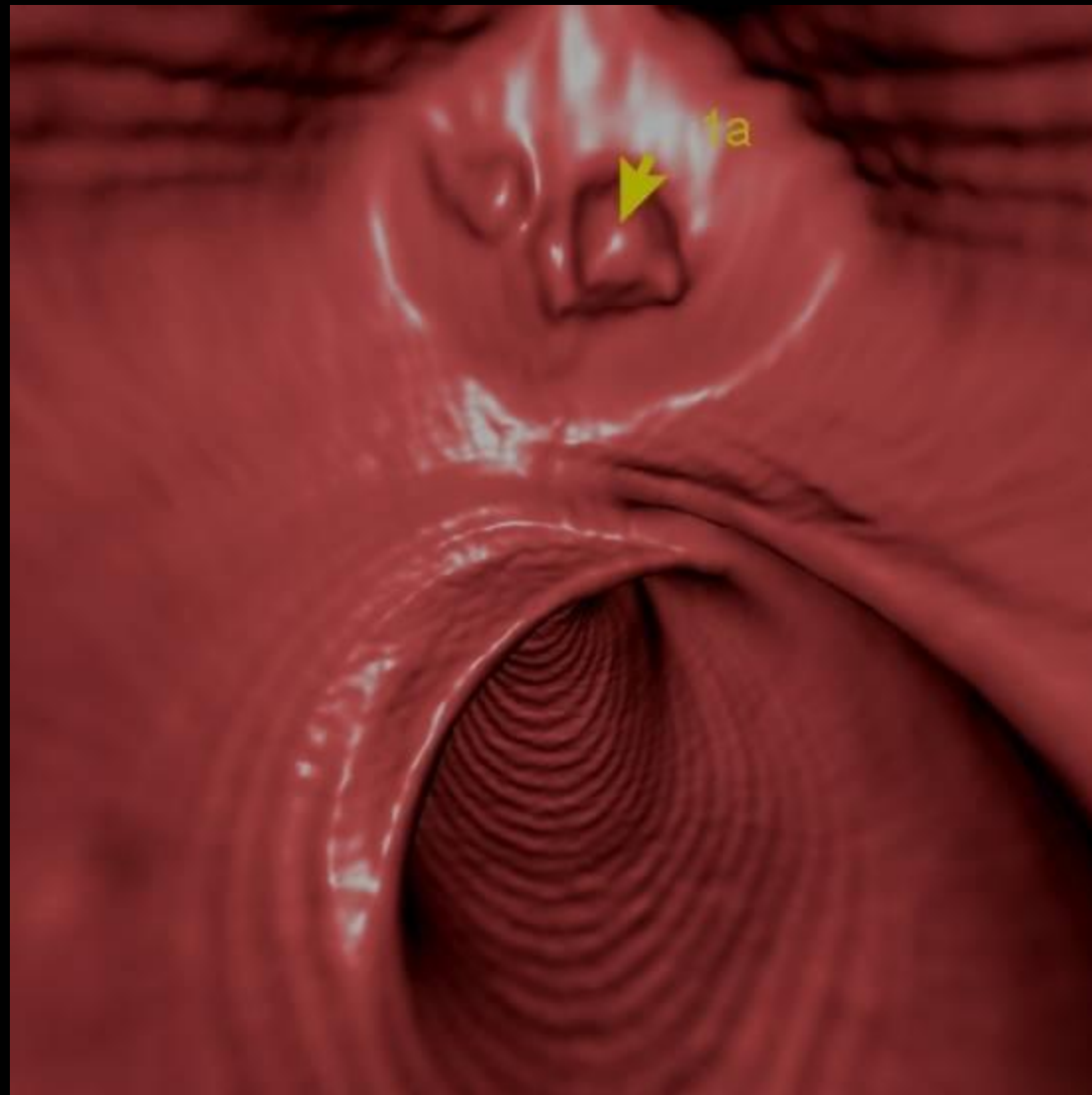


QUIZ for CT Colonography

Filling defect with geometric borders and sharp angles



Viewing

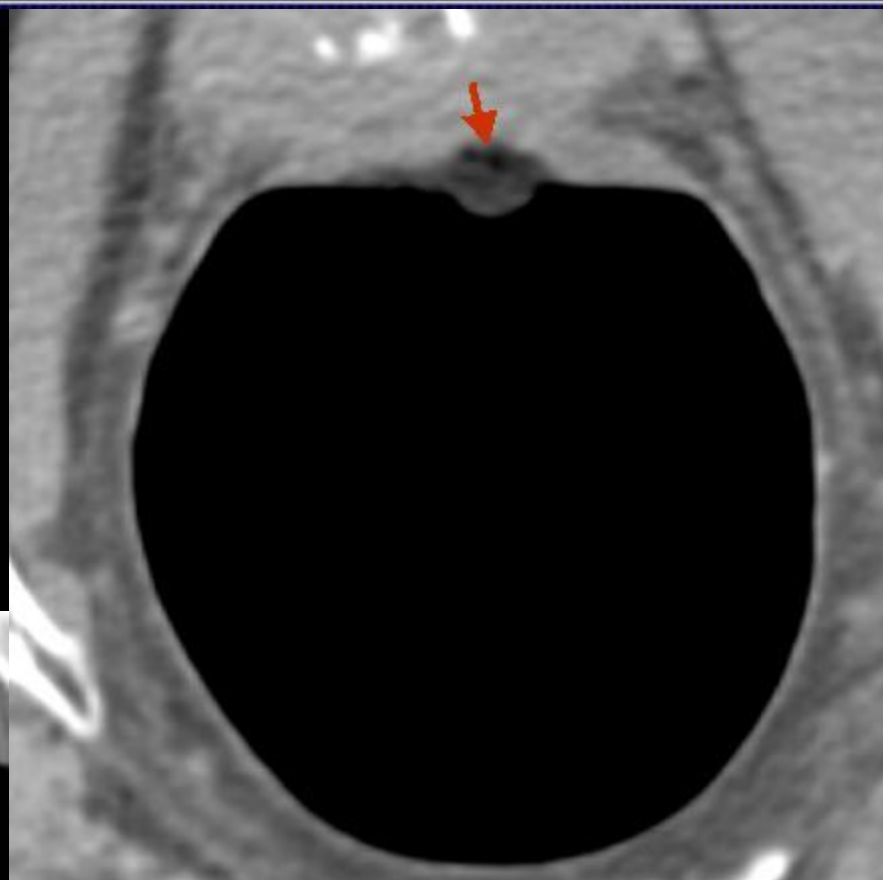
Filming

3D

Tools	Image	View

Patient		

Areas of low density



Fecal material



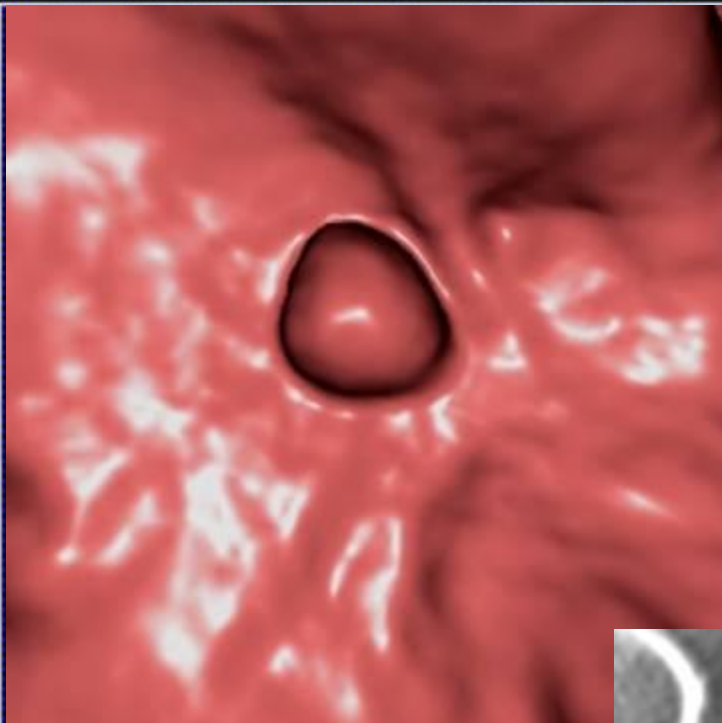
Tools	Image	View

Patient		

Viewing

Filming

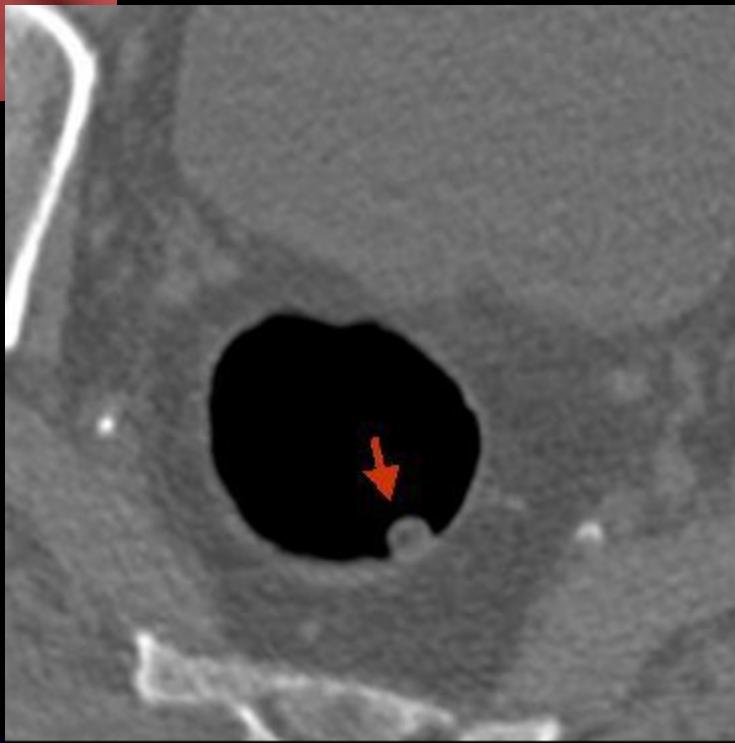
3D



Round filling defect

Area of low density

Fecal material



Viewing

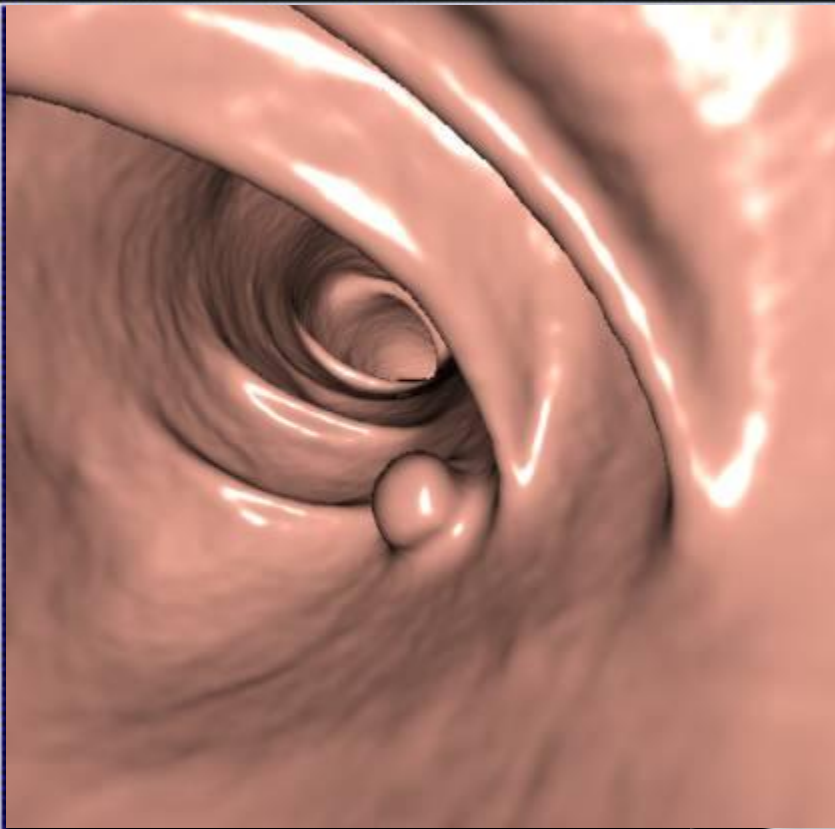
Filming

3D

Tools Image View

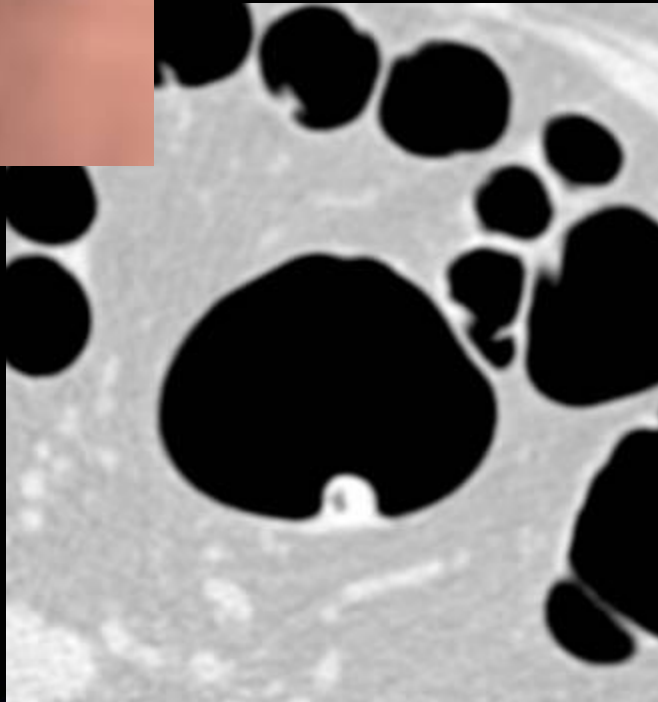
auto

Patient



Round filling defect
with an area of low
density

Benign polyp
previous biopsy



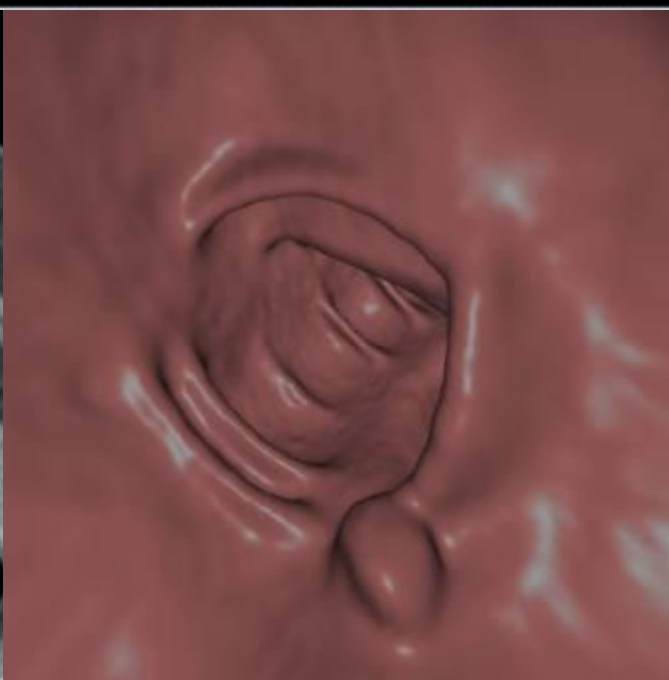
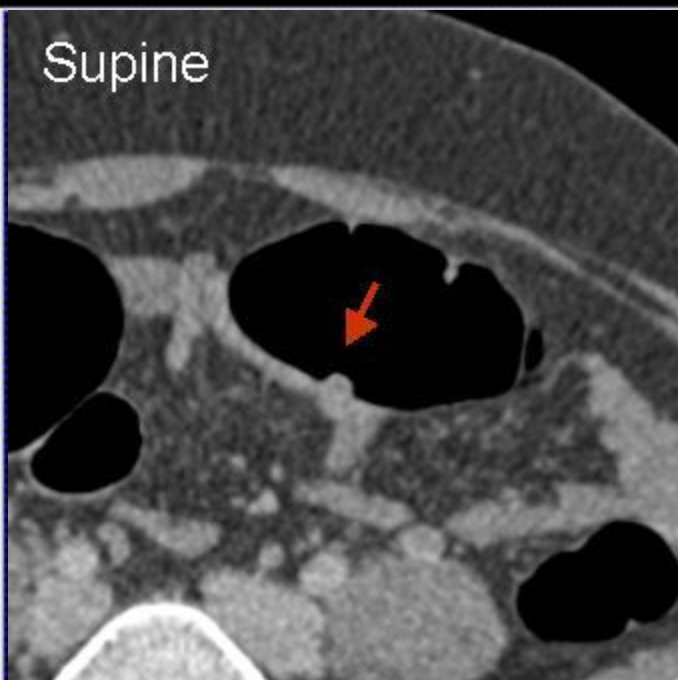
Viewing

Filming

3D



Supine



Prone



Lesion shift to the anterior wall

Fecal material

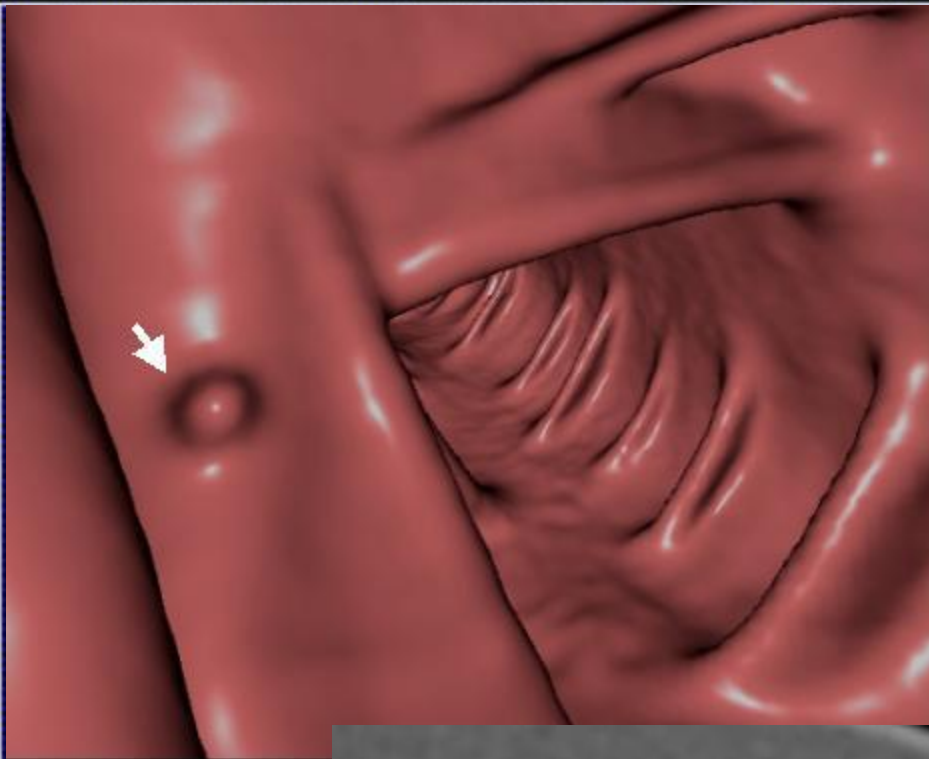
Viewing

Filming

3D



Complete rim
around the
lesion



Diverticulum



Tools	Image	View

Patient		

Viewing

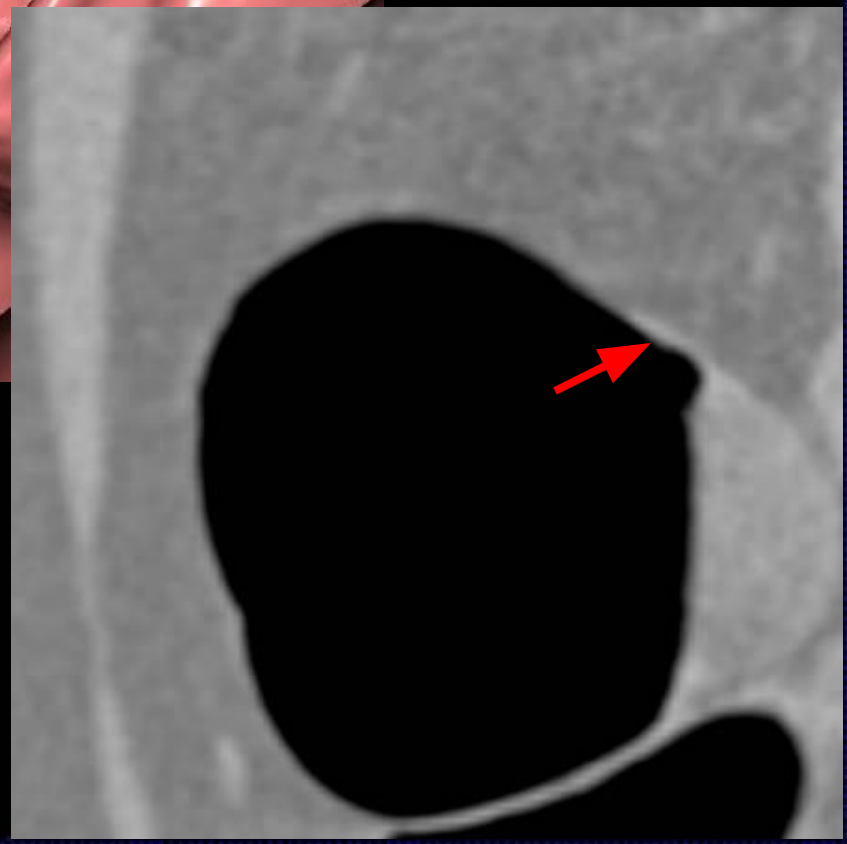
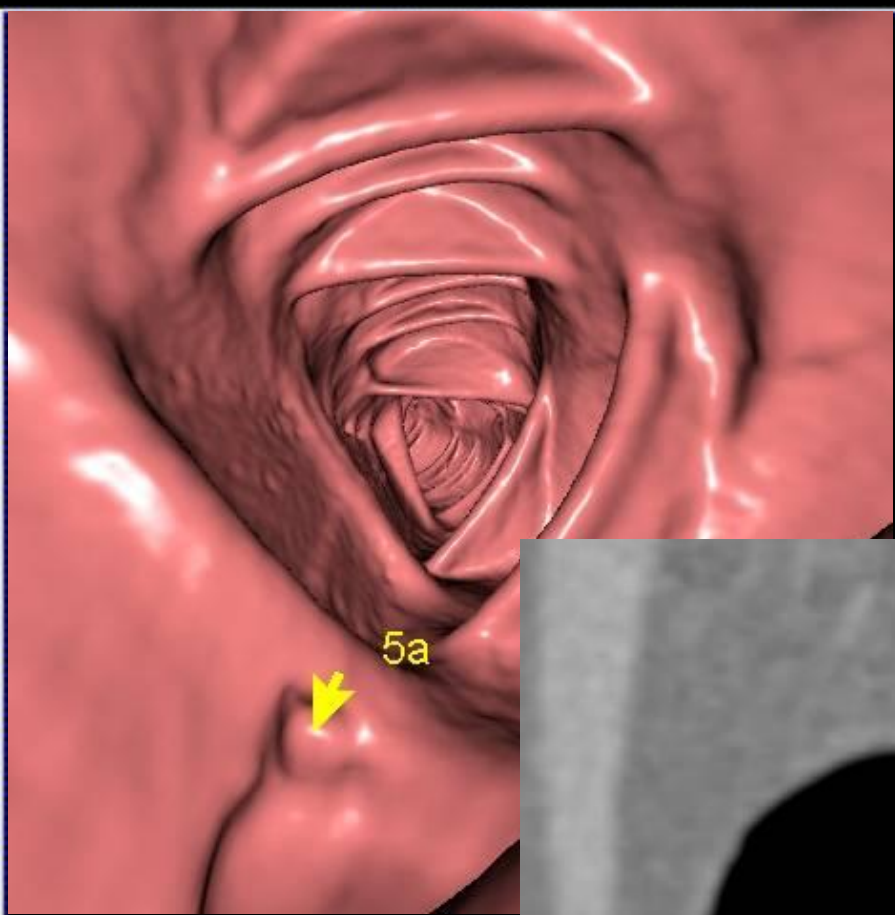
Filming

3D



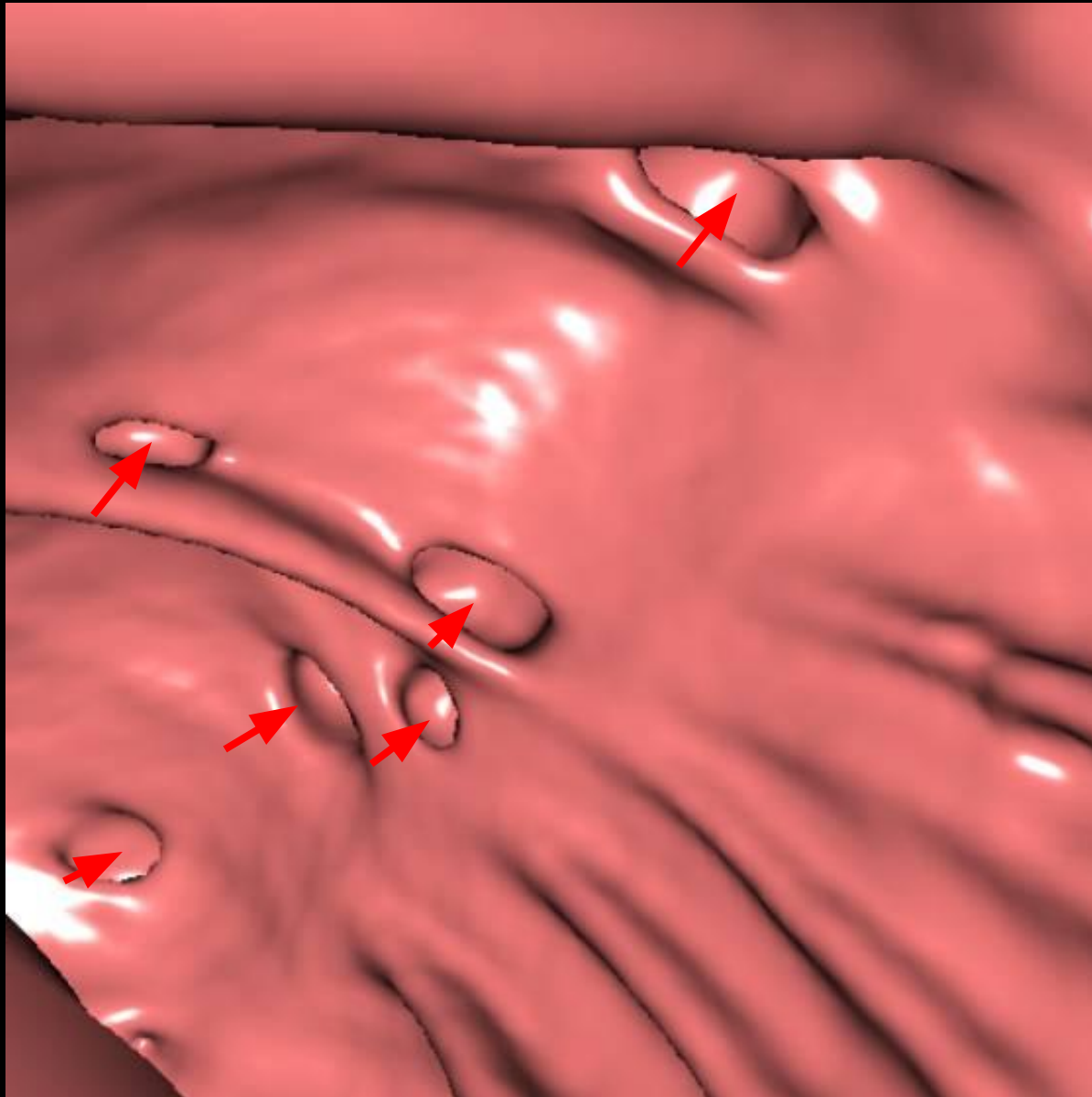
Tools	Image	View

Patient



Diverticulum

Multiple Diverticuli



Viewing

Filming

3D

Tools	Image	View

Patient		

Multiple Diverticuli



Viewing

Filming

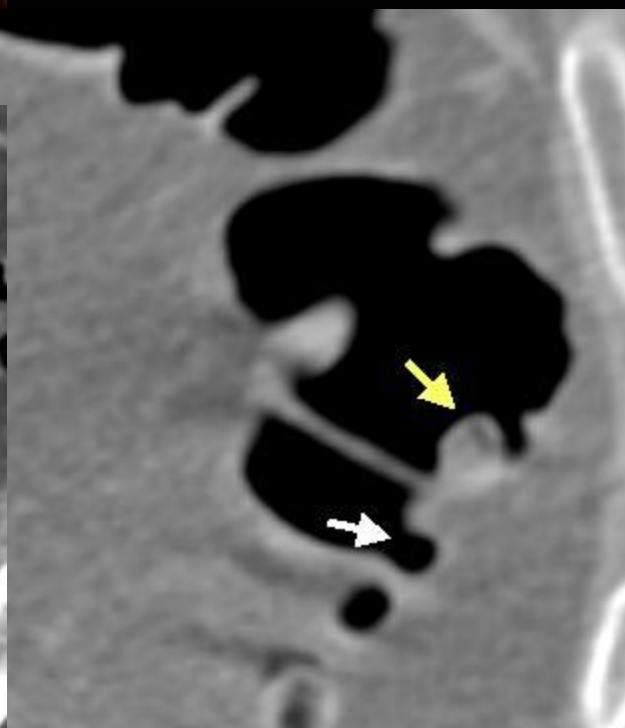
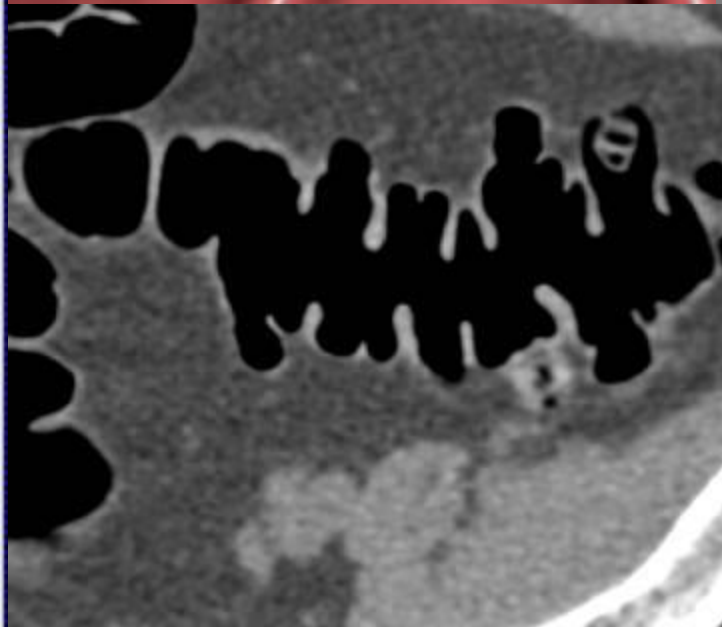
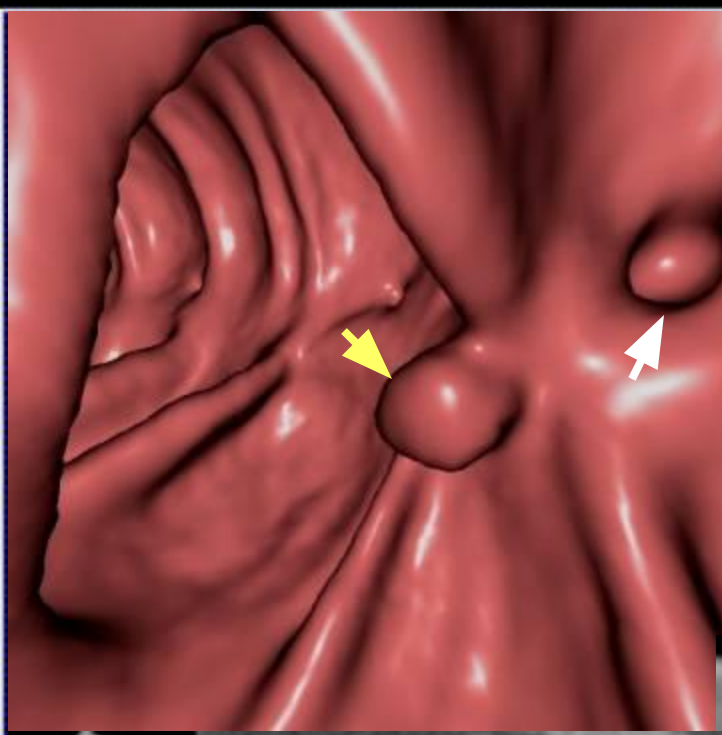
3D

Tools	Image	View

Patient		



**Remnant stool in
diverticular sacs**



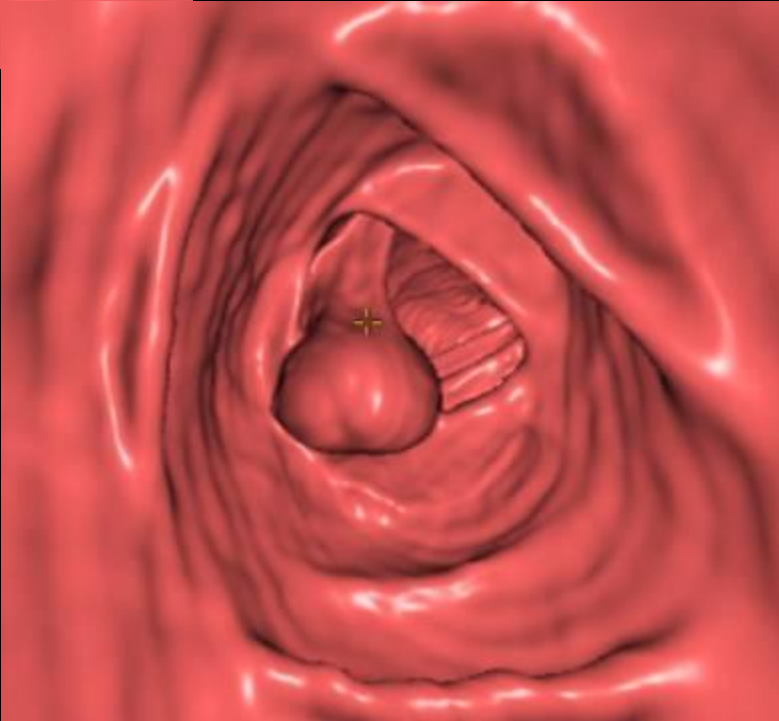
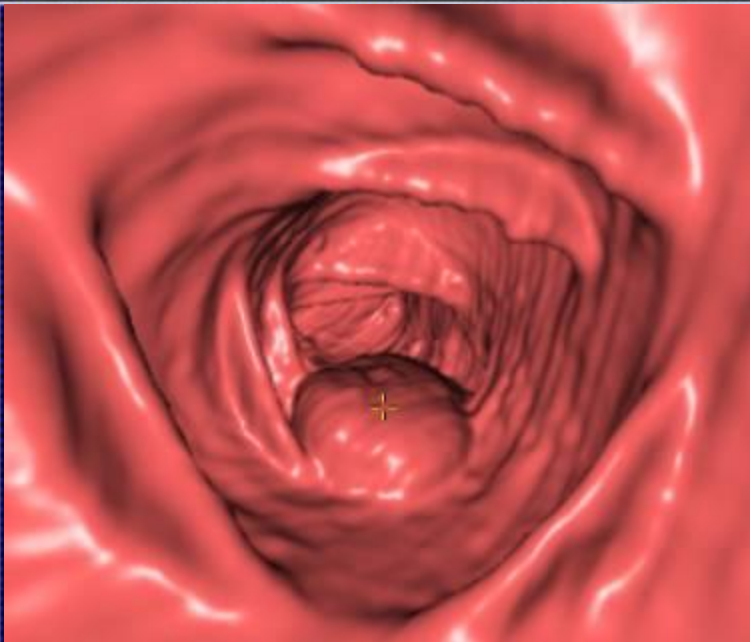
Tools	Image	View

Patient		





Pedunculated Polyp

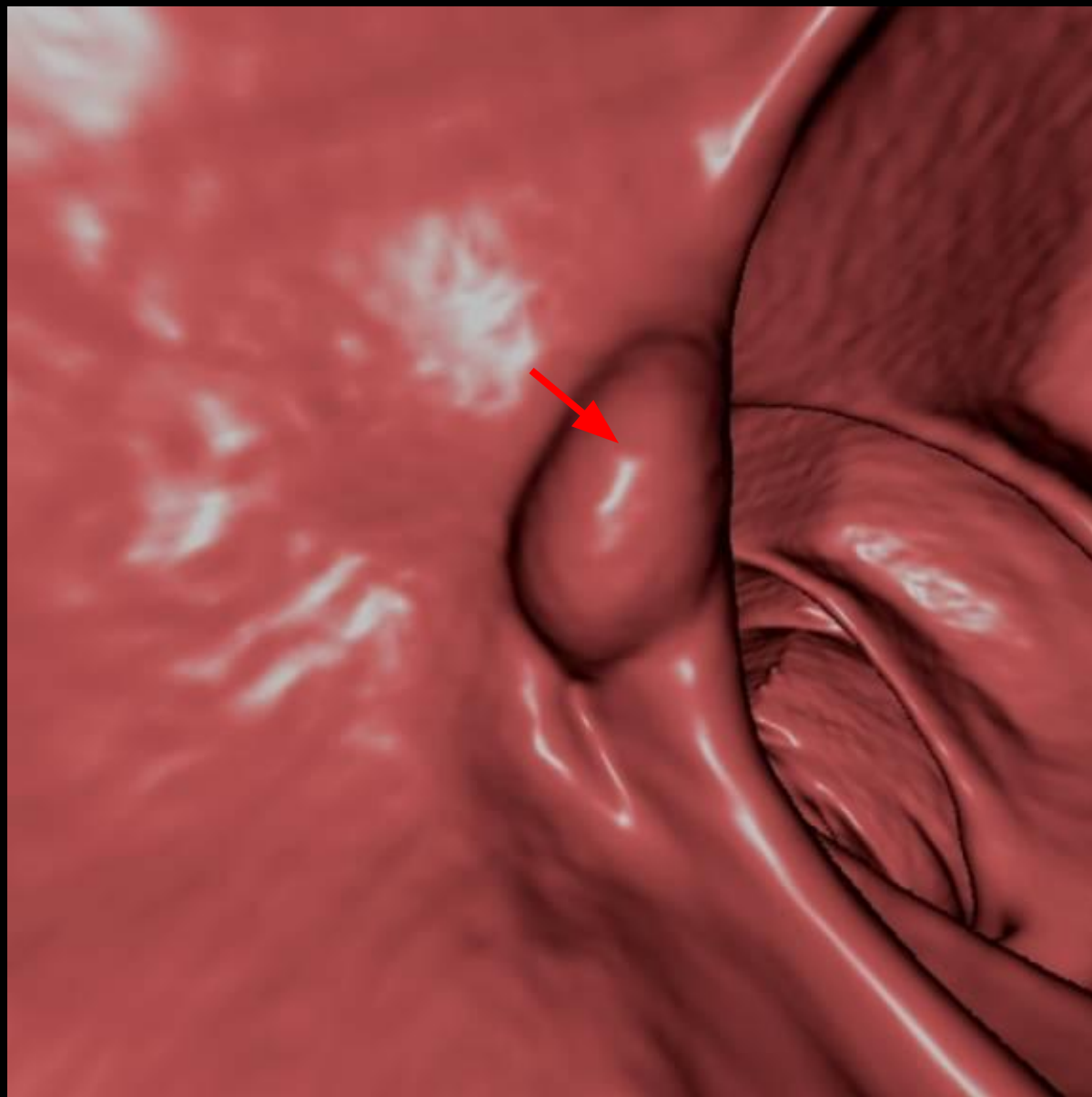


Tools	Image	View

Patient



Round, protruding lesion



Viewing

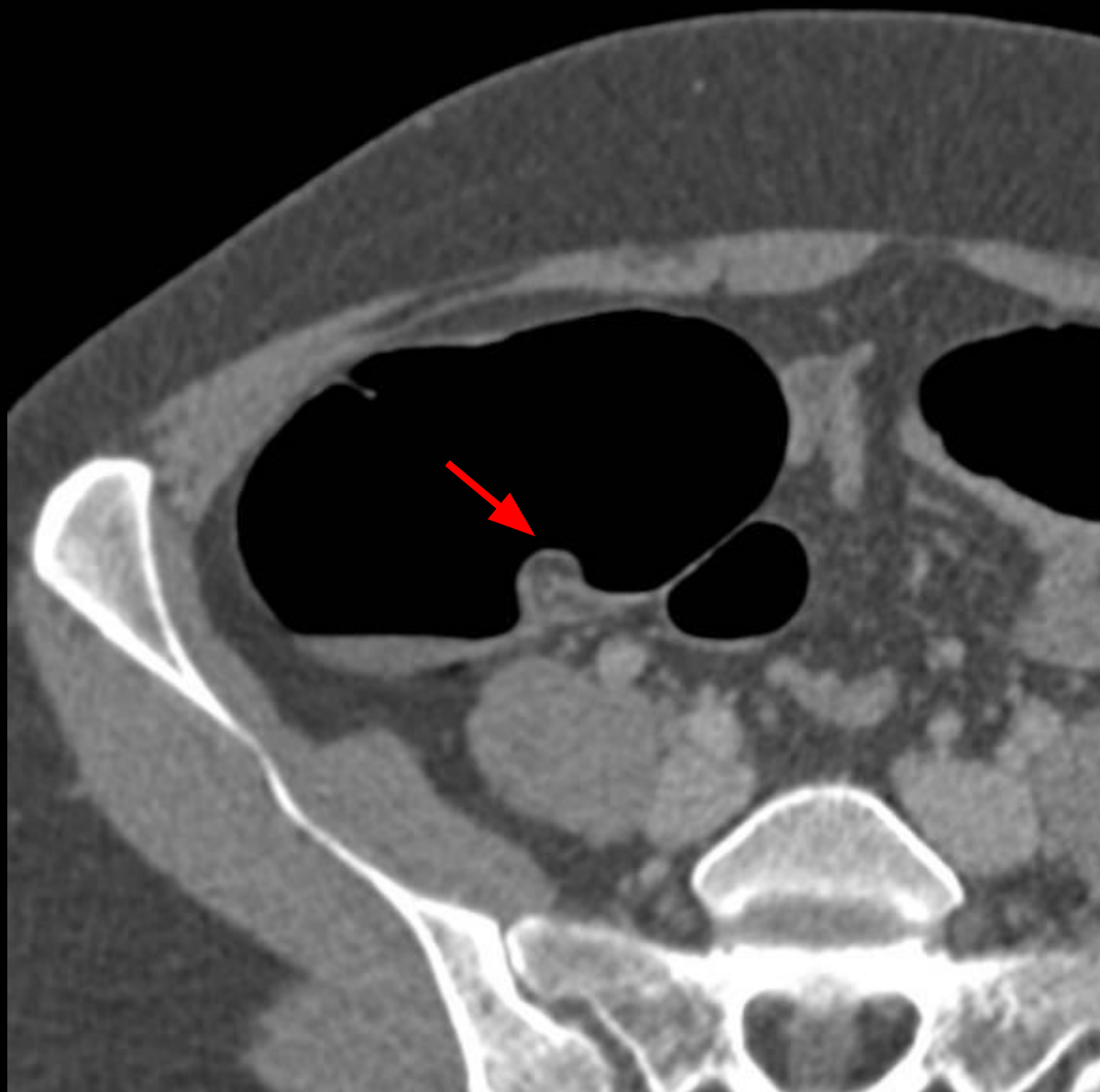
Filming

3D

Tools	Image	View

Patient		

Low, fatty density



Viewing

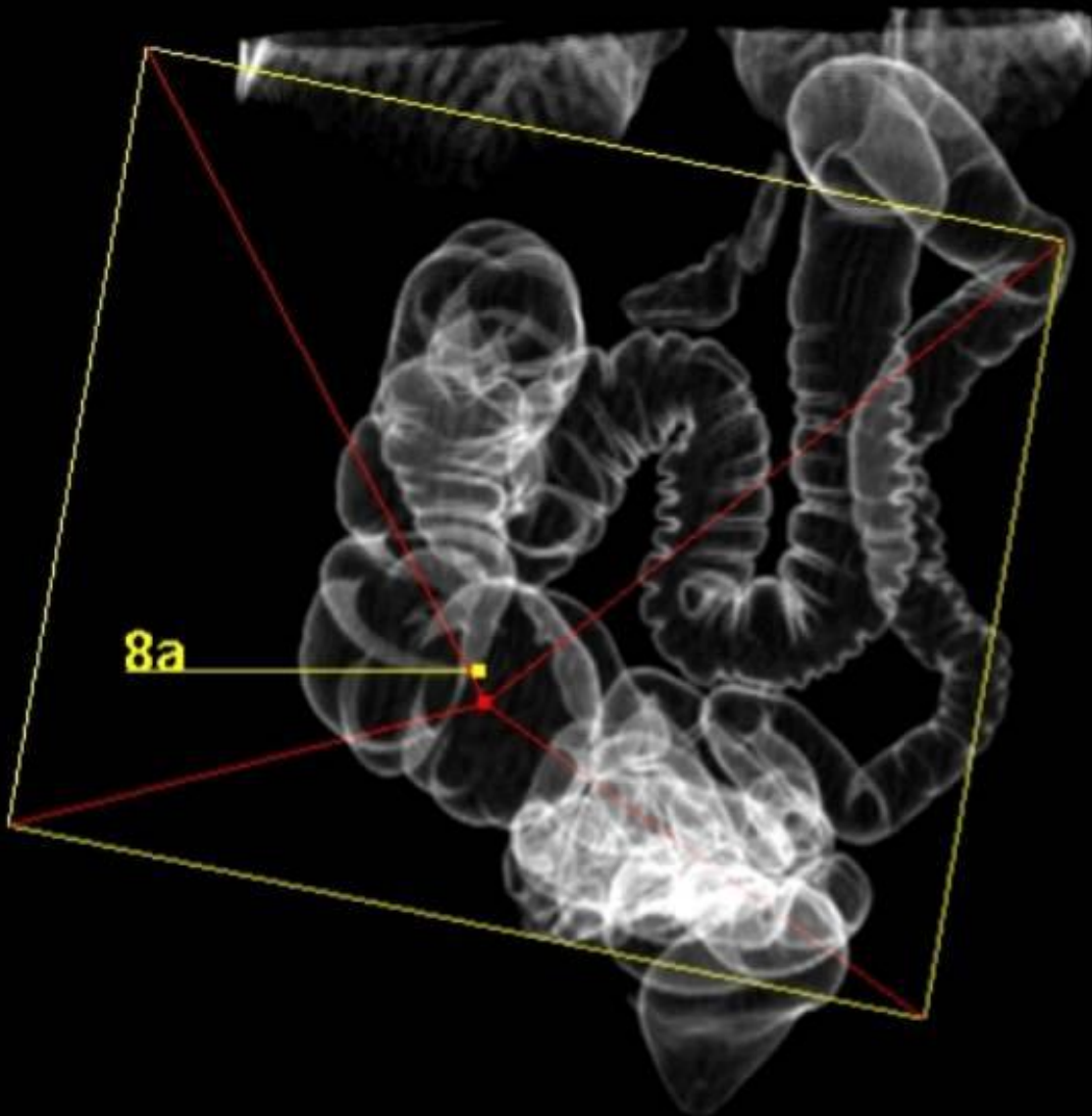
Filming

3D

Tools	Image	View

Patient		

Location in the cecum



Viewing

Filming

3D

Tools	Image	View

Patient		

Lipomatous ileocecal valve



Viewing

Filming

3D

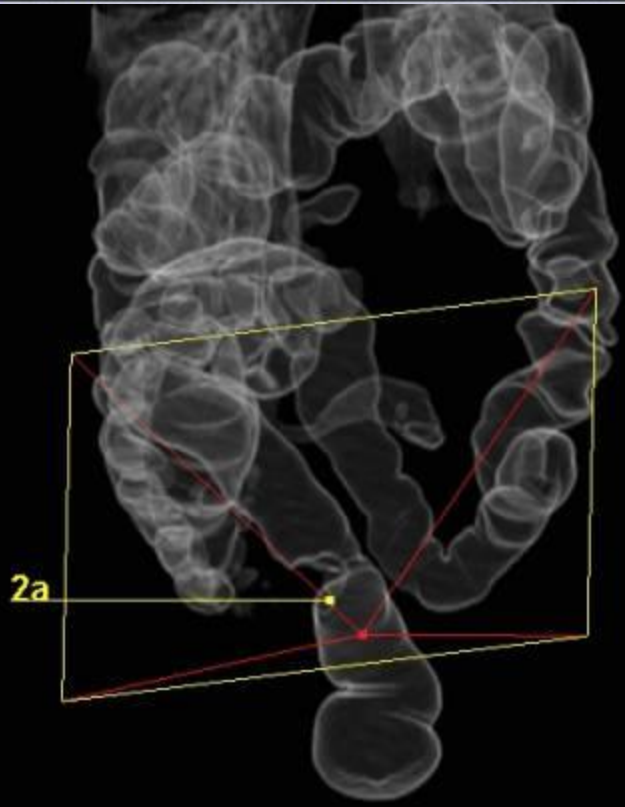
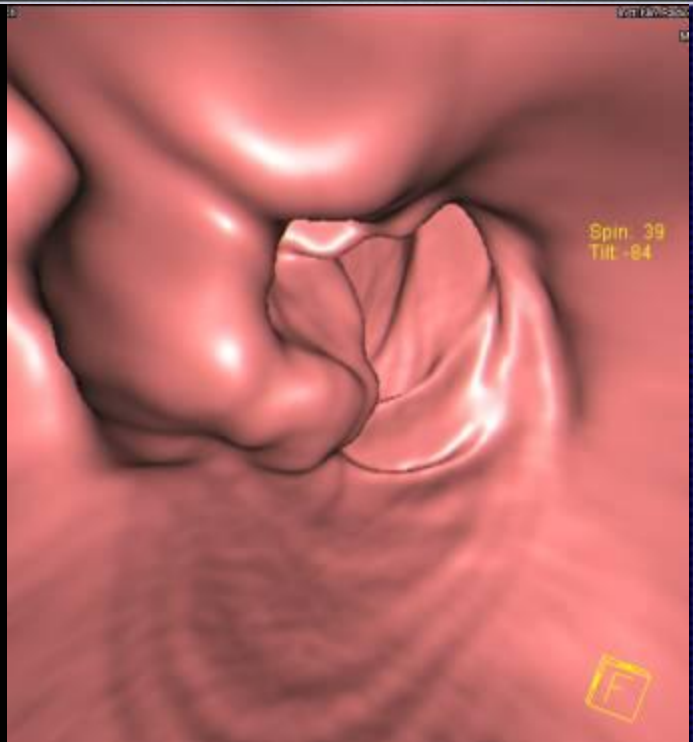
Tools	Image	View

Patient		

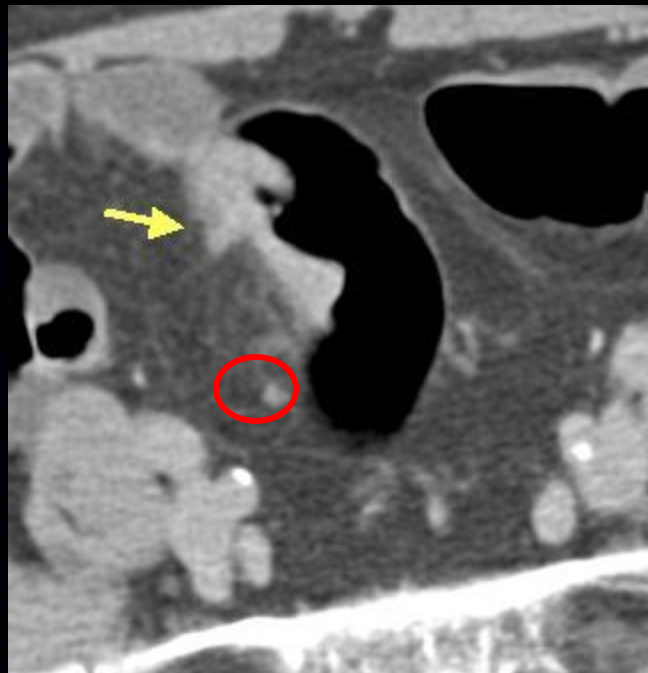
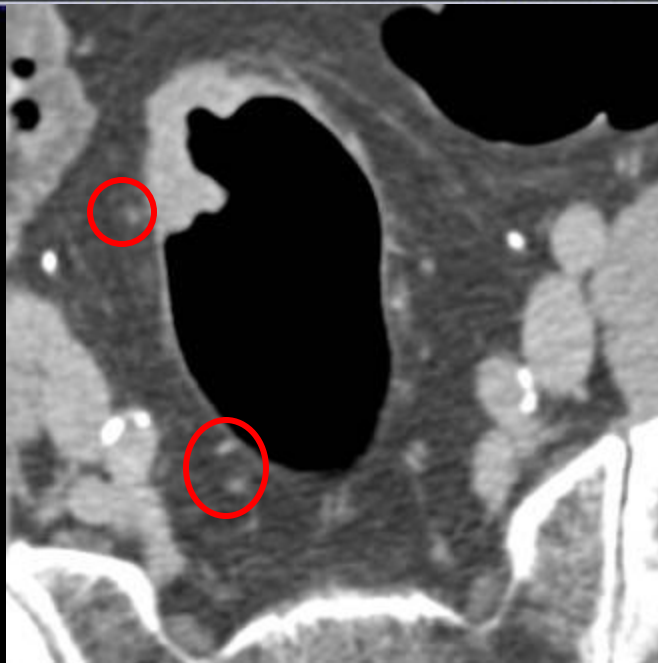
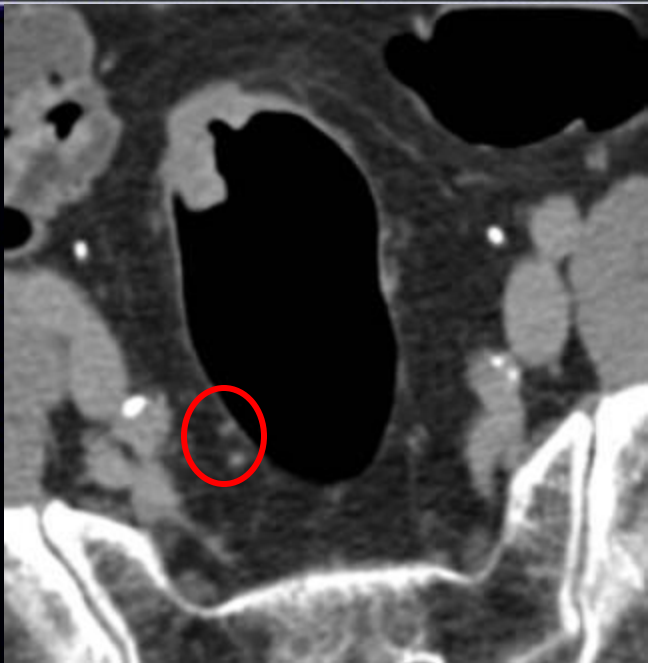


Tools	Image	View

Patient		



Recto-sigmoid Tumor Half Apple-core



Recto-sigmoid Tumor

Stage – T3, N1

Lymph nodes and
infiltration of the
mesenteric fat



Viewing

Filming

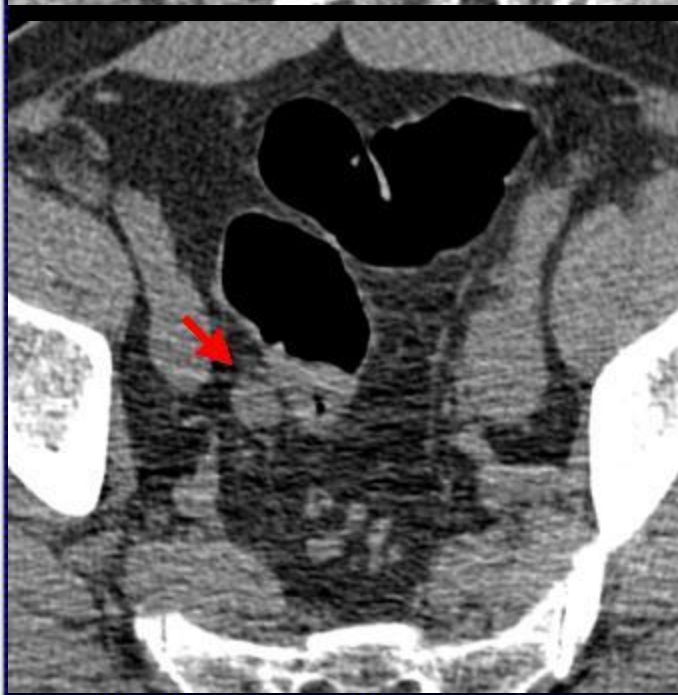
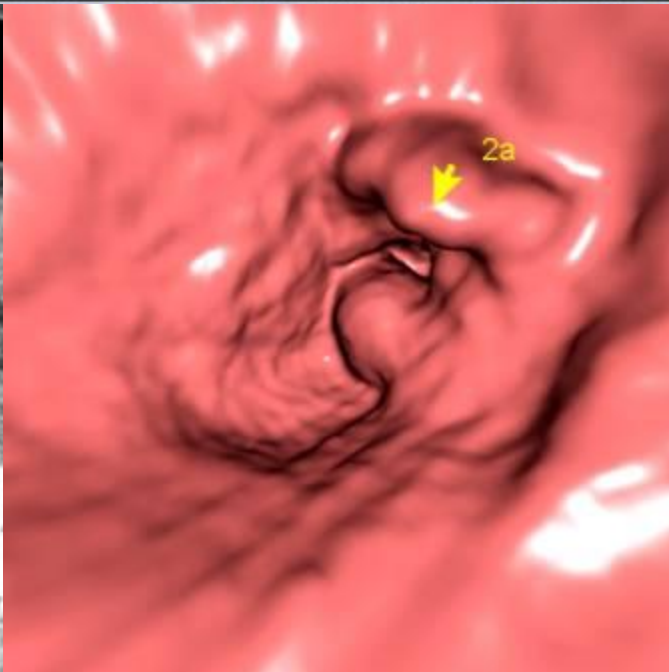
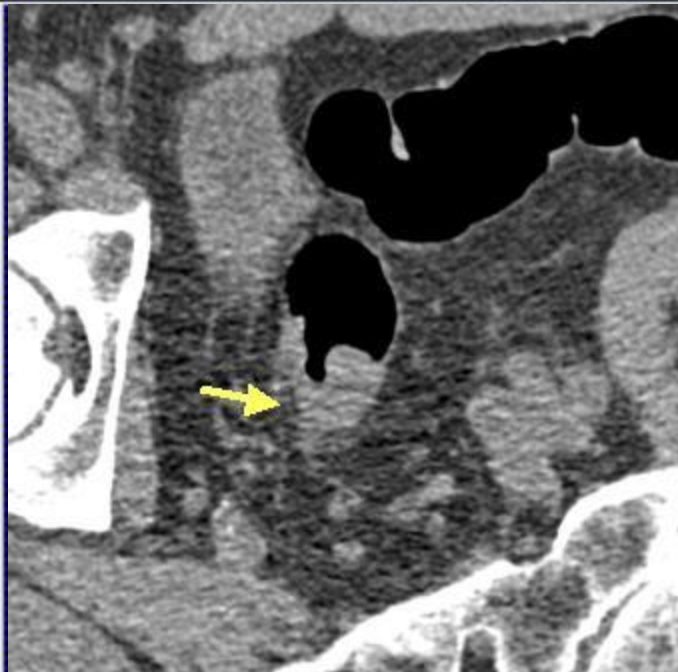
3D

Tools	Image	View

Patient		

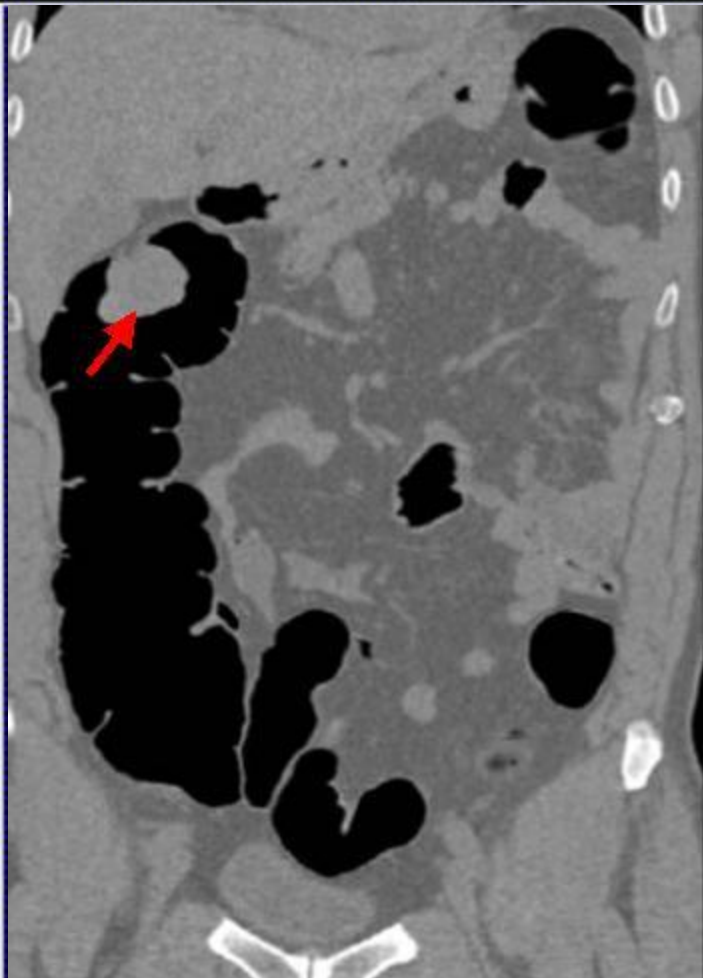


1st Tumor Rectum T3, N2



Tools	Image	View

Patient		



**Synchronous Tumor
Hepatic Flexure**



Tools	Image	View

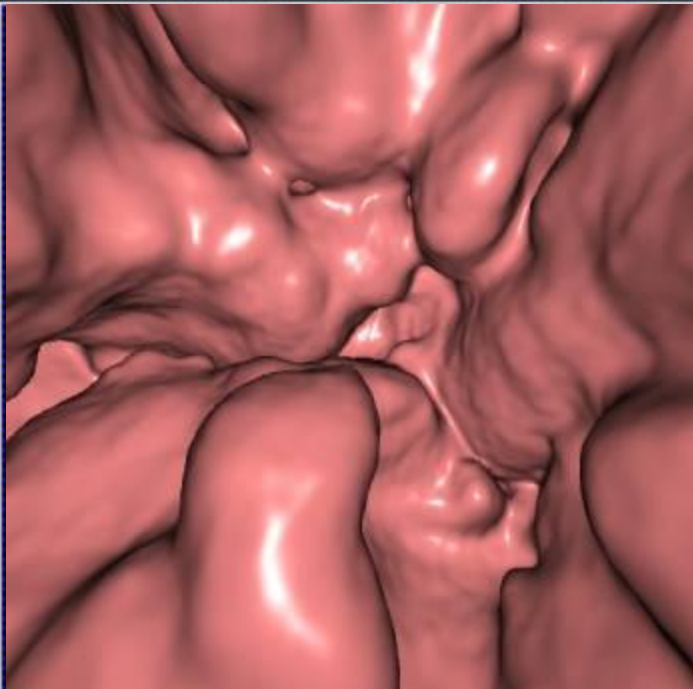
Patient		

Viewing

Filming

3D

Failed Colonoscopy Non-Hodgkin Lymphoma

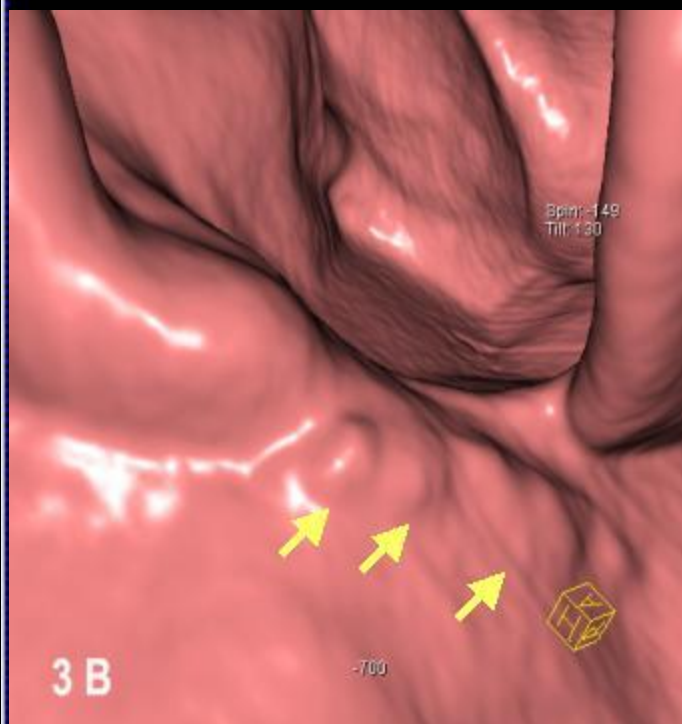


Tools	Image	View

Patient		



Flat lesion missed in CT Colonography



Tools	Image	View

Patient		

