

**Методическое пособие  
для детей и их родителей к УМК  
«RAINBOW ENGLISH» 2 класс  
О.В. Афанасьевой, И.В. Михеевой**



# Step 2.

Шаг 2.

# Алфавит

Aa



apple

Bb



bee

Cc



cat

Dd



dolphin

Ee



elephant

Ff



fish

Gg



giraffe

Hh



house

Ii



ice-cream

Jj



jelly

Kk



kite

Ll



ladybird

Mm



mouse

Nn



newt

Oo



octopus

Pp



pig

Qq



queen

Rr



rocket

Ss



snake

Tt



teddybear

Uu



umbrella

Vv



vase

Ww



whale

Xx



xylophone

Yy



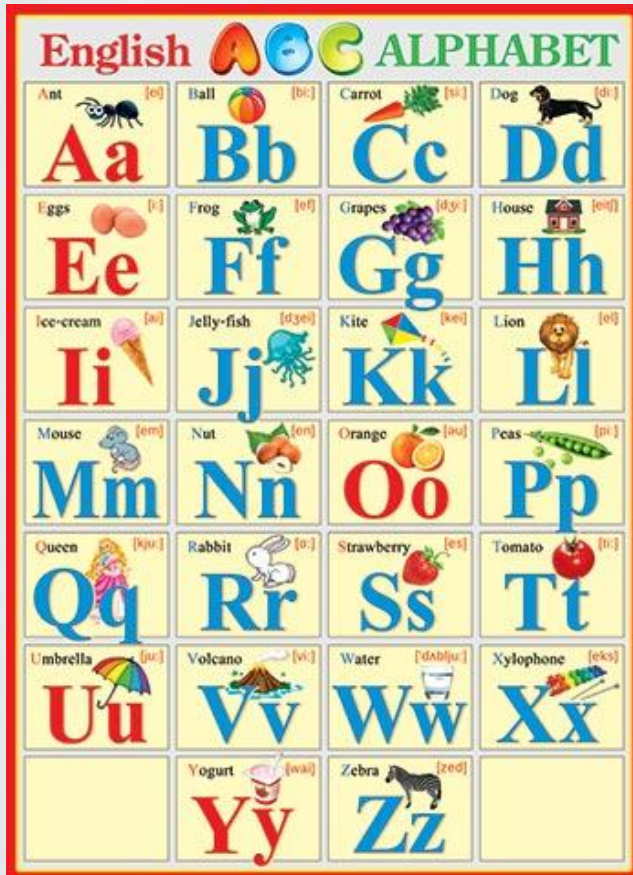
yo-yo

Zz



zebra

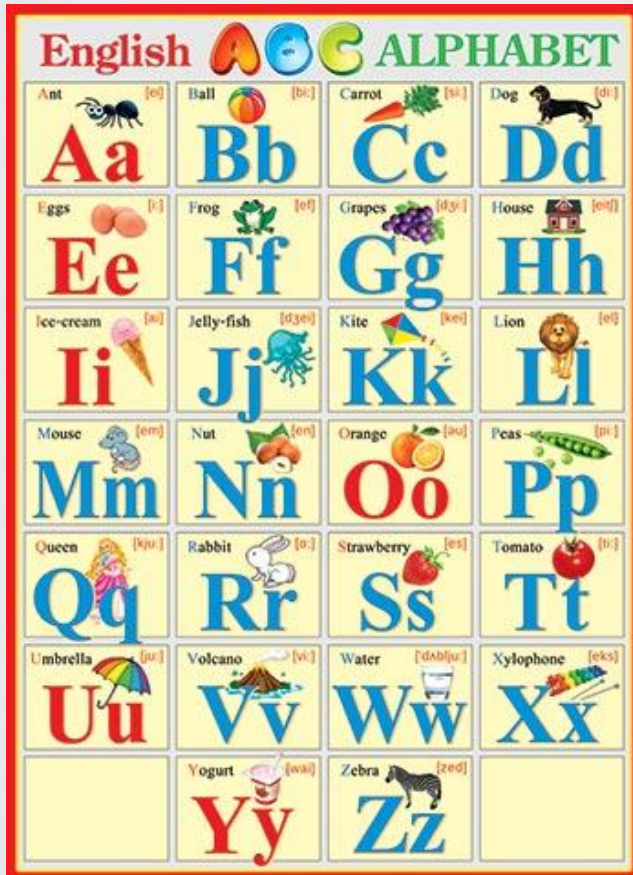
# Алфавит



26 букв



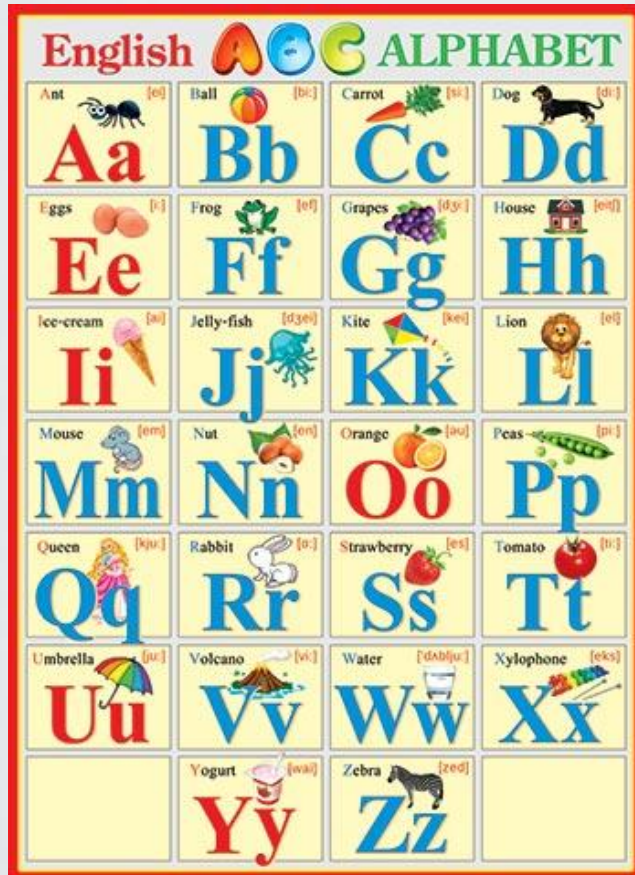
# Алфавит



26 букв

6 - гласных

# Алфавит



26 букв:

6 – гласных,

20- согласных



**Bb**

Letter (буква):

**Bb**

(би)

Sound (звук):

[b]

(б)



A vibrant, cartoon-style illustration of a zoo enclosure. In the center, a large yellow sign with a green border displays the letters 'Dd' in a bold, blue font. The enclosure is bordered by a wooden fence. Various animals are visible: a lion with a large orange mane on the left; two brown monkeys, one with its mouth open; a white panda with black eye patches; a tall yellow giraffe with brown spots; a brown teddy bear on the right; a zebra with black and white stripes; and a grey hippopotamus at the bottom right. A green crocodile is partially visible at the bottom left. The background features green trees and a blue sky with light rays.

**Dd**

**Letter (буква):**

**Dd**

**(ди)**

**Sound (звук):**

**[d]**

**(д)**

A vibrant, cartoon-style illustration of a zoo enclosure. In the center, a large yellow sign with a green border displays the letters 'Kk' in a bold, blue font. The sign is mounted on a wooden frame. Surrounding the sign are several animals: a lion with a large orange mane on the top left; two brown monkeys, one with its mouth open, on the top; a white panda with black eye patches on the top right; a tall yellow giraffe with brown spots on the top right; a brown bear on the right side; a zebra with black and white stripes on the right; and a grey hippopotamus with a red collar on the bottom right. At the bottom of the enclosure, a green crocodile is visible. The background features green trees and a blue sky with light rays.

**Letter (буква):**

**Кк**

**(кей)**

**Sound (звук):**

**[к]**

**(к)**





LI

**Letter (буква):**



**(эл)**

**Sound (звук):**



**(л)**



Mm

Letter (буква):

**Mm**

(эм)

Sound (звук):

**[m]** (M)



A vibrant, cartoon-style illustration of a zoo scene. In the center, a large yellow sign with a green border displays the letters 'Nn' in a bold, blue font. The sign is framed by a wooden border. Above the sign, a lion with a large orange mane, two brown monkeys, a white panda, and a yellow giraffe with brown spots are visible. To the right of the sign, a brown bear is peeking out from behind a green bush. Below the sign, a zebra with black and white stripes and a grey hippopotamus are also visible. In the foreground, a green crocodile is lying on the grass. The background features green trees and a blue sky with light rays.

**Letter (буква):**

**Nn**

**(ЭН)**

**Sound (звук):**

**[n]**

**(Н)**

A vibrant, cartoon-style illustration of a zoo enclosure. In the center, a large yellow sign with a green border displays the letters 'Ee' in a bold, red, sans-serif font. The sign is mounted on a wooden frame. Surrounding the sign are several animals: a lion with a large orange mane on the left; two brown monkeys, one with its mouth open, above the sign; a white panda with black markings on its face and ears; a tall yellow giraffe with brown spots on the right; a brown teddy bear peeking from behind the sign; a zebra with black and white stripes; and a grey hippopotamus with a red collar and tusks at the bottom right. In the bottom left corner, a green crocodile is partially visible. The background features stylized green trees and a blue sky with light rays.

**Letter (буква):**

**Е е**

**(и)**

**Sound (звук):**

**[e]**

**(э)**