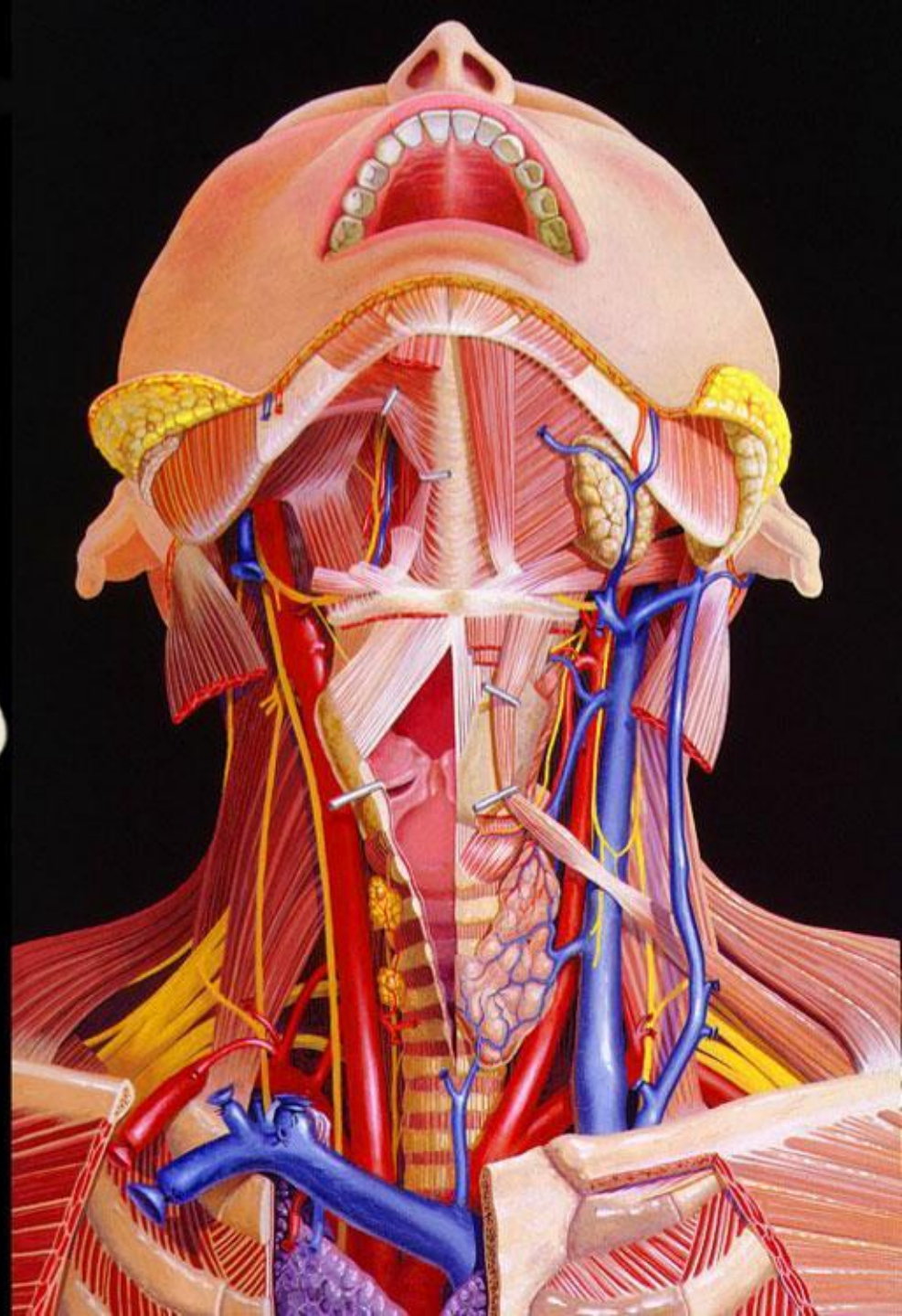
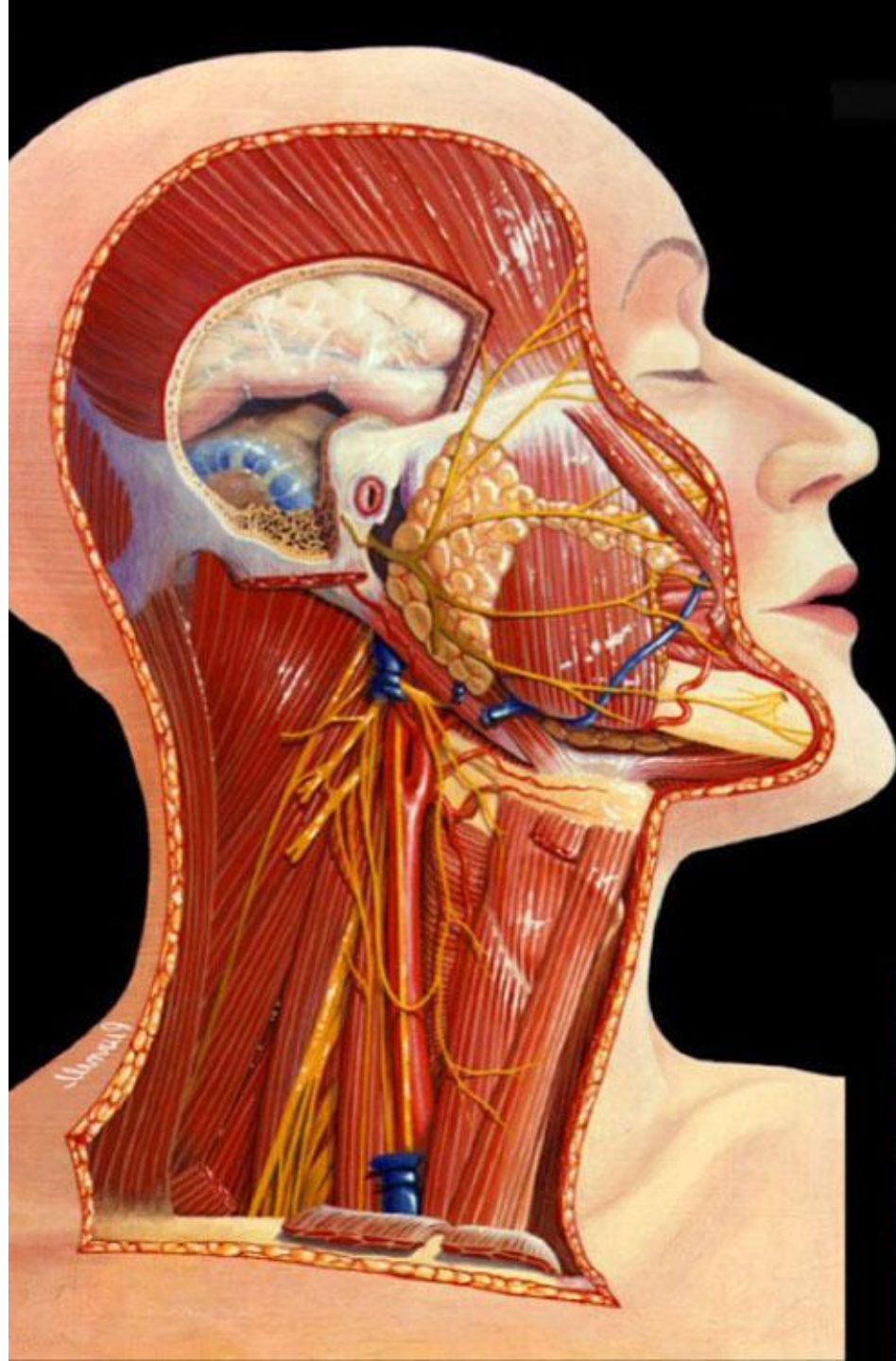
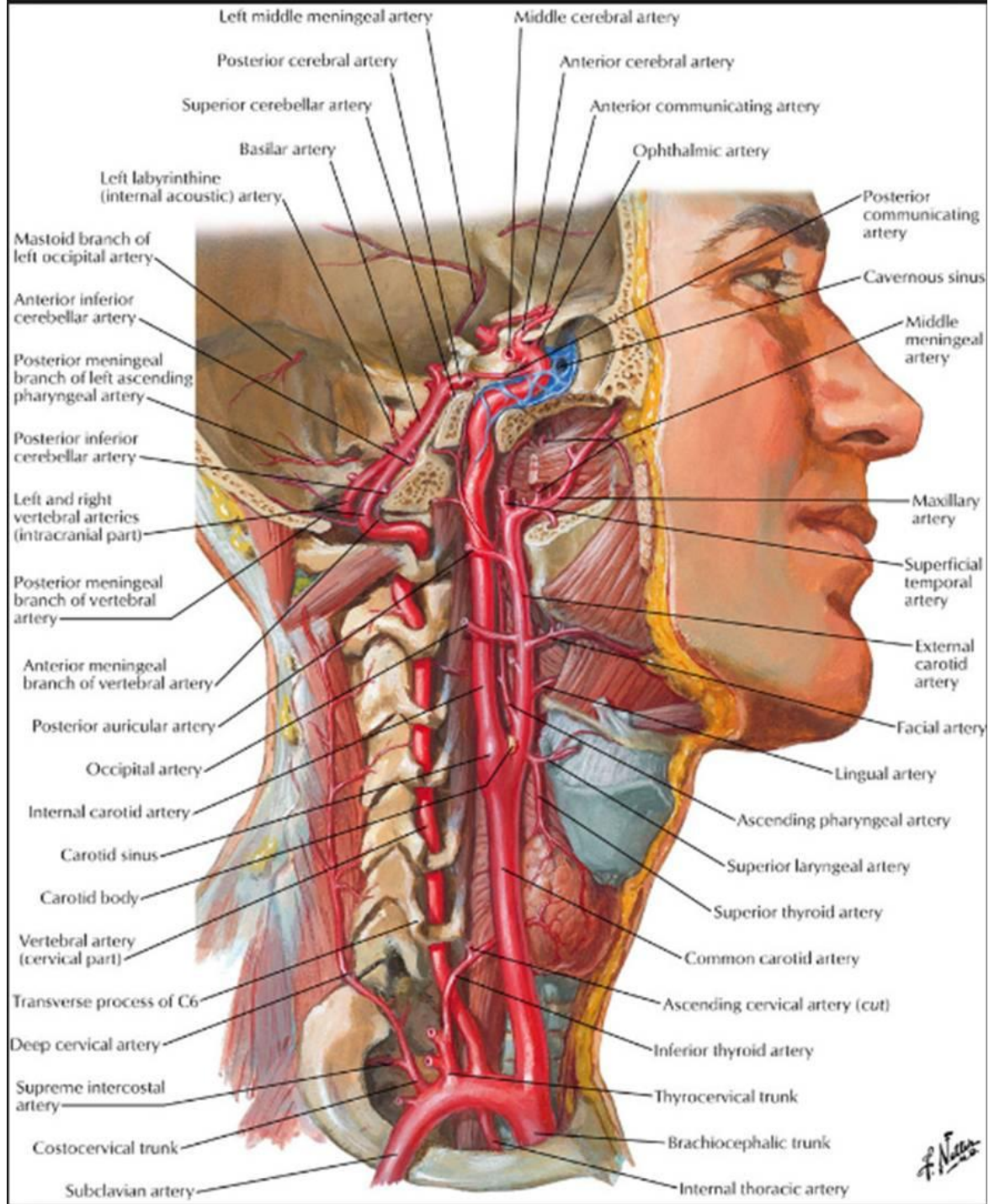


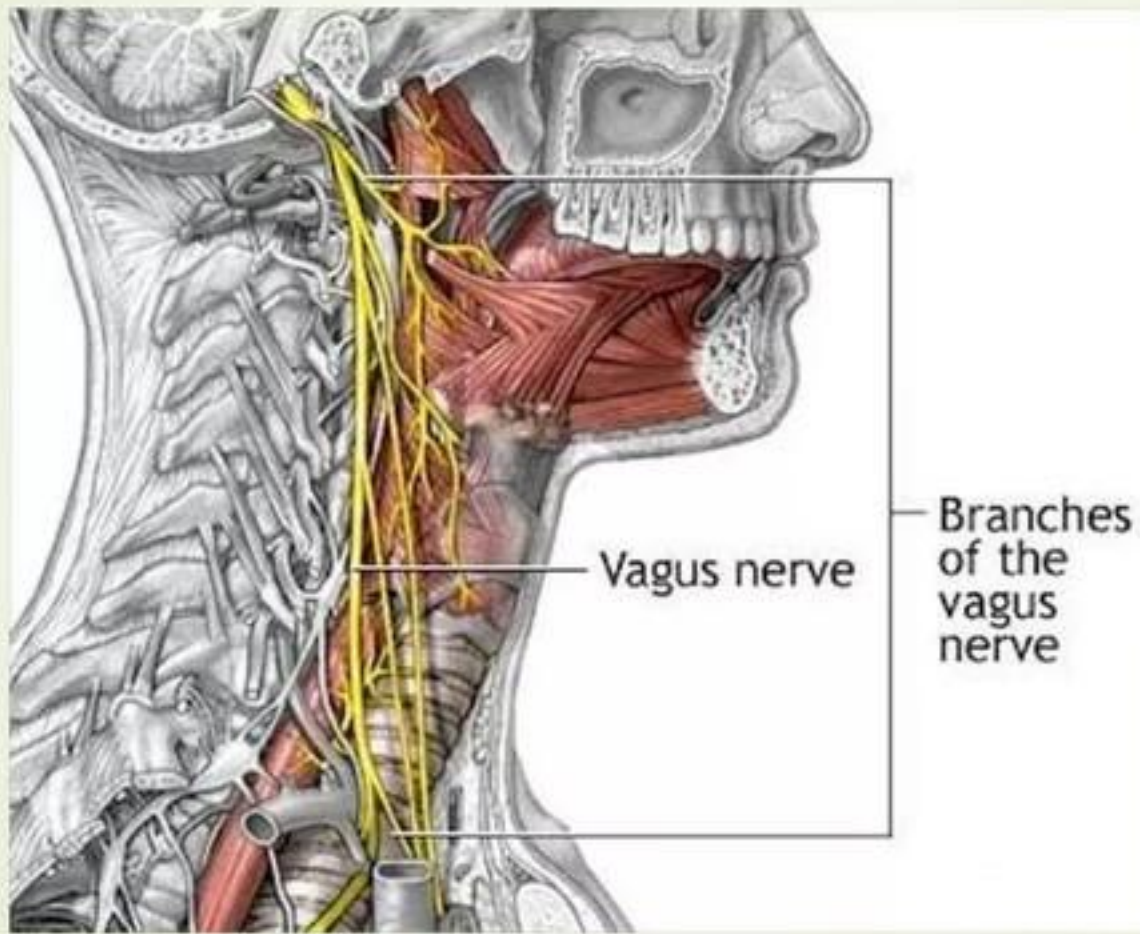


Внутренние органы

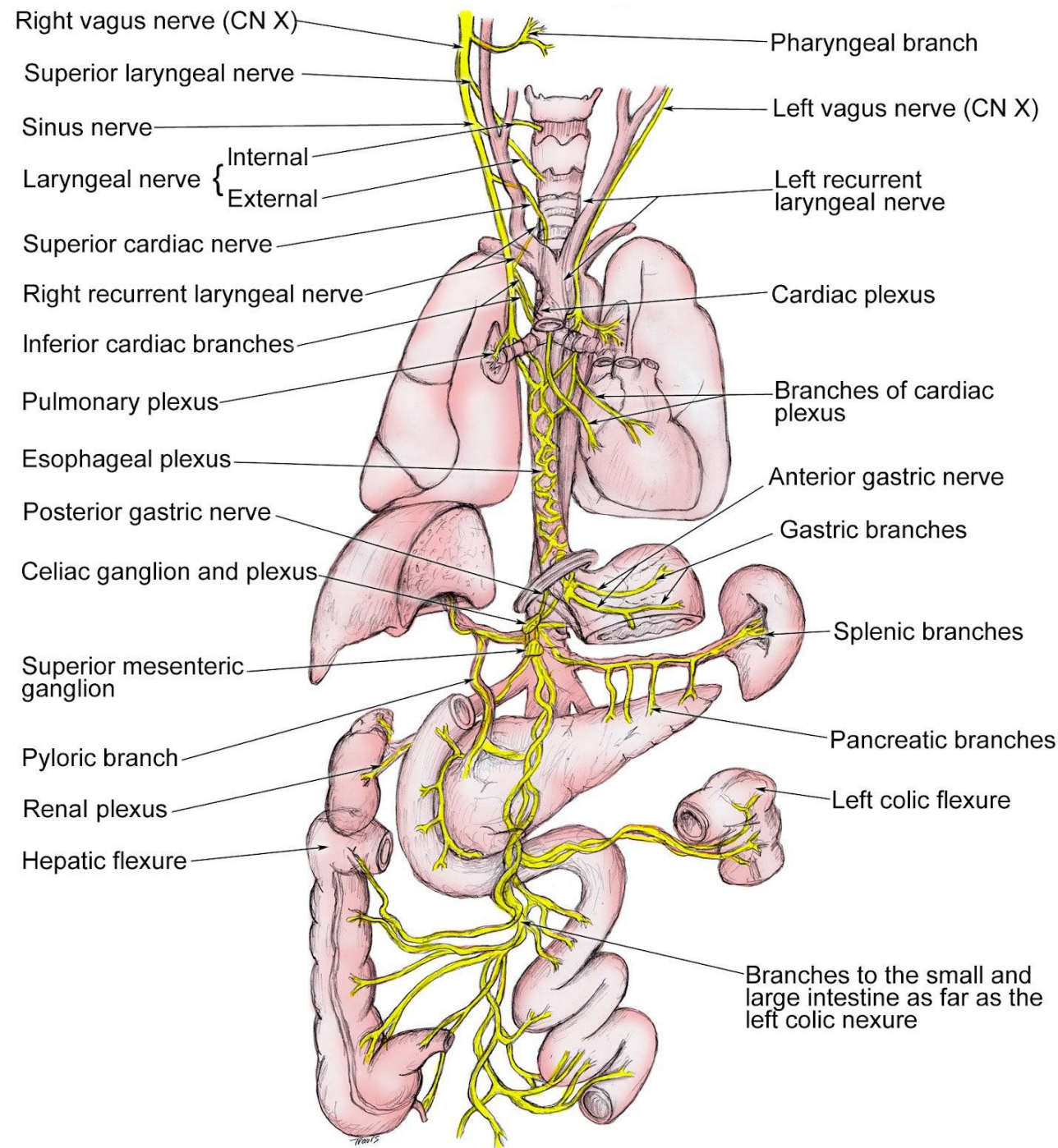


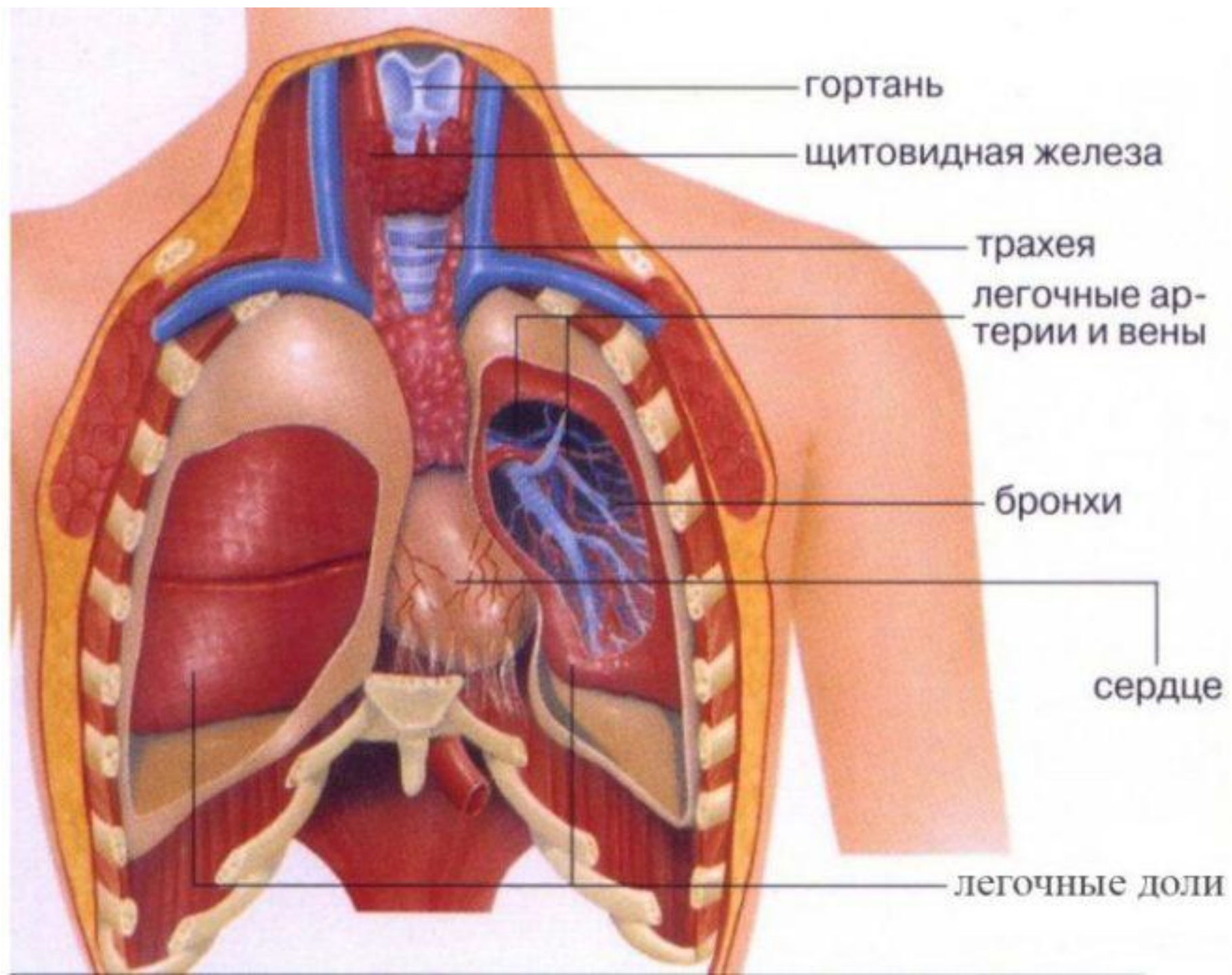


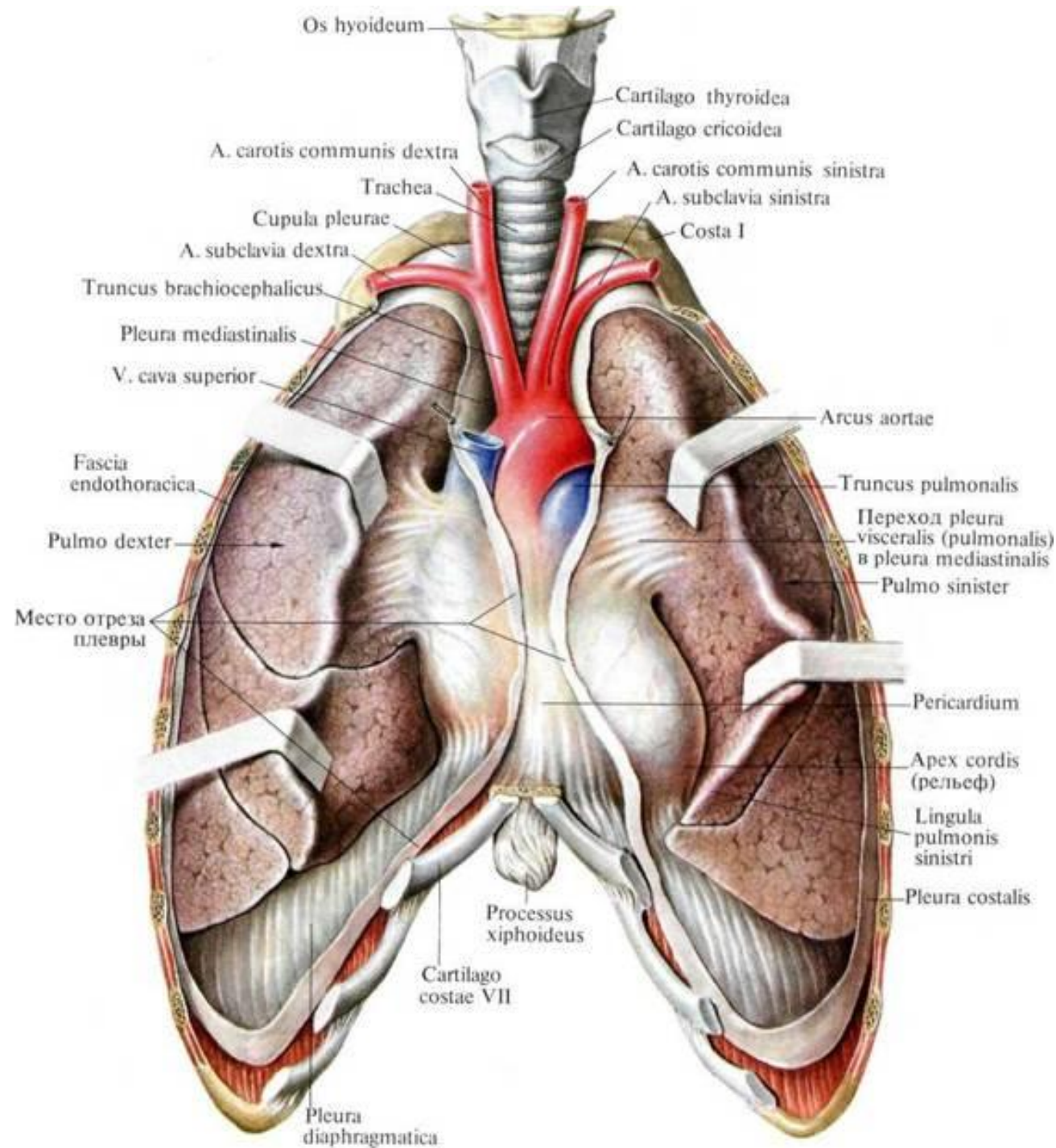
Блуждающий нерв

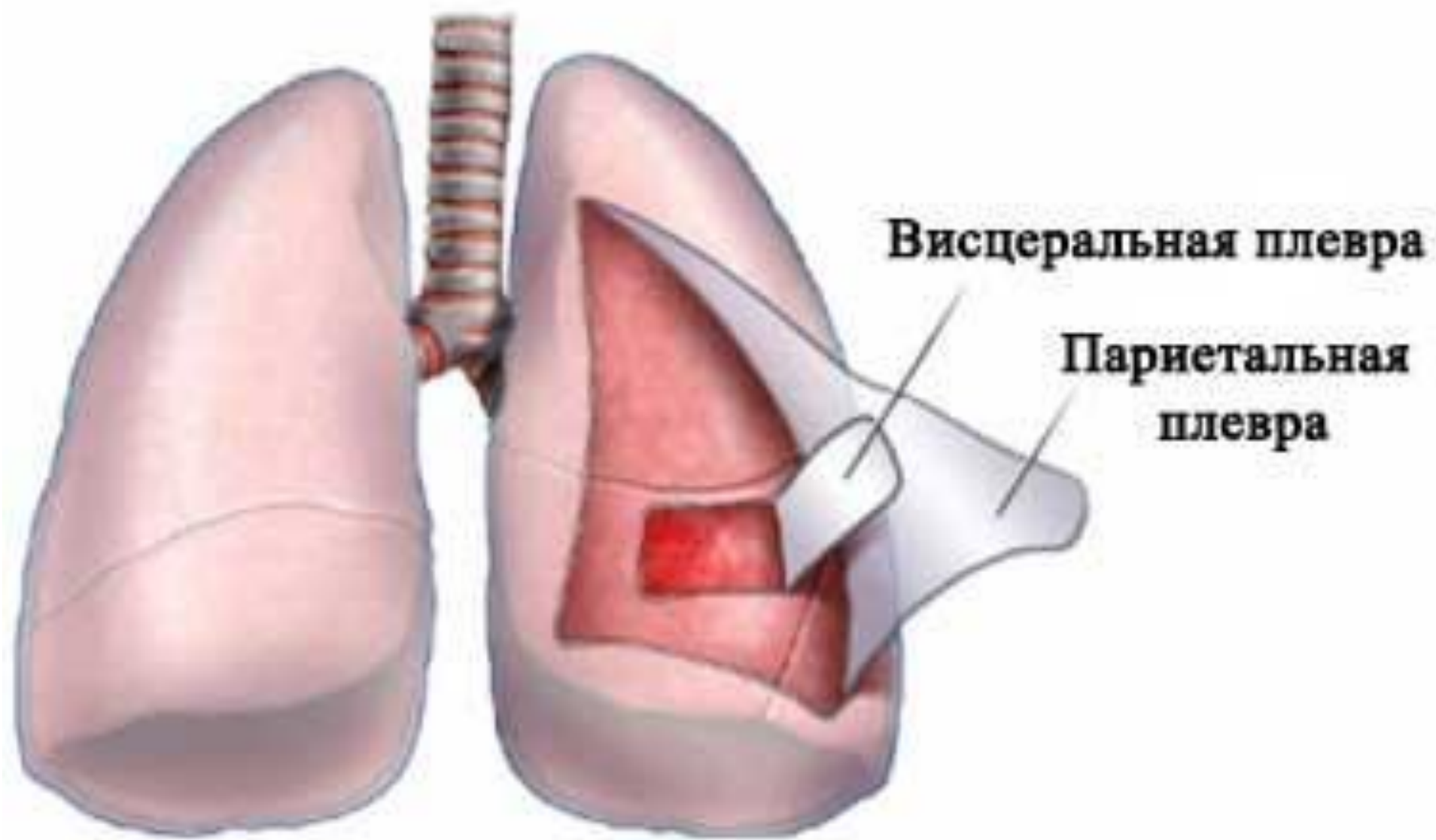


У блуждающего нерва можно выделить 4 отдела: головной, шейный, грудной и брюшной.

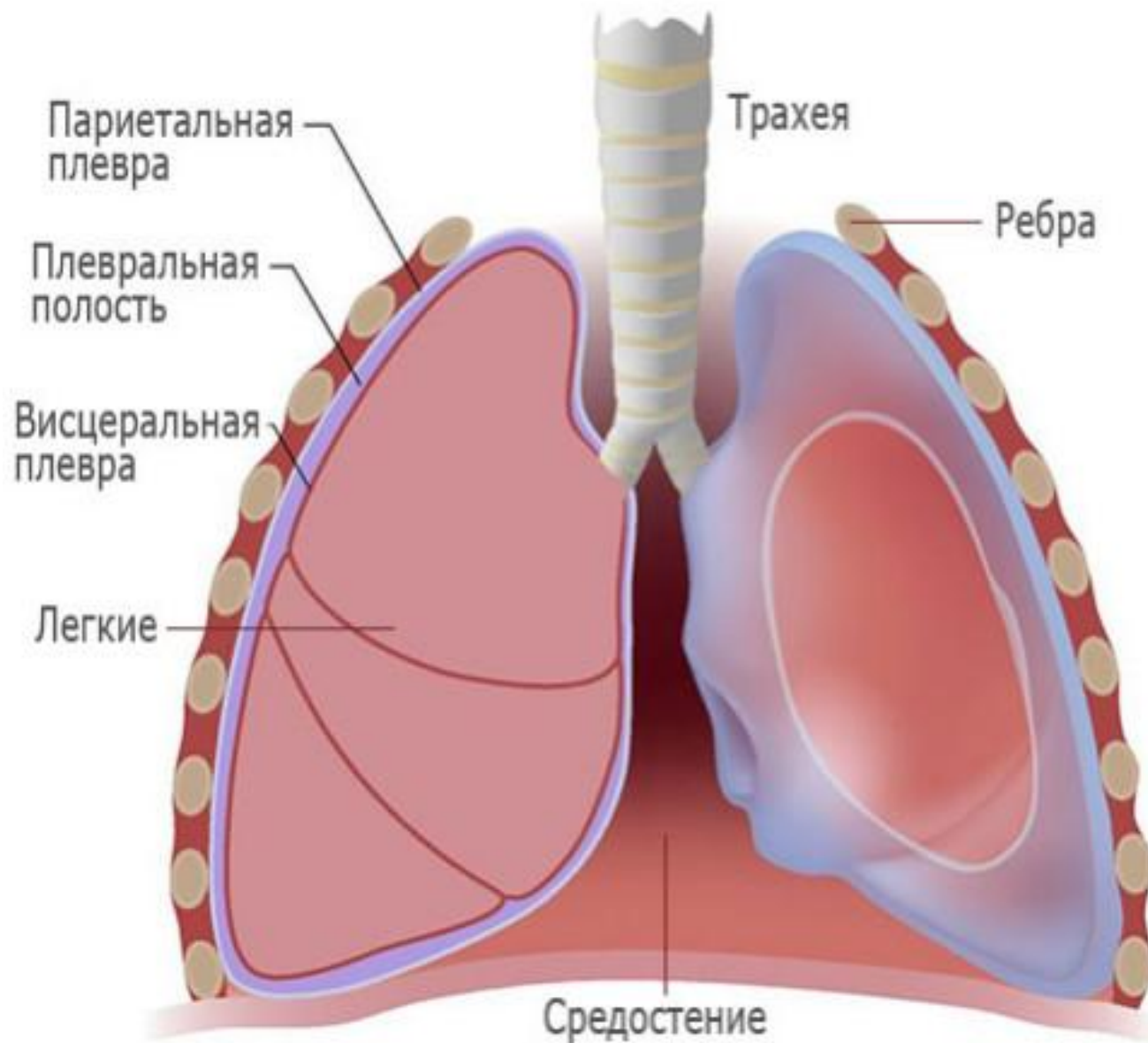


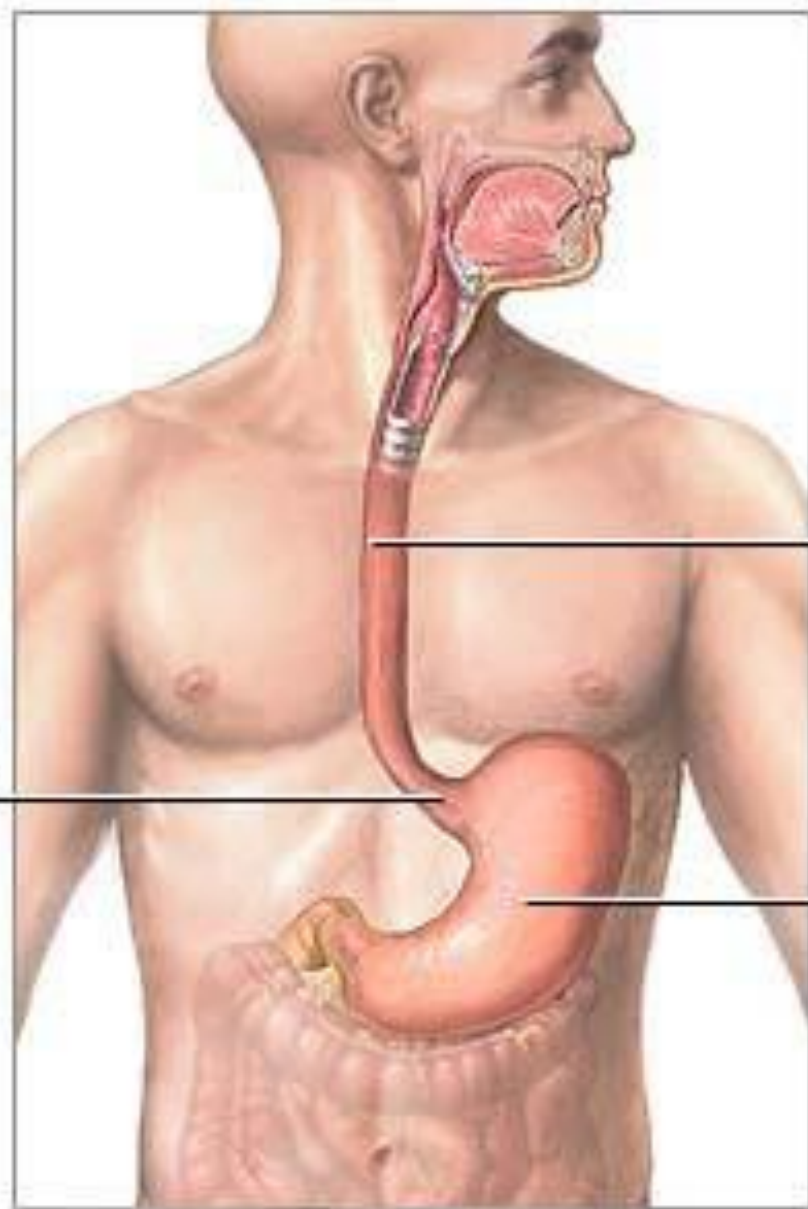






Плевра

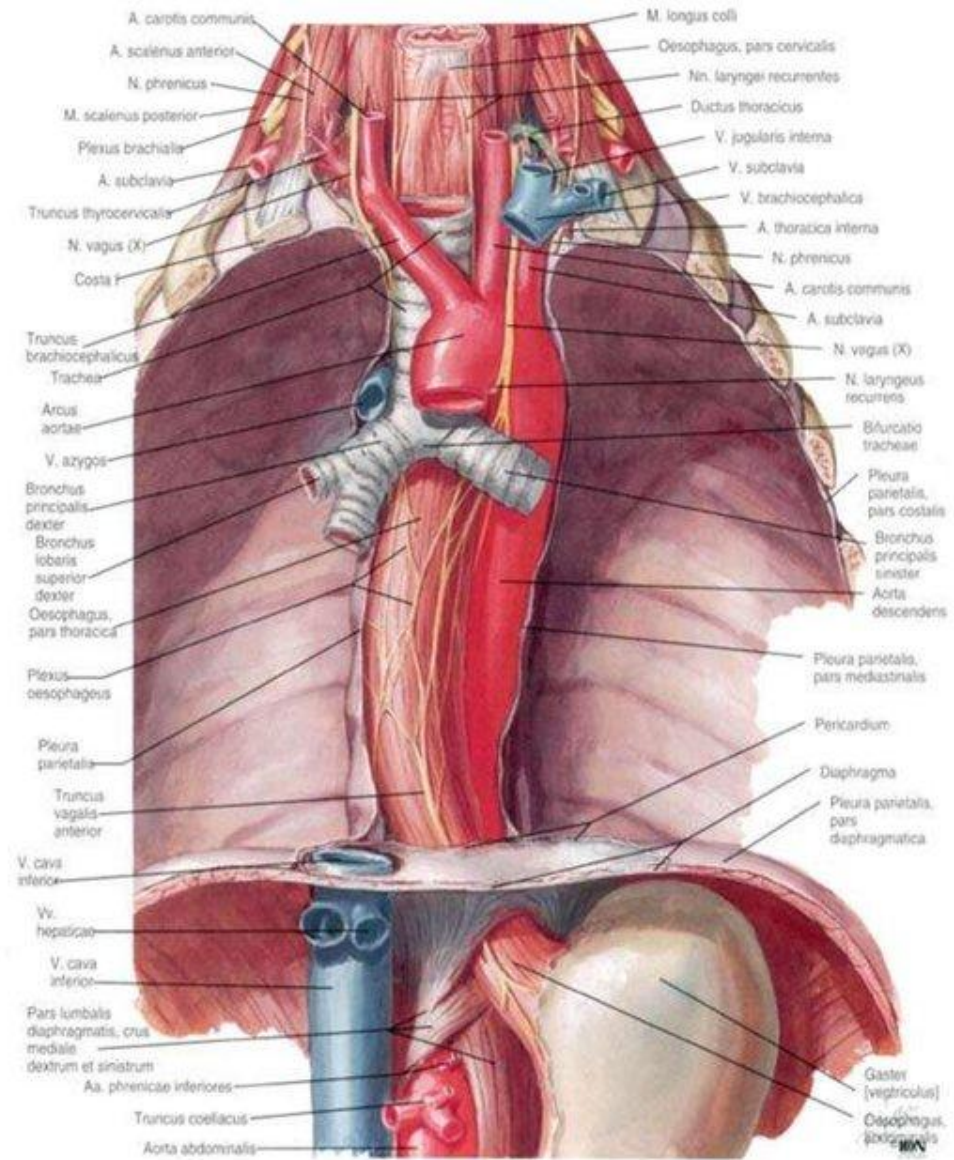


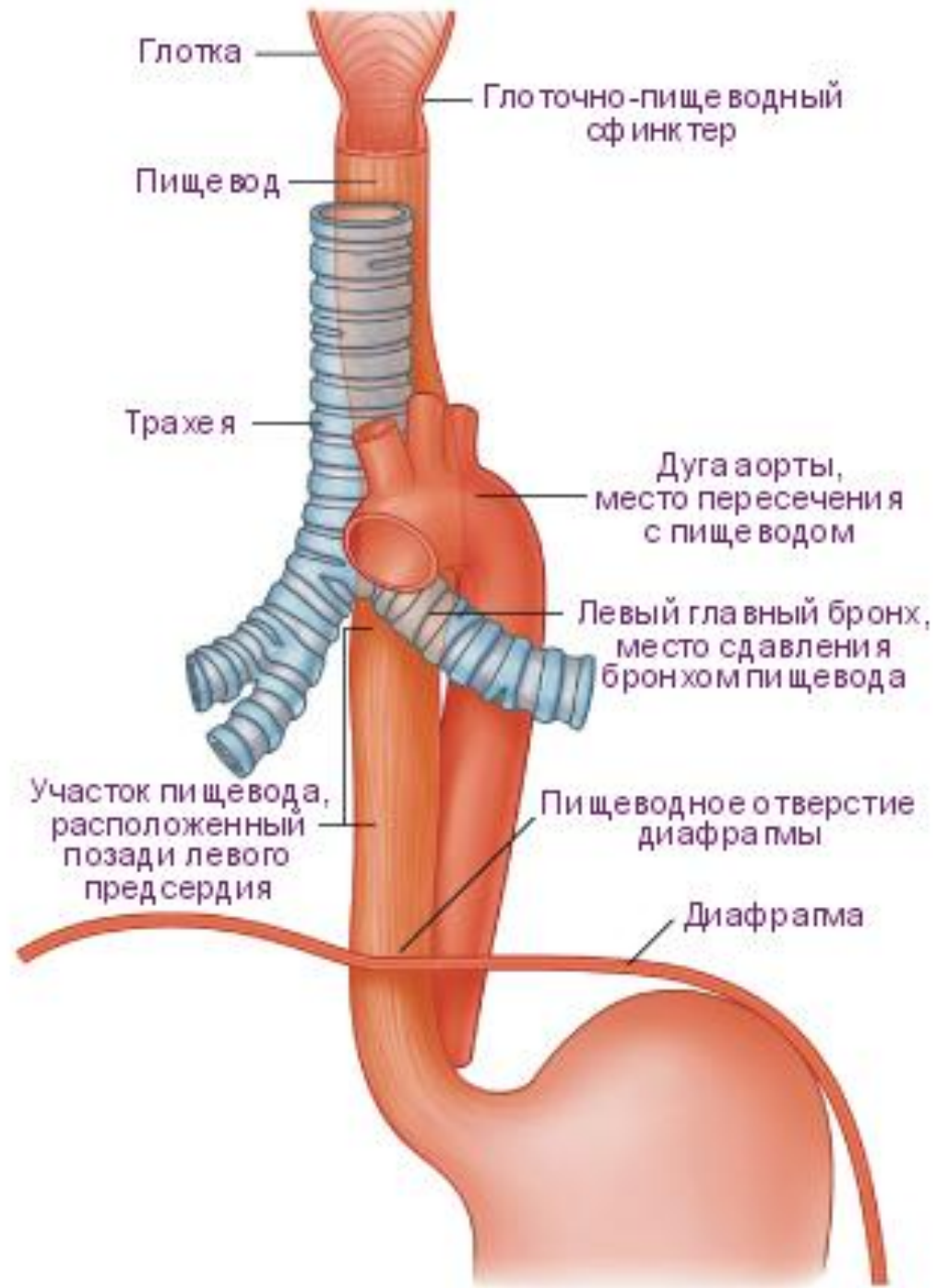


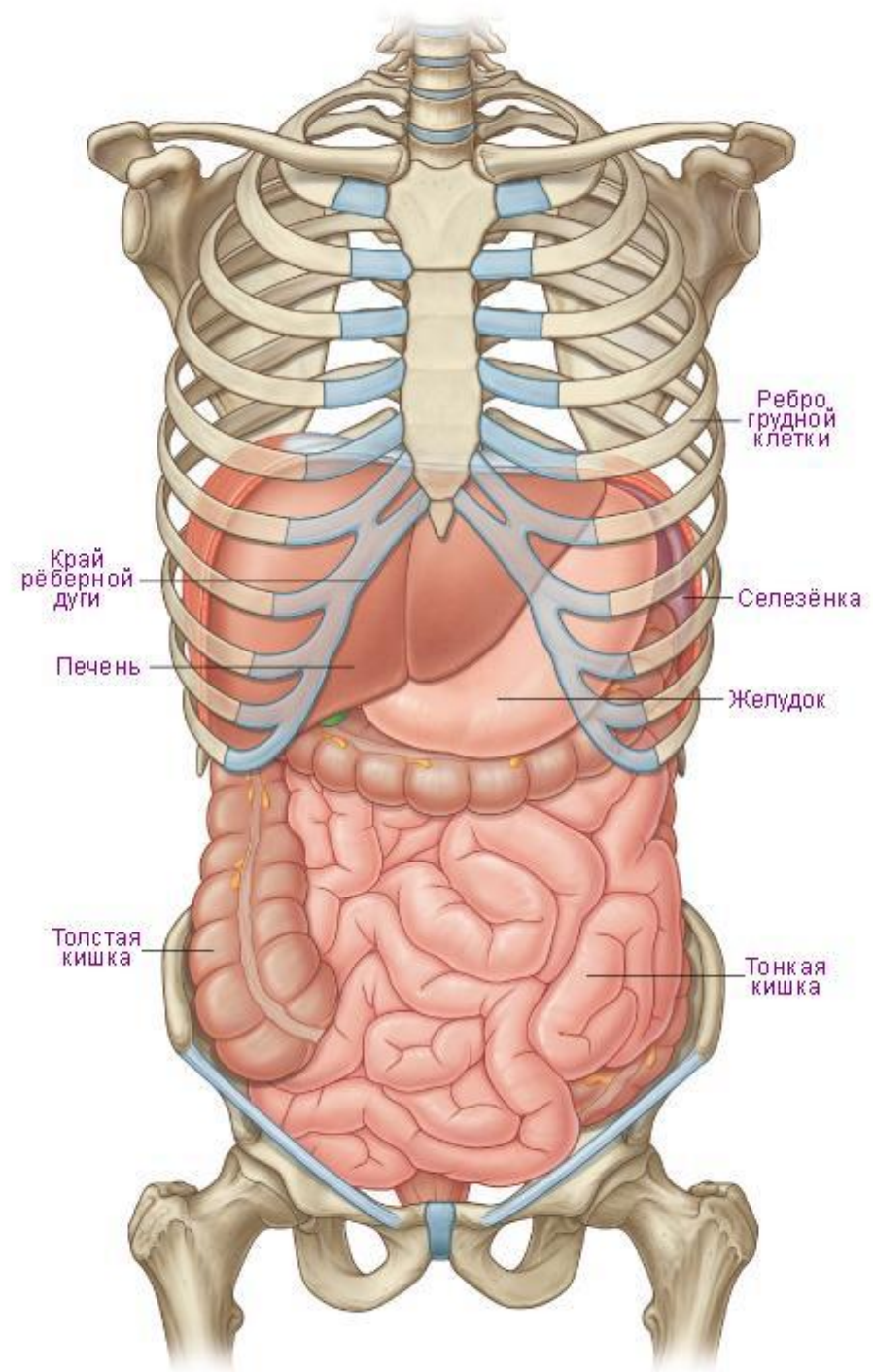
Пищевод

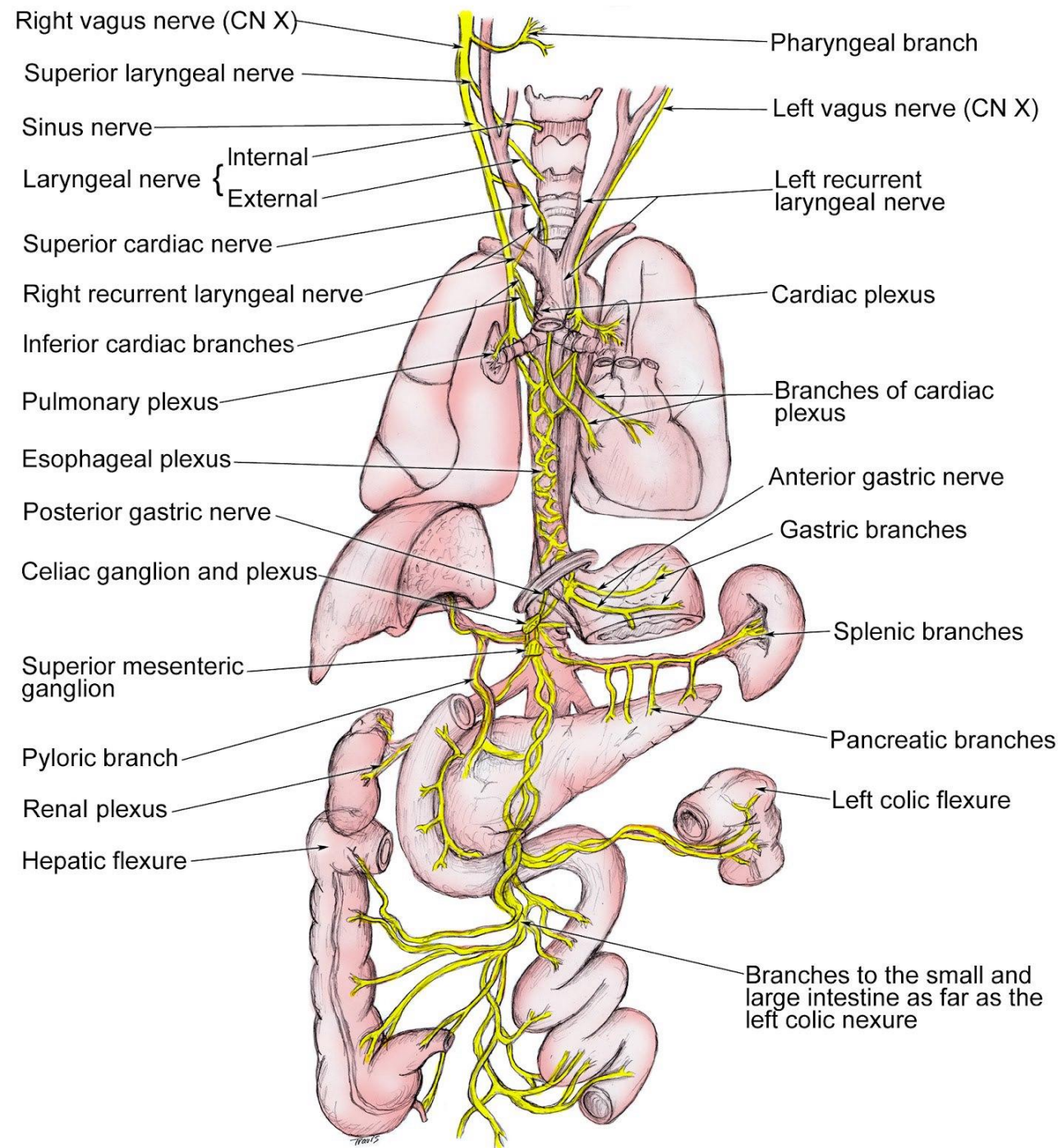
Сфинктер
желудка

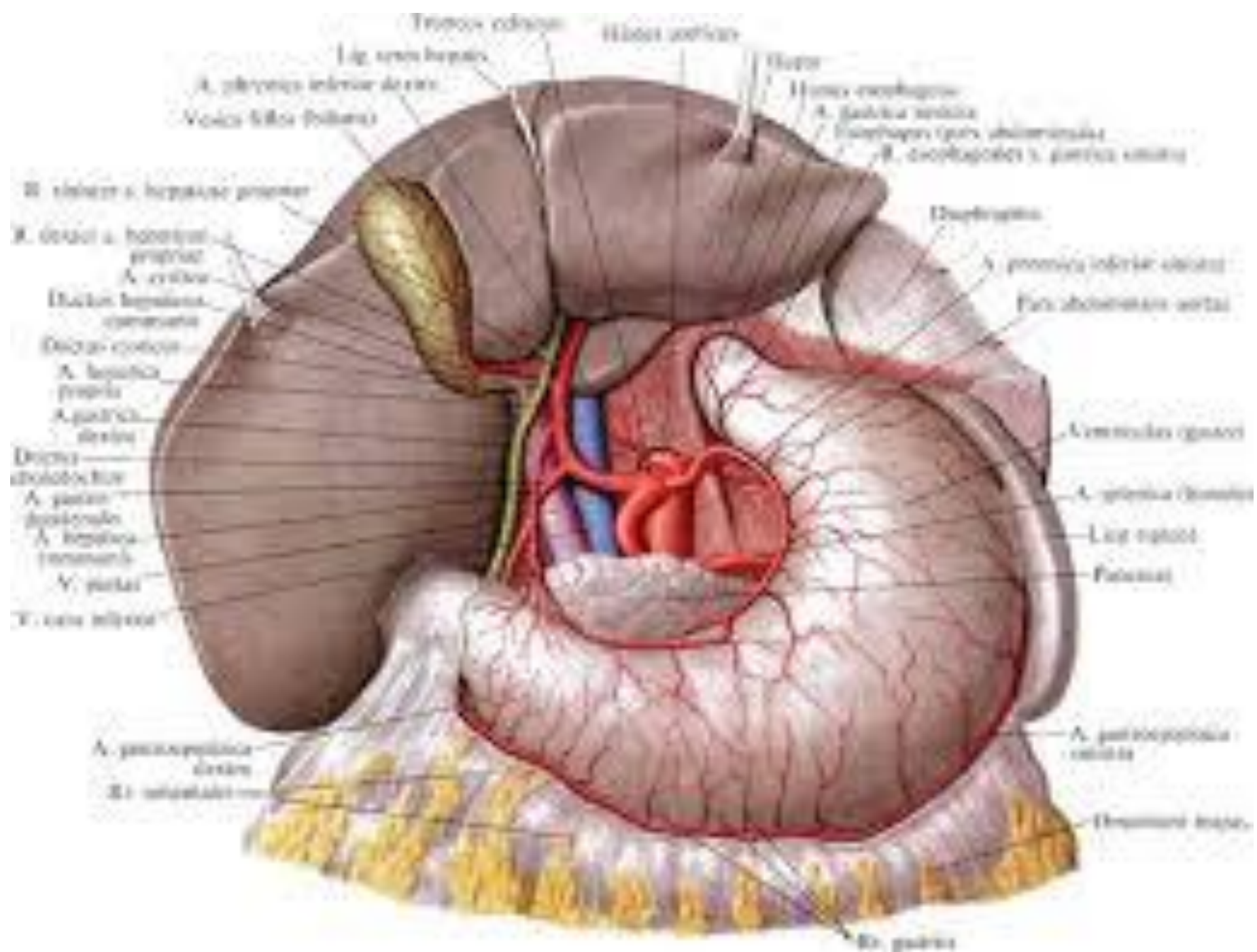
Желудок

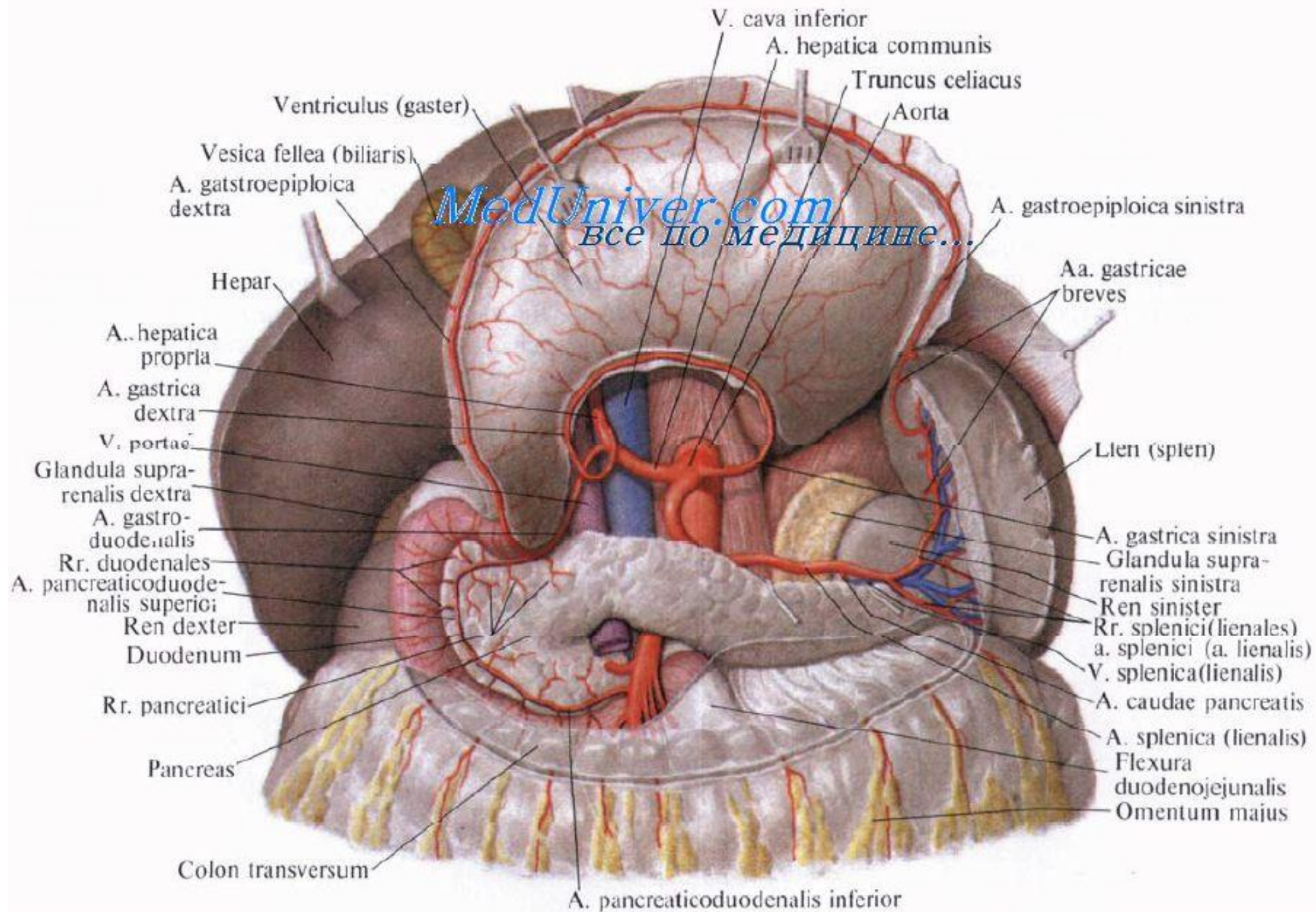


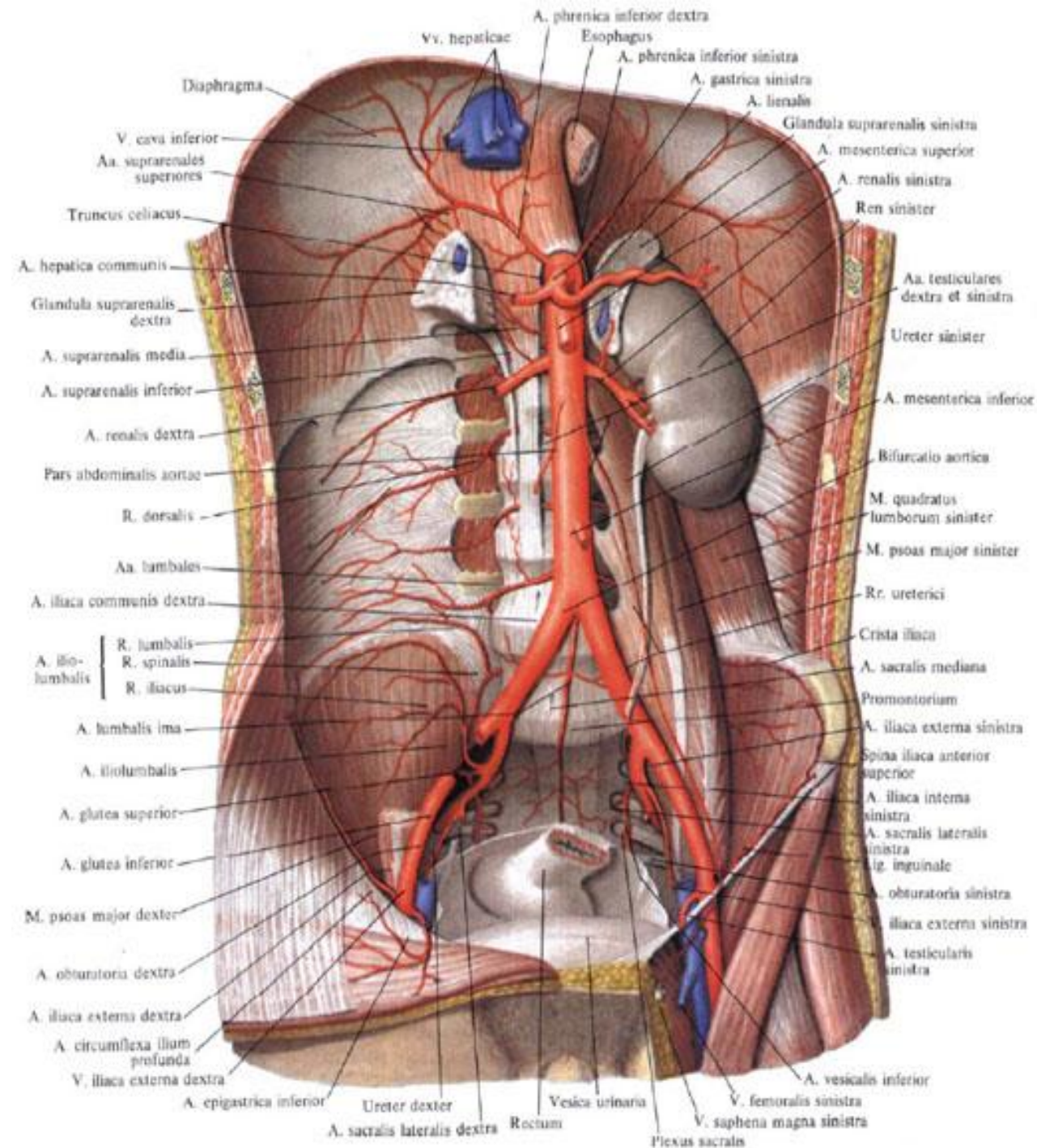


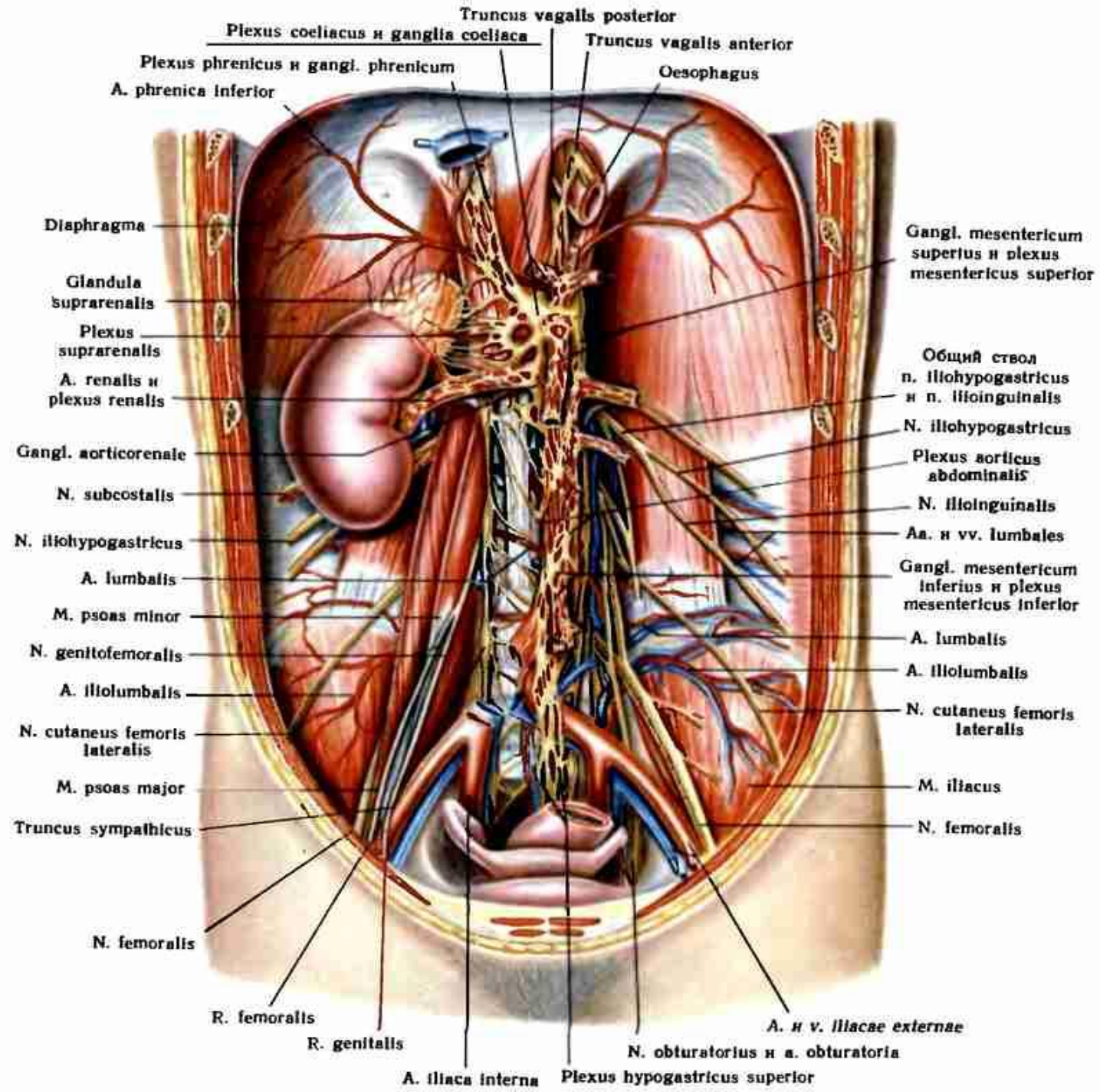












Plexus coeliacus et ganglia coeliaca

Truncus vagalis posterior

Plexus phrenicus et gangl. phrenicum

Truncus vagalis anterior

Oesophagus

A. phrenica inferior

Diaphragma

Glandula suprarenalis

Plexus suprarenalis

A. renalis et plexus renalis

Gangl. aorticorenale

N. subcostalis

N. iliohypogastricus

A. lumbalis

M. psoas minor

N. genitofemoralis

A. iliolumbalis

N. cutaneus femoris lateralis

M. psoas major

Truncus sympathicus

N. femoralis

R. femoralis

R. genitalis

A. iliaca interna

Plexus hypogastricus superior

Gangl. mesentericum superius et plexus mesentericus superior

Общій ствол n. iliohypogastricus et n. ilioinguinalis

N. iliohypogastricus

Plexus aorticus abdominalis

N. ilioinguinalis

Aa. et vv. lumbales

Gangl. mesentericum inferius et plexus mesentericus inferior

A. lumbalis

A. iliolumbalis

N. cutaneus femoris lateralis

M. iliacus

N. femoralis

A. et v. iliacae externae

N. obturatorius et a. obturatoria

