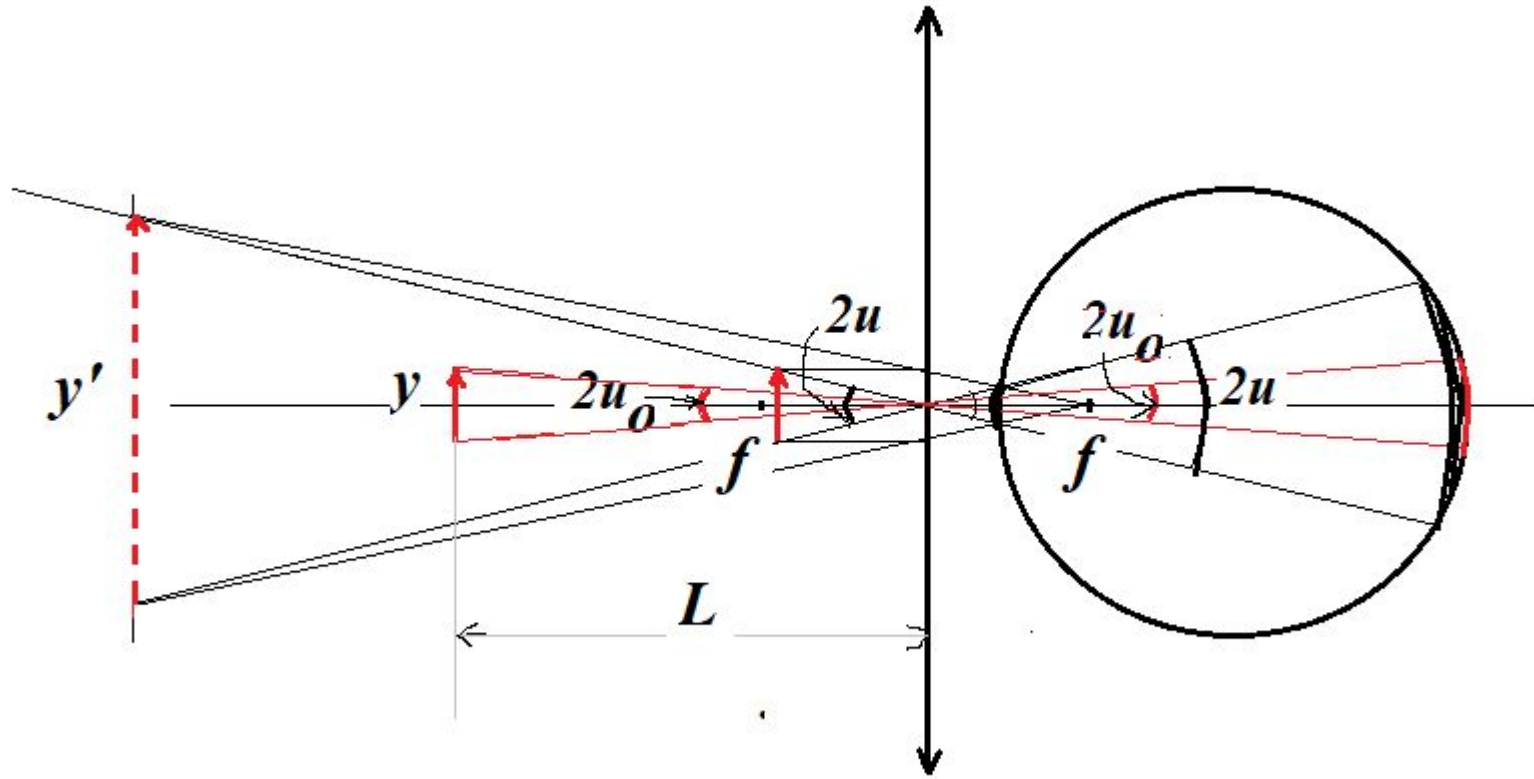


# Простейшие оптические приборы

**Глаз.**

$$\frac{1}{a} + \frac{n}{b} = \frac{n}{f}$$

# Лупа.

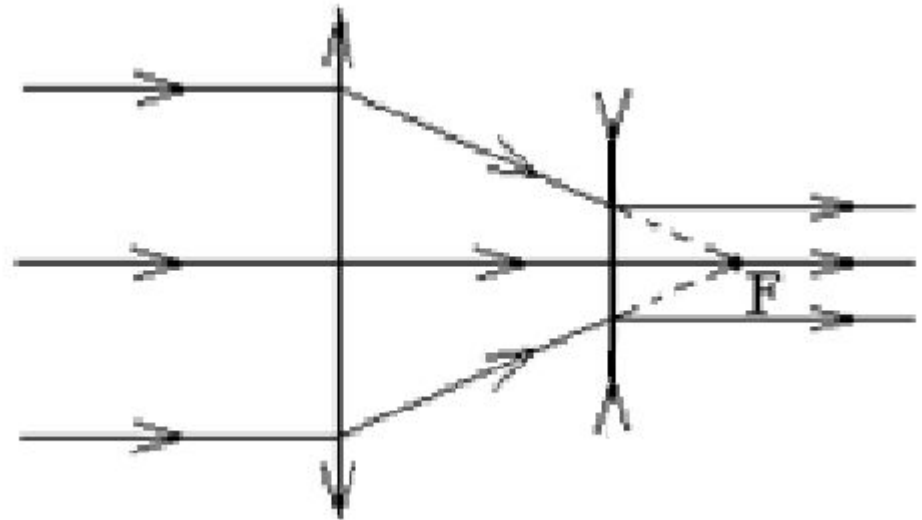
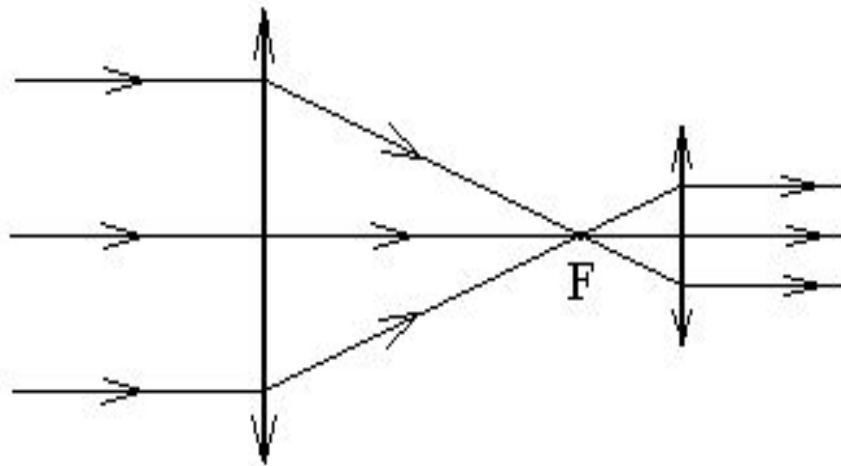


$$2u = \frac{y}{f}$$

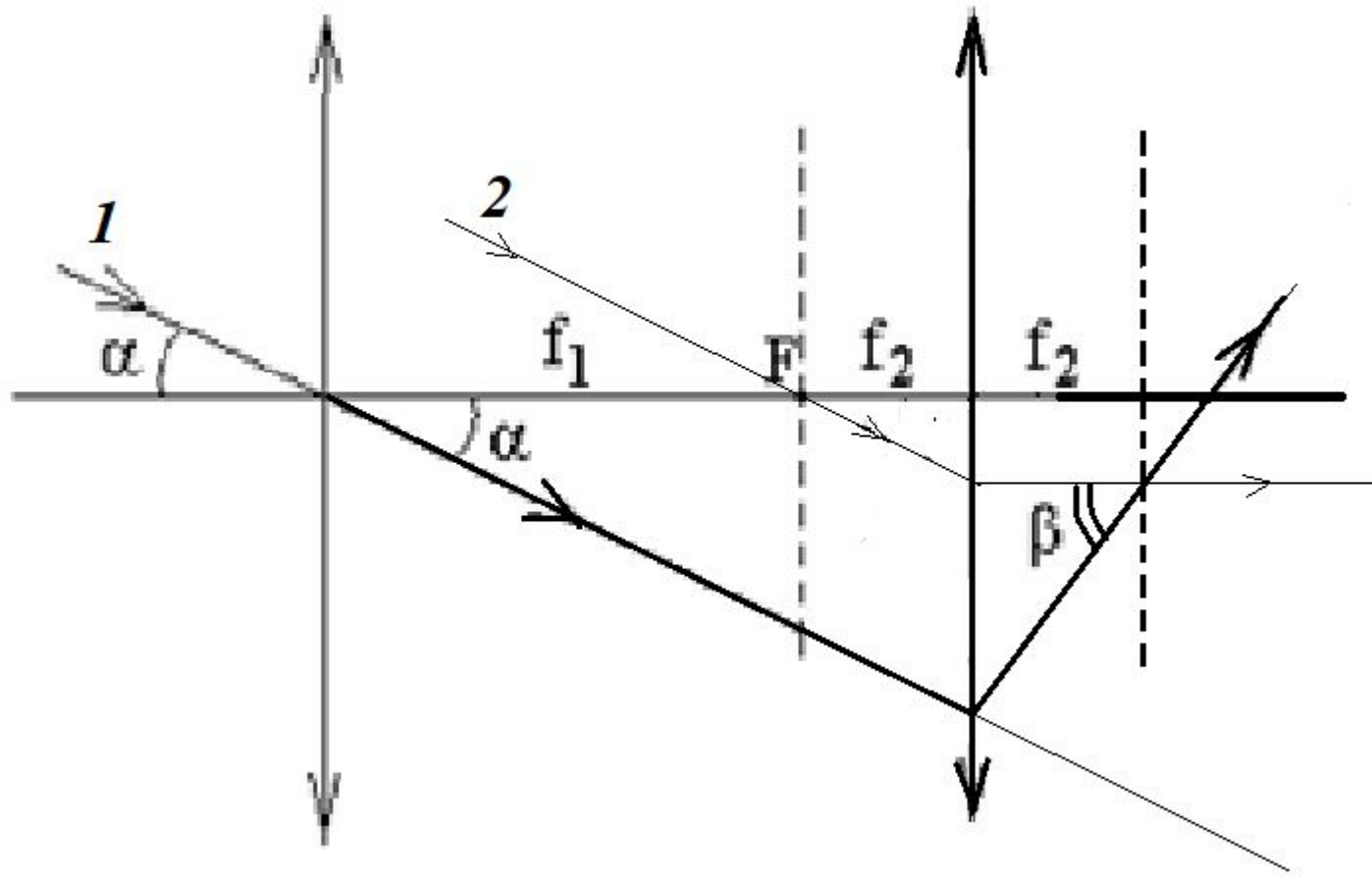
$$2u_0 = \frac{y}{L}$$

$$\gamma = \frac{2u}{2u_0} = \frac{yL}{fy} = \frac{L}{f} = \frac{25}{2,5}$$

**Подзорная труба или телескоп.**



## Угловое увеличение телескопа



$$f_1 \alpha = f_2 \beta$$

$$\frac{\beta}{\alpha} = \frac{f_1}{f_2}$$

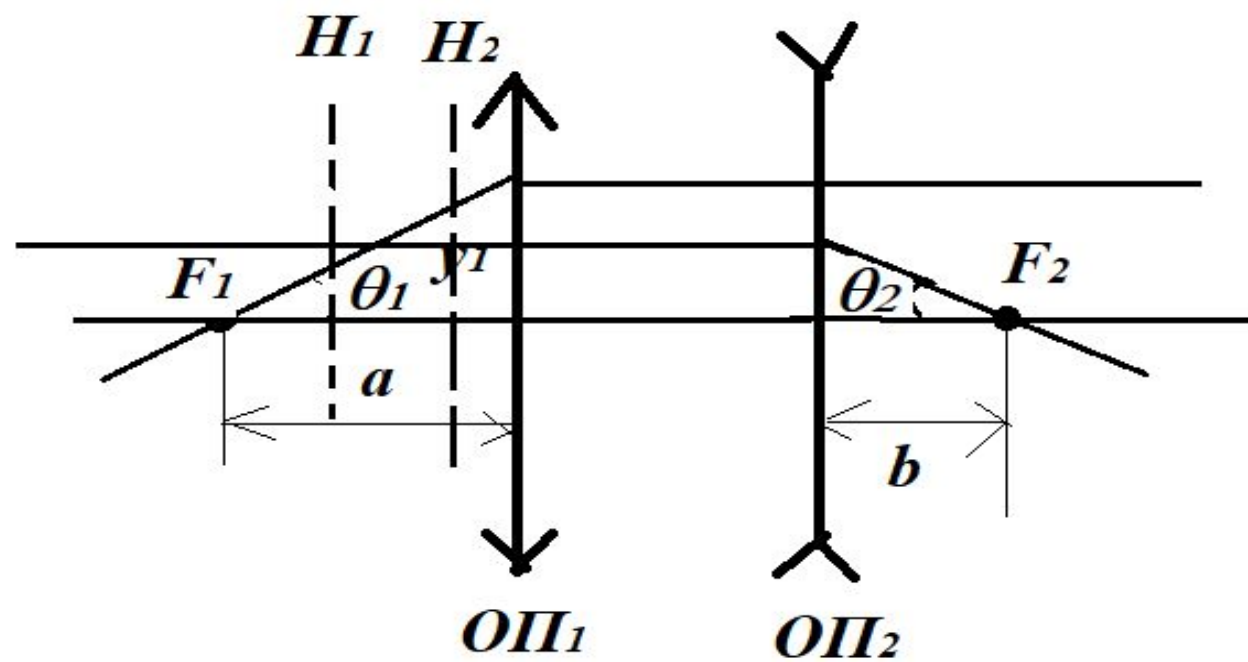


Рис.9.