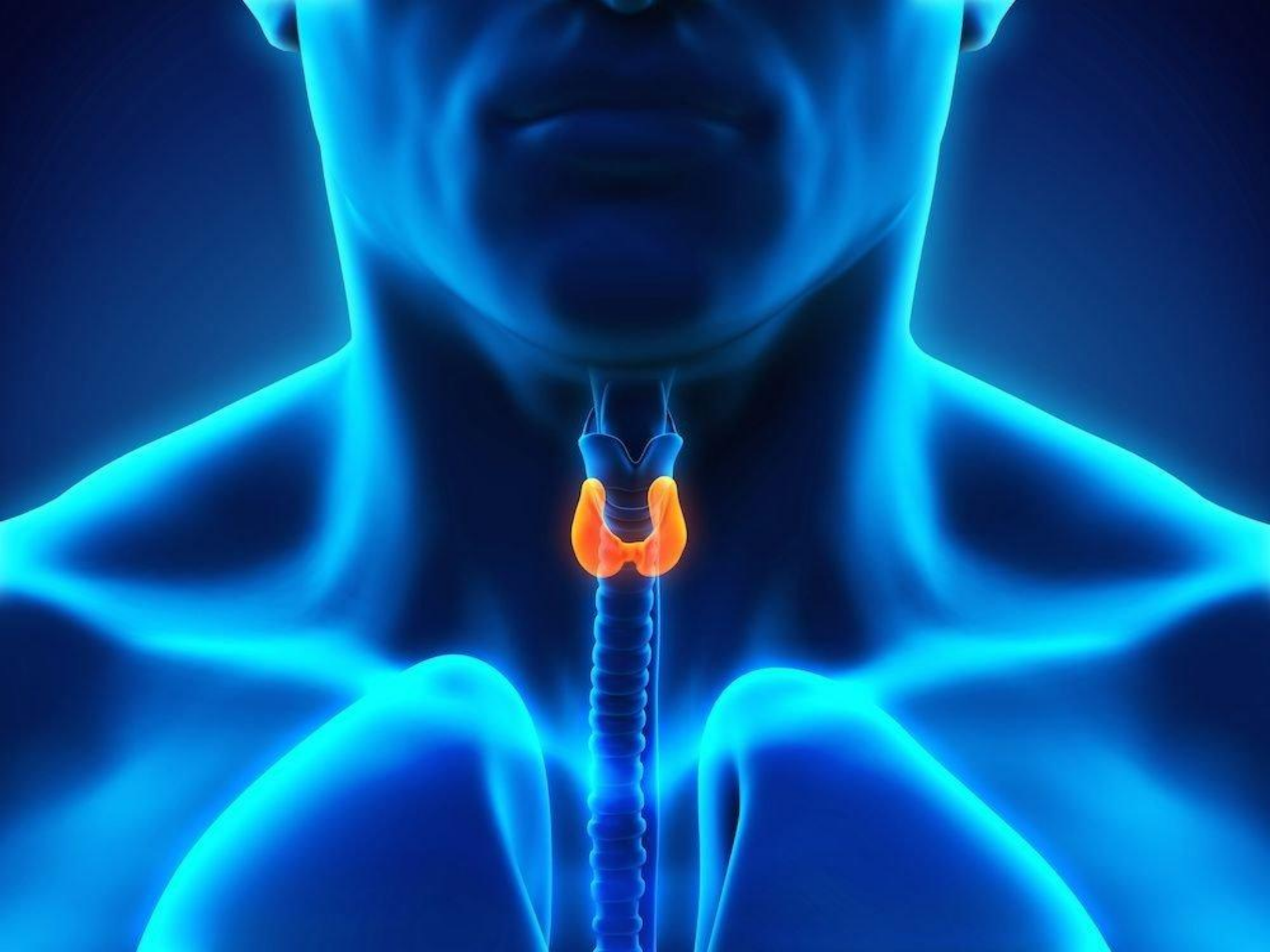


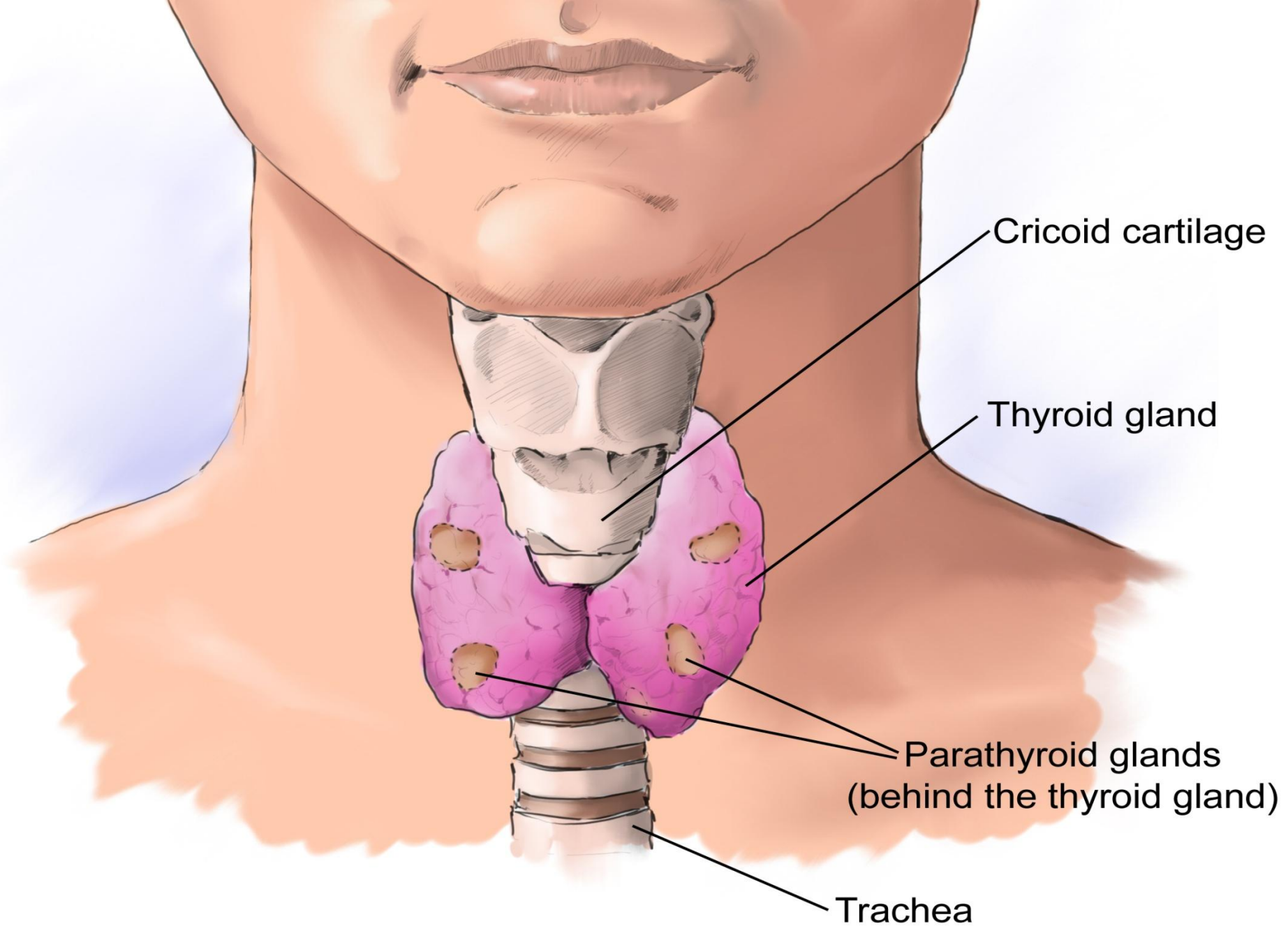
# Thyroid Essentials

Performed:  
Nadya Egizbaeva  
Student of the faculty  
Of pharmacy



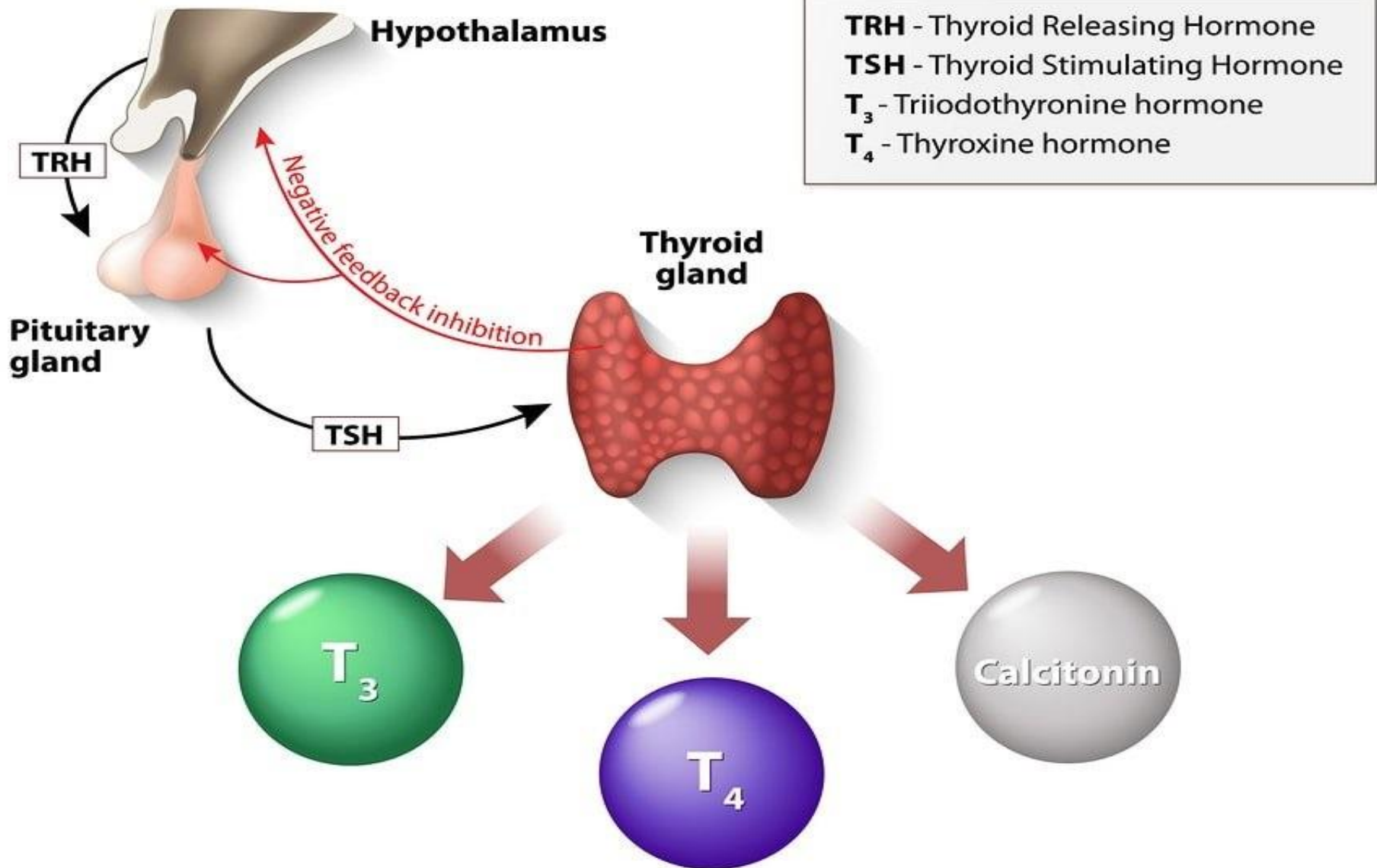
# My presentation consists of 3 parts:

- The first part is the anatomy of the thyroid;
- The second part is hormones of the thyroid;
- The third part is the most common diseases of the thyroid gland.

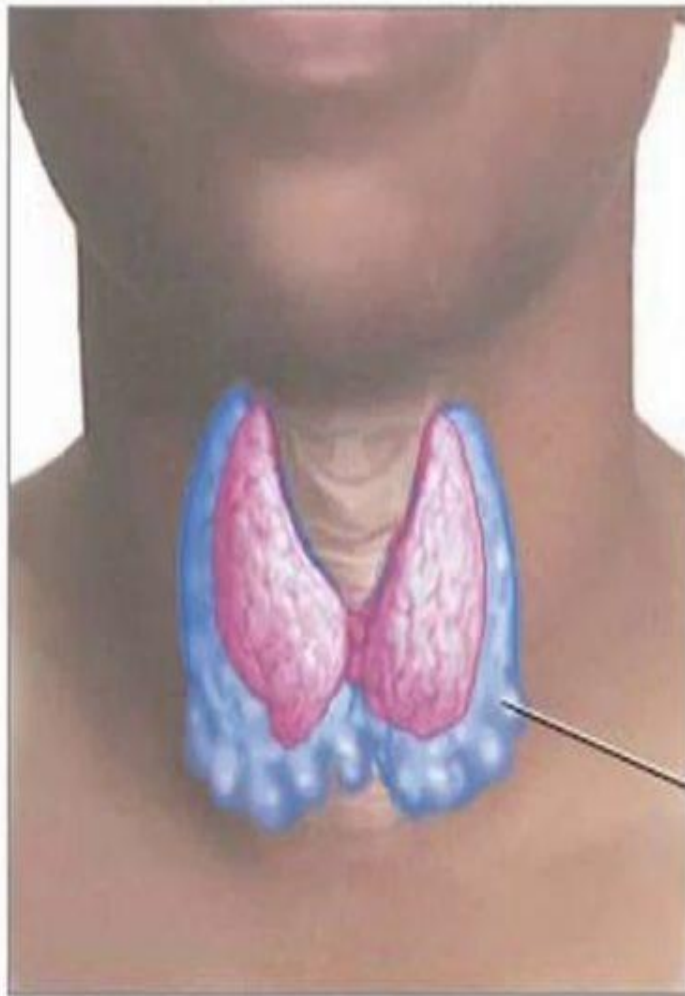




# Thyroid gland and Thyroid Hormones



## Hashimoto's disease



Enlarged, inflamed  
hypofunctioning  
thyroid (goiter)

# Hypothyroidism

## Symptoms:

Extreme Tiredness/Lethargy/  
Lack of Stamina/Motivation  
Memory Loss/"Brain Fog"  
Depression  
Mood Swings  
Hearing Loss

Weight  
Gain

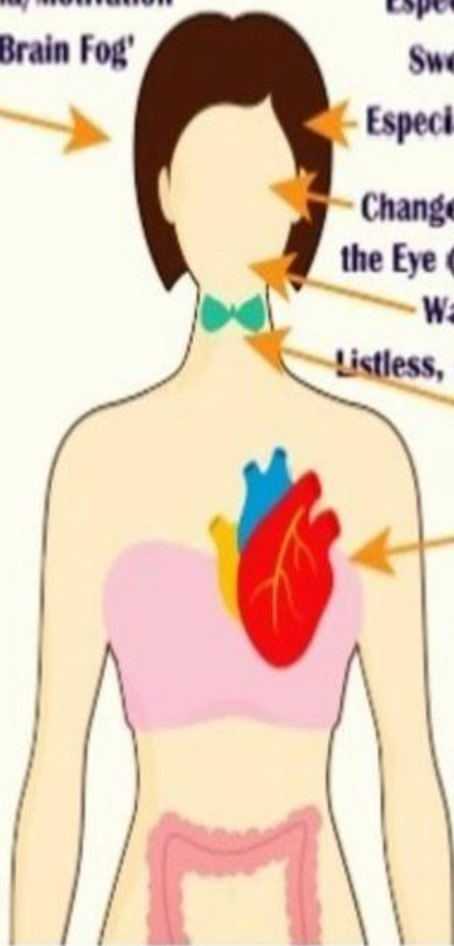
3pm  
crash

Broken  
Sleep

## Signs:

Sparse Eyebrows  
Especially outer ends  
Swelling of the Face  
Especially around Eyes  
(Oedema)  
Changes at the back of  
the Eye (at Fundus Oculi)  
Wasting of Tongue  
Listless, dull to look Eyes  
Hoarseness

Rapid Heart  
Rate with  
weak force  
of contraction  
Slow Thinking  
Slow Pulse  
Rate



# Hyperthyroidism

## Symptoms:

Protusion of one or both  
eyeballs (exophthalmos)  
Breathlessness  
Nervousness  
Difficulty  
Sleeping/  
Insomnia

Fatigue

Itching

## Signs:

Protruding Eyes  
(exophthalmos)

Hair Loss

Staring Gaze

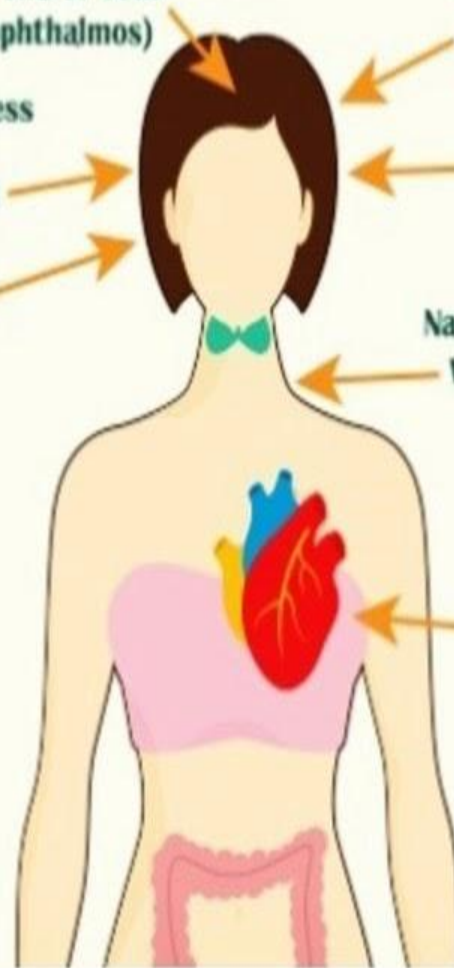
Nausea & Vomiting

Warm Moist Skin

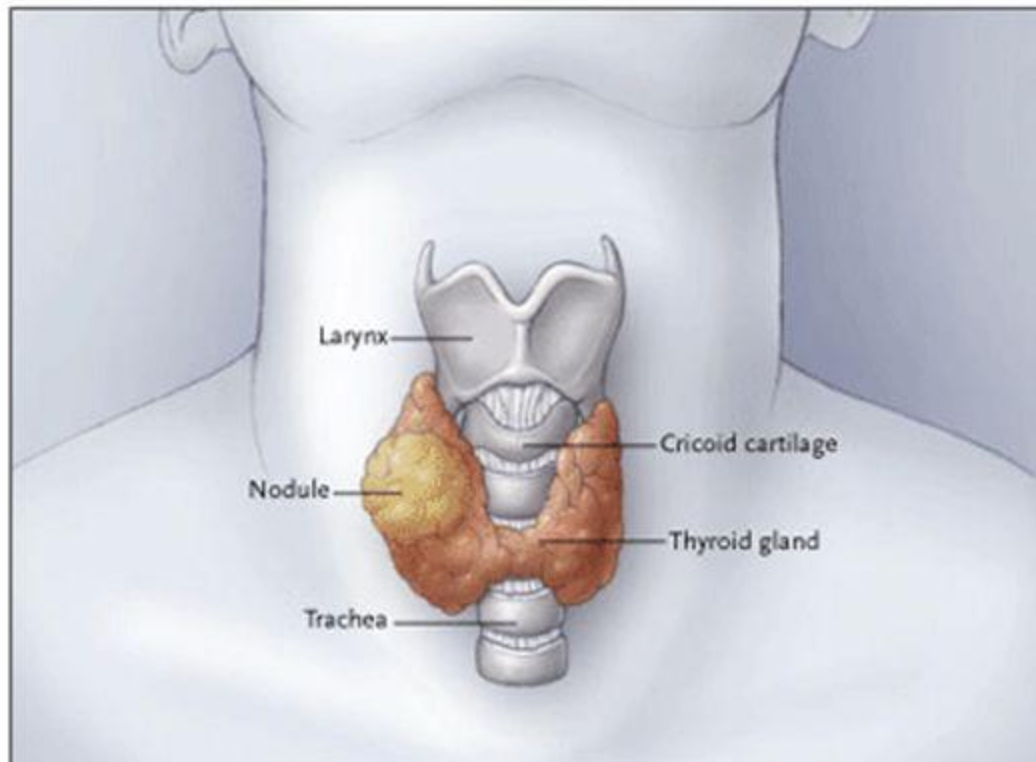
Goitre

Fast  
Heart  
Rate

Trembling  
Hands



# Solitary thyroid nodules



## Benign Nodules (95%)

Hyperplastic nodules (85%)  
Adenomas (15%)  
Cysts (<1%)

## Carcinomas (5%)

Papillary (81%)  
Follicular and Hürthle-cell (14%)  
Medullary (3%)  
Anaplastic (2%)



# Thyroid Cancer



Thyroid cancer



Stage I



Stage II







Thanks for your attention

The background features a blue gradient with a grid of white plus signs. A large, bright white plus sign is centered in the lower half of the image, surrounded by smaller, dimmer plus signs and a faint grid pattern.