

A top-down view of a summer-themed composition. In the center is a two-colored popsicle with a green top half and an orange bottom half, mounted on a wooden stick with a pink and white braided cord at the bottom. The background is a solid peach color, scattered with numerous small, irregular pieces of white, yellow, pink, and blue paper confetti. The word "SUMMER" is written in a large, white, sans-serif font across the middle of the image, partially overlapping the popsicle.

SUMMER



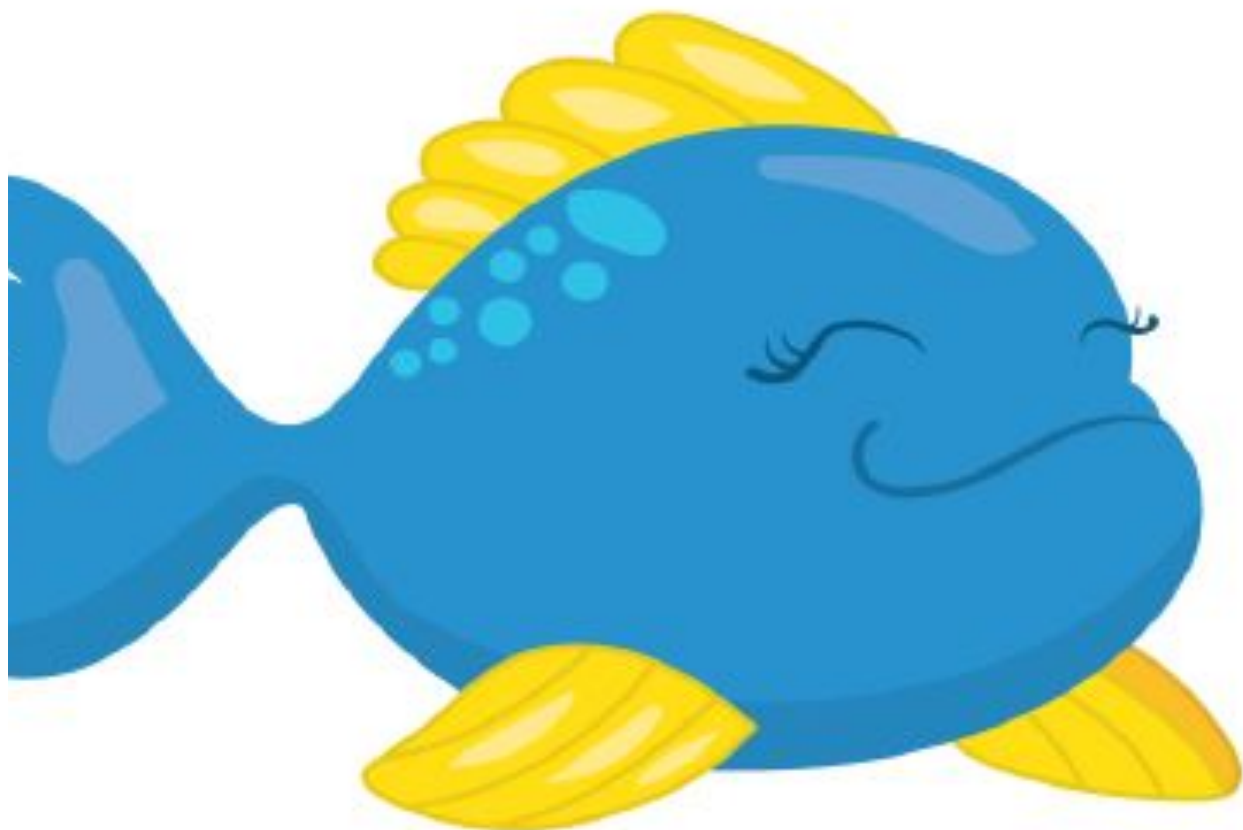
SUN



BALL



CASTLE



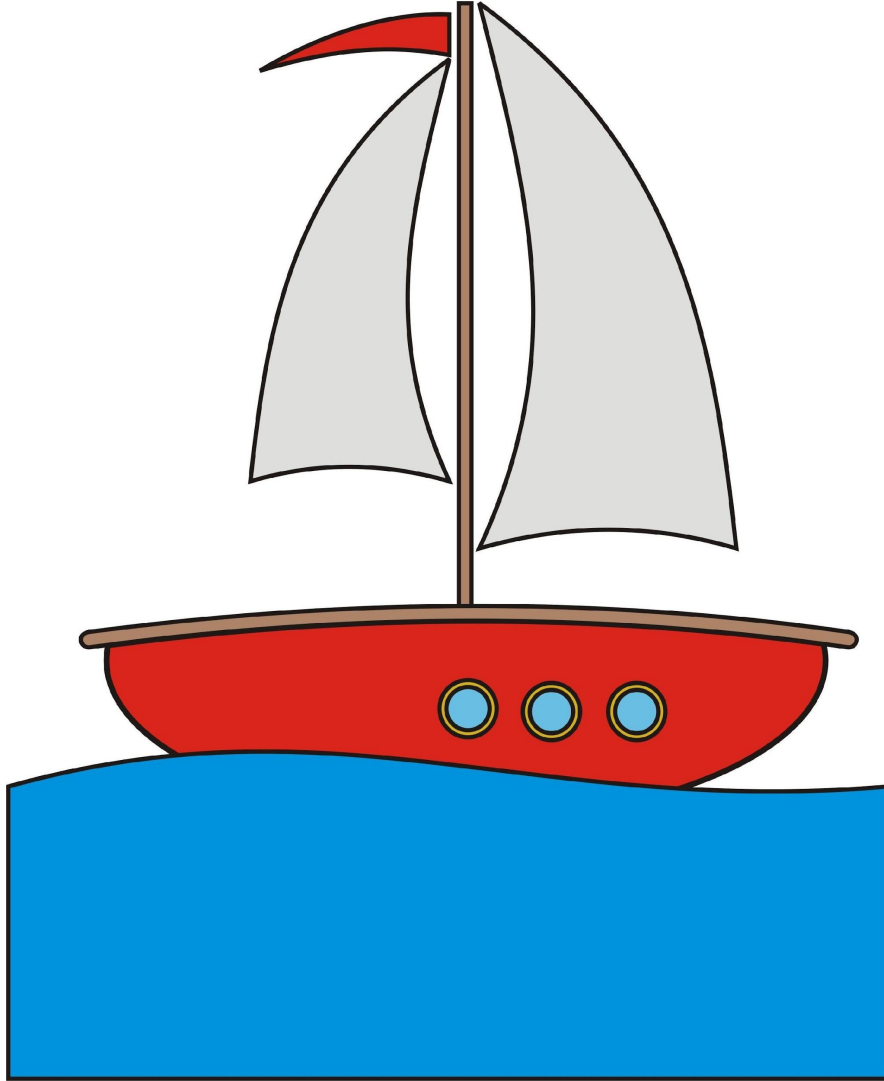
FISH



SHELL



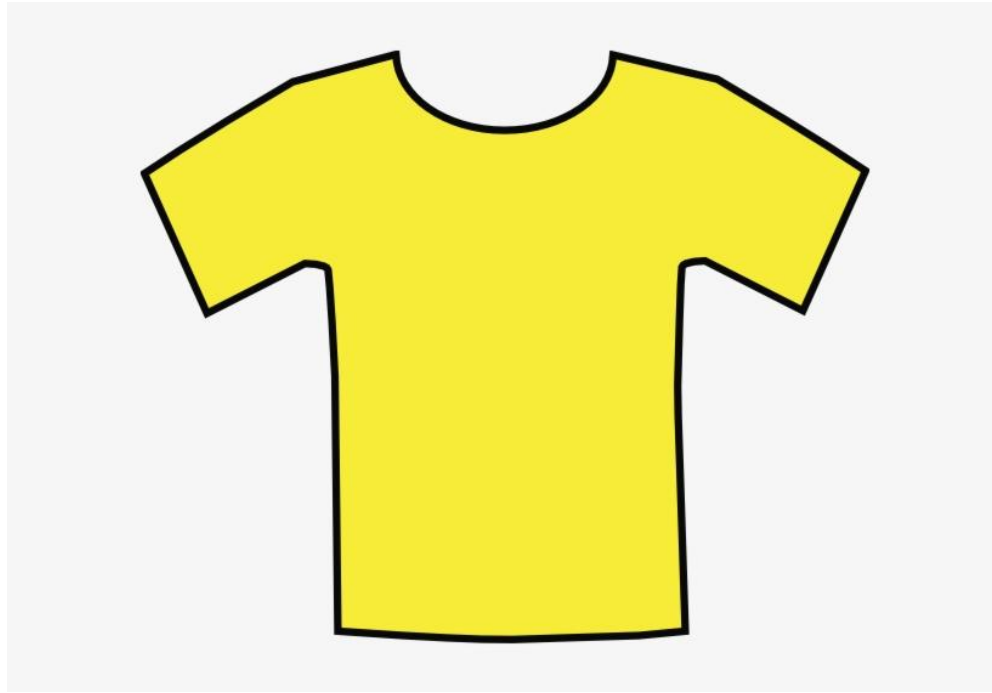
UMBRELLA



BOAT



WHAT DO WE WEAR IN
SUMMER?



T-SHIRT



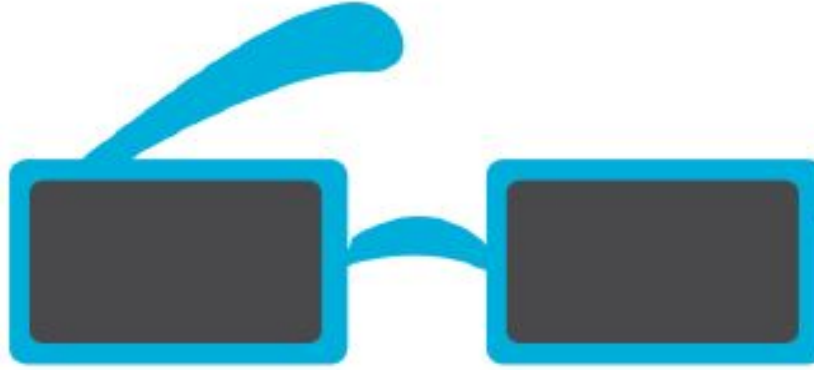
DRESS



SHORTS



SWIMSUIT



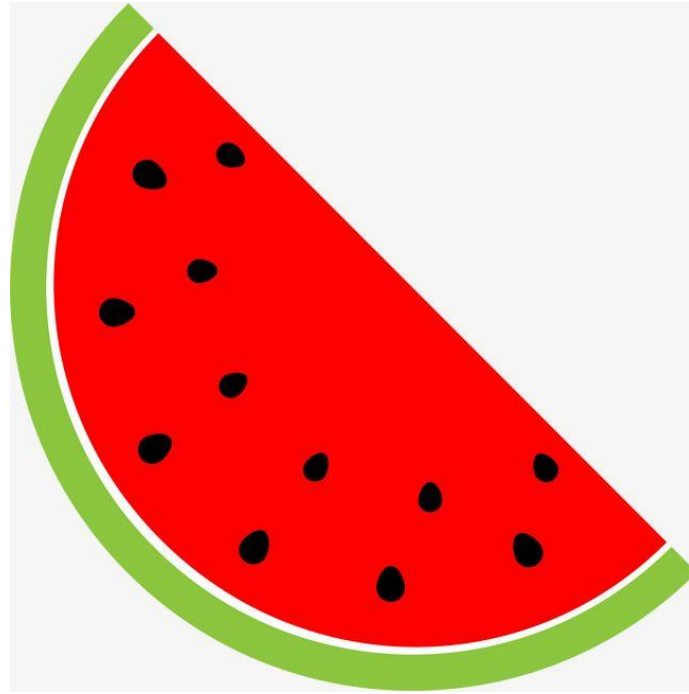
SUNGLASSES



FLIP FLOPS



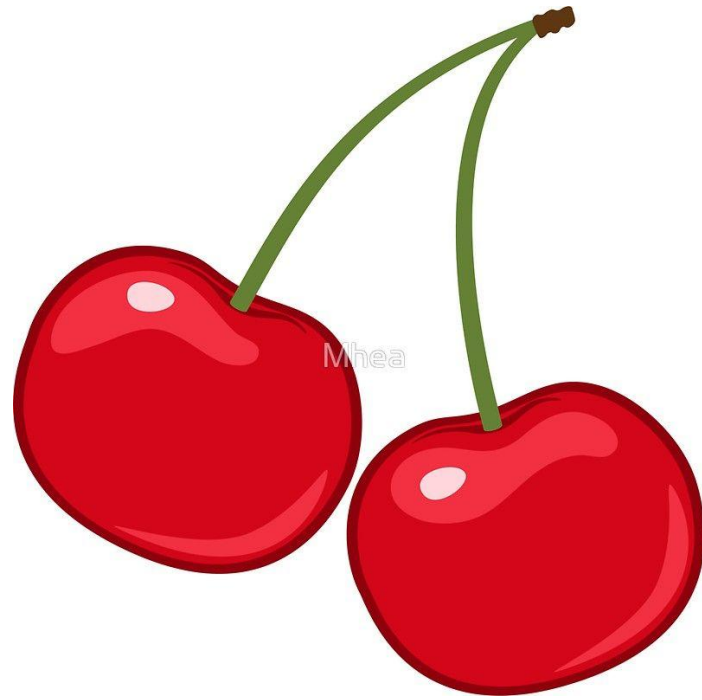
WHAT DO WE EAT IN
SUMMER?



WATERMELON



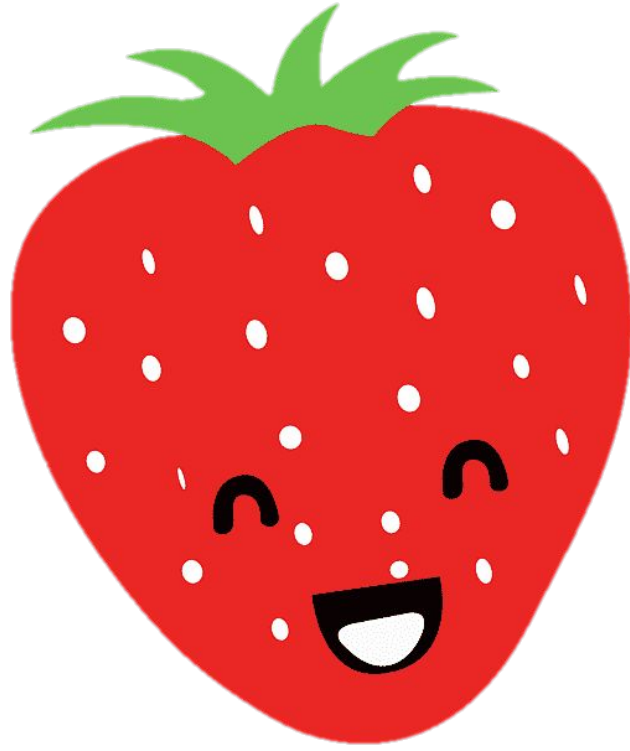
ICE CREAM



CHERRIES



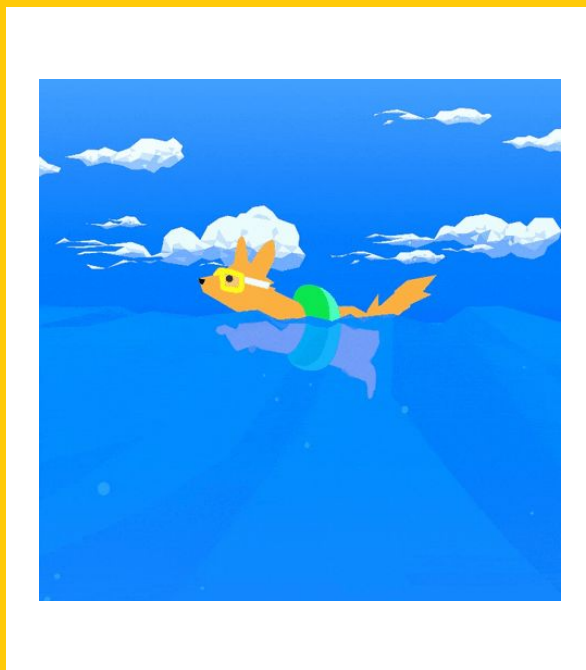
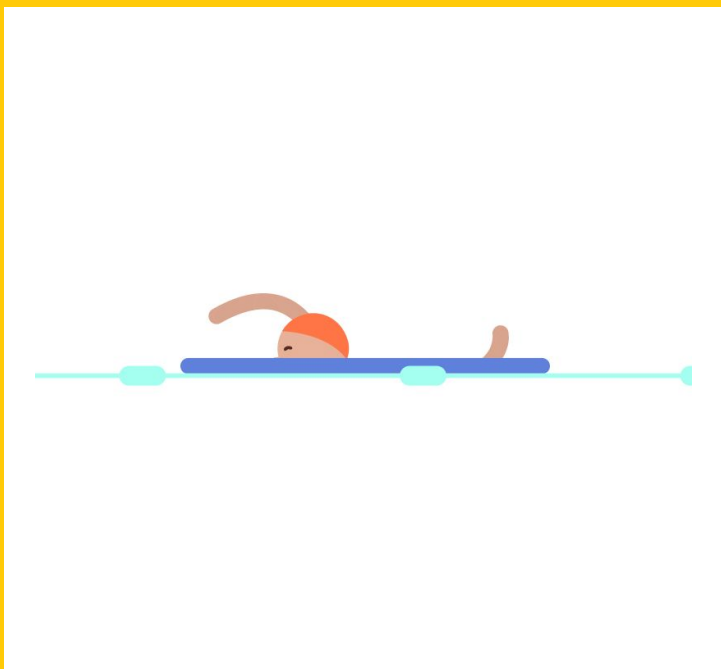
LEMONADE



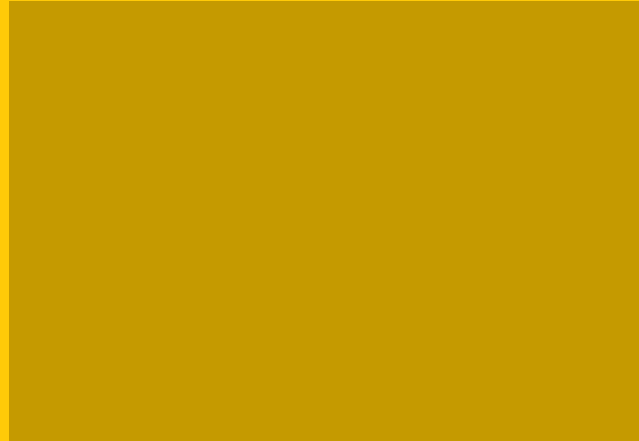
STRAWBERRY



WHAT CAN WE DO IN
SUMMER?



WE CAN SWIM



WE CAN
SURF



**WE CAN
PLAY ON
THE BEACH**

WE ♥ SUMMER

