

Peterhof

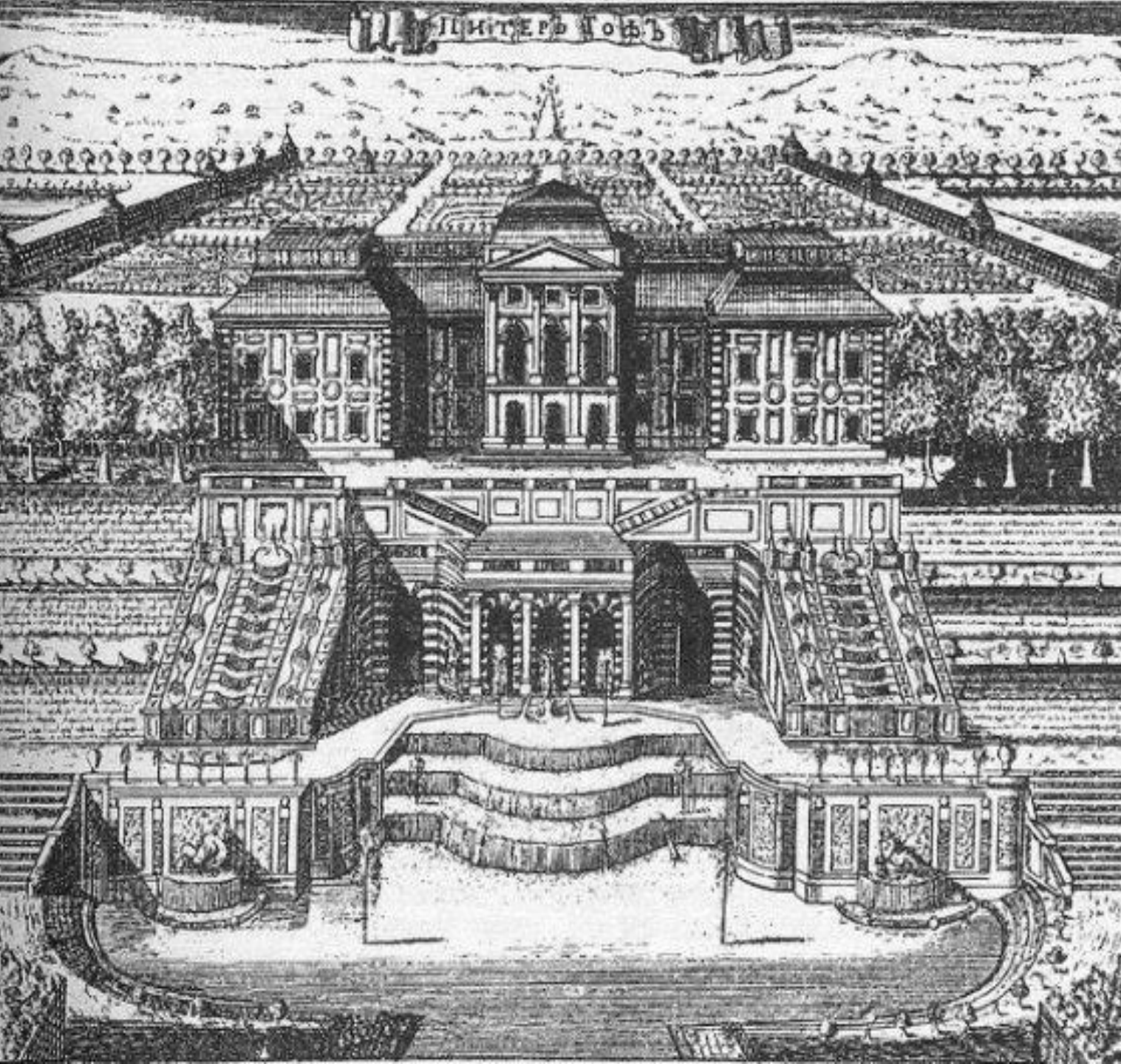




1. *Bombus*
2. *Bombus*
3. *Bombus*
4. *Bombus*
5. *Bombus*
6. *Bombus*
7. *Bombus*
8. *Bombus*
9. *Bombus*
10. *Bombus*
11. *Bombus*
12. *Bombus*
13. *Bombus*
14. *Bombus*
15. *Bombus*
16. *Bombus*
17. *Bombus*
18. *Bombus*
19. *Bombus*
20. *Bombus*
21. *Bombus*
22. *Bombus*
23. *Bombus*
24. *Bombus*
25. *Bombus*
26. *Bombus*
27. *Bombus*
28. *Bombus*
29. *Bombus*
30. *Bombus*
31. *Bombus*
32. *Bombus*
33. *Bombus*
34. *Bombus*
35. *Bombus*
36. *Bombus*
37. *Bombus*
38. *Bombus*
39. *Bombus*
40. *Bombus*
41. *Bombus*
42. *Bombus*
43. *Bombus*
44. *Bombus*
45. *Bombus*
46. *Bombus*
47. *Bombus*
48. *Bombus*
49. *Bombus*
50. *Bombus*
51. *Bombus*
52. *Bombus*
53. *Bombus*
54. *Bombus*
55. *Bombus*
56. *Bombus*
57. *Bombus*
58. *Bombus*
59. *Bombus*
60. *Bombus*
61. *Bombus*
62. *Bombus*
63. *Bombus*
64. *Bombus*
65. *Bombus*
66. *Bombus*
67. *Bombus*
68. *Bombus*
69. *Bombus*
70. *Bombus*
71. *Bombus*
72. *Bombus*
73. *Bombus*
74. *Bombus*
75. *Bombus*
76. *Bombus*
77. *Bombus*
78. *Bombus*
79. *Bombus*
80. *Bombus*
81. *Bombus*
82. *Bombus*
83. *Bombus*
84. *Bombus*
85. *Bombus*
86. *Bombus*
87. *Bombus*
88. *Bombus*
89. *Bombus*
90. *Bombus*
91. *Bombus*
92. *Bombus*
93. *Bombus*
94. *Bombus*
95. *Bombus*
96. *Bombus*
97. *Bombus*
98. *Bombus*
99. *Bombus*
100. *Bombus*

<i>D. haemorrhoidalis</i> Friesen 1897					
σ^7	10	20	30	40	50
10	1.2	1.0	1.2	1.0	1.0



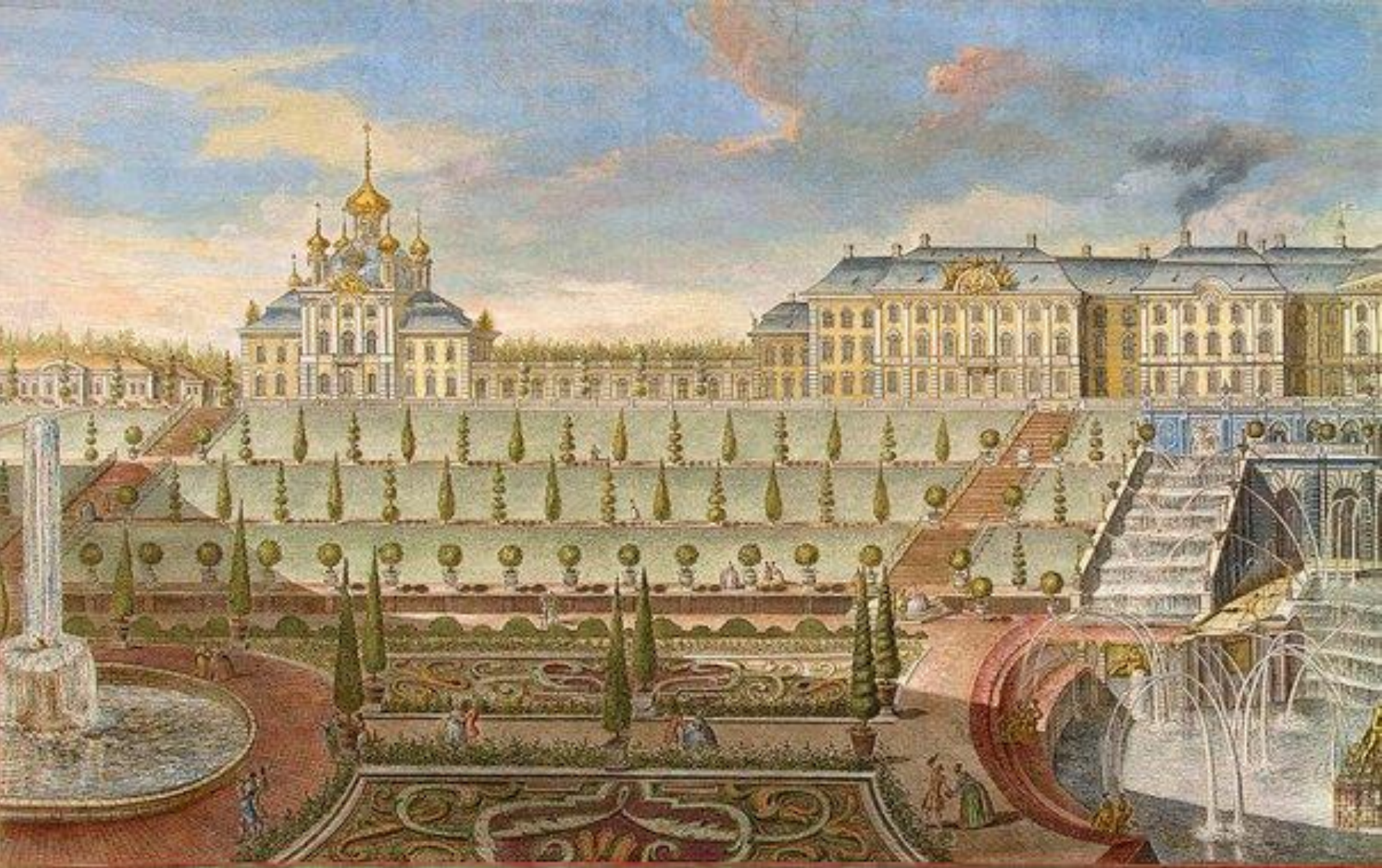


Peterhof,
engraving of
A.I.Rostovtsev
1717.

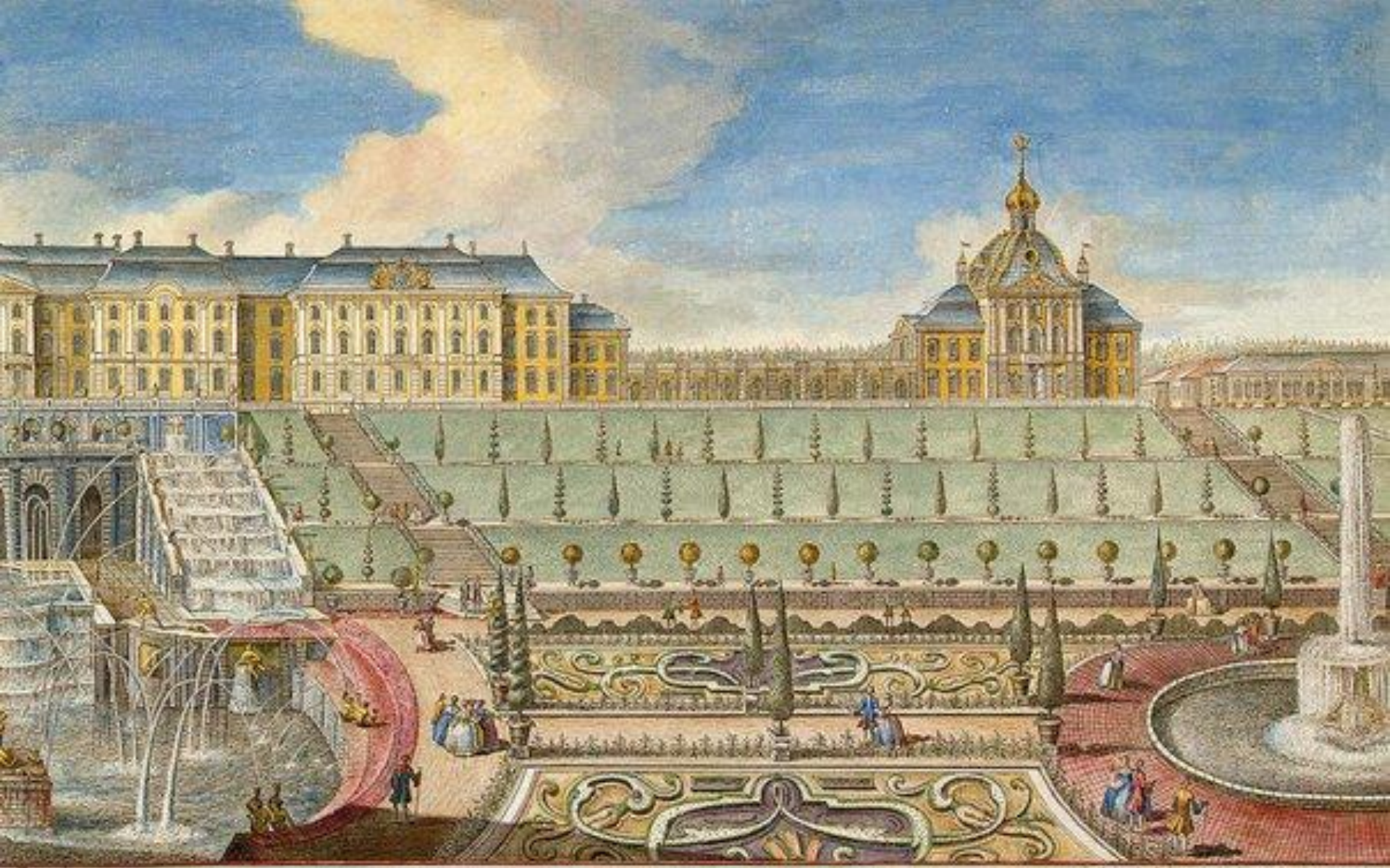
The palace of
Peter I. arch. J.-B.
Leblon.

8th stamp of
Zubov's
panorama of
1716.

The initial
appearance of the
palace before the
reorganization of
Zh.B.-A. Leblond
in 1717.



View of the Grand Palace in Peterhof from the Gulf of Finland. The left part. Painted engraving from the drawing of M.I. Makhaeva, 1761
Artemiev, Prokofy Artemyevich; Chelnakov, Nikita Fedorovich



View of the Grand Palace in Peterhof from the Gulf of Finland. Right side, 1761
Artemiev, Prokofy Artemyevich; Chelnakov, Nikita Fedorovich

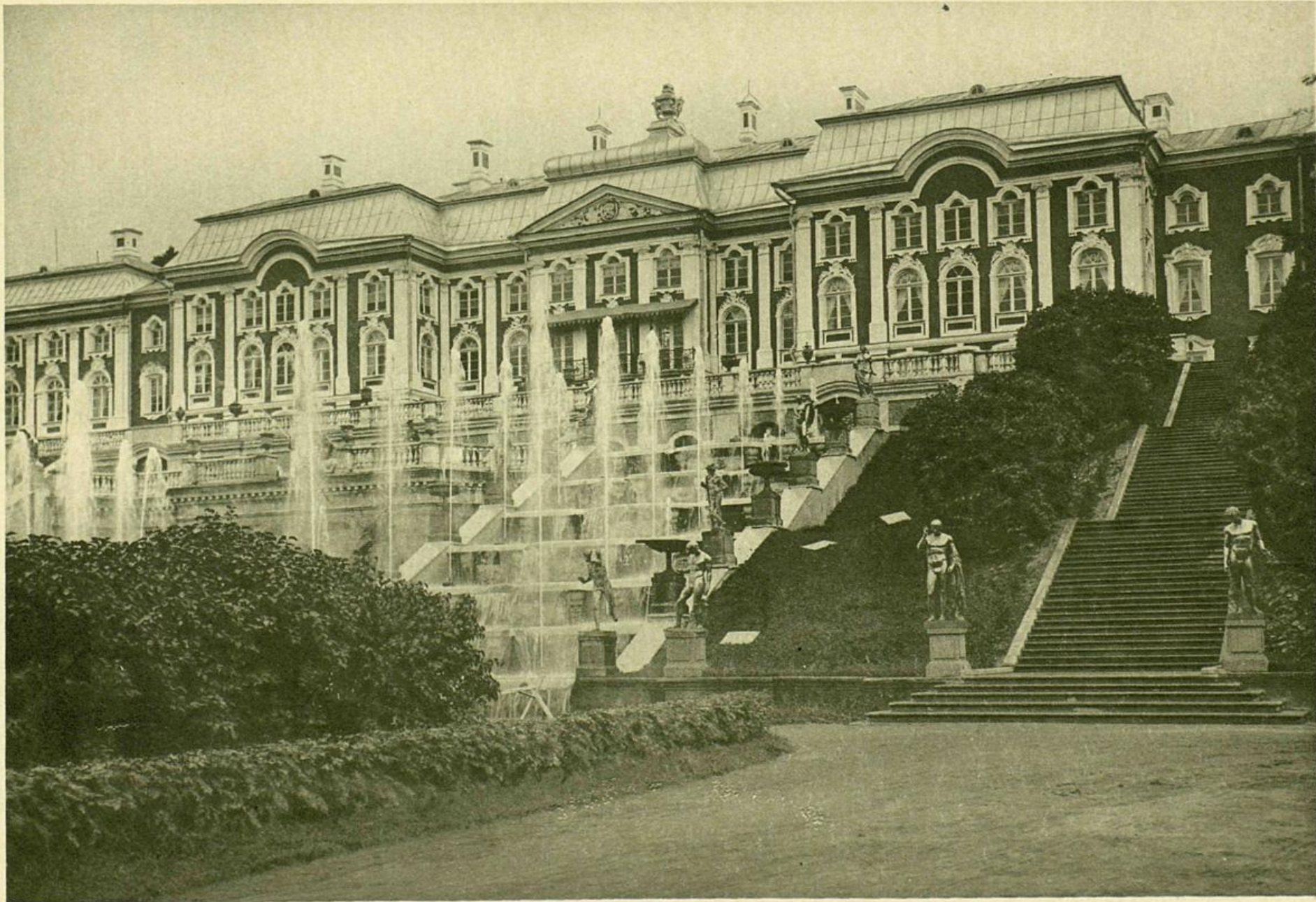


Фото-тинто-гравюра Т-ва „Образование“

Peterhof in the end of the Great Patriotic War





Architecture and sights





The State Museum-Reserve "Peterhof"

The Lower Park from the Great Peterhof Palace



Frauley



Neptune Fountain on the background
The Great Peterhof Palace



Sculptures in the Upper Garden



The Marley Palace

The Sea Canal with the Alley of Fountains



The Gothic chapel



Holguin Pavilion



Thank you for attention!!!

