



IMPERATIVES

The *imperative* is used to give commands and orders.

EXAMPLES:

- *Open the door.*
- *Clean your shoes.*
- *Sit down.*

Or is used to make suggestions using *Let's* + *main verb*.

EXAMPLES:

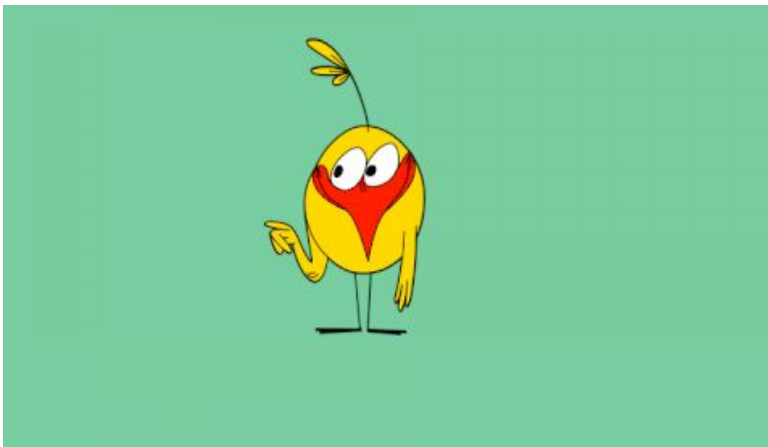
- *Let's run.*
- *Let's go to the beach.*
- *Let's take a picture.*



COMMANDS AND ORDERS.



Look at the bird.



Point to everywhere.



Pick up the trash.



Clean those windows.



Put on your jacket.



Put the ball in the teddy bear bag.



Take the clothes to the house.



Listen to the teacher.

MAKING SUGGESTIONS.



Let's dance.



Let's eat.



Let's close the window.



Let's play soccer.

GOODBYE

